



**TRLIA**  
**26<sup>th</sup> QUARTERLY WORK PLAN**  
**FOR**  
**UPPER YUBA RIVER LEVEE**  
**IMPROVEMENT PROJECT**

1. 26<sup>th</sup> Quarterly Work plan for quarter: January 1 to March 31, 2016

2. Date of Report: January 4, 2016 (Page 12 edited on 4-12-2016)

3. 26<sup>th</sup> Quarter Work Plan:

<b>Quarterly Work Plan Summary</b>				
<b>Description</b>	<b>State Share</b>	<b>Local Share</b>	<b>Total</b>	<b>Local Credit Applied</b>
Elements 7 & 9 - ROW Acquisition	\$56,000	\$24,000	\$80,000	\$0
Elements 1 through 6, 8, 9 & 10	\$489,964	\$209,985	\$699,948	\$0
<b>Total</b>	<b>\$545,964</b>	<b>\$233,985</b>	<b>\$779,948</b>	<b>\$0</b>

<b>Quarterly Summary for Real Estate Activity</b>	
State Share Elements 7 & 9	\$56,000
Local Credit Applied Elements 1	\$0
<b>Estimated Total Quarterly State Real Estate Funding</b>	<b>\$56,000</b>

<b>Quarterly State Share Advance Summary for Non-Real Estate Activity</b>	
75% of State Share Elements 1 through 6 & 8 through 10	\$367,473
plus/minus State Share true-up for Prior Quarters [1]	-\$474,967
<b>Total Funding for State Share at Start of 26<sup>th</sup> Quarter</b> <i>(negative represents surplus funding from prior quarters)</i>	<b>-\$107,494</b>

[1] Estimated, see reconciliation of Prior State Funding.

<b>Quarterly Local Credit Summary for Non-Real Estate Activity</b>	
Local Credit Elements 1 through 6 & 8 through 10	\$0
plus/minus Local Credit true-up for Prior Quarters [1]	\$0
<b>Total Advance for Local Credit at Start of 26<sup>th</sup> Quarter</b>	<b>\$0</b>

[1] See Reconciliation of Prior State Funding.

**Reconciliation of State Advance Funding for Construction**  
**As of 25<sup>th</sup> Quarter - State Share: Based on 24<sup>th</sup> QPR plus 25<sup>th</sup> QWP**  
**(as adjusted for schedule and other factors)**

Total Non-Real Estate Non-Creditable Expenses (Elements 1 – 6, 8 – 10) through 24th Quarter [1]	\$24,913,296
25 <sup>th</sup> Quarter Total Non-Real Estate Forecasted Expenses [2]	\$672,221
Total Expenses Forecasted through 25 <sup>th</sup> Quarter	<b>\$25,585,517</b>
State Share True-Up Calculations	
Total State Share of Above Expenses	\$17,776,500
Total State Funding Due (net of 10% Retention on Prior Expenses)	<b>\$15,998,850</b>
Funding To Date	
1st Quarter Advance	\$451,818
1st Quarter True-Up	\$70,578
2nd Quarter Advance	\$801,157
3rd Quarter Advance	\$1,981,246
2nd Quarter True-Up	\$53,088
4th Quarter Advance	\$3,468,242
3rd Quarter True-Up	\$160,754
4th Quarter Advance	\$1,981,246
9th Quarter True-Up	\$429,363
10th Quarter True-Up	\$719,915
11th Quarter Advance	\$476,664
11th Quarter True-Up	\$582,451
12th Quarter True-Up	\$277,671
13th Quarter True-Up	\$1,075,072
14th Quarter True-Up	\$692,148
15th Quarter Advance	\$267,234
2nd Quarter revised True-Up	\$92,631
16th Quarter True-Up	\$37,164
17th Quarter True-Up	\$153,917
18th Quarter Advance	\$87,124
18th Quarter True-Up	\$44,783
20th Quarter Advance	\$197,925
19th, 20th, 21st & WPIC True-Ups	\$706,809
22nd Quarter Advance	\$184,081
22nd Quarter True-Up	\$209,025
24 <sup>th</sup> Quarter Advance	\$1,271,711
Total State Share Funding Received	<b>\$16,473,817</b>
<b>Estimated State Share Construction Funding Due as of 25<sup>th</sup> Quarter</b>	<b>-\$474,967</b>

**As of 25<sup>th</sup> Quarter - Local Share: Based on 24<sup>th</sup> QPR plus 25<sup>th</sup> QWP  
(as adjusted for schedule and other factors)**

Local Share True-Up Calculations	
Local Share of Above Forecasted Expenses	\$7,821,075
<b>Total Local Funding Credit Due</b>	<b>\$6,619,616</b>
Funding To Date	
Local Credit Advanced (from 1st Quarter)	\$410,772
Local Credit Advanced (from 2nd Quarter)	\$343,623
Local Credit Advanced (from 3rd Quarter)	\$1,533,856
Local Credit True-Up (from 2nd Quarter)	\$152,747
Local Credit Advanced (from 4th Quarter)	\$2,622,994
Local Credit True-Up (from 13th Quarter)	\$511,939
Local Credit True-Up (from 14th Quarter)	\$329,594
Local Credit True-Up (from 16th Quarter)	\$88,880
Local Credit True-Up (from 17th Quarter)	\$73,294
Local Credit Advanced (from 18th Quarter)	\$49,785
Local Credit True-Up (from 18th Quarter)	\$13,028
Local Credit Advanced (from 20th Quarter)	\$489,104
<b>Total Credit Funding Received</b>	<b>\$6,619,616</b>
<b>Local Credit Due as of 25<sup>th</sup> Quarter [1]</b>	<b>\$0</b>

[1] 24<sup>th</sup> Quarter QPR Costs Subject to review by DWR, 25<sup>th</sup> QWP adjusted for actual expenses. Local Credit is limited to available credit. Note: No local credit remains.

#### 4. Project Element Information:

- *During the 25<sup>th</sup> quarter TRLIA requested DWR to extend the UYLIP funding agreement to December 31, 2017 to allow the land transfer and WPIC construction work to be completed.*
- Effective the 23<sup>rd</sup> quarter the narrative text for completed Elements and Features has been deleted from the report. The deleted items will continue to be shown in the schedule and financial update portions of the report.
- The UYLIP 3<sup>rd</sup> Funding Agreement Amendment was approved on September 24<sup>th</sup> Quarter. The 3<sup>rd</sup> Amendment added Project Elements 9 and 10, and extended the agreement date to June 30, 2016.
- On November 21, 2013 the UYLIP funding agreement was amended for the 2<sup>nd</sup> time to extend the agreement date to September 30, 2015. The extension was due to the time needed to close real estate.
- During the 16<sup>th</sup> quarter the Department of Finance began a financial audit of the UYLIP EIP funding agreement. The Audit was completed in the 20<sup>th</sup> quarter. No items were found by the audit team. The audit results are posted on the TRLIA.
- At the request of DWR, restructuring of Project Elements and Features occurred during the preparation of the 4<sup>th</sup> Quarterly Work Plan (QWP) submitted on May 28, 2010. The

following changes were made and a revised Overall Work Plan Budget was submitted with the 4<sup>th</sup> QWP that reflected the following changes.

- A new Element 7: Right of Way Capital was added. This was previously Element 3: Feature 3.3. The purpose of this change was to separate Right of Way acquisition costs into a separate and distinct Element.
- Element 2 Features 2.3, 2.4 and 2.5 (Preliminary Design, Preliminary Permitting and Preliminary Right of Way Support) have been moved to Element 3. The purpose of this change was to remove all features that were able to be funded at the full 70% cost share from Element 2 so that as a whole, all costs in Element 2 are funded at 50% and all costs in Element 3 are funded at 70% by the State.

All subsequent discussion in this QWP is reflective of these modifications.

- **Engineering and construction matters:**

- **Project Element 1A: Levee Landside Improvement – Station 5+80 to 9+00**
  - Feature 3 Right of Way Support: TRLIA will continue work on this feature during the 26<sup>th</sup> Quarter. See Element 7 below for property acquisition information.
  - Feature 6: O&M Manual: There are no longer separate O&M Manuals for each Element. At the request of the CVFPB and USACE, one combined O&M Manual has been prepared for the entire RD 784 levee system and is under review by the USACE. See Element 3, Feature 6 for an update on the USACE review of this combined O&M Manual.
- **Element 3: Levee Improvements (Slurry Wall and Waterside Slope Erosion Protection) Support Work**
  - Feature 2.5 Right of Way Support (Project Elements 1 to 8): TRLIA real estate and legal consultants will be active during the 26<sup>th</sup> quarter finalizing right of way needs for the project. See Element 7 below for property acquisition information.
  - Feature 3 Right of Way: This feature was moved to Project Element 7 as requested by DWR. See May 28, 2010 4<sup>th</sup> Quarterly Work Plan.
  - Feature 4 Construction Management: Limited activity is anticipated to occur during the 26<sup>th</sup> quarter to address items required by settlement of eminent domain settlements (e.g. Dan Luis settlement), and to oversee PG&E power line relocation work that is being done to support a TRLIA eminent domain settlement. The PG&E work is being done under CVFPB encroachment permit 18695. The Dan Luis acquisition was filed in the 24<sup>th</sup> Quarter. Easements to PG&E remain to be issued to PG&E. After easements are assigned to PG&E,

TRLIA will discuss the final relocation of the power line with PG&E and get the work scheduled.

- Feature 5 Environmental Mitigation: The additional elderberry seedling plantings were planted in the 14<sup>th</sup> quarter. Maintenance to ensure their establishment will continue in the 26<sup>th</sup> quarter. Maintenance for the additional seedlings will continue until April 2016. Monitoring will continue until 2018.
- Feature 6 O&M Manual Addendum: An existing O&M Manual was revised to add the completed work and submitted to DWR and CVFPB for their review on February 14, 2013. CVFPB commented that USACE Section 408 requirement for the UYLIP required that all O&M Addendums prepared by TRLIA for the recent RD 784 levee system improvements be combined into one comprehensive addendum for the RD 784 levee system. TRLIA revised and combined all O&M Addendums into a Comprehensive Addendum that was submitted to CVFPB and DWR in the 18<sup>th</sup> quarter. USACE has completed an internal review of the combined Addendum. USACE has concerns with elements that they do not consider to be part of the Federal Project being in a federal version of a combined manual. USACE is preparing their draft version of what the combined addendum should be and will submit that to CVFPB as the manual to follow for maintenance of the Federal Project. As of October 31, 2015 USACE has not provided their version of the manual to the CVFPB. The USACE Project Manager is addressing internal review comments on the combined manual. The draft combined O&M Addendum submitted to USACE included O&M for areas for which TRLIA has committed to provide O&M. These portions of the draft Manual will need to be captured, presented in a separate supplement to the federal version of the combined O&M Manual, and followed in order to meet past commitments. RD 784 continues maintenance for the levee system following the directions contained in the Combined RD 784 O&M Manual. TRLIA will continue to coordinate with USACE during the 26<sup>th</sup> Quarter to obtain a federal version of the combined O&M Manual.
- **Element 6:** Project Management, legal support, community relations support, land management support, and overhead
  - Activity is anticipated in all Features during the 26<sup>th</sup> quarter. TRLIA has included estimated annual expenses for insurance premiums effective this quarter.
- **Element 7:** Right of Way Capital
  - Feature 7-3.3 Right of Way (Project Elements 1 to 8):
    - **Land Transfer:** TRLIA will continue to work with state during the 26<sup>th</sup> quarter on land transfer of the UYLIP property. Completion of the land transfer process by June 30, 2016 (current UYLIP funding agreement date is problematic) and is anticipated to extend into 2017 and be completed by the end of 2017. On October 27, 2015 (25<sup>th</sup> quarter) TRLIA requested DWR

extend the UYLIP funding agreement to December 31, 2017 to allow the land transfer process and other work identified in this report to be completed.

**This issue is listed in the Issue/Concerns portion of this report**

- In the 26<sup>th</sup> quarter TRLIA will continue to work with DWR on finalizing the updated and amended Real Estate Plan that submitted on August 14, 2015. The WPIC Real Estate Plan was included in this amendment in Section 2 of the plan.
- Western Aggregate: During the 26<sup>th</sup> quarter TRLIA will continue to negotiate with Western Aggregates to acquire fee title to portions of the levee and O&M corridors owned by Western Aggregates. TRLIA offered to grant back railroad easements over the land that TRLIA seeks to acquire from Western Aggregates in fee, and to leave already existing railroad easements owned by Western Aggregates in place, because Western Aggregates has stated that it hopes to use its fee and easement interests along the levee to eventually build a railroad spur for the transportation of aggregate from the Goldfields. DWR has agreed to allow the existing easements owned by Western Aggregates to remain in place, and also agreed to allow TRLIA to grant new railroad easements to Western Aggregates over property that TRLIA acquires from Western Aggregates in fee.

In exchange for transferring fee title to the properties that TRLIA seeks to acquire in fee, Western Aggregate has requested TRLIA grant Western Aggregates a new floating railway easement on not only the properties that TRLIA seeks to acquire from Western Aggregates, but also along other sections of the Upper Yuba Project levee and O&M corridors where Western Aggregates does not currently have any ownership interest. In the 16<sup>th</sup> quarter, TRLIA met with DWR officials about this request and DWR has indicated that the CVFPB is the lead agency on this item. TRLIA has brought on a mediator to help settle this item. During the 26<sup>th</sup> quarter TRLIA will continue to negotiate with Western Aggregates on this item. TRLIA anticipates seeking further input regarding these negotiations from the CVFPB and DWR in the 26th Quarter.

**This issue is listed in the Issue/Concerns portion of this report**

- **Final Accounting Packages (FAPs) and Cadastral Requirements:** Tables 1 to 6 provide the status of Real Estate Property actions and Final Accounting Packages (FAPs). TRLIA will continue submitting Final Accounting Packages (FAP's) during the 24<sup>th</sup> quarter.

**Table 1 – List of FAPS and Cadastral Approval Status**

Number	CVFPB #	Parcels	Owner	DWR RE Approval Status	DWR Cadastral Approval Status
1	14050	020-080-009	Western Aggregates, Inc.		
2	14051	021-041-006	Clara Willis, Et al	approved	
3	14052	021-041-007	Bernard J. Perez	approved	
4	14053	021-041-010	Lothar S. Klug, Et Al	approved	
5	14054	021-041-009	ROSA MARTHA VALDEZ	approved	
6	14055	021-041-012, 021-042-014	Steve Gilbert, Et Al	approved	
7	14056	021-042-027	Humam El Sharif	approved	
8	14057	021-0500-001	Orest Wesely, Et Al	pending	
9	14058	018-220-048, -049	COF Quail Hollow Land 35F LLC	approved	
10	14059	018-210-014	Stephanie Morris	approved	
11	14060	018-210-029	Robert G. Wood	approved	
12	14061	018-220-007	Howard R. Miller	approved	
13	14062	018-200-001, 018-220-030	Ajit S. Bains	approved	
14	14063	018-200-005, -007, 018-210-035	Anthony J. Luis, Et Al		
15	14064	018-200-008	Danel J. Luis		
16	14065	018-190-002, 018-200-006	Richard G. Wilbur Trust	approved	
17	14066	018-140-040	Richard G. Wilbur Trust	approved	
18	14067	018-150-015, 018-190-001	Henry P. Smith Et Al		
19	14068	018-190-110	Walbinder S. Sohal Living Trust	approved	
20	14069	018-190-107, 018-190-108	Sohal Family Trust	pending	
21	14070	018-150-035, 018-190-104	Michele R. Baker		
22	14071	018-150-032	Shintaffer Farms, Inc.	approved	
23	14072	018-190-109	Bhajan S. Sohal, Et Al	approved	
24	14073	021-021-001	Dunning Properties, LP		

Number	CVFPB #	Parcels	Owner	DWR RE Approval Status	DWR Cadastral Approval Status
25	14074	Portion of 018-220-056	Wilbur, Richard G.		
26	14075	018-220-056	Western Aggregates, LLC		
27	14079	020-410-001	Allen, Jason G.		
28	14080	Portion of 018-150-032 and -035	Federal Fruit Exchange	approved	
29	14081	018-230-028	Orchard Growers	approved	
30	14085	018-140-041	Naumes, Inc.	approved	
31	14086	018-190-085	Rahul, Surjit S. & Parmjit	approved	
<b>Total</b>				<b>17</b>	<b>0</b>

**Table 2 - Acquisition being negotiated:**

CVFPB	OWNER	STATUS OF ACQUISITION	STATUS OF F.A.P. (target to be submitted to DWR)	SETTLEMENT AMOUNT / TOTAL CLAIMED	STATE SHARE OF SETTLEMENT	INVOICED TO DATE	COMMENTS
14050	Western Aggregates, LLC	Negotiation					TRLIA has offered to grant back railroad easement over properties it seeks to acquire in fee. Western responded that it wants additional railroad easements along other properties TRILIA has acquired. Parties are negotiating.
14063	Anthony J. & Zelma B. Luis	Settlement Reached				\$11,200	Amending FOC for Geodetic Update
14064	Daniel J. Luis	Complete		\$46,477.00	\$32,533.90	\$5,670.00	Amending FOC for geodetic update. Preparing FAP & Relo FAP.
14073	Dunning Properties, LLC	Negotiation					TRLIA has been advised Western Aggregates owns the Dunning Brothers property. Accordingly, this property has the same issues as the other Western Aggregate Properties



CVFPB	OWNER	STATUS OF ACQUISITION	STATUS OF F.A.P. (target to be submitted to DWR)	SETTLEMENT AMOUNT / TOTAL CLAIMED	STATE SHARE OF SETTLEMENT	INVOICED TO DATE	COMMENTS
14074	Richard G. Wilbur	Negotiation					Memo of Updated appraisal received. Revised offer submitted 10/1/14; Mr. Wilbur requested property staking
14075	Western Aggregates, LLC	Negotiation					See comment for CVFPB 14050

**Table 3 - Negotiated Acquisitions** – The following parcels have been acquired. Final Accounting Packages are being prepared.

CVFPB	OWNER	STATUS OF ACQUISITION	STATUS OF F.A.P. (target to be submitted to DWR)	SETTLEMENT AMOUNT / TOTAL CLAIMED	STATE SHARE OF SETTLEMENT	INVOICED TO DATE	COMMENTS
14070	Michele R. Barker	Complete				\$64,750	Attorney to accept payment from escrow. Settlement docs to escrow. Need 1099s signed.
14079	Jason G. Allen	Complete		\$210,000.00	\$147,070.00	Not invoiced yet	Rec'd FOC. Settlement reached 12/18/13. Processing FAP & 12 Relo FAPs.

**Table 4 - Final Accounting Packages at DWR:**

CVFPB	OWNER	STATUS OF ACQUISITION	STATUS OF F.A.P. (target to be submitted to DWR)	SETTLEMENT AMOUNT / TOTAL CLAIMED	STATE SHARE OF SETTLEMENT	INVOICED TO DATE	COMMENTS
14057	Orest and Irene Wesely	Complete	submitted	\$33,000.00	\$23,100.00	\$23,100.00	To DWR 10/11/13
14067	Henry P. Smith	Complete	Submitted	\$149,071.00	104,349.00	\$22,400.00	To DWR 1/26/15
14069	Awtar S. Sohal & Sukhvir K. Sohal, Co-Trustees	Complete	submitted	\$41,500.00	\$29,050.00	\$21,787.50	To DWR 8/2/14

**Table 5 - Final Accounting Packages Approved:**

CVFPB	OWNER	STATUS OF ACQUISITION	STATUS OF F.A.P. (target to be submitted to DWR)	SETTLEMENT AMOUNT / TOTAL CLAIMED	STATE SHARE OF SETTLEMENT	INVOICED TO DATE	COMMENTS
14051	Ronnie C. Willis	Complete	approved	\$29,500.00	\$20,650.00	\$20,650.00	Approved 8/4/15
14052	Bernard J. Perez	Complete	approved	\$10,350.00	\$7,245.00	\$7,245.00	Approved 8/10/15
14053	Lothar S. & Brigitta M. Klug	Complete	approved	\$2,800.00	\$1,960.00	\$1,960.00	Approved 8/10/15
14054	Valdez	Complete	approved	\$5,200.00	\$3,640.00	\$1,820.00	Approved 8/4/15
14055	Steve and Denise Gilbert	Complete	approved	\$15,700.00	\$14,840.00	\$14,840.00	Approved 8/4/15
14055	Steve and Denise Gilbert	Complete	approved	\$5,500.00			Approved 8/4/15
14056	Humam El Sharif	Complete	submitted	\$2,100.00	\$1,470.00	\$1,470.00	Approved 9/11/15
14059	Stephanie Morris	Complete	approved	\$7,900.00	\$5,530.00	\$4,060.00	Approved 8/10/15
14060	Robert Glenn Wood	Complete	approved	\$3,200.00	\$2,240.00	\$2,240.00	Approved 8/10/15
14061	Howard R Miller	Complete	approved	\$1,400.00	\$980.00	\$980.00	Approved 8/10/15
14058	COF Quail Hollow Land 148T	Complete	submitted	\$34,750.00	\$24,325.00	\$24,325.00	Approved 9/11/15
14062	Ajit S. Bains & Maria Del Carmen	Complete	Submitted	\$48,700.00	\$34,090.00	\$15,050	Approved 9/11/15
14065	Richard G. Wilbur Trust	Complete	Submitted	\$48,270.00	\$33,789.00	\$16,100	Approved 9/11/15
14066	Richard G. Wilbur Trust	Complete	Submitted				Approved 9/11/15
14068	Walbinder S. Sohal Living Trust,	Complete	Submitted	\$598,500.00	\$418,950.00	\$418,950.00	Approved 9/11/15
14071	Shintaffer Farms, Inc.	Complete	approved	\$5,500.00	\$3,850.00	\$437.00	Approved 8/10/15
14072	Bhajan S. & Rajwant K. Sohal	Complete	submitted	\$598,500.00	\$418,950.00	\$418,950.00	Approved 9/11/15
14080	Federal Fruit Distributors	Complete	submitted	\$800.00	\$560.00	\$392.00	Approved 9/11/15
14081	Orchard Growers	Complete	approved	\$500.00	\$350.00		Approved 8/10/15
14085	Naumes, Inc.	Complete	approved	\$3,000.00	\$2,100.00	\$175.00	Approved 8/10/15
14086	Rahul, Surjit S. & Parmjit	Complete	approved	\$500.00	\$350.00	\$175.00	Approved 8/10/15

**Table 7 - Status of Relocation Actions:**

CVFPB #	Property Owner	Relocated Tenant	Status of Relocation	Amount of Relocation Benefits Paid	Comments
14064	Daniel J. Luis	Kimberly Fuller	Complete	\$42,550.47	
14079	Jason G. Allen	Bill and Marilyn Jensen	Complete	\$26,800.57	
14079	Jason G. Allen	Trevor Jensen and Sammantha Pettet	Complete	\$31,130.00	
14079	Jason G. Allen	Ed Widener	Complete	\$12,272.00	
14079	Jason G. Allen	Jack Fouse	Complete	\$0	No response from tenant, who moved from Park.
14079	Jason G. Allen	Les Begley	Complete	\$1,100.00	
14079	Jason G. Allen	Judy Cordova	Complete	\$13,672.66	
14079	Jason G. Allen	Sarah Fite	Complete	\$27,964.56	
14079	Jason G. Allen	David Haughton	Complete	\$2,402.78	
14079	Jason G. Allen	Jason G. Allen	Complete	\$24,754.99	

➤ **Element 8 Closeout Process:**

- Feature 1: Closeout Process
  - On November 15, 2013 TRLIA submitted its initial draft of Closeout Documentation for the UYRLIP project for DWR’s review. As part of that submission, TRLIA requested a release of retention (\$1,042,447) for the portion of the project that has been completed. As of the date of this report DWR has not yet responded to TRLIA’s request. TRLIA will continue to work with DWR and coordinate on the closeout of completed items during the 26<sup>th</sup> quarter. DWR has caught up on review of UYRLIP Statement of Cost reviews and provided additional True-Up payments as of November 2015. TRLIA expects that after these payments are processed, DWR will work to respond to retention and close-out requests. TRLIA’s goal is to have the November 2013 release of retention approved and sent to TRLIA as soon as possible.

**This issue is listed in the Issue/Concerns portion of this report.**

➤ **Element 9 WPIC 200-yr Standard:**

Feature 1 Design: TRLIA will finalize plans and specifications and complete bid documents during the 26<sup>th</sup> quarter.

- Feature 2 Permitting:
  - See Attachment 1 for permits listing
  - Certification of CEQA has been postponed to allow TRLIA to work with interested Native American tribes in addressing cultural concerns. Certification of CEQA is not expected until early 2016(Quarter 26).
  - Because CEQA certification has been postponed, TRLIA now anticipates receipt of the Section 2081, Section 401, and 1600 permits in the 26<sup>th</sup> quarter. All other permits are expected in Quarter 25.
- Feature 3 Right of Way Acquisition: TRLIA submitted an update to the ULIP Real Estate Plan and the WPIC Real Estate Plan to DWR in August, 2015. ~~To date, comments have not been received and the plan has not been approved.~~ Comments were received by email from DWR on December 31, 2015. The plan has not been approved to date. (DWR edit on 4-12-2016)  
The engineering requirements were revised in the WPIC area. Appraisals have been updated and we anticipate making revised offers during the 26<sup>th</sup> Quarter.

**Table 7 – List of FAPS and Cadastral Approval Status**

Number	CVFPB #	OWNER	Number of Parcels	DWR RE Approval Status	DWR Cadastral Approval Status
1	14087	Miller-Belza-Peck	1		
2	14088	Rue & Forsman Real Estate LLC	1		
3	14089	Latigo Farms LLC (Includes Uneconomic Remnant)	2		
4	14090	Alfaro Family Trust (Includes Uneconomic Remnant)	5		
			9	0	0

**Table 8 – Property Acquisition Status**

CVFPB	APN	OWNER	ESA Completed	Receipt of Legals and Plats (or revision)	Appraisal submitted to TRLIA	Appraisal submitted to DWR	Appraisal Approved by DWR	Just Compensation Approved	Offer Made	Comments
14090	014-270-084 014-270-105 014-270-106 014-350-065 014-360-002	Alfaro Family Trust	12/29/2014	1/28/2015	1/23/2015	1/23/2015		1/23/2015		Revised offer being made on updated appraisal

CVFPB	APN	OWNER	ESA Completed	Receipt of Legals and Plats (or revision)	Appraisal submitted to TRLIA	Appraisal submitted to DWR	Appraisal Approved by DWR	Just Compensation Approved	Offer Made	Comments
14089	014-360-011 014-360-013	Latigo Farms, LLC	12/29/2014		8/31/2012				4/8/2013 9/25/2013	Suit filed; Property owners have stipulated to possession
14088	016-050-023	Rue & Forsman Real Estate, LLC	12/24/2014	1/28/2015						Revised offer being made on updated appraisal
14087	016-070-018	Miller-Belza-Peck	12/24/2014	1/28/2015	9/12/2014	10/21/2014		10/3/2014	10/15/2014	Revised offer being made on updated appraisal

- **Land Transfer:** TRLIA will continue to work with state during the 26<sup>th</sup> quarter on land transfer of the WPIC properties. Completion of the land transfer process by June 30, 2016 (current UYLIP funding agreement date is problematic) and is anticipated to extend into 2017 and be completed by the end of 2017. On October 27, 2015 (25<sup>th</sup> quarter) TRLIA requested DWR extend the UYLIP funding agreement to December 31, 2017 to allow the land transfer process and other work identified in this report to be completed.

**This issue is listed in the Issue/Concerns portion of this report**

- Feature 4 Right of Way Support:
  - The engineering requirements were revised in the WPIC area. Appraisals have been updated and we anticipate making revised offers during the 26<sup>th</sup> Quarter.
  - Prior to the UYLIP 3<sup>rd</sup> funding amendment being approved, TRLIA filed an eminent domain action against Latigo Farms LLC to acquire property rights need for this element. TRLIA will continue working on this eminent domain action in the 26th quarter. The trial in this action is scheduled to begin June 28, 2016. The deadline for the parties to exchange valuation data is March 30, 2016.
  - Coordination with UPRR will continue regarding construction of the project.
- Feature 5 Construction Management: Construction management will begin once permits have been received and contracting begins. Contracting for construction is expected to begin in January 2016 (Quarter 26).
- Feature 6 Construction: Construction is scheduled to begin in April 2016 (Quarter 27), pending receipt of all necessary permits. Beginning construction in 2016 will necessitate the extension of the Funding Agreement.

**This issue is listed in the Issue/Concerns portion of this report**

- Feature 7 Updated O&M Manual: No work is anticipated in the 25<sup>th</sup> quarter.

➤ **Element 10 ULE 86' Break Area 200-yr Standard:**

- On September 24, 2014 the UYLIP funding agreement was amended for the 3<sup>rd</sup> time to include this Element.
- Feature 1 Permitting: **This Feature is complete**
- Feature 4 Construction: **This Feature is complete**
- Feature 5 Construction Management: Construction Management will continue during in the 26<sup>th</sup> quarter to ensure winter permit conditions are maintained.

● **Environmental matters:**

- See Project Element 3 Feature 5 Environmental Mitigation above for this information for Project Elements 1 to 8.
- See Project Element 9 Feature 2 Permitting for this information for Project Element 9.

● **Status of permits, easements, rights-of-way, and approvals as may be required by other State, federal, and/or local agencies:**

- **Element 9:** See Element 9 Feature 2 above for status and attachment 1 for list.
- **Element 10:** See Element 10 Feature 1 for status and attachment 2 for list. **Completed**

● **Major accomplishments planned for the quarter (i.e. tasks to be completed, milestones to be met, meetings to be held or attended, etc.);**

- None

● **Issues/concerns that have, will, or could affect the schedule or budget, with a recommendation on how to correct the matter:**

- **Issue 1:** Western Aggregate has requested TRLIA to convert their current railway easement into a floating railway easement on the properties that TRLIA seeks to acquire from Western Aggregates, but also along other sections of the Upper Yuba Project levee and O&M corridors where Western Aggregates does not currently have any ownership interest. In the 16<sup>th</sup> quarter, TRLIA met with DWR officials about this request and DWR has indicated that the CVFPB is the lead agency on this item. During the 26<sup>nd</sup> quarter TRLIA will continue to negotiate with Western Aggregates

on this item. TRLIA has brought on a mediator to help resolve the issues associated with this item.

**Recommended Solution:** DWR support TRLIA as negotiations with the CVFPB transpire for the approval of the Western Aggregate floating easement request.

- **Issue 2:** TRLIA has submitted an initial draft of Project Closeout materials in electronic format for DWR's review. This Project Closeout Documentation report presents a compilation of all of the required project closeout documentation that has been prepared to date. As part of this submission, TRLIA presented a request for a partial release of retention of the work completed through 15<sup>th</sup> Quarter in the amount of \$2,448,160 less credit for interest earned State Funding in the amount of \$106,799 for a net release of \$2,341,361. TRLIA is prepared to work with State to respond to any inquiries related to this request. As TRLIA continues to expend funds on the project and other efforts, a release of retention will help TRLIA to cash flow the remainder of this project.

**Recommended Solution:** DWR review TRLIA's request and provide comments on the request and at the same time commence the process of a partial release of retention for those elements deemed complete.

- **Issue 3:** TRLIA will be submitting a request to extend the funding agreement for multiple reasons:

1. Land transfer to the state for the UYLIP and UYLIP/WPIC is anticipated to extend into 2017 and be completed by the end of 2017;
2. The extended time to complete the CEQA UYLIP WIPC amendment due to issues raised by Native Americans. TRLIA anticipates that all CEQA actions and permits necessary to construct the project will be received by May 2016;
3. The time required to obtain the CVFPB encroachment permit due to the delay of the WPIC CEQA document;
4. The time that is required to obtain permits from the U.S. Army Corps of Engineers pursuant to 33 USC 408 under the Agency's new implementation guidance; and
5. Due items 2, 3, & 4 above the construction could stretch into 2017. Post-construction efforts will occur until fall 2017.

**Recommend Solution:** DWR amend funding agreement to support construction delay. (TRLIA submitted the extension request on October 27, 2015)

- **Describe differences between the work to be performed and the work outlined in the Overall Work Plan, including anticipated change orders:**

- TRLIA updated the OAWP Budget for DWR's review during 25<sup>th</sup> Quarter. The forecasted work for the quarter is reflective of this updated budget.





- **Any litigation, proceedings or claims relating to the Project:** None

## 5. Cost Information by Project Element:

With the 5<sup>th</sup> QWP, TRLIA evaluated the Overall Work Plan Budget and prepared a comprehensive updated the budget from the UYRLIP project. This updated reflected construction on the completed work within Element 1 as well as the work bid for Elements 3&4. The updated budgets took into consideration the savings in construction costs as well other minor adjustments in the Overall Work Plan individual feature budgets. As part of the 6<sup>th</sup> QWP, TRLIA submitted a Revised Overall Work Plan Budget that made some corrections to the budget submitted as part of the 5<sup>th</sup> QWP. With the 9<sup>th</sup> Quarterly Work Plan, TRLIA incorporated Element 1A into the Project and provided an additional update to the Overall Work Plan Budget.

With the 15<sup>th</sup> QWP, as noted above, TRLIA incorporated additional amendments to the budget to reflect accurate costs for the project related features as well as added the budget for Elements 8 and 9, the cost associated with Close out efforts as well as work related to 200-Year Compliance Actions on the WPIC respectively.

In the 18<sup>th</sup> quarter TRLIA shifted the remaining budget within the completed Element 1 to Element 1A to adjust for the budget exceeded within the Construction, Construction Management within Element 1A.

As Part of the 19<sup>th</sup> Quarter Work Plan, and at the same time an associated Amendment No. 3 to the Funding Agreement, TRLIA updated the Overall Work Plan Budget.

With this 25<sup>th</sup> Quarter Work Plan, based on actual costs incurred to date and updated project budgets for the WPIC and 1986 Break Site work, TRLIA shifted budget between elements.

This 26<sup>th</sup> Quarter work plan reflects all of those prior updates to the Overall Work Plan Budget.

- **List of changes planned to Overall Work Plan Budget and revised Overall Work Plan Budget (if needed):**

No Additional changes noted within this Work Plan.

- **Projected costs compared to Overall Work Plan Budget**

- **Element 1: Flatten Waterside Levee Slope – Sta 3+00 to 33+50**

No additional construction costs are forecasted to be incurred during the 18<sup>th</sup> quarter as the Element is **Complete**.

- **Element 1A: Landside Levee Improvement – Sta 7+00 to 8+20 (Shadpad Road)**

This Element was added as of the 9<sup>th</sup> Quarter. TRLIA expects to continue work on Right of Way activities in the 25<sup>th</sup> Quarter. TRLIA plans to expend approximately \$900 during the 25<sup>th</sup> Quarter to continue ROW acquisition finalization.

- **Element 2: Levee Improvements (Slurry Wall and Waterside Slope Erosion Protection) Pre-CEQA Determination Support Efforts**  
This element only includes the preliminary alternatives analysis and CEQA/NEPA document preparation (that work only eligible for 50% cost share by the State). This element is **Complete** and there are no costs forecasted as part of this QWP. Upon completion of the 16<sup>th</sup> Quarter, approximately (100%) \$1,065,000 amended budget has been expended.
- **Element 3: Levee Improvements (Slurry Wall and Waterside Slope Erosion Protection Support**  
This element was revised in the 5<sup>th</sup> Quarter to include the preliminary design, permitting preparation and Right of Way Support work that was previously included in Element 2. The amended overall budget for Element 3 is \$10.3 million and the amount forecasted to be expended this quarter is \$30,000. This amount, in conjunction with estimated prior expenses furthering Element 3 efforts, will result in having expended roughly 92% (\$9.5 million) of the Element's revised budget.
- **Element 4: Levee Improvements (Slurry Wall and Waterside Slope Erosion Protection) Construction – Sta 102+50 to 303+59**  
No additional construction costs are forecasted to be incurred during the 16<sup>th</sup> quarter as the Element is **complete**. At the completion of the Quarter, TRLIA expects to have expended approximately 90% (\$8.7 million) of the revised budget for this element.
- **Element 5: Prior Completed Work**  
This Element solely represents prior completed work submitted for crediting purposes. No additional costs in the element will be incurred during the funding agreement contract period.
- **Element 6 - Project Management, Legal, Community Relations support, Land Management, and Overhead:**  
TRLIA has estimated the amount of overhead expenses to be incurred in the quarter and allocated the Yuba share of those forecasted expenses to Element 6. TRLIA expects to allocate approximately \$77,000 of Overhead and Admin expenses in the quarter. After the quarter is complete, TRLIA will have expended roughly 86% of the amended Element 6 budget (\$4.2 million).
- **Element 7 – Right of Way Capital:**  
Right of Way acquisition activity will continue this Quarter. TRLIA has not forecasted expenditures this quarter, however, the timing of actual expenditures could change. After the quarter is complete, TRLIA will have expended roughly 54% (\$2.7 million) of the revised Element 7 (\$5.4 million) budget.
- **Element 8 – Project Closeout efforts:**  
This element was added in the 14<sup>th</sup> quarter. TRLIA expects to continue efforts in the 26<sup>th</sup> quarter and expects to expend \$10,000 on efforts associated with TRLIA request to process a partial release of retention. TRLIA plans to continue elevating this issue during the quarter with DWR to process this release of retention.

➤ **Element 9 – WPIC 200-Yr Standard:**

This element was added in the 15<sup>th</sup> quarter and the budget has been revised during this 25<sup>th</sup> Quarter. In the 26<sup>th</sup> quarter TRLIA expects to expend approximately \$658,000. Construction activities have been delayed to next season in order to coordinate the permitting requirements and CEQA/NEPA activities of the project.

➤ **Element 10 – Yuba ULDC Remediation 1986 Break Site:**

This element was added during the 20<sup>th</sup> quarter and the budget has been revised down this quarter based on actual construction contracts let to date. The total budget for this Element is now \$870,000. In the 26<sup>th</sup> quarter TRLIA expects to expend \$4,000 as it finalizes and works to close out the work associated with this element.

**The amount of funds sought from the State and the Amount of Local Funds intended to be expended:** As presented in Item 3 of this 24<sup>th</sup> Quarter Work Plan:

<b>Quarterly Work Plan Summary</b>				
<b>Description</b>	<b>State Share</b>	<b>Local Share</b>	<b>Total</b>	<b>Local Credit Applied</b>
Elements 7 & 9 - ROW Acquisition	\$56,000	\$24,000	\$80,000	\$0
Elements 1 through 6, 8, 9 & 10	\$489,964	\$209,985	\$699,948	\$0
<b>Total</b>	<b>\$545,964</b>	<b>\$233,985</b>	<b>\$779,948</b>	<b>\$0</b>

<b>Quarterly Summary for Real Estate Activity</b>	
State Share Elements 7 & 9	\$56,000
Local Credit Applied Elements 1	\$0
<b>Estimated Total Quarterly State Real Estate Funding</b>	<b>\$56,000</b>

<b>Quarterly State Share Advance Summary for Non-Real Estate Activity</b>	
75% of State Share Elements 1 through 6 & 8 through 10	\$367,473
plus/minus State Share true-up for Prior Quarters [1]	-\$474,967
<b>Total Funding for State Share at Start of 26<sup>th</sup> Quarter (negative represents surplus funding from prior quarters)</b>	<b>-\$107,494</b>

[1] Estimated, see reconciliation of Prior State Funding.

<b>Quarterly Local Credit Summary for Non-Real Estate Activity</b>	
Local Credit Elements 1 through 6 & 8 through 10	\$0
plus/minus Local Credit true-up for Prior Quarters [1]	\$0
<b>Total Advance for Local Credit at Start of 26<sup>th</sup> Quarter</b>	<b>\$0</b>

[1] See Reconciliation of Prior State Funding.

**Reconciliation of State Advance Funding for Construction**  
**As of 25<sup>th</sup> Quarter - State Share: Based on 24<sup>th</sup> QPR plus 25<sup>th</sup> QWP**  
**(as adjusted for schedule and other factors)**

Total Non-Real Estate Non-Creditable Expenses (Elements 1 – 6, 8 – 10) through 24th Quarter [1]	\$24,913,296
25 <sup>th</sup> Quarter Total Non-Real Estate Forecasted Expenses [2]	\$672,221
Total Expenses Forecasted through 25 <sup>th</sup> Quarter	<b>\$25,585,517</b>
State Share True-Up Calculations	
Total State Share of Above Expenses	\$17,776,500
Total State Funding Due (net of 10% Retention on Prior Expenses)	<b>\$15,998,850</b>
Funding To Date	
1st Quarter Advance	\$451,818
1st Quarter True-Up	\$70,578
2nd Quarter Advance	\$801,157
3rd Quarter Advance	\$1,981,246
2nd Quarter True-Up	\$53,088
4th Quarter Advance	\$3,468,242
3rd Quarter True-Up	\$160,754
4th Quarter Advance	\$1,981,246
9th Quarter True-Up	\$429,363
10th Quarter True-Up	\$719,915
11th Quarter Advance	\$476,664
11th Quarter True-Up	\$582,451
12th Quarter True-Up	\$277,671
13th Quarter True-Up	\$1,075,072
14th Quarter True-Up	\$692,148
15th Quarter Advance	\$267,234
2nd Quarter revised True-Up	\$92,631
16th Quarter True-Up	\$37,164
17th Quarter True-Up	\$153,917
18th Quarter Advance	\$87,124
18th Quarter True-Up	\$44,783
20th Quarter Advance	\$197,925
19th, 20th, 21st & WPIC True-Ups	\$706,809
22nd Quarter Advance	\$184,081
22nd Quarter True-Up	\$209,025
24 <sup>th</sup> Quarter Advance	\$1,271,711
Total State Share Funding Received	<b>\$16,473,817</b>
<b>Estimated State Share Construction Funding Due as of 25<sup>th</sup> Quarter</b>	<b>-\$474,967</b>

**As of 25<sup>th</sup> Quarter - Local Share: Based on 24<sup>th</sup> QPR plus 25<sup>th</sup> QWP  
(as adjusted for schedule and other factors)**

Local Share True-Up Calculations	
Local Share of Above Forecasted Expenses	\$7,821,075
<b>Total Local Funding Credit Due</b>	<b>\$6,619,616</b>
Funding To Date	
Local Credit Advanced (from 1st Quarter)	\$410,772
Local Credit Advanced (from 2nd Quarter)	\$343,623
Local Credit Advanced (from 3rd Quarter)	\$1,533,856
Local Credit True-Up (from 2nd Quarter)	\$152,747
Local Credit Advanced (from 4th Quarter)	\$2,622,994
Local Credit True-Up (from 13th Quarter)	\$511,939
Local Credit True-Up (from 14th Quarter)	\$329,594
Local Credit True-Up (from 16th Quarter)	\$88,880
Local Credit True-Up (from 17th Quarter)	\$73,294
Local Credit Advanced (from 18th Quarter)	\$49,785
Local Credit True-Up (from 18th Quarter)	\$13,028
Local Credit Advanced (from 20th Quarter)	\$489,104
<b>Total Credit Funding Received</b>	<b>\$6,619,616</b>
<b>Local Credit Due as of 25<sup>th</sup> Quarter [1]</b>	<b>\$0</b>

[1] 24<sup>th</sup> Quarter QPR Costs Subject to review by DWR, 25<sup>th</sup> QWP adjusted for actual expenses. Local Credit is limited to available credit. Note: No local credit remains.

**The following tables present Element and Feature level details for the 26<sup>th</sup> Quarterly Work Plan:**

Summary of TRLIA Quarterly Work Plan Budget  
Upper Yuba

For Period January/February/March 2016

SUMMARY ALL ELEMENTS

Elements and Features	Overall Budget [1]			Estimated Cumulative Expenses [2]			Forecasted Remaining Budget			Quarterly Forecast			Advance
	Total	State	Local	Total	State Share	Local Share	Total	State Share	Local Share	Total	State	Local	State Share
Formula	a	b	c = a-b	d	e	f = d-e	g = a-d	h = b-e	i = c-f	j	k	l=j-k	l=k*75%
<b>Quarterly Advance Request Elements (Not Including Real Estate)</b>													
Element 1: Flatten Waterside Levee Slope	\$782,007	\$547,405	\$234,602	\$728,160	\$509,712	\$218,448	\$53,847	\$37,693	\$16,154	\$0	\$0	\$0	\$0
Element 1A: Land Side Improvement (Shadpad)	\$1,060,000	\$742,000	\$318,000	\$1,037,729	\$726,411	\$311,319	\$22,271	\$15,589	\$6,681	\$900	\$630	\$270	\$473
Element 2: Pre-CEQA Determination Support	\$1,069,913	\$534,956	\$534,956	\$1,065,054	\$532,527	\$532,527	\$4,859	\$2,430	\$2,430	\$0	\$0	\$0	\$0
Element 3: Levee Improvements Support Work	\$10,301,168	\$7,210,817	\$3,090,350	\$9,452,716	\$6,616,901	\$2,835,815	\$848,452	\$593,916	\$254,536	\$30,000	\$21,000	\$9,000	\$15,750
Element 4: Levee Improvements Construction	\$9,800,000	\$6,860,000	\$2,940,000	\$8,698,919	\$6,089,243	\$2,609,676	\$1,101,081	\$770,757	\$330,324	\$0	\$0	\$0	\$0
Element 6: Admin & Overhead	\$4,901,913	\$3,431,339	\$1,470,574	\$4,131,683	\$2,892,178	\$1,239,505	\$770,230	\$539,161	\$231,069	\$77,000	\$53,900	\$23,100	\$40,425
Element 8: Project Closeout Efforts	\$200,000	\$140,000	\$60,000	\$7,872	\$5,511	\$2,362	\$192,128	\$134,489	\$57,638	\$10,000	\$7,000	\$3,000	\$5,250
Element 9: WPIC 200-Yr Standard (net of ROW)	\$15,171,000	\$10,619,700	\$4,551,300	\$1,971,838	\$1,380,287	\$591,552	\$13,199,162	\$9,239,413	\$3,959,748	\$578,048	\$404,634	\$173,415	\$303,475
Element 10: Yuba ULDC Remediation 1986 Brea	\$870,000	\$609,000	\$261,000	\$311,710	\$218,197	\$93,513	\$558,290	\$390,803	\$167,487	\$4,000	\$2,800	\$1,200	\$2,100
Sub-Total Elements 1 through 4, 6, 8 & 9	\$44,156,000	\$30,695,217	\$13,460,783	\$27,405,681	\$18,970,966	\$8,434,715	\$16,750,319	\$11,724,251	\$5,026,067	\$699,948	\$489,964	\$209,985	\$367,473
<b>Element 5 Credit [Additional Credit to Come from other Element Expenses Incurred Prior to October 20, 2009 not Shown Here]</b>													
Element 5: Prior Completed Work	\$7,682,162	\$5,377,514	\$2,304,649	\$9,760,791	\$6,832,554	\$2,928,237	-\$2,078,629	-\$1,455,040	-\$623,589				
<b>Real Estate Forecast for Quarter</b>													
Element 7: Land Acquisition	\$5,373,838	\$3,761,687	\$1,612,151	\$2,713,260	\$1,899,282	\$813,978	\$2,660,578	\$1,862,404	\$798,173	\$0	\$0	\$0	
Element 9, Feature 9.3: WPIC - ROW Acquisition	\$609,000	\$426,300	\$182,700	\$209,275	\$146,493	\$62,783	\$399,725	\$279,808	\$119,918	\$80,000	\$56,000	\$24,000	
Subtotal Real Estate Forecast	\$5,982,838	\$4,187,987	\$1,794,851 #	\$2,922,535	\$2,045,775	\$876,761 #	\$3,060,303	\$2,142,212	\$918,091	\$80,000	\$56,000	\$24,000	
<b>Local Credit Reconciliation</b>													
<b>Quarterly Advance Calculation</b>													
75% of State Share of Eligible Elements	\$367,473												
plus Local Share Subject to Credit	\$0												
<b>Total</b>	<b>\$367,473</b>												
<b>Note: Payments are subject to true-up for actual expenses.</b>													
										<b>Total Local Share of Eligible Expenses this Quarter</b>			
										\$209,985 (From Above)			
										<b>Estimated Total Local Credit</b>			
										\$6,619,616 (Approved Local Credit Amount)			
										Local Credit Advanced (from 1st Quarter)			
										\$410,772			
										Local Credit Advanced (from 2nd Quarter)			
										\$343,623			
										Local Credit Advanced (from 3rd Quarter)			
										\$1,533,856			
										Local Credit True-Up (from 2nd Quarter)			
										\$152,747			
										Local Credit Advanced (from 4th Quarter)			
										\$2,622,994			
										Local Credit True-Up (from 13th Quarter)			
										\$511,939			
										Local Credit True-Up (from 14th Quarter)			
										\$329,594			
										Local Credit True-Up (from 16th Quarter)			
										\$88,880			
										Local Credit True-Up (from 17th Quarter)			
										\$73,294			
										Local Credit Advance (from 18th Quarter)			
										\$49,785			
										Local Credit True-Up (from 18th Quarter)			
										\$13,028			
										Local Credit Advance (from 20th Quarter)			
										\$502,132			
										Total Local Credit Received			
										\$6,632,644			
										Cumulative Prior Credit Due			
										\$0			
										Requested Local Credit to be Paid with Advance			
										\$0 (Limited to remaining credit available)			
										Credit Remaining After Advance			
										\$0			

"24QYubaSumm"

[1] As reflected in the 19th Quarterly Work Plan and Proposed Amendment No. 3 for the Upper Yuba Project.

[2] Reflects estimated expenses through the 23rd Quarter based on prior actual expenses through June 30, 2015 (23rd QPR) and estimated of expenses from June to September 2015 based on the 24th Quarterly Work Plan with any necessary adjustments for actual expenses incurred or changes in schedule.

Completed Element Tables have been removed from this Report. These Elements Include Elements 1, 2, 4 & 5

TRLIA Quarterly Work Plan Budget  
Upper Yuba

For Period January/February/March 2016

ELEMENT 1A

State Share Percentage	Revised Overall Budget [1]			Estimated Cumulative			Forecasted Remaining Budget			% of Total Budget Remaining	26th Quarterly Forecast			% of Remaining Budget	
	Total	State	Local	Total	State Share	Local Share	Total	State Share	Local Share		Total	State	Local		
<b>Elements and Features</b>															
<b>Formula</b>	a	b	c=axb	d = b-c	e	f=axe	g = e-f	h=b-e	i=c-f	j=d-g	k	l=axk	m=k-l		
	(Increased)														
<b>Element 1A: Land Side Levee Improvement</b>															
<b>- Sta 7+00 to 8+20 (Shadpad Road)</b>															
1A.1: Design	70%	\$80,000	\$56,000	\$24,000	\$78,792	\$55,155	\$23,638	\$1,208	\$845	\$362	2%	\$0	\$0	\$0	0%
1A.2: Permitting	70%	\$105,000	\$73,500	\$31,500	\$101,848	\$71,294	\$30,554	\$3,152	\$2,206	\$946	3%	\$0	\$0	\$0	0%
1A.3: Right of Way	70%	\$240,000	\$168,000	\$72,000	\$195,319	\$136,723	\$58,596	\$44,681	\$31,277	\$13,404	19%	\$900	\$630	\$270	2%
1A.4: Construction Management	70%	\$175,000	\$122,500	\$52,500	\$181,602	\$127,122	\$54,481	-\$6,602	-\$4,622	-\$1,981	-4%	\$0	\$0	\$0	0%
1A.5: Construction	70%	\$455,000	\$318,500	\$136,500	\$480,168	\$336,117	\$144,050	-\$25,168	-\$17,617	-\$7,550	-6%	\$0	\$0	\$0	0%
1A.6: O&M Manual addendum	70%	\$5,000	\$3,500	\$1,500	\$0	\$0	\$0	\$5,000	\$3,500	\$1,500	100%	\$0	\$0	\$0	0%
<b>Subtotal Element 2</b>		<b>\$1,060,000</b>	<b>\$742,000</b>	<b>\$318,000</b>	<b>\$1,037,729</b>	<b>\$726,411</b>	<b>\$311,319</b>	<b>\$22,271</b>	<b>\$15,589</b>	<b>\$6,681</b>	<b>2%</b>	<b>\$900</b>	<b>\$630</b>	<b>\$270</b>	<b>4%</b>

"26QYubaElem1A"

[1] Revised per this Upper Yuba 25th Quarterly Work Plan.

[2] Reflects estimated expenses through the 23rd Quarter based on prior actual expenses through June 30, 2015 (23rd QPR) and estimated of expenses from June to September 2015 based on the 24th Quarterly Work Plan with any necessary adjustments for actual expenses incurred or changes in schedule.

TRLIA Quarterly Work Plan Budget  
Upper Yuba

For Period January/February/March 2016

ELEMENT 3

Elements and Features	State Share Percentage	Revised Overall Budget [1]			Estimated Cumulative Expenses (December 2015) [2]			Forecasted Remaining Budget			% of Total Budget Remaining	26th Quarterly Forecast			% of Remaining Budget
		Total	State	Local	Total	State Share	Local Share	Total	State Share	Local Share		Total	State	Local	
Formula	a	b	c=axb	d = b-c	e	f=axe	g = e-f	h=b-e	i=c-f	j=d-g		k	l=axk	m=k-l	
<small>*Based on Overall Workplan</small>															
<b>Element 3: Levee Improvements (Slurry Wall and Waterside Slope Erosion Protection) Support Work</b>															
3-2.3: Preliminary Design	70%	\$1,378,778	\$965,145	\$413,633	\$1,368,300	\$957,810	\$410,490	\$10,478	\$7,335	\$3,144	1%	\$0	\$0	\$0	0%
3-2.4: Permitting Preparation	70%	\$225,344	\$157,741	\$67,603	\$33,937	\$23,756	\$10,181	\$191,407	\$133,985	\$57,422	85%	\$0	\$0	\$0	0%
3-2.5: Right of Way Support	70%	\$2,935,767	\$2,055,037	\$880,730	\$2,985,761	\$2,090,033	\$895,728	-\$49,994	-\$34,996	-\$14,998	-2%	\$30,000	\$21,000	\$9,000	-60%
3.1: Final Design	70%	\$2,279,307	\$1,595,515	\$683,792	\$2,251,809	\$1,576,266	\$675,543	\$27,498	\$19,249	\$8,249	1%	\$0	\$0	\$0	0%
3.2: Permitting	70%	\$702,461	\$491,723	\$210,738	\$164,690	\$115,283	\$49,407	\$537,771	\$376,440	\$161,331	77%	\$0	\$0	\$0	0%
3.4: Construction Management	70%	\$2,175,000	\$1,522,500	\$652,500	\$2,160,909	\$1,512,636	\$648,273	\$14,091	\$9,864	\$4,227	1%	\$0	\$0	\$0	0%
3.5: Environmental Mitigation	70%	\$415,091	\$290,564	\$124,527	\$437,398	\$306,178	\$131,219	-\$22,307	-\$15,615	-\$6,692	-5%	\$0	\$0	\$0	0%
3.6: O&M Manual addendum	70%	\$189,419	\$132,593	\$56,826	\$49,912	\$34,939	\$14,974	\$139,506	\$97,654	\$41,852	74%	\$0	\$0	\$0	0%
<b>Subtotal Element 3</b>		<b>\$10,301,168</b>	<b>\$7,210,817</b>	<b>\$3,090,350</b>	<b>\$9,452,716</b>	<b>\$6,616,901</b>	<b>\$2,835,815</b>	<b>\$848,452</b>	<b>\$593,916</b>	<b>\$254,536</b>	<b>8%</b>	<b>\$30,000</b>	<b>\$21,000</b>	<b>\$9,000</b>	<b>4%</b>

"26QYubaElem3"

[1] Revised per this Upper Yuba 25th Quarterly Work Plan.

[2] Reflects estimated expenses through the 23rd Quarter based on prior actual expenses through June 30, 2015 (23rd QPR) and estimated of expenses from June to September 2015 based on the 24th Quarterly Work Plan with any necessary adjustments for actual expenses incurred or changes in schedule.



TRLIA Quarterly Work Plan Budget  
Upper Yuba

For Period January/February/March 2016

ELEMENT 6

Elements and Features	State Share Percentage	Revised Overall Budget [1]			Estimated Cumulative Expenses (December 2015) [2]			Forecasted Remaining Budget			% of Total Budget Remaining	26th Quarterly Forecast			% of Remaining Budget
		Total	State	Local	Total	State Share	Local Share	Total	State Share	Local Share		Total	State	Local	
Formula	a	b	c=axb	d = b-c	e	f=axe	g = e-f	h=b-e	i=c-f	j=d-g	k	l=axk	m=k-l		
<small>*Based on Overall Workplan</small>															
<b>Element 6: Project Management, legal support, community relations support, land management support, and overhead</b>															
6.1 - TRLIA Salaries/Benefits	70%	\$1,750,714	\$1,225,500	\$525,214	\$1,456,528	\$1,019,570	\$436,958	\$294,186	\$205,930	\$88,256	17%	\$61,000	\$42,700	\$18,300	21%
6.2 - TRLIA Consultant Exp.	70%	\$1,090,377	\$763,264	\$327,113	\$982,950	\$688,065	\$294,885	\$107,427	\$75,199	\$32,228	10%	\$6,000	\$4,200	\$1,800	6%
6.3 - TRLIA Legal Support	70%	\$364,235	\$254,964	\$109,270	\$344,020	\$240,814	\$103,206	\$20,215	\$14,150	\$6,064	6%	\$1,000	\$700	\$300	5%
6.4 - TRLIA Travel Expenses	70%	\$9,992	\$6,995	\$2,998	\$94	\$66	\$28	\$9,898	\$6,929	\$2,970	99%	\$0	\$0	\$0	0%
6.5 - TRLIA General Expenses	70%	\$256,643	\$179,650	\$76,993	\$192,280	\$134,596	\$57,684	\$64,363	\$45,054	\$19,309	25%	\$8,000	\$5,600	\$2,400	12%
6.6 - TRLIA Insurance	70%	\$1,384,119	\$968,883	\$415,236	\$1,137,661	\$796,363	\$341,298	\$246,458	\$172,521	\$73,937	18%	\$0	\$0	\$0	0%
6.7 - TRLIA Travel - Vehicle Lease	70%	\$26,714	\$18,700	\$8,014	\$18,150	\$12,705	\$5,445	\$8,564	\$5,995	\$2,569	32%	\$1,000	\$700	\$300	12%
6.8 - TRLIA Memberships	70%	\$19,119	\$13,383	\$5,736	\$0	\$0	\$0	\$19,119	\$13,383	\$5,736	100%	\$0	\$0	\$0	0%
<b>Subtotal Element 6</b>		<b>\$4,901,913</b>	<b>\$3,431,339</b>	<b>\$1,470,574</b>	<b>\$4,131,683</b>	<b>\$2,892,178</b>	<b>\$1,239,505</b>	<b>\$770,230</b>	<b>\$539,161</b>	<b>\$231,069</b>	<b>16%</b>	<b>\$77,000</b>	<b>\$53,900</b>	<b>\$23,100</b>	<b>10%</b>

"26QYubaElem6"

[1] Revised per this Upper Yuba 25th Quarterly Work Plan.

[2] Reflects estimated expenses through the 23rd Quarter based on prior actual expenses through June 30, 2015 (23rd QPR) and estimated of expenses from June to September 2015 based on the 24th Quarterly Work Plan with any necessary adjustments for actual expenses incurred or changes in schedule.

TRLIA Quarterly Work Plan Budget  
Upper Yuba

For Period January/February/March 2016

ELEMENT 7

Elements and Features	State Share Percentage	Revised Overall Budget [1]			Estimated Cumulative Expenses (December 2015) [2]			Forecasted Remaining Budget			% of Total Budget Remaining	26th Quarterly Forecast			% of Remaining Budget
		Total	State	Local	Total	State Share	Local Share	Total	State Share	Local Share		Total	State	Local	
Formula	a	b	c=axb	d = b-c	e	f=axe	g = e-f	h=b-e	i=c-f	j=d-g	k	l=axk	m=k-l		
<small>*Based on Overall Workplan</small>															
<b>Element 7: Right of Way Capital</b>															
7-3.3 - Right of Way Capital	70%	\$5,373,838	\$3,761,687	\$1,612,151	\$2,713,260	\$1,899,282	\$813,978	\$2,660,578	\$1,862,404	\$798,173	50%	\$0	\$0	\$0	0%
<b>Subtotal Element 7</b>		<b>\$5,373,838</b>	<b>\$3,761,687</b>	<b>\$1,612,151</b>	<b>\$2,713,260</b>	<b>\$1,899,282</b>	<b>\$813,978</b>	<b>\$2,660,578</b>	<b>\$1,862,404</b>	<b>\$798,173</b>	<b>50%</b>	<b>\$0</b>	<b>\$0</b>	<b>\$0</b>	<b>20%</b>

"26QYubaElem7"

[1] Revised per this Upper Yuba 25th Quarterly Work Plan.

[2] Reflects estimated expenses through the 23rd Quarter based on prior actual expenses through June 30, 2015 (23rd QPR) and estimated of expenses from June to September 2015 based on the 24th Quarterly Work Plan with any necessary adjustments for actual expenses incurred or changes in schedule.

TRLIA Quarterly Work Plan Budget  
Upper Yuba

For Period January/February/March 2016

ELEMENT 8

Elements and Features	State Share Percentage	Revised Overall Budget [1]			Estimated Cumulative			Forecasted Remaining Budget			% of Total Budget Remaining	26th Quarterly Forecast			% of Remaining Budget
		Total	State	Local	Total	State Share	Local Share	Total	State Share	Local Share		Total	State	Local	
Formula	a	b	c=axb	d = b-c	e	f=axe	g = e-f	h=b-e	i=c-f	j=d-g	k	l=axk	m=k-l		
<small>*Based on Overall Workplan</small>															
<b>Element 8: Project Closeout Efforts</b>															
8.1 - Project Close Out Efforts	70%	\$200,000	\$140,000	\$60,000	\$7,872	\$5,511	\$2,362	\$192,128	\$134,489	\$57,638	96%	\$10,000	\$7,000	\$3,000	5%
<b>Subtotal Element 8</b>		<b>\$200,000</b>	<b>\$140,000</b>	<b>\$60,000</b>	<b>\$7,872</b>	<b>\$5,511</b>	<b>\$2,362</b>	<b>\$192,128</b>	<b>\$134,489</b>	<b>\$57,638</b>	<b>96%</b>	<b>\$10,000</b>	<b>\$7,000</b>	<b>\$3,000</b>	<b>5%</b>

"26QYubaElem8"

[1] Revised per this Upper Yuba 25th Quarterly Work Plan.

[2] Reflects estimated expenses through the 23rd Quarter based on prior actual expenses through June 30, 2015 (23rd QPR) and estimated of expenses from June to September 2015 based on the 24th Quarterly Work Plan with any necessary adjustments for actual expenses incurred or changes in schedule.

TRLIA Quarterly Work Plan Budget  
Upper Yuba

For Period January/February/March 2016

ELEMENT 9

Elements and Features	State Share	Revised Overall Budget [1]			Estimated Cumulative			Forecasted Remaining Budget			% of Total Budget Remaining	26th Quarterly Forecast			% of Remaining Budget
		Total	State	Local	Total	State Share	Local	Total	State	Local		Total	State	Local	
Formula	a	b	c=axb <small>(c=state % of overall workplan)</small>	d = b-c	e	f=axe	g = e-f	h=b-e	i=c-f	j=d-g	k	l=axk	m=k-l		
<b>Element 9: WPIC 200-Yr Standard</b>															
9.1 - Design	70%	\$1,371,000	\$959,700	\$411,300	\$1,155,475	\$808,832	\$346,642	\$215,525	\$150,868	\$64,658	16%	\$197,291	\$138,104	\$59,187	92%
9.2 - Permitting & Environmental C	70%	\$759,000	\$531,300	\$227,700	\$660,312	\$462,218	\$198,094	\$98,688	\$69,082	\$29,606	13%	\$150,000	\$105,000	\$45,000	152%
9.3 - Right of Way Acquisition	70%	\$609,000	\$426,300	\$182,700	\$209,275	\$146,493	\$62,783	\$399,725	\$279,808	\$119,918	66%	\$80,000	\$56,000	\$24,000	20%
9.4 - Right of Way Support	70%	\$323,000	\$226,100	\$96,900	\$154,402	\$108,081	\$46,321	\$168,598	\$118,019	\$50,579	52%	\$43,350	\$30,345	\$13,005	26%
9.5 - Construction Management	70%	\$1,501,000	\$1,050,700	\$450,300	\$1,650	\$1,155	\$495	\$1,499,350	\$1,049,545	\$449,805	100%	\$187,407	\$131,185	\$56,222	12%
9.6 - Construction	70%	\$11,167,000	\$7,816,900	\$3,350,100	\$0	\$0	\$0	\$11,167,000	\$7,816,900	\$3,350,100	100%	\$0	\$0	\$0	0%
9.7 - O&M Manual addendum	70%	\$50,000	\$35,000	\$15,000	\$0	\$0	\$0	\$50,000	\$35,000	\$15,000	100%	\$0	\$0	\$0	0%
<b>Subtotal Element 9</b>		<b>\$15,780,000</b>	<b>\$11,046,000</b>	<b>\$4,734,000</b>	<b>\$2,181,113</b>	<b>\$1,526,779</b>	<b>\$654,334</b>	<b>\$13,598,887</b>	<b>\$9,519,221</b>	<b>\$4,079,666</b>	<b>86%</b>	<b>\$658,048</b>	<b>\$460,634</b>	<b>\$197,415</b>	<b>5%</b>

"26QYubaElem9"

[1] Revised per this Upper Yuba 25th Quarterly Work Plan.

[2] Reflects estimated expenses through the 23rd Quarter based on prior actual expenses through June 30, 2015 (23rd QPR) and estimated of expenses from June to September 2015 based on the 24th Quarterly Work Plan with any necessary adjustments for actual expenses incurred or changes in schedule.

TRLIA Quarterly Work Plan Budget  
Upper Yuba

For Period January/February/March 2016

ELEMENT 10

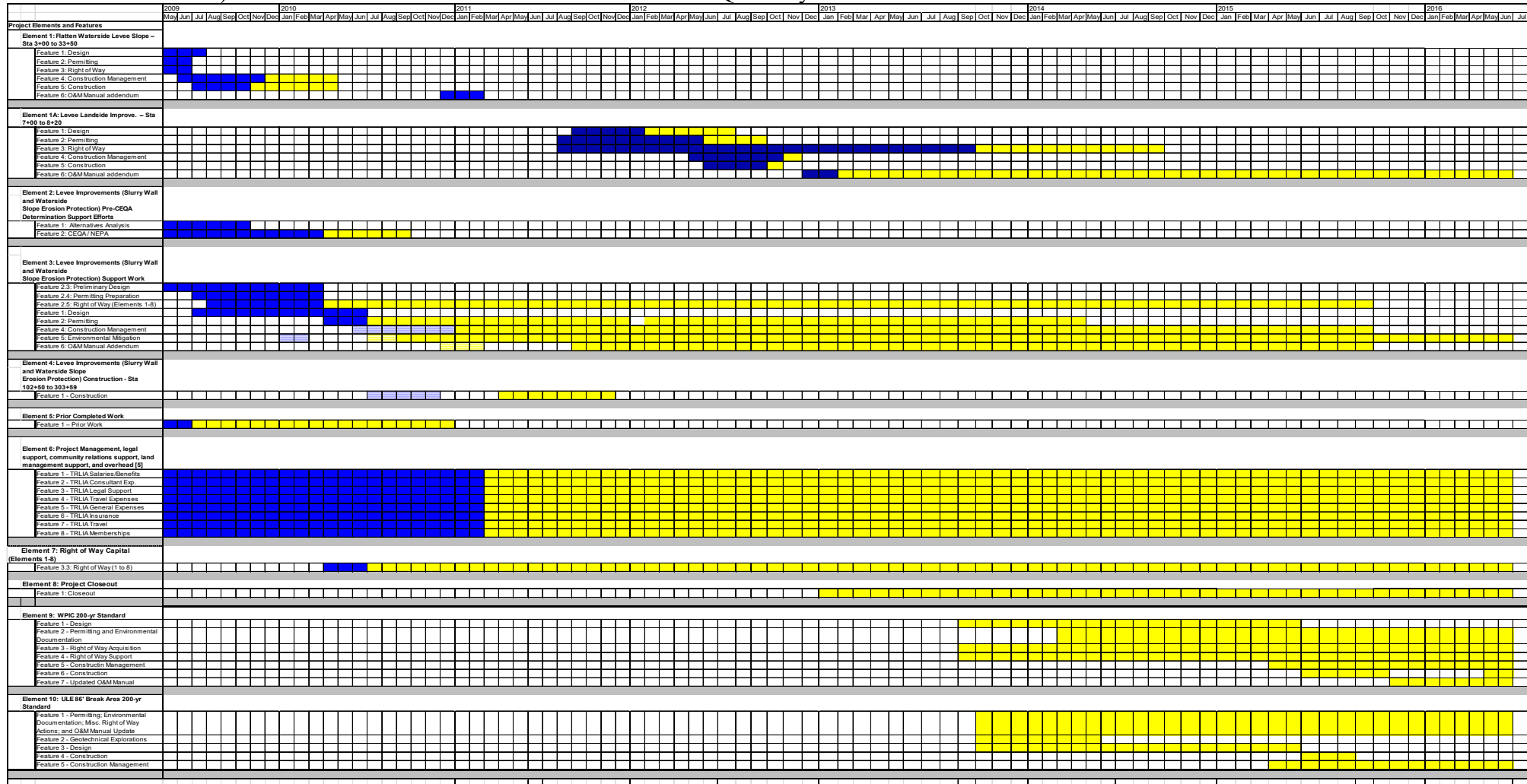
Elements and Features	State Share	Revised Overall Budget [1]			Estimated Cumulative			Forecasted Remaining Budget			% of Total Budget Remaining	26th Quarterly Forecast			% of Remaining Budget
		Total	State	Local	Total	State Share	Local	Total	State	Local		Total	State	Local	
Formula	a	b	c=axb <small>252000 x 70% Overall Workplan</small>	d = b-c	e	f=axe	g = e-f	h=b-e	i=c-f	j=d-g		k	l=axk	m=k-l	
<b>Element 10: Yuba ULDC Remediation 1986 Break Site</b>															
10.1 - Project Management	70%	\$110,000	\$77,000	\$33,000	\$40,644	\$28,451	\$12,193	\$69,356	\$48,549	\$20,807	63%	\$4,000	\$2,800	\$1,200	6%
10.2 - Geotechnical Explorations	70%	\$135,000	\$94,500	\$40,500	\$134,404	\$94,083	\$40,321	\$596	\$417	\$179	0%	\$0	\$0	\$0	0%
10.3 - Design	70%	\$40,000	\$28,000	\$12,000	\$363	\$254	\$109	\$39,637	\$27,746	\$11,891	99%	\$0	\$0	\$0	0%
10.4 - Construction	70%	\$475,000	\$332,500	\$142,500	\$100,000	\$70,000	\$30,000	\$375,000	\$262,500	\$112,500	79%	\$0	\$0	\$0	0%
10.5 - Construction Management	70%	\$110,000	\$77,000	\$33,000	\$36,298	\$25,409	\$10,889	\$73,702	\$51,591	\$22,111	67%	\$0	\$0	\$0	0%
<b>Subtotal Element 10</b>		<b>\$870,000</b>	<b>\$609,000</b>	<b>\$261,000</b>	<b>\$311,710</b>	<b>\$218,197</b>	<b>\$93,513</b>	<b>\$558,290</b>	<b>\$390,803</b>	<b>\$167,487</b>	<b>64%</b>	<b>\$4,000</b>	<b>\$2,800</b>	<b>\$1,200</b>	<b>1%</b>

"26QYubaElem10"

[1] Revised per this Upper Yuba 25th Quarterly Work Plan.

[2] Reflects estimated expenses through the 23rd Quarter based on prior actual expenses through June 30, 2015 (23rd QPR) and estimated of expenses from June to September 2015 based on the 24th Quarterly Work Plan with any necessary adjustments for actual expenses incurred or changes in schedule.

**6. Schedule Information by Project Element:** Shown in the figure below is an updated Exhibit A (overall project schedule). This is the same schedule that was shown in 21<sup>st</sup> Quarterly Work Plan



**Blue:** Original **Pattern:** Not Viable **Yellow:** Prior Quarter Adjustments and Amendments **Green:** Changes Proposed in the 25<sup>th</sup> QWP

- **A discussion on how the projected schedule compares to original or last reported schedule:**

- None with this report; however, on October 27, 2015 (25<sup>th</sup> quarter) TRLIA requested DWR extend the UYLIP funding agreement to December 31, 2017 to allow the land transfer process and other work identified in this report to be completed.

## **7. Attachments:**

1. Updated Overall Work plan Tab D Project Element 9: WPIC 200-Yr Standard permit list
2. Updated Overall Work plan Tab D Project Element 10: ULE 86' Break Area 200-yr Standard permit list

**Attachment 1**  
**Tab D: WPIC 200-yr Standard (added by Amendment 3)**

PERMITTING AGENCY	PERMIT	PERMIT NEEDED (Y/N)	Status
Central Valley Flood Protection Board	Encroachment Permit	Yes	<ul style="list-style-type: none"> <li>Permit applications for the work have been submitted to the CVFPB and transmitted to USACE. CVFPB permits 19020 (cutoff walls) and 19020-1 (landside fill).</li> </ul>
U.S. Army Corps of Engineers (Corps)	Section 10 Permit	No	<ul style="list-style-type: none"> <li>Navigable waterways not affected</li> </ul>
Corps	Section 404 Permit	Yes	<ul style="list-style-type: none"> <li>19020-1 work will require a Section 404 permit. Application was submitted to USACE.</li> </ul>
Corps	Wetlands Delineation	Yes	<ul style="list-style-type: none"> <li>Wetland delineation has been completed.</li> </ul>
Corps	408 approval of project levee alteration	Yes	<ul style="list-style-type: none"> <li>Local approval is required for 19020-1. HQUSACE approval is required for 19020..</li> </ul>
Regional Water Quality Control Board (RWQCB); Central Valley Region (Region 5)	Section 401 Water Quality Certification	Yes	<ul style="list-style-type: none"> <li>The 404 Permit will require Water Quality Certification</li> </ul>
RWQCB, Region 5	National Pollution Discharge Elimination System (NPDES) Permit per Section 402 of the Clean Water Act	Yes	<ul style="list-style-type: none"> <li>Notice of Intent (NOI) and Storm water Pollution prevention Plan (SWPPP) will be submitted</li> </ul>
Feather River Air Quality Management District (FRAQMD)	Authority to Construct	Yes	<ul style="list-style-type: none"> <li>Contractor will submit required documentation prior to construction.</li> </ul>
U.S. Fish and Wildlife Service	Endangered Species Act Compliance (Biological Opinion)	Yes	<ul style="list-style-type: none"> <li>Formal consultation with USFWS is complete</li> </ul>
National Marine Fisheries Service (NMFS)	Endangered Species Act Compliance	No	<ul style="list-style-type: none"> <li>The project will avoid take of listed fish species</li> </ul>
California Department of Fish and Wildlife (DFW)	California Endangered Species Act Compliance (2081)	Yes	<ul style="list-style-type: none"> <li>Consultation under Section 2081 is complete; permit cannot be issued until CEEQA certification.</li> </ul>
DFW	Streambed Alteration Agreement	Yes	<ul style="list-style-type: none"> <li>Draft SSA has been prepared; completion requires CEEQA certification.</li> </ul>
California State Lands	Encroachment Permit	No	<ul style="list-style-type: none"> <li>All ground disturbances are above the WPIC ordinary high water mark and</li> </ul>



Commission (SLC)			outside SLC jurisdiction.
California Department of Forestry	Conversion of timberland to other uses.	No	<ul style="list-style-type: none"> <li>No timberland conversion is required for the project.</li> </ul>
The Resources Agency	Cancellation of Williamson Act Contract	No	<ul style="list-style-type: none"> <li>No Williamson Act contract cancellations are required to implement the project.</li> </ul>
California Department of Transportation (Caltrans)	Encroachment on or across a State highway	Yes	<ul style="list-style-type: none"> <li>An application to Cal-Trans was submitted.</li> </ul>
Native American Heritage Commission (NAHC)	Evaluation of effects on Native American burials or artifacts	Yes	<ul style="list-style-type: none"> <li>Coordination with the NAHC is underway as part of Section 106 and CEQA.</li> </ul>
State Office of Historic Preservation (SHPO)	Evaluation of effects on historic and cultural resources	Yes	<ul style="list-style-type: none"> <li>Coordination with the is underway as part of Section 106.</li> </ul>
Reclamation District 784 (RD 784)	Encroachment Permit	Yes	<ul style="list-style-type: none"> <li>Coordination with RD 784 is underway.</li> </ul>
Yuba County	Grading Permit	Yes	<ul style="list-style-type: none"> <li>A grading permit from Yuba County will be obtained prior to construction</li> </ul>
State Mining and Geology Board (SMGB)	SMARA Permit	No	<ul style="list-style-type: none"> <li>Contractor will use existing commercial sources as needed</li> </ul>
CEQA	IS/MND	Yes	<ul style="list-style-type: none"> <li>A joint IS/MND was issued in June 2015. Certification is expected in early 2016.</li> </ul>
NEPA	EA/FONSI	Yes	<ul style="list-style-type: none"> <li>A draft EA was issued in June 2015.</li> </ul>
Section 221 Credit	Credit under Section 221, as amended	No	<ul style="list-style-type: none"> <li>The proposed work is not eligible for Section 221 credit as it is not being considered as part of an ongoing or authorized Federal project.</li> </ul>

**Attachment 2**

**TAB D: ULE 86' Break Area 200-yr Standard (added by Amendment 3)**

<b>PERMITTING AGENCY</b>	<b>PERMIT</b>	<b>PERMIT NEEDED (Y/N)</b>	<b>Status</b>
Central Valley Flood Protection Board	Encroachment Permit	Yes	<ul style="list-style-type: none"> <li>An encroachment permit was issued by the CVFPB on April 30, 2015</li> </ul>
U.S. Army Corps of Engineers (Corps)	Section 10 Permit	No	<ul style="list-style-type: none"> <li>Navigable waterways not affected</li> </ul>
Corps	Section 404 Permit	No	<ul style="list-style-type: none"> <li>Waters of the United States will not be impacted</li> </ul>
Corps	Wetlands Delineation	No	<ul style="list-style-type: none"> <li>Waters of the United States will not be impacted</li> </ul>
Corps	408 approval of project levee alteration	Yes	<ul style="list-style-type: none"> <li>USACE approved altering the project as part of the Section 408 Process on April 20, 2015</li> </ul>
Regional Water Quality Control Board (RWQCB); Central Valley Region (Region 5)	Section 401 Water Quality Certification	No	<ul style="list-style-type: none"> <li>Waters of the United States will not be impacted</li> </ul>
RWQCB, Region 5	National Pollution Discharge Elimination System (NPDES) Permit per Section 402 of the Clean Water Act	Yes	<ul style="list-style-type: none"> <li>Notice of Intent (NOI) and Storm water Pollution prevention Plan (SWPPP) will be submitted</li> </ul>
Feather River Air Quality Management District (FRAQMD)	Authority to Construct	Yes	<ul style="list-style-type: none"> <li>Contractor will submit required documentation prior to construction.</li> </ul>
U.S. Fish and Wildlife Service	Endangered Species Act Compliance  (Biological Opinion)	No	<ul style="list-style-type: none"> <li>The project will avoid take of listed endangered species</li> </ul>
National Marine Fisheries Service (NMFS)	Endangered Species Act Compliance	No	<ul style="list-style-type: none"> <li>The project will avoid take of listed fish species</li> </ul>
California Department of Fish and Wildlife (DFW)	California Endangered Species Act Compliance  (2081)	No	<ul style="list-style-type: none"> <li>The project will avoid take of listed endangered species and will be constructed under a Categorical Exclusion</li> </ul>
DFW	Streambed Alteration	No	<ul style="list-style-type: none"> <li>All ground disturbances are above the Yuba River ordinary high water mark and no</li> </ul>

	Agreement		alterations to the streambed will occur.
California State Lands Commission (SLC)	Encroachment Permit	No	<ul style="list-style-type: none"> <li>All ground disturbances are above the Yuba River ordinary high water mark and outside SLC jurisdiction.</li> </ul>
California Department of Forestry	Conversion of timberland to other uses.	No	<ul style="list-style-type: none"> <li>No timberland conversion is required for the project.</li> </ul>
The Resources Agency	Cancellation of Williamson Act Contract	No	<ul style="list-style-type: none"> <li>No Williamson Act contract cancellations are required to implement the project.</li> </ul>
California Department of Transportation (Caltrans)	Encroachment on or across a State highway	No	<ul style="list-style-type: none"> <li>Project facilities do not encroach onto a State highway. However, construction equipment will likely use State Route 70 (SR 70).</li> </ul>
Native American Heritage Commission (NAHC)	Evaluation of effects on Native American burials or artifacts	No	<ul style="list-style-type: none"> <li>The project will be constructed under a Categorical Exclusion</li> </ul>
State Office of Historic Preservation (SHPO)	Evaluation of effects on historic and cultural resources	No	<ul style="list-style-type: none"> <li>The project will be constructed under a Categorical Exclusion</li> </ul>
Reclamation District 784 (RD 784)	Encroachment Permit	Yes	<ul style="list-style-type: none"> <li>Coordination with RD 784 will occur during design and construction of the project. The RD 784 Board of Directors endorsed the encroachment permit application on August 5, 2014.</li> </ul>
Yuba County	Grading Permit	Yes	<ul style="list-style-type: none"> <li>A grading permit from Yuba County will be obtained prior to construction</li> </ul>
State Mining and Geology Board (SMGB)	SMARA Permit	No	<ul style="list-style-type: none"> <li>Contractor will use existing commercial sources as needed</li> </ul>
CEQA	IS/MND	No	<ul style="list-style-type: none"> <li>The project will be constructed under a Categorical Exclusion</li> </ul>
NEPA	EA/FONSI	Yes	<ul style="list-style-type: none"> <li>USACE prepared the NEPA documentation required for the Section 408 process</li> </ul>
Section 104 Credit	Future federal projects cost sharing	No	<ul style="list-style-type: none"> <li>No longer applicable per Assistant Secretary of the Army</li> </ul>
Section 103 Credit	Credit under Section 2003	No	<ul style="list-style-type: none"> <li>This work is not part of a USACE Feasibility Study; therefore, credit will not be sought</li> </ul>