



TRLIA
25th QUARTERLY
PROGRESS REPORT
FOR
UPPER YUBA RIVER LEVEE
IMPROVEMENT PROJECT

- 1. Quarterly Progress Report (QPR) for 25th Quarter: October 1 – December 31, 2015**
- 2. Date of Report: March 28, 2016**
- 3. Purpose of Quarterly Report:** This report summarizes the work completed in the 25th Quarter.
- 4. Specific Project Element Information:**
 - Major accomplishments this quarter (i.e. tasks completed, milestones met, meetings held or attended, press releases, etc.)
 - None
 - Significant Events, media releases, and media coverage during the Quarter: None
 - **Project Element Information:**
 - *During the 25th quarter TRLIA requested DWR to extend the UYLIP funding agreement to December 31, 2017 to allow the land transfer and WPIC construction work to be completed.*
 - Effective the 21st quarter the narrative text for completed Elements and Features has been deleted from the report. The deleted items will continue to be shown in the schedule and financial update portions of the report.
 - During the 19th quarter (September 24, 2014) the UYLIP funding agreement was amended for the 3rd time to include two new Elements. These include work associated with 200-Year compliance work associated with the Western Pacific Interceptor Canal and the Yuba (Linda) Levee 1986 Break Site. This amendment also extended the Agreement Date to June 30, 2016.

- At the request of DWR, restructuring of Project Elements and Features occurred during the preparation of the 4th Quarterly Work Plan (QWP) submitted on May 28, 2010. The following changes were made and a revised Overall Work Plan Budget was submitted with the 4th QWP that reflected the following changes.
 - A new Element 7: Right of Way Capital was added. This was previously Element 3: Feature 3.3. The purpose of this change was to separate Right of Way acquisition costs into a separate and distinct Element.
 - Element 2 Features 2.3, 2.4 and 2.5 (Preliminary Design, Preliminary Permitting and Preliminary Right of Way Support) have been moved to Element 3. The purpose of this change was to remove all features that were able to be funded at the full 70% cost share from Element 2 so that as a whole, all costs in Element 2 are funded at 50% and all costs in Element 3 are funded at 70% by the State.

All subsequent discussion in this QPR is reflective of these modifications.

- **Engineering and Construction matters:**

- **Project Element 1A: Levee Landside Improvement – Station 5+80 to 9+00; added by the 9th Quarterly Work Plan.**

The U.S Army Corps of Engineers (USACE) performed a detailed inspection of the Reclamation District (RD) 784 Levee System in November-December 2010, which identified a significant issue along the landside of the Yuba River levee on the other side of levee where Project Element 1 work was performed. This issue was corrected in 2012 by removing landside encroachments and flattening the landside slope.

- Feature 3 Right of Way Support: TRLIA continued to work on this feature during the 25th Quarter. See Element 7 below for property acquisition information.
 - Feature 6: O&M Manual: There are no longer separate O&M Manuals for each Element. At the request of the CVFPB and USACE, one combined O&M Manual has been prepared for the entire RD 784 levee system and is under review by the USACE. See Element 3, Feature 6 for an update on the USACE review of this combined O&M Manual.
- **Project Element 3: Levee Improvements (Slurry Wall and Waterside Slope Erosion Protection) Support Work**
 - Feature 2.5 Right of Way Support:

- Real Estate has initiated monthly meetings with DWR to discuss outstanding issues including the status of the Final Accounting Packages and the cadastral review. A meeting was held on October 22, 2015. Meetings in November and December were cancelled due to the holidays and will resume in January, 2016.
 - Real Estate and Legal staff worked on the property acquisitions and Final Accounting Packages (FAP's) listed in Element 7 of this report during the 25th quarter.
- Feature 3 Right of Way Capital: This feature was moved to Project Element 7 as requested by DWR. See May 28, 2010 4th Quarterly Work Plan.
- Feature 4 Construction Management: Limited activity occurred during this quarter to address items required by settlement of eminent domain settlements (e.g. PG&E underground line placement for Dan Luis settlement). PG&E has been requested to schedule the final relocation of the waterside power line to 15 feet from the levee toe. A portion of this relocation will be underground. This work will be done by PG&E under CVFPB Permit 18695 that was approved on January 26, 2012. TRLIA and PG&E met in January 2014 to discuss scheduling of this work. PG&E will not do the work until all utility easements had been assigned to them. TRLIA cannot issue easements to PG&E until final title on the acquired Luis parcel is recorded and filed. The lot line adjustment issue has been resolved. TRLIA received all court documents and made all payments on the Luis acquisition in the 22nd Quarter. Title was filed in the 24th Quarter. At the end of the 25th Quarter easements remain to be issued to PG&E. After easements are assigned to PG&E, TRLIA will engage PG&E engineering to accomplish final relocation of the line.
- Feature 5 Environmental Mitigation:
 - Elderberry Mitigation - Use of Anderson Mitigation Site: The additional elderberry seedling plantings were planted in the 14th quarter and plant maintenance was performed in the 25th quarter to ensure their establishment. Maintenance for the additional seedlings will continue until April 2016. Monitoring will continue until 2018.
- Feature 6 O&M Manual Addendum:

An existing O&M Addendum for the Yuba South Levee was revised to add the work accomplished for the UYLIP. This revised manual was reviewed and discussed with RD 784. The revised Addendum was submitted to CVFPB and DWR EIP on February 14, 2013. CVFPB commented that USACE Section 408 requirement for the UYLIP required that all O&M Addendums prepared by TRLIA for the recent RD 784 levee system improvements be combined into one comprehensive addendum for the RD 784 levee system. CVFPB supports

the USACE requirement and asked for the combination also. A draft Combined Addendum was submitted to the CVFPB on January 8, 2014. USACE has completed its review of the combined Addendum. USACE has concerns with elements that they do not consider to be part of the Federal Project being in a federal version of a combined manual. USACE is preparing their draft version of what the combined addendum should be and will submit that to CVFPB as the manual to follow for maintenance of the Federal Project. The draft combined O&M Addendum submitted to USACE included O&M for areas for which TRLIA has committed to provide O&M. These portions of the draft Manual will need to be captured, presented in a separate supplement to the federal version of the combined O&M Manual, and followed in order to meet past commitments. RD 784 continues maintenance for the levee system following the directions contained in the Combined RD 784 O&M Manual. USACE provided TRLIA a draft version of their revised combined manual in the 25th Quarter. TRLIA is reviewing this draft.

- **Project Element 6:** Project Management, legal support, community relations support, land management support, and overhead
 - Activity occurred in all Features during this quarter except Travel and Memberships.

- **Element 7:** Right of Way Capital
 - Feature 7-3.3 Right of Way:
 - DWR approved the Upper Yuba River Real Estate Plan on June 28, 2010.
 - In the 24th quarter (August 14, 2015) TRLIA submitted an amended Real Estate Plan to update information on the UYLIP, including the identification of previously unknown parcels. The UYLIP acquisitions are listed in the first section of the updated plan. The WPIC Real Estate Plan was included in this amendment in Section 2 of the amended plan. During the 25th quarter, TRLIA responded to DWR questions regarding the amended plan. The Real Estate Plan Amendment was still pending at DWR at the end of the quarter.
 - Western Aggregates: During the 25th quarter TRLIA continued to be in negotiations with Western Aggregates to acquire fee title to portions of the levee and O&M corridors owned by Western Aggregates. TRLIA offered to grant back railroad easements over the land that TRLIA seeks to acquire from Western Aggregates in fee, and to leave already existing railroad easements owned by Western Aggregates in place, because Western Aggregates has stated that it hopes to use its fee and easement interests along the levee to eventually build a railroad spur for the transportation of aggregate from the Goldfields. DWR has agreed to allow the existing

easements owned by Western Aggregates to remain in place, and also agreed to allow TRLIA to grant new railroad easements to Western Aggregates over property that TRLIA acquires from Western Aggregates in fee.

In exchange for transferring fee title to the properties that TRLIA seeks to acquire in fee, Western Aggregates has requested TRLIA grant Western Aggregates a new floating railway easement on not only the properties that TRLIA seeks to acquire from Western Aggregates, but also along other sections of the Upper Yuba Project levee and O&M corridors where Western Aggregates does not currently have any ownership interest. In the 16th quarter, TRLIA met with DWR officials about this request and DWR has indicated that the CVFPB is the lead agency on this item. During the 25th quarter TRLIA continued to negotiate with Western Aggregates on this item and has brought in the services of a mediator to help resolve the issues associated with this item.

This issue is listed in the Issue/Concerns portion of this report

- **Final Accounting Packages (FAPs) and Cadastral Requirements:**
Tables 1 to 6 provide the status of Real Estate Property actions and Final Accounting Packages (FAPs)

Table 1 – List of FAPS and Cadastral Approval Status

Number	CVFPB #	Parcels	Owner	DWR RE Approval Status	DWR Cadastral Approval Status
1	14050	020-080-009	Western Aggregates, Inc.		
2	14051	021-041-006	Clara Willis, Et al	approved	
3	14052	021-041-007	Bernard J. Perez	approved	
4	14053	021-041-010	Lothar S. Klug, Et Al	approved	
5	14054	021-041-009	ROSA MARTHA VALDEZ	approved	
6	14055	021-041-012, 021-042-014	Steve Gilbert, Et Al	approved	approved
7	14056	021-042-027	Humam El Sharif	approved	
8	14057	021-0500-001	Orest Wesely, Et Al	approved 12/30/15	
9	14058	018-220-048, -049	COF Quail Hollow Land 35F LLC	approved	
10	14059	018-210-014	Stephanie Morris	approved	
11	14060	018-210-029	Robert G. Wood	approved	

Number	CVFPB #	Parcels	Owner	DWR RE Approval Status	DWR Cadastral Approval Status
12	14061	018-220-007	Howard R. Miller	approved	
13	14062	018-200-001, 018-220-030	Ajit S. Bains	approved	
14	14063	018-200-005, -007, 018-210-035	Anthony J. Luis, Et Al		
15	14064	018-200-008	Danel J. Luis		
16	14065	018-190-002, 018-200-006	Richard G. Wilbur Trust	approved	
17	14066	018-140-040	Richard G. Wilbur Trust	approved	
18	14067	018-150-015, 018-190-001	Henry P. Smith Et Al	Approved 12/30/15	
19	14068	018-190-110	Walbinder S. Sohal Living Trust	approved	
20	14069	018-190-107, 018-190-108	Sohal Family Trust	approved 12/30/15	
21	14070	018-150-035, 018-190-104	Michele R. Baker		
22	14071	018-150-032	Shintaffer Farms, Inc.	approved	
23	14072	018-190-109	Bhajan S. Sohal, Et Al	approved	
24	14073	021-021-001	Dunning Properties, LP		
25	14074	Portion of 018-220-056	R.B. Satori, LP (Wilbur, Richard G.)		
26	14075	018-220-056	Western Aggregates, LLC		
27	14079	020-410-001	Allen, Jason G.		
28	14080	Portion of 018-150-032 and -035	Federal Fruit Exchange	approved	
29	14081	018-230-028	Orchard Growers	approved	
30	14085	018-140-041	Naumes, Inc.	approved	
31	14086	018-190-085	Rahul, Surjit S. & Parmjit	approved	
Total				20	1

Table 2 - Acquisition being negotiated:

CVFPB	OWNER	STATUS OF ACQUISITION	STATUS OF F.A.P. (target to be submitted to DWR)	SETTLEMENT AMOUNT / TOTAL CLAIMED	STATE SHARE OF SETTLEMENT	INVOICED TO DATE	COMMENTS
14050	Western Aggregates, LLC	Negotiation					TRLIA has offered to grant back railroad easement over properties it seeks to acquire in fee. Western responded that it wants additional railroad easements along other properties TRILIA has acquired. Parties are negotiating.
14063	Anthony J. & Zelma B. Luis	Settlement Reached				\$11,200	Waiting for Final Order of Condemnation
14064	Daniel J. Luis	Complete		\$46,477.00	\$32,533.90	\$5,670.00	Preparing FAP and Relocation FAP Amending final order due to cadastral error
14073	Dunning Properties, LLC	Negotiation					TRLIA has been advised Western Aggregates owns the Dunning Brothers property. Accordingly, this property has the same issues as the other Western Aggregate Properties
14074	R.B. Satori, LP (Richard G. Wilbur)	Negotiation					First Written Offer 3/7/13. TRILIA is updating the appraisal and will make a revised offer.
14075	Western Aggregates, LLC	Negotiation					See comment for CVFPB 14050

Table 3 - Negotiated Acquisitions – The following parcels have been acquired. Final Accounting Packages are being prepared.

CVFPB	OWNER	STATUS OF ACQUISITION	STATUS OF F.A.P. (target to be submitted to DWR)	SETTLEMENT AMOUNT / TOTAL CLAIMED	STATE SHARE OF SETTLEMENT	INVOICED TO DATE	COMMENTS
14070	Michele R. Barker	Complete				\$64,750	Settlement documents submitted to escrow/ waiting on 1099s
14079	Jason G. Allen	Complete		\$210,000.00	\$147,070.00	Not invoiced yet	Preparing FAP and Relocation FAP

Table 4 - Final Accounting Packages at DWR:

CVFPB	OWNER	STATUS OF ACQUISITION	STATUS OF F.A.P. (target to be submitted to DWR)	SETTLEMENT AMOUNT / TOTAL CLAIMED	STATE SHARE OF SETTLEMENT	INVOICED TO DATE	COMMENTS
None							

Table 5 - Final Accounting Packages Approved:

CVFPB	OWNER	STATUS OF ACQUISITION	STATUS OF F.A.P. (target to be submitted to DWR)	SETTLEMENT AMOUNT / TOTAL CLAIMED	STATE SHARE OF SETTLEMENT	INVOICED TO DATE	COMMENTS
14051	Ronnie C. Willis	Complete	approved	\$29,500.00	\$20,650.00	\$20,650.00	Approved 8/4/15
14052	Bernard J. Perez	Complete	approved	\$10,350.00	\$7,245.00	\$7,245.00	Approved 8/10/15
14053	Lothar S. & Brigitta M. Klug	Complete	approved	\$2,800.00	\$1,960.00	\$1,960.00	Approved 8/10/15
14054	Valdez	Complete	approved	\$5,200.00	\$3,640.00	\$1,820.00	Approved 8/4/15
14055	Steve and Denise Gilbert	Complete	approved	\$15,700.00	\$14,840.00	\$14,840.00	Approved 8/4/15
14055	Steve and Denise Gilbert	Complete	approved	\$5,500.00			Approved 8/4/15
14056	Humam El Sharif	Complete	approved	\$2,100.00	\$1,470.00	\$1,470.00	Approved 9/11/15
14057	Orest and Irene Wesely	Complete	approved	\$33,000.00	\$23,100.00	\$23,100.00	Approved 12/30/15
14058	COF Quail Hollow Land 148T	Complete	approved	\$34,750.00	\$24,325.00	\$24,325.00	Approved 9/11/15
14062	Ajit S. Bains & Maria Del Carmen	Complete	approved	\$48,700.00	\$34,090.00	\$15,050	Approved 9/11/15
14065	Richard G. Wilbur Trust	Complete	approved	\$48,270.00	\$33,789.00	\$16,100	Approved 9/11/15
14066	Richard G. Wilbur Trust	Complete	approved				Approved 9/11/15
14067	Henry P. Smith	Complete	approved	\$149,071.00	104,349.00	\$22,400.00	Approved 12/30/15
14059	Stephanie Morris	Complete	approved	\$7,900.00	\$5,530.00	\$4,060.00	Approved 8/10/15
14060	Robert Glenn Wood	Complete	approved	\$3,200.00	\$2,240.00	\$2,240.00	Approved 8/10/15
14061	Howard R Miller	Complete	approved	\$1,400.00	\$980.00	\$980.00	Approved 8/10/15

CVFPB	OWNER	STATUS OF ACQUISITION	STATUS OF F.A.P. (target to be submitted to DWR)	SETTLEMENT AMOUNT / TOTAL CLAIMED	STATE SHARE OF SETTLEMENT	INVOICED TO DATE	COMMENTS
14068	Walbinder S. Sohal Living Trust,	Complete	approved	\$598,500.00	\$418,950.00	\$418,950.00	Approved 9/11/15
14069	Awtar S. Sohal & Sukhvir K. Sohal, Co-Trustees	Complete	approved	\$41,500.00	\$29,050.00	\$21,787.50	Approved 12/30/15
14071	Shintaffer Farms, Inc.	Complete	approved	\$5,500.00	\$3,850.00	\$437.00	Approved 8/10/15
14072	Bhajan S. & Rajwant K. Sohal	Complete	approved	\$598,500.00	\$418,950.00	\$418,950.00	Approved 9/11/15
14080	Federal Fruit Distributors	Complete	approved	\$800.00	\$560.00	\$392.00	Approved 9/11/15
14081	Orchard Growers	Complete	approved	\$500.00	\$350.00		Approved 8/10/15
14085	Naumes, Inc.	Complete	approved	\$3,000.00	\$2,100.00	\$175.00	Approved 8/10/15
14086	Rahul, Surjit S. & Parmjit	Complete	approved	\$500.00	\$350.00	\$175.00	Approved 8/10/15

Table 6 - Status of Relocation Actions:

CVFPB #	Property Owner	Relocated Tenant	Status of Relocation	Amount of Relocation Benefits Paid	Comments
14064	Daniel J. Luis	Kimberly Fuller	Complete	\$42,550.47	
	Jason G. Allen	Bill and Marilyn Jensen	Complete	\$26,800.57	
	Jason G. Allen	Trevor Jensen and Sammantha Pettet	Complete	\$31,130.00	
	Jason G. Allen	Ed Widener	Complete	\$12,272.00	
	Jason G. Allen	Jack Fouse	Complete	\$0	No response from tenant, who moved from Park.
	Jason G. Allen	Les Begley	Complete	\$1,100.00	
	Jason G. Allen	Judy Cordova	Complete	\$13,672.66	
	Jason G. Allen	Sarah Fite	Complete	\$27,964.56	
	Jason G. Allen	David Haughton	Complete	\$2,402.78	
	Jason G. Allen	Jason G. Allen	Complete	\$24,754.99	

- **Land Transfer:** Land transfer discussions occurred in the 25th quarter. The completion of the land transfer by current funding agreement end date (June 30, 2016) is doubtful. On October 27, 2015 (25th quarter) TRLIA requested DWR extend the UYLIP funding agreement to December 31, 2017 to allow the land transfer process and other work identified in this report to be completed.

This issue is listed in the Issue/Concerns portion of this report

➤ **Project Element 8 Closeout Process (Element added by 14th QWP):**

- 8 Feature 1: Closeout Process
 - On November 15, 2013 TRLIA submitted its initial draft of Closeout Documentation for the UYRLIP project for DWR's review. As part of that submission, TRLIA requested a partial release of retention for the portion of the project that has been completed. DWR reviewed and provided comment on the request during the 25th and 26th Quarters. TRLIA has restated this request and provided a revised analysis and requested partial retention release in February 2016.

This item is listed in the Issues and Concerns portion of the report.

➤ **Project Element 9 WPIC 200-yr Standard:**

- Feature 1 Design: Design activities during the 25th quarter were limited, primarily related to reviewing and incorporation of 90% agency comments. Heavy coordination activities occurred with PG&E, UPRR, and Cal-Trans.
- Feature 2 Permitting: Activities related to regulatory permits were minimal with exception of coordination with USACE regarding wetlands. Significant consultation with the Native American tribes was conducted.
 - See Attachment 1 for permits listing
- Feature 3 Right of Way Acquisition: Real Estate activities continued in the WPIC area during the 24th quarter. After discussions and field meetings with several of the property owners, engineering revisions were made and the appraisals were updated to reflect the changes. New offers were made in December. Additionally, several new TCEs were identified and appraisals were initiated. Negotiations are expected to continue into the next quarter.
- The current EIP funding agreement ends on June 30, 2016. It is unlikely that TRLIA will be able to complete the land transfer process to DWR by that time and that the funding agreement will need to be extended.

This item is listed in the Issues and Concerns portion of the report.

Table 7 – List of FAPS and Cadastral Approval Status

Number	CVFPB #	OWNER	Number of Parcels	DWR RE Approval Status	DWR Cadastral Approval Status
1		Miller-Belza-Peck	1		
2		Rue & Forsman Real Estate LLC	1		
3		Latigo Farms LLC (Includes Uneconomic Remnant)	2		
4		Alfaro Family Trust (Includes Uneconomic Remnant)	5		
			9	0	0

o Feature 4 Right of Way Support:

- During the 20th quarter, October 2, 2014, TRLIA submitted an amendment to UYLIP Real Estate plan for work on the WPIC.

On August 14, 2015 the UYLIP Real Estate Plan was amended to update information on the UYLIP, including the identification of previously unknown parcels. The UYLIP acquisitions are listed in the first section of the updated plan. The WPIC Real Estate Plan was included in this amendment in Section 2 of the amended plan. At the end of the quarter, the plan was still under review at DWR.

- Appraisals and Offers continued to be made during this quarter.

Table 8 – Property Acquisition Status

CVFPB	APN	OWNER	ESA Completed	Receipt of Legals and Plats (or revision)	Appraisal submitted to TRLIA	Appraisal submitted to DWR	Appraisal Approved by DWR	Just Compensation Approved	Offer Made	Comments
14090	014-270-084 014-270-105 014-270-106 014-350-065 014-360-002	Alfaro Family Trust	12/29/2014	1/28/2015	1/23/2015	1/23/2015		1/23/2015		Revised offer was made; negotiations continue
14089	014-360-011 014-360-013	Latigo Farms, LLC	12/29/2014		8/31/2012				4/8/2013 9/25/2013	Suit filed; Property owners have stipulated to possession
14088	016-050-023	Rue & Forsman Real Estate, LLC	12/24/2014	1/28/2015						Revised offer was made; negotiations continue

14087	016-070-018	Miller-Belza-Peck	12/24/2014	1/28/2015	9/12/2014	10/21/2014		10/3/2014	10/15/2014	Revised offer was made; negotiations continue
-------	-------------	-------------------	------------	-----------	-----------	------------	--	-----------	------------	---

- Prior to the UYLIP 3rd funding amendment being approved, TRLIA filed an eminent domain action against Latigo Farms LLC to acquire property rights needed for this element. TRLIA worked on this case during the 24th quarter. The trial in this action is scheduled to begin June 28, 2016. The deadline for the parties to exchange valuation data is March 30, 2016.
- Several discussions were held with UPRR regarding access along the corridor. An on-site meeting occurred on February 18, 2015 with UPRR representatives and project engineers to review the area and construction plans. At this meeting the UPRR maintenance manager for this stretch of railroad stated that he had no issues with RD 784 accessing the railroad ROW to perform vegetation maintenance at the landside toe of the railroad embankment. RD 784 personnel should not work along the track at the top of the embankment. The UPRR continues to review the design for work that will occur along their active track. Continuing coordination with the UPRR local track manager has not been able to obtain any comments from UPRR regarding the construction work (Reach 1B) scheduled next to their active track.

- Feature 5 Construction Management: No work was done during the 25th quarter
- Feature 6 Construction: No work was done during the 25th quarter
- Feature 7 Updated O&M Manual: No work was done during the 25th quarter

➤ **Project Element 10 Yuba 1986 Break Site Remediation**

- On September 24, 2014 the UYLIP funding agreement was amended for the 3rd time to include this Element.
- Feature 1 Permitting: **Completed**
 - See Attachment 2 for permits listing
- Feature 3 Design: **Completed.**
- Feature 4 Construction: **Completed**
- Feature 5 Construction Management: Winter surveillance and final inspections occurred in the 25th Quarter. Work on the construction completion report was done in the 25th Quarter.

- **Environmental matters**
 - **Project Element 3:** See Project Element 3 Feature 5 Environmental Mitigation above for this information.
 - See Project Element 9 Feature 2 Permitting for this information for Project Element 9.
- **Status of permits, easements, rights-of-way, and approvals as may be required by other State, federal, and/or local agencies:**
 - **Element 9:** See attachment 1 for list
 - **Element 10:** See Attachment 2 for list
- **Issues/concerns that have, will, or could affect the schedule or budget, with a recommendation on how to correct the matter:**
 - **Issue 1:** Western Aggregates has requested TRLIA to convert their current railway easement into a floating railway easement on the properties that TRLIA seeks to acquire from Western Aggregates, but also along other sections of the Upper Yuba Project levee and O&M corridors where Western Aggregates does not currently have any ownership interest. In the 16th quarter, TRLIA met with DWR officials about this request and DWR has indicated that the CVFPB is the lead agency on this item. During the 25th quarter TRLIA continued to negotiate with Western Aggregates on this item. TRLIA has brought on a mediator to help resolve the issues associated with this item.

Recommended Solution: DWR support TRLIA as negotiations with the CVFPB transpire for the approval of the Western Aggregate floating easement request.
 - **Issue 2:** On November 15, 2013 TRLIA submitted its initial draft of Closeout Documentation for the UYRLIP project for DWR's review. On February 16, 2016 TRLIA provided DWR an update to original request, which identified \$866,932 to be released. This request is only for expenses through 2013 and does not include the additional retention money that has been retained by DWR since that date. TRLIA's goal is to have the November 2013 release of retention approved and sent to TRLIA as soon as possible. DWR's delay in responding to this request is critically impacting TRLIA's cash flow for other flood control projects.

Recommended Solution: DWR make the requested partial retention payment to TRLIA.

- **Issue 3:** On October 27, 2015 TRLIA submitted a funding agreement request asking for the agreement to be extended to December 31, 2017

Recommend Solution: DWR amend funding agreement to support the WPIC real property acquisition and construction.

- **Describe differences between the work to be performed and the work outlined in the Overall Work Plan, including anticipated change orders:**

- No differences are expected as part of this Quarterly Report.

- **Demonstrate financial ability to pay local cost share of Eligible Project Costs required to complete the Project:**

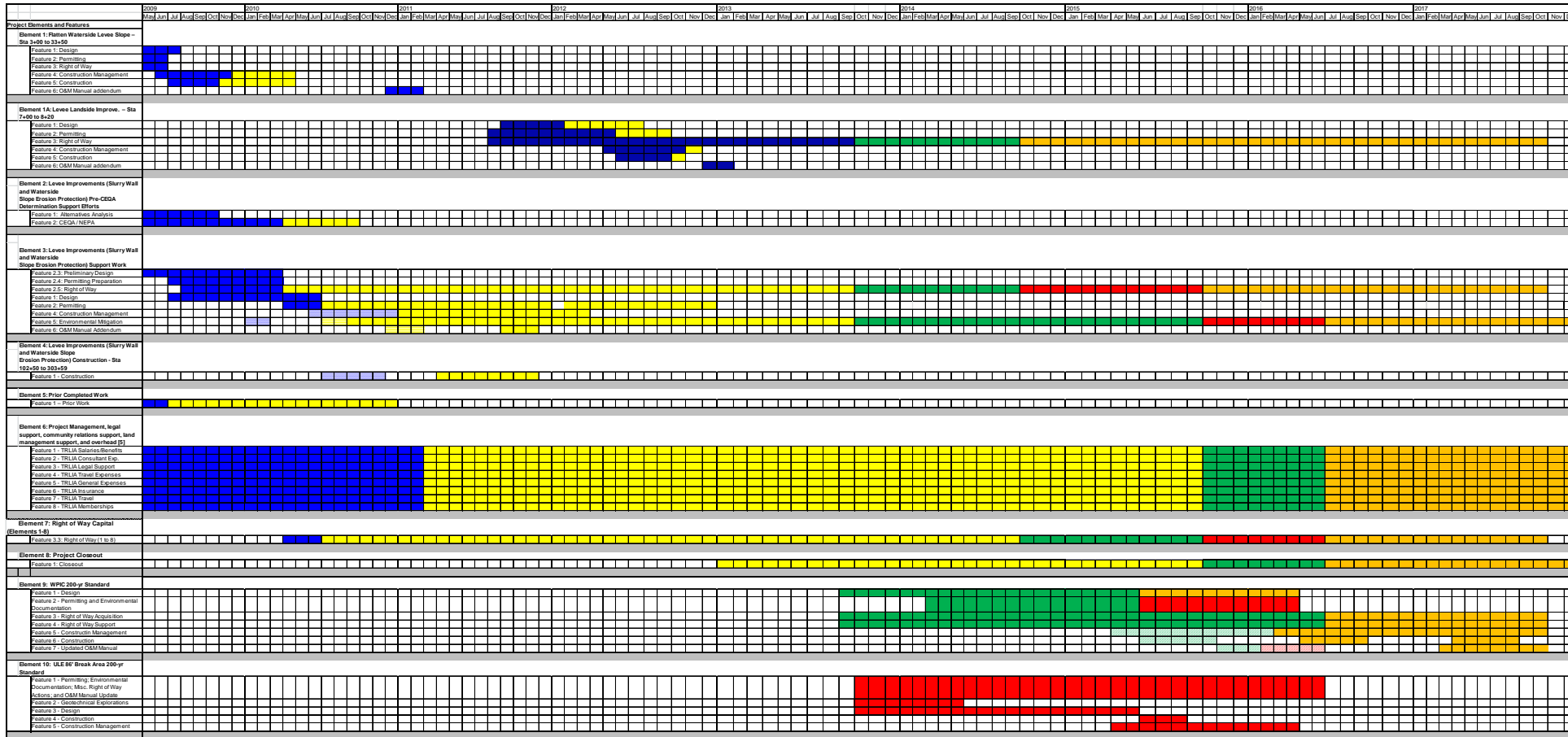
- Local funding for the remaining costs of the project is to come from three sources (listed in order of priority of use by TRLIA):
 - Credits accrued from State funding of prior completed work (Element 5 Work as well as other costs incurred prior to the funding agreement execution).
 - State Funding of Segment 1 of the Feather River EIP Project.
 - Local funding from the proceeds of bond sales completed by the Yuba Levee Finance Authority.

The Local Share of the Project based upon the revised overall work plan budget submitted as part of the 25th Quarterly Work Plan is approximately \$17.56 million. Within this budget, Element 5 work has already been completed and the local share of this work had been previously paid for by TRLIA, (approximately \$2.3 million) therefore the local share of these costs can be deducted to determine the remaining local share of costs of the project, approximately \$15.25 million. A portion of this remaining local share had been completed prior to the date of funding agreement, approximately \$1.0 million. The local funding sources available to cover the remaining project costs are detailed as follows;

- As noted in #4 – Project Element 5 above, on July 19, 2010, DWR informed TRLIA that it had approved the majority of TRLIA’s credit request in the amount of \$6,619,616. To date, the State has funded all of the local approved Credit to cover local share costs.
- DWR provided reimbursement for Segment 1 and Erosion Site 2 of TRLIA’s Feather River project and a payment of \$8,089,379 was received on June 29, 2010. These funds will be used to fund a portion of the local share of Upper Yuba River Costs.

- The above two items total \$14,708,995 of local funding received by TRLIA to date. This covers nearly all of local share of the costs of the project. As noted by TRLIA within its amended financial plan presented to support the inclusion of Element 9, TRLIA also has local funds available from the Yuba Levee Finance Authority to assist in cash flowing the project should the need arise. TRLIA noted that there is over \$7,000,000 of available funding for this work. This amount continues to be available of the date of this report.
- On November 19, 2013 TRLIA made a partial release of retention request to the State as part of its submission of final documentation for the project. TRLIA responding to inquiries from the State regarding this request and revised this request on February 16, 2016. This amount was for \$866,932. TRLIA will utilize this funding to assist with cash flowing the remainder of projected project expenses. **It should be noted that to the extent the State delays in responding to requests for release of retention, other work that TRLIA has underway could be impacted due to the cash flow constraints.**
- **Legal Matters:** No issues for all Project Elements
- **Cost Information by Project Element:** This information is provided in an attached Appendix I at end of this Quarterly Progress Report.

Shown in the figure below is the proposed Exhibit A in the requested 4th Amendment that was submitted on October 27, 2015



Blue: Original **Pattern:** Original, Not Viable **Yellow:** Amend 1 Change **Green:** Amend 2 Change **Red:** Amend 3 Change **Orange:** Amend 4 Change

- **A discussion on how the projected schedule compares to the original or last reported schedule:** The proposed schedule in Amendment 4 extends the agreement date to December 31, 2017.

6. Attachments

1. Tab D: Permit Status Update - WPIC 200-yr Standard (added by Amendment 3)
2. Tab D: Permit Status Update - ULE 86' Break Area 200-yr Standard (added by Amendment 3)

7. Appendices

Appendix I: TRLIA Upper Yuba River Levee Improvement Project 25th Quarterly Progress Report Budget Information, dated March 25, 2016.

Attachment 1

Tab D: WPIC 200-yr Standard (added by Amendment 3)

PERMITTING AGENCY	PERMIT	PERMIT NEEDED (Y/N)	Status
Central Valley Flood Protection Board	Encroachment Permit	Yes	<ul style="list-style-type: none"> Permit applications for the work have been submitted to the CVFPB and transmitted to USACE. CVFPB permits 19020 (cutoff walls) and 19020-1 (landside fill).
U.S. Army Corps of Engineers (Corps)	Section 10 Permit	No	<ul style="list-style-type: none"> Navigable waterways not affected
Corps	Section 404 Permit	Yes	<ul style="list-style-type: none"> 19020-1 work will require a Section 404 permit. Application was submitted to USACE.
Corps	Wetlands Delineation	Yes	<ul style="list-style-type: none"> Wetland delineation has been completed.
Corps	408 approval of project levee alteration	Yes	<ul style="list-style-type: none"> Local approval is required for 19020-1. HQUSACE approval is required for 19020..
Regional Water Quality Control Board (RWQCB); Central Valley Region (Region 5)	Section 401 Water Quality Certification	Yes	<ul style="list-style-type: none"> The 404 Permit will require Water Quality Certification
RWQCB, Region 5	National Pollution Discharge Elimination System (NPDES) Permit per Section 402 of the Clean Water Act	Yes	<ul style="list-style-type: none"> Notice of Intent (NOI) and Storm water Pollution prevention Plan (SWPPP) will be submitted
Feather River Air Quality Management District (FRAQMD)	Authority to Construct	Yes	<ul style="list-style-type: none"> Contractor will submit required documentation prior to construction.
U.S. Fish and Wildlife Service	Endangered Species Act Compliance (Biological Opinion)	Yes	<ul style="list-style-type: none"> Formal consultation with USFWS is complete
National Marine Fisheries Service (NMFS)	Endangered Species Act Compliance	No	<ul style="list-style-type: none"> The project will avoid take of listed fish species
California Department of Fish and Wildlife (DFW)	California Endangered Species Act Compliance (2081)	Yes	<ul style="list-style-type: none"> Consultation under Section 2081 is complete; permit cannot be issued until CEEQA certification.
DFW	Streambed Alteration Agreement	Yes	<ul style="list-style-type: none"> Draft SSA has been prepared; completion requires CEEQA certification.

California State Lands Commission (SLC)	Encroachment Permit	No	<ul style="list-style-type: none"> All ground disturbances are above the WPIC ordinary high water mark and outside SLC jurisdiction.
California Department of Forestry	Conversion of timberland to other uses.	No	<ul style="list-style-type: none"> No timberland conversion is required for the project.
The Resources Agency	Cancellation of Williamson Act Contract	No	<ul style="list-style-type: none"> No Williamson Act contract cancellations are required to implement the project.
California Department of Transportation (Caltrans)	Encroachment on or across a State highway	Yes	<ul style="list-style-type: none"> An application to CalTrans was submitted.
Native American Heritage Commission (NAHC)	Evaluation of effects on Native American burials or artifacts	Yes	<ul style="list-style-type: none"> Coordination with the NAHC is underway as part of Section 106 and CEQA.
State Office of Historic Preservation (SHPO)	Evaluation of effects on historic and cultural resources	Yes	<ul style="list-style-type: none"> Coordination with the SHPO is underway as part of Section 106.
Reclamation District 784 (RD 784)	Encroachment Permit	Yes	<ul style="list-style-type: none"> Coordination with RD 784 is underway.
Yuba County	Grading Permit	Yes	<ul style="list-style-type: none"> A grading permit from Yuba County will be obtained prior to construction
State Mining and Geology Board (SMGB)	SMARA Permit	No	<ul style="list-style-type: none"> Contractor will use existing commercial sources as needed
CEQA	IS/MND	Yes	<ul style="list-style-type: none"> A joint IS/MND was issued in June 2015. Certification is expected in early 2016.
NEPA	EA/FONSI	Yes	<ul style="list-style-type: none"> A draft EA was issued in June 2015.
Section 221 Credit	Credit under Section 221, as amended	No	<ul style="list-style-type: none"> The proposed work is not eligible for Section 221 credit as it is not being considered as part of an ongoing or authorized Federal project.

Attachment 2

TAB D: ULE 86' Break Area 200-yr Standard (added by Amendment 3)

PERMITTING AGENCY	PERMIT	PERMIT NEEDED (Y/N)	Status
Central Valley Flood Protection Board	Encroachment Permit	Yes	<ul style="list-style-type: none"> An encroachment permit was issued by the CVFPB on April 30, 2015
U.S. Army Corps of Engineers (Corps)	Section 10 Permit	No	<ul style="list-style-type: none"> Navigable waterways not affected
Corps	Section 404 Permit	No	<ul style="list-style-type: none"> Waters of the United States will not be impacted
Corps	Wetlands Delineation	No	<ul style="list-style-type: none"> Waters of the United States will not be impacted
Corps	408 approval of project levee alteration	Yes	<ul style="list-style-type: none"> USACE approved altering the project as part of the Section 408 Process on April 20, 2015
Regional Water Quality Control Board (RWQCB); Central Valley Region (Region 5)	Section 401 Water Quality Certification	No	<ul style="list-style-type: none"> Waters of the United States will not be impacted
RWQCB, Region 5	National Pollution Discharge Elimination System (NPDES) Permit per Section 402 of the Clean Water Act	Yes	<ul style="list-style-type: none"> Notice of Intent (NOI) and Storm water Pollution prevention Plan (SWPPP) will be submitted
Feather River Air Quality Management District (FRAQMD)	Authority to Construct	Yes	<ul style="list-style-type: none"> Contractor will submit required documentation prior to construction.
U.S. Fish and Wildlife Service	Endangered Species Act Compliance (Biological Opinion)	No	<ul style="list-style-type: none"> The project will avoid take of listed endangered species
National Marine Fisheries Service (NMFS)	Endangered Species Act Compliance	No	<ul style="list-style-type: none"> The project will avoid take of listed fish species
California Department of Fish and Wildlife (DFW)	California Endangered Species Act Compliance (2081)	No	<ul style="list-style-type: none"> The project will avoid take of listed endangered species and will be constructed under a Categorical Exclusion
DFW	Streambed Alteration Agreement	No	<ul style="list-style-type: none"> All ground disturbances are above the Yuba River ordinary high water mark and no alterations to the streambed will occur.

California State Lands Commission (SLC)	Encroachment Permit	No	<ul style="list-style-type: none"> All ground disturbances are above the Yuba River ordinary high water mark and outside SLC jurisdiction.
California Department of Forestry	Conversion of timberland to other uses.	No	<ul style="list-style-type: none"> No timberland conversion is required for the project.
The Resources Agency	Cancellation of Williamson Act Contract	No	<ul style="list-style-type: none"> No Williamson Act contract cancellations are required to implement the project.
California Department of Transportation (Caltrans)	Encroachment on or across a State highway	No	<ul style="list-style-type: none"> Project facilities do not encroach onto a State highway. However, construction equipment will likely use State Route 70 (SR 70).
Native American Heritage Commission (NAHC)	Evaluation of effects on Native American burials or artifacts	No	<ul style="list-style-type: none"> The project will be constructed under a Categorical Exclusion
State Office of Historic Preservation (SHPO)	Evaluation of effects on historic and cultural resources	No	<ul style="list-style-type: none"> The project will be constructed under a Categorical Exclusion
Reclamation District 784 (RD 784)	Encroachment Permit	Yes	<ul style="list-style-type: none"> Coordination with RD 784 will occur during design and construction of the project. The RD 784 Board of Directors endorsed the encroachment permit application on August 5, 2014.
Yuba County	Grading Permit	Yes	<ul style="list-style-type: none"> A grading permit from Yuba County will be obtained prior to construction
State Mining and Geology Board (SMGB)	SMARA Permit	No	<ul style="list-style-type: none"> Contractor will use existing commercial sources as needed
CEQA	IS/MND	No	<ul style="list-style-type: none"> The project will be constructed under a Categorical Exclusion
NEPA	EA/FONSI	Yes	<ul style="list-style-type: none"> USACE is preparing the NEPA documentation required for the Section 408 process
Section 104 Credit	Future federal projects cost sharing	No	<ul style="list-style-type: none"> No longer applicable per Assistant Secretary of the Army
Section 103 Credit	Credit under Section 2003	No	<ul style="list-style-type: none"> This work is not part of a USACE Feasibility Study; therefore, credit will not be sought

Appendix I

Appendix I: TRLIA Upper Yuba River Levee Improvement Project 25th Quarterly Progress Report Budget Information, dated March 25, 2016

Memorandum

TRLIA Upper Yuba River Levee Improvement Project

25th Quarterly Progress Report – Financial Document

March 25, 2016

Prepared for: Paul Brunner, TRLIA

Prepared by: Seth Wurzel

This memorandum has been prepared by Larsen Wurzel & Associates, Inc. (LWA) at the request of Three Rivers Levee Improvement Authority (TRLIA) to supplement the 25th Quarterly Progress Report (25th QPR) to the Department of Water Resources (DWR) for the Upper Yuba River Levee Improvement Project (Project). As indicated in TRLIA's 25th QPR, the cost and budget information is being provided within this memorandum to DWR as an attachment to the 25th QPR.

This memorandum includes two sets of tables that present the following analyses:

1. **Quarterly Work Plan Reconciliation** — A reconciliation of the 25th Quarterly Work Plan forecasted expenditures to the actual expenses incurred for the quarter's work and, the associated funding of the State Share received pursuant to Section 14.C of TRLIA's funding agreement with DWR (Funding Agreement).
2. **Cost and Funding Status through the 25th Quarter** — A summary of the cumulative costs incurred since November 6, 2006 through December 31, 2015¹ and a comparison of those costs incurred to the current Overall Work Plan Budget (based on the revisions by TRLIA as part of the 25th Quarter Work Plan and Funding Amendment No 4²) included as Exhibit A to the Funding Agreement.

1. Quarterly Work Plan Reconciliation

The following tables provide detailed information regarding the costs incurred for each Element and Feature during the 25th Quarter (October 1, 2015 through December 31, 2015) and compare these amounts to the forecasted expenditures for the Quarter presented within the 25th Quarterly Work Plan (QWP). The tables show the State Share of eligible expenses net of the required 10% withholding of the State Share and compares this amount to the funding received by TRLIA from the State through the 25th Quarter.

The following presents a summary of the conclusions drawn from the tables:

¹ Inclusive of the expenses incurred through December 31, 2015 and incurred by TRLIA through the month of January 2016. Reference the March 25, 2016 TRLIA Statement of Costs for the 25th Quarter (subject to review and approval by DWR).

² On October 11, 2015 TRLIA submitted a Revised Exhibit A that adjusted the Overall Work Plan Budget as part of the 25th Quarterly Work Plan. The revisions were also incorporated into a 4th amendment to the Agreement to include the 200-Year ULDC Compliance on the WPIC and extend the term of Agreement to 12/31/2017.

25th Quarter Reconciliation Summary (Elements 1 through 4, 6, 8 thru 10)

	Total	State Share
Total Non-Real Estate Expenses Incurred During 25th Quarter [1]	\$633,922	\$443,745
10% Required Retention		-\$44,375
State Share Net of Retention		\$399,371
plus State Share of Funding Owed for Prior Quarters		-\$898,466
State Share Due [2]		-\$499,096
Local Share to be Paid from Credit [3]		\$0
plus State Share of Funding Owed for Prior Quarter		-\$499,096
Local Credit Due		\$0
Total Funding Due as of Quarter		-\$499,096

[1] Estimated amount, subject to review and approval of Statement of Costs by DWR.

[2] Advance funding has not been received for the 25th Quarter, excess advance funding had been received through the 24th Quarter. Reference the cumulative State and Local Share of funding analysis on Page 17.

[3] No local credit remaining after 20th Quarter Advance

This information concludes that, for the 25th Quarter, the State has over-funded its share of expenses **net of the 10% hold-back provision** in the Funding Agreement. The State has advanced more funds through the 24th Quarter advance than TRLIA has spent, net of State’s 10% retention through the 25th quarter. Therefore, no additional funding is due for a true up. However, as of TRLIA has requested that the State release some of the retention funds it has held back on completed work pursuant to the provisions and policies related of partial retention release.

With respect to the Local Credit advanced, the State has funded the full amount of the credit available to TRLIA. This analysis reflects all funding received to date, the last funding received was in November 2015.

Prior funding of the state share had created an overfunding situation during prior quarters, as a result TRLIA accumulated interest on those Advance Funds. The following presents an analysis of the interest earned on State Share Advance Funding through the 25th Quarter for the Upper Yuba Project.

Interest Earned on State Advance Funds

Interest earned by TRLIA on State Advance funding before the funding is expended on eligible expenses will be used by TRLIA on the State’s share of eligible expenses. For the Upper Yuba Project, all funds advanced for the State Share of eligible expenses are deposited into a separate fund held by the Yuba County Treasurer. The Yuba County Treasurer apportions interest earned on all funds participating in the County pooled treasury on a quarterly basis. The following is a detailed statement of the interest earned and apportioned to the fund (Fund 817) that is dedicated for the State Share of eligible expenses for the Upper Yuba Project.

Allocable Interest for UYRLIP Funding by Quarter

Quarter of Transaction	Transaction Description	State Share Yuba River
Q4 - 09/10	3rd Quarter Interest Earned FY 09/10	\$ 348.32
Q1 - 10/11	4th Quarter Interest Earned FY 09/10	\$ 535.37
Q2 - 10/11	1st Quarter Intrerest Earned FY 10/11	\$ 21,704.87
Q3 - 10/11	2nd Quarter Intrerest Earned FY 10/11	\$ 21,995.55
Q4 - 10/11	3rd Qtr Interest Earned FY 10/11	\$ 20,375.65
Q1 - 11/12	4th Quarter Interest Earned FY 10/11	\$ 17,053.36
Q2 - 11/12	1st Qtr Interest Earned 10/1/11 FY 11/12	\$ 19,224.16
Q3 - 11/12	2nd Qtr Interest Earned 1/1/12 FY 11/12	\$ 5,033.57
Q4 - 11/12	3rd Qtr Interest Earned 4/1/12 Fy 11/12	\$ 174.43
Q1 - 12/13	4th Qtr Interest Earned 7/1/12 FY 11/12	\$ 299.15
Q2 - 12/13	1st Qtr Interest Earned 10/1/12 FY 12/13	\$ 13.91
Q3 - 12/13	2nd Qtr Interest Earned 1/1/13 FY 12/13	\$ 17.11
Q4 - 12/13	3rd Qtr Interest Earned 4/1/13 FY 12/13	\$ 12.73
Q1 - 13/14	4th Qtr Interest Earned 7/1/13 FY 12/13	\$ 10.94
Q2 - 13/14	1st Qtr Interest Earned 10/1/13 FY 13/14	\$ 54.05
Q3 - 13/14	2nd Qtr Interest Earned 1/1/14 FY 13/14	\$ 352.12
Q4 - 13/14	3rd Qtr Interest Earned 4/1/14 FY 13/14	\$ 54.00
Q1 - 14/15	4th Qtr Interest Earned 7/1/14 FY 13/14	\$ 137.79
Q2 - 14/15	1st Qtr Interest Earned 10/1/14 FY 14/15	\$ 469.59
Q3 - 14/15	2nd Qtr Interest Earned 1/1/15 FY 14/15	\$ 1,079.94
Q4 - 14/15	3rd Qtr Interest Earned 4/1/15 FY 14/15	\$ 516.13
Q1 - 15/16	4th Qtr Interest Earned 7/1/15 FY 14/15	\$ 672.77
Q2 - 15/16	1st Qtr Interest Earned 10/1/15 FY 15/16	\$ 689.86
Q3 - 15/16	2nd Qtr Interest Earned 1/1/16 FY 15/16	\$ 1,679.75
TOTAL		\$ 112,505.12

TRLIA has determined that the most efficient way to account for and provide the interest funding is to deduct this amount from future funding to be disbursed from to State to TRLIA. As shown above, the State has earned \$112,825.37 on the advance funding for the Upper Yuba Project through the 25th Quarter.

On April 11th, 2012, via e-mail, the State confirmed that it will handle this funding, by deducting the interest earned on State funding from a future construction funding payment (i.e. future advance, true-up or release of remaining retention). In addition, the State has also applied this concept to the FRLIP project by deduction funding from the release of retention.

Sale of Surplus Property – Sohal Borrow Site

TRLIA has disposed of surplus property acquired during the implementation of the UYRLIP Property. This property, the Sohal Borrow site, was disposed of February 2015. This property was acquired with a combination of State & Local funds. The State share of the net proceeds from property should be credited toward the State share of the project. 70% of the net amount of funds from the sale of surplus property is \$279,132.

TRLIA Quarterly Progress Report Budget Reconciliation

Upper Yuba (Real Estate)

For Period October/November/December 2015 (25th Qtr)

ELEMENT 7

Elements and Features	State Share %	25th QWP Forecast [1]	25th Quarter Expenses [2]			25th Quarter Expenses [2]		
			Total	State Share	Local Share	DWR Direct Pay	Local Credit Invoiced	Total
<i>Formula</i>	a	b	c	d=c*a	e=c-d	f	g	h = f+g
Element 7: Right of Way Capital								
7-3.3 - Right of Way Capital [3]	70.0000%	\$0	\$0	\$0	\$0	\$0	\$0	\$0
Subtotal Element 7		\$0	\$0	\$0	\$0	\$0	\$0	\$0
			Difference Between QWP & Actuals	\$0				

"Yub25QPRElem7"

[1] As reflected in the 25th QWP dated October 11, 2015.

[2] Reflects costs from October 1 to December 31, 2015 and paid through January 2016.

[3] All Real Estate capital has been advanced by TRLIA and will be invoiced through the Real Estate acquisition process.

Summary of TRLIA Quarterly Progress Report Budget Reconciliation

Upper Yuba

For Period October/November/December 2015 (25th Qtr)

SUMMARY ALL NON-REAL ESTATE ELEMENTS

Elements and Features	Total 25th QWP Quarter Work Plan	Total Expenses for 25th QWP Quarter	State Share			Local Share		
			To be Funded Net of 10% Holdback	State Funding Rec'd for 25th Quarter	State Funding Remaining to be Received for Quarter	Local Share of Actual Costs for Quarter	Local Funding Rec'd from Credit for Quarter	Remaining Local Share Funded by TRLIA
<i>Formula</i>	[1]	[2]	a	[3] b	c = a - b	d	e	f = e - d
<i>Non-Real Estate Eligible Elements</i>								
Element 1: Flatten Waterside Levee Slope	\$0	\$0	\$0	\$0	\$0	\$0	\$0	\$0
Element 1A: Land Side Improvement (Shadpad)	\$900	\$18,871	\$11,889	\$0	\$11,889	\$5,661	\$0	\$5,661
Element 2: Pre-CEQA Determination Support	\$0	\$0	\$0	\$0	\$0	\$0	\$0	\$0
Element 3: Levee Improvements Support Work	\$25,000	\$40,479	\$25,502	\$0	\$25,502	\$12,144	\$0	\$12,144
Element 4: Levee Improvements Construction	\$0	\$0	\$0	\$0	\$0	\$0	\$0	\$0
Element 6: Admin & Overhead	\$77,000	\$72,731	\$45,821	\$0	\$45,821	\$21,819	\$0	\$21,819
Element 8: Project Closeout Efforts	\$15,000	\$0	\$0	\$0	\$0	\$0	\$0	\$0
Element 9: WPIC 200-Yr Standard (net of ROW)	\$405,321	\$247,099	\$155,673	\$0	\$155,673	\$74,130	\$0	\$74,130
Element 10: Yuba ULDC Remediation 1986 Break Site	\$149,000	\$254,741	\$160,487	\$0	\$160,487	\$76,422	\$0	\$76,422
Subtotal Above Elements	\$672,221	\$633,922	\$399,371	\$0	\$399,371	\$190,177	\$0	\$190,177
Difference Between QWP & Actuals		<u>\$38,299</u>						

Element 5 Credit [Includes only Expenses Incurred Prior to October 20, 2009, not Shown Here]

Yub25QPRSumm

[1] As reflected in the 25th QWP dated October 11, 2015.

[2] Reflects costs from October 1 to December 31, 2015 and paid through January 2016.

[3] No 25th Quarter Advance was been provided. The last advance provided was for the 24th Quarter.

TRLIA Quarterly Progress Report Budget Reconciliation

Upper Yuba

For Period October/November/December 2015 (25th Qtr)

ELEMENT 1

Elements and Features	State Share %	25th QWP Forecast [1]	25th Quarter Expenses [2]			State Share
			Total	State Share	Local Share	To be Funded Net of 10% Holdback
<i>Formula</i>	a	b	c	d=c*a	e=c-d	f = d*90%
Element 1: Flatten Waterside Levee Slope – Sta 3+00 to 33+50						
1.1: Design	70.0000%	\$0	\$0	\$0	\$0	\$0
1.2: Permitting	70.0000%	\$0	\$0	\$0	\$0	\$0
1.3: Right of Way	70.0000%	\$0	\$0	\$0	\$0	\$0
1.4: Construction Management	70.0000%	\$0	\$0	\$0	\$0	\$0
1.5: Construction [1]	70.0000%	\$0	\$0	\$0	\$0	\$0
1.6: O&M Manual addendum	70.0000%	\$0	\$0	\$0	\$0	\$0
Subtotal Element 1		\$0	\$0	\$0	\$0	\$0
Difference Between QWP & Actuals			\$0			

"Yub25QPRElem1"

[1] As reflected in the 25th QWP dated October 11, 2015.

[2] Reflects costs from October 1 to December 31, 2015 and paid through January 2016.

TRLIA Quarterly Progress Report Budget Reconciliation

Upper Yuba

For Period October/November/December 2015 (25th Qtr)

ELEMENT 1A

Elements and Features	State Share %	25th QWP Forecast [1]	25th Quarter Expenses [2]			State Share
			Total	State Share	Local Share	To be Funded Net of 10% Holdback
<i>Formula</i>	a	b	c	d=c*a	e=c-d	f = d*90%
Element 1A: Land Side Levee Improvement						
- Sta 7+00 to 8+20 (Shadpad Road)						
1A.1: Design	70.0000%	\$0	\$0	\$0	\$0	\$0
1A.2: Permitting	70.0000%	\$0	\$0	\$0	\$0	\$0
1A.3: Right of Way	70.0000%	\$900	\$788	\$552	\$236	\$497
1A.4: Construction Management	70.0000%	\$0	\$18,083	\$12,658	\$5,425	\$11,392
1A.5: Construction	70.0000%	\$0	\$0	\$0	\$0	\$0
1A.6: O&M Manual addendum	70.0000%	\$0	\$0	\$0	\$0	\$0
Subtotal Element 1A		\$900	\$18,871	\$13,210	\$5,661	\$11,889
Difference Between QWP & Actuals			-\$17,971			

"Yub25QPRElem1A"

[1] As reflected in the 25th QWP dated October 11, 2015.

[2] Reflects costs from October 1 to December 31, 2015 and paid through January 2016.

TRLIA Quarterly Progress Report Budget Reconciliation

Upper Yuba

For Period October/November/December 2015 (25th Qtr)

ELEMENT 2

Elements and Features	State Share %	25th QWP Forecast	25th Quarter Expenses [2]			State Share
			Total	State Share	Local Share	To be Funded Net of 10% Holdback
<i>Formula</i>	[1]	[2]	c	d=c*a	e=c-d	f = d*90%
Element 2: Levee Improvements (Slurry Wall & Waterside Slope Erosion Protection) Pre-CEQA Determination Support Efforts						
2.1: Alternatives Analysis	50.0000%	\$0	\$0	\$0	\$0	\$0
2.2: CEQA / NEPA	50.0000%	\$0	\$0	\$0	\$0	\$0
Subtotal Element 2		\$0	\$0	\$0	\$0	\$0
Difference Between QWP & Actuals			\$0			

"Yub25QPRElem2"

[1] As reflected in the 25th QWP dated October 11, 2015.

[2] Reflects costs from October 1 to December 31, 2015 and paid through January 2016.

TRLIA Quarterly Progress Report Budget Reconciliation

Upper Yuba

For Period October/November/December 2015 (25th Qtr)

ELEMENT 3

Elements and Features	State Share %	25th QWP Forecast [1]	25th Quarter Expenses [2]			State Share
			Total	State Share	Local Share	To be Funded Net of 10% Holdback
<i>Formula</i>	a	b	c	d=c*a	e=c-d	f = d*90%
Element 3: Levee Improvements (Slurry Wall and Waterside Slope Erosion Protection) Support Work						
3-2.3: Preliminary Design	70.0000%	\$0	\$0	\$0	\$0	\$0
3-2.4: Permitting Preparation	70.0000%	\$0	\$0	\$0	\$0	\$0
3-2.5: Right of Way Support	70.0000%	\$25,000	\$37,315	\$26,120	\$11,194	\$23,508
3.1: Final Design	70.0000%	\$0	\$0	\$0	\$0	\$0
3.2: Permitting	70.0000%	\$0	\$2,102	\$1,471	\$631	\$1,324
3.4: Construction Management	70.0000%	\$0	\$0	\$0	\$0	\$0
3.5: Environmental Mitigation	70.0000%	\$0	\$1,063	\$744	\$319	\$670
3.6: O&M Manual addendum	70.0000%	\$0	\$0	\$0	\$0	\$0
Subtotal Element 3		\$25,000	\$40,479	\$28,336	\$12,144	\$25,502
			Difference Between QWP & Actuals	-\$15,479		

"Yub25QPRElem3"

[1] As reflected in the 25th QWP dated October 11, 2015.

[2] Reflects costs from October 1 to December 31, 2015 and paid through January 2016.

TRLIA Quarterly Progress Report Budget Reconciliation

Upper Yuba

For Period October/November/December 2015 (25th Qtr)

ELEMENT 4

Elements and Features	State Share %	25th QWP Forecast [1]	25th Quarter Expenses [2]			State Share
			Total	State Share	Local Share	To be Funded Net of 10% Holdback
<i>Formula</i>	a	b	c	d=c*a	e=c-d	f = d*90%
Element 4: Levee Improvements (Slurry Wall and Waterside Slope Erosion Protection) Construction - Sta 102+50 to 303+59						
4.1 - Construction	70.0000%	\$0	\$0	\$0	\$0	\$0
Subtotal Element 4		\$0	\$0	\$0	\$0	\$0
		Difference Between QWP & Actuals	\$0			

"Yub25QPRElem4"

[1] As reflected in the 25th QWP dated October 11, 2015.

[2] Reflects costs from October 1 to December 31, 2015 and paid through January 2016.

TRLIA Quarterly Progress Report Budget Reconciliation

Upper Yuba

For Period October/November/December 2015 (25th Qtr)

ELEMENT 5

Elements and Features	State Share %	25th QWP Forecast [1]	25th Quarter Expenses [2]			State Share
			Total	State Share	Local Share	To be Funded Net of 10% Holdback
<i>Formula</i>	a	b	c	d=c*a	e=c-d	f = d*90%
Element 5: Prior Completed Work						
5.1 - Prior Completed Work	70.0000%	\$0	\$0	\$0	\$0	\$0
Subtotal Element 5		\$0	\$0	\$0	\$0	\$0
Difference Between QWP & Actuals			\$0			

"Yub25QPRElem5"

[1] As reflected in the 25th QWP dated October 11, 2015.

[2] Reflects costs from October 1 to December 31, 2015 and paid through January 2016.

TRLIA Quarterly Progress Report Budget Reconciliation

Upper Yuba

For Period October/November/December 2015 (25th Qtr)

ELEMENT 6

Elements and Features	State Share %	25th QWP Forecast [1]	25th Quarter Expenses [2]			State Share
			Total	State Share	Local Share	To be Funded Net of 10% Holdback
<i>Formula</i>	a	b	c	d=c*a	e=c-d	f = d*90%
Element 6: Project Management, legal support, community relations support, land management support, and overhead						
6.1 - TRLIA Salaries/Benefits	70.0000%	\$61,000	\$63,701	\$44,591	\$19,110	\$40,132
6.2 - TRLIA Consultant Exp.	70.0000%	\$6,000	\$1,469	\$1,029	\$441	\$926
6.3 - TRLIA Legal Support	70.0000%	\$1,000	\$0	\$0	\$0	\$0
6.4 - TRLIA Travel Expenses	70.0000%	\$0	\$0	\$0	\$0	\$0
6.5 - TRLIA General Expenses	70.0000%	\$8,000	\$6,944	\$4,861	\$2,083	\$4,374
6.6 - TRLIA Insurance	70.0000%	\$0	\$113	\$79	\$34	\$71
6.7 - TRLIA Travel - Vehicle Lease	70.0000%	\$1,000	\$504	\$353	\$151	\$318
6.8 - TRLIA Memberships	70.0000%	\$0	\$0	\$0	\$0	\$0
Subtotal Element 6		\$77,000	\$72,731	\$50,912	\$21,819	\$45,821
Difference Between QWP & Actuals			\$4,269			

"Yub25QPRElem6"

[1] As reflected in the 25th QWP dated October 11, 2015.

[2] Reflects costs from October 1 to December 31, 2015 and paid through January 2016.

TRLIA Quarterly Progress Report Budget Reconciliation

Upper Yuba

For Period October/November/December 2015 (25th Qtr)

ELEMENT 8

Elements and Features	State Share %	25th QWP Forecast [1]	25th Quarter Expenses [2]			State Share
			Total	State Share	Local Share	To be Funded Net of 10% Holdback
<i>Formula</i>	a	b	c	d=c*a	e=c-d	f = d*90%
Element 8: Project Closeout Efforts						
8.1 - Project Close Out Efforts	70.0000%	\$15,000	\$0	\$0	\$0	\$0
Subtotal Element 8		\$15,000	\$0	\$0	\$0	\$0
Difference Between QWP & Actuals			\$15,000			

"Yub25QPRElem8"

[1] As reflected in the 25th QWP dated October 11, 2015.

[2] Reflects costs from October 1 to December 31, 2015 and paid through January 2016.

TRLIA Quarterly Progress Report Budget Reconciliation

Upper Yuba

For Period October/November/December 2015 (25th Qtr)

ELEMENT 9

Elements and Features	State Share %	25th QWP Forecast [1]	25th Quarter Expenses [2]			State Share
			Total	State Share	Local Share	To be Funded Net of 10% Holdback
<i>Formula</i>	a	b	c	d=c*a	e=c-d	f = d*90%
Element 9: WPIC 200-Yr Standard						
9.1 - Design	70.0000%	\$197,291	\$156,951	\$109,866	\$47,085	\$98,879
9.2 - Permitting & Environmental Documental	70.0000%	\$164,680	\$71,041	\$49,729	\$21,312	\$44,756
9.3 - Right of Way Acquisition	70.0000%	\$240,000	\$16,055	\$11,239	\$4,817	\$10,115
9.4 - Right of Way Support	70.0000%	\$43,350	\$0	\$0	\$0	\$0
9.5 - Construction Management	70.0000%	\$0	\$3,053	\$2,137	\$916	\$1,923
9.6 - Construction	70.0000%	\$0	\$0	\$0	\$0	\$0
9.7 - O&M Manual addendum	70.0000%	\$0	\$0	\$0	\$0	\$0
Subtotal Element 9		\$645,321	\$247,099	\$172,970	\$74,130	\$155,673
Difference Between QWP & Actuals			\$398,222			

"Yub25QPRElem9"

[1] As reflected in the 25th QWP dated October 11, 2015.

[2] Reflects costs from October 1 to December 31, 2015 and paid through January 2016.

TRLIA Quarterly Progress Report Budget Reconciliation

Upper Yuba

For Period October/November/December 2015 (25th Qtr)

ELEMENT 10

Elements and Features	State Share %	25th QWP Forecast [1]	25th Quarter Expenses [2]			State Share
			Total	State Share	Local Share	To be Funded Net of 10% Holdback
<i>Formula</i>	a	b	c	d=c*a	e=c-d	f = d*90%
Element 10: Yuba ULDC Remediation 1986 Break Site						
10.1 - Project Management	70.0000%	\$24,000	\$609	\$426	\$183	\$384
10.2 - Geotechnical Explorations	70.0000%	\$0	\$0	\$0	\$0	\$0
10.3 - Design	70.0000%	\$0	\$0	\$0	\$0	\$0
10.4 - Construction	70.0000%	\$100,000	\$252,122	\$176,485	\$75,637	\$158,837
10.5 - Construction Management	70.0000%	\$25,000	\$2,010	\$1,407	\$603	\$1,266
Subtotal Element 10		\$149,000	\$254,741	\$178,319	\$76,422	\$160,487
Difference Between QWP & Actuals			-\$105,741			

"Yub25QPRElem10"

[1] As reflected in the 25th QWP dated October 11, 2015.

[2] Reflects costs from October 1 to December 31, 2015 and paid through January 2016.

2. Cost and Funding Status through the 25th Quarter

The following set of tables present the status of the project on a cumulative expenditure basis as it relates to the current Overall Work Plan Budget (OAWP) (based on the revisions made by TRLIA submitted through the 25th QWP on October 11, 2015 and incorporated into Funding Amendment No. 4). This OAWP Budget is reflective of Elements 9 (which includes work for 200-Year ULDC compliance on the WPIC.) and Element 10 (which includes work for 200-Year ULDC compliance on the lower Yuba at 1986 Break Site).

In summary, through December 31, 2015, TRLIA has incurred expenses for the project which represent 67.7% of the total amended budget for Elements 1 through 10 (\$39,121,873). TRLIA has received a total of \$23,877,433 of State Funding to date (*this is reflective of the funding received in November 2015*), approximately 59.3% of the proposed current amended State Budget of \$40.260 million. TRLIA has received excess advance funding from the State.

Cumulative Funding Reconciliation - State Share

Total Non-Real Estate Expenses Incurred from October 20 to Date	\$25,547,218
State Share of above Expenses	\$17,749,690
Retention on State Share (10%)	-\$1,774,969
State Share Net of Retention	\$15,974,721
State Funding Received through 25th Quarter*	\$16,473,817
Funding Due (True-Up Due After 25th Quarter)	-\$499,096

* Reflects funding received through the 25th Quarter to date (true up payments through the 22nd Quarter and 24th Quarter Advance have been received).

Cumulative Funding Reconciliation - Local Credit

Total Non-Real Estate Expenses Incurred from October 20 to Date	\$25,547,218
Local Share of above Expenses	\$7,797,528
Local Credit Received	\$6,619,616
Local Credit Due [1]	\$0

* Reflects funding received through the 25th Quarter to date (true up payments through the 22nd Quarter and 24th Quarter Advance have been received).

[1] The Local remaining as of the date of this report is \$0. All credit has been funded.

There is one individual feature budget within the elements that have exceeded the revised total Overall Work Plan Budgets by greater than 5% excluding Element 5.

Element 5

With respect to Element 5, this Element has exceeded the original forecasted budget for Credit, however, the State is aware of this fact and this element only represents creditable expenses. On July 19, 2010 the State finalized the Credit amount for the Project ultimately approving \$6,619,616 of credit leaving an additional \$1,068,200 of potentially creditable expenses open pending further investigation. On June 30, 2011, TRLIA finalized this issue by sending notification to DWR that it had determined that these expenses were not eligible however, these costs are still reflected within these tables as project expenses funded solely from local sources.

Element 1A – Feature 1A.5 Construction

This element has exceeded the budget approximately 6%. This element is complete and no additional expenses are forecasted.

Element 3.5 – Environmental Mitigation

This element has exceeded the budget approximately 6%. Additional plant maintenance and monitoring will continue until 2018. The expenses will be minimal. TRLIA will continue to monitor the budget for the overall Element 3. The overall budget for the element is not expected to be exceeded.

Summary of TRLIA Progress Report Overall Funding Status

Upper Yuba

For Period October/November/December 2015 (25th Qtr)

SUMMARY ALL ELEMENTS

Elements and Features	Overall Budget [1]			Actual Expenses to Date [2]			Remaining Budget			Percentage of Total Budget Expended
	Total	State	Local	Total	State Share	Local Share	Total	State Share	Local Share	
<i>Formula</i>	a	b	c = a - b	d	e	f = d - e	g = a - d	h = b - e	i = c - f	j = d/a
Quarterly Progress Report Reconciliation										
Element 1: Flatten Waterside Levee Slope	\$782,007	\$547,405	\$234,602	\$728,160	\$509,712	\$218,448	\$53,847	\$37,693	\$16,154	93.1%
Element 1A: Land Side Improvement (Shadpa	\$1,060,000	\$742,000	\$318,000	\$1,055,700	\$738,990	\$316,710	\$4,300	\$3,010	\$1,290	99.6%
Element 2: Pre-CEQA Determination Support	\$1,069,913	\$534,956	\$534,956	\$1,065,054	\$532,527	\$532,527	\$4,859	\$2,430	\$2,430	99.5%
Element 3: Support Work	\$10,301,168	\$7,210,817	\$3,090,350	\$9,478,195	\$6,634,736	\$2,843,458	\$822,973	\$576,081	\$246,892	92.0%
Element 4: Construction	\$9,800,000	\$6,860,000	\$2,940,000	\$8,698,919	\$6,089,243	\$2,609,676	\$1,101,081	\$770,757	\$330,324	88.8%
Element 5: Prior Completed Work	\$7,682,162	\$5,377,514	\$2,304,649	\$9,760,791	\$6,832,554	\$2,928,237	-\$2,078,629	-\$1,455,040	-\$623,589	127.1%
Element 6: Admin & Overhead	\$4,901,913	\$3,431,339	\$1,470,574	\$3,902,109	\$2,731,476	\$1,170,633	\$999,804	\$699,863	\$299,941	79.6%
Element 7: Real Estate Capital	\$5,373,838	\$3,761,687	\$1,612,151	\$2,713,260	\$1,899,282	\$813,978	\$2,660,578	\$1,862,404	\$798,173	50.5%
Element 8: Project Closeout Efforts	\$200,000	\$140,000	\$60,000	\$7,872	\$5,511	\$2,362	\$192,128	\$134,489	\$57,638	3.9%
Element 9: WPIC 200-Year Standard	\$15,780,000	\$11,046,000	\$4,734,000	\$1,928,284	\$1,349,799	\$578,485	\$13,851,716	\$9,696,201	\$4,155,515	12.2%
Element 10: Yuba 1986 Break Site Remediatc	\$870,000	\$609,000	\$261,000	\$417,451	\$292,216	\$125,235	\$452,549	\$316,784	\$135,765	48.0%
Subtotal	\$57,821,000	\$40,260,718	\$17,560,283	\$39,755,795	\$27,616,046	\$12,139,749	\$18,065,205	\$12,644,672	\$5,420,533	68.8%
Subtotal Excluding Element 5	\$50,138,838	\$34,883,204	\$15,255,634	\$29,995,004	\$20,783,492	\$9,211,512	\$20,143,834	\$14,099,712	\$6,044,122	59.8%
Subtotal Excluding Elements 5 and 7 (ROW of Elem 9)	\$44,156,000	\$30,695,217	\$13,460,783	\$27,154,637	\$18,795,235	\$8,359,402	\$17,001,363	\$11,899,983	\$5,101,381	61.5%
State Funding Received Through 24th Quarter										
State Share of Real Estate Advances	\$784,000									
Construction Funding	\$16,473,816.94									
Credit Funding Received	\$6,619,616									
Total Funding Received	\$23,877,433									
Percentage of State Budget Funded	59.3% (Received Through November 2015)									

*Yub25QPRTotSumm"

[1] As reflected in the 25th QWP dated October 11, 2015.

[2] Includes expenses incurred through December 31, 2015 (and paid through January 2016)

TRLIA Progress Report Overall Funding Status

Upper Yuba

For Period October/November/December 2015 (25th Qtr)

ELEMENT 1

Elements and Features	State Share %	Overall Budget [1]			Actual Expenses to Date [2]			Remaining Budget			Percentage of Total Budget Expended
		Total	State	Local	Total	State Share	Local Share	Total	State Share	Local Share	
<i>Formula</i>	a	b	c	d = b-c	e	f = e*a	g = e-f	h=b-e	i=c-f	j=d-g	k = e/b
Element 1: Flatten Waterside Levee Slope – Sta 3+00 to 33+50											
1.1: Design	70.0000%	\$199,279	\$139,495	\$59,784	\$198,854	\$139,198	\$59,656	\$424	\$297	\$127	99.8%
1.2: Permitting	70.0000%	\$49,134	\$34,394	\$14,740	\$869	\$608	\$261	\$48,265	\$33,786	\$14,480	1.8%
1.3: Right of Way	70.0000%	\$24,285	\$16,999	\$7,285	\$23,731	\$16,612	\$7,119	\$553	\$387	\$166	97.7%
1.4: Construction Management	70.0000%	\$180,492	\$126,345	\$54,148	\$179,455	\$125,618	\$53,836	\$1,037	\$726	\$311	99.4%
1.5: Construction [1]	70.0000%	\$325,250	\$227,675	\$97,575	\$325,250	\$227,675	\$97,575	\$0	\$0	\$0	100.0%
1.6: O&M Manual addendum	70.0000%	\$3,567	\$2,497	\$1,070	\$0	\$0	\$0	\$3,567	\$2,497	\$1,070	0.0%
Subtotal Element 1		\$782,007	\$547,405	\$234,602	\$728,160	\$509,712	\$218,448	\$53,847	\$37,693	\$16,154	93.1%

"Yub25QPRTotElem1"

[1] As reflected in the 25th QWP dated October 11, 2015.

[2] Includes expenses incurred through December 31, 2015 (and paid through January 2016)

TRLIA Progress Report Overall Funding Status

Upper Yuba

For Period October/November/December 2015 (25th Qtr)

ELEMENT 1A

Elements and Features	State Share %	Overall Budget [1]			Actual Expenses to Date [2]			Remaining Budget			Percentage of Total Budget Expended
		Total	State	Local	Total	State Share	Local Share	Total	State Share	Local Share	
<i>Formula</i>	<i>a</i>	<i>b</i>	<i>c</i>	<i>d = b-c</i>	<i>e</i>	<i>f = e*a</i>	<i>g = e-f</i>	<i>h=b-e</i>	<i>i=c-f</i>	<i>j=d-g</i>	<i>k = e/b</i>
Element 1A: Land Side Levee Improvement											
- Sta 7+00 to 8+20 (Shadpad Road)											
1A.1: Design	70.0000%	\$80,000	\$56,000	\$24,000	\$78,792	\$55,155	\$23,638	\$1,208	\$845	\$362	98.5%
1A.2: Permitting	70.0000%	\$105,000	\$73,500	\$31,500	\$101,848	\$71,294	\$30,554	\$3,152	\$2,206	\$946	97.0%
1A.3: Right of Way	70.0000%	\$240,000	\$168,000	\$72,000	\$195,207	\$136,645	\$58,562	\$44,793	\$31,355	\$13,438	81.3%
1A.4: Construction Management	70.0000%	\$175,000	\$122,500	\$52,500	\$199,685	\$139,780	\$59,906	-\$24,685	-\$17,280	-\$7,406	114.1%
1A.5: Construction	70.0000%	\$455,000	\$318,500	\$136,500	\$480,168	\$336,117	\$144,050	-\$25,168	-\$17,617	-\$7,550	105.5%
1A.6: O&M Manual addendum	70.0000%	\$5,000	\$3,500	\$1,500	\$0	\$0	\$0	\$5,000	\$3,500	\$1,500	0.0%
Subtotal Element 1A		\$1,060,000	\$742,000	\$318,000	\$1,055,700	\$738,990	\$316,710	\$4,300	\$3,010	\$1,290	99.6%

"Yub25QPRTotElem1"

[1] As reflected in the 25th QWP dated October 11, 2015.

[2] Includes expenses incurred through December 31, 2015 (and paid through January 2016)

TRLIA Progress Report Overall Funding Status

Upper Yuba

For Period October/November/December 2015 (25th Qtr)

ELEMENT 2

Elements and Features	State Share %	Overall Budget [1]			Actual Expenses to Date [2]			Remaining Budget			Percentage of Total Budget Expended
		Total	State	Local	Total	State Share	Local Share	Total	State Share	Local Share	
<i>Formula</i>	a	b	c	d = b-c	e	f = e*a	g = e-f	h=b-e	i=c-f	j=d-g	k = e/b
Element 2: Levee Improvements (Slurry Wall & Waterside Slope Erosion Protection) Pre-CEQA Determination Support Efforts											
2.1: Alternatives Analysis	50.0000%	\$419,771	\$209,885	\$209,885	\$415,488	\$207,744	\$207,744	\$4,283	\$2,141	\$2,141	99.0%
2.2: CEQA / NEPA	50.0000%	\$650,142	\$325,071	\$325,071	\$649,566	\$324,783	\$324,783	\$576	\$288	\$288	99.9%
Subtotal Element 2		\$1,069,913	\$534,956	\$534,956	\$1,065,054	\$532,527	\$532,527	\$4,859	\$2,430	\$2,430	99.5%

"Yub25QPRTotElem2"

[1] As reflected in the 25th QWP dated October 11, 2015.

[2] Includes expenses incurred through December 31, 2015 (and paid through January 2016)

TRLIA Progress Report Overall Funding Status

Upper Yuba

For Period October/November/December 2015 (25th Qtr)

ELEMENT 3

Elements and Features	State Share %	Overall Budget [1]			Actual Expenses to Date [2]			Remaining Budget			Percentage of Total Budget Expended
		Total	State	Local	Total	State Share	Local Share	Total	State Share	Local Share	
<i>Formula</i>	<i>a</i>	<i>b</i>	<i>c</i>	<i>d = b-c</i>	<i>e</i>	<i>f = e*a</i>	<i>g = e-f</i>	<i>h=b-e</i>	<i>i=c-f</i>	<i>j=d-g</i>	<i>k = e/b</i>
Element 3: Levee Improvements (Slurry Wall and Waterside)											
3-2.3: Preliminary Design	70.0000%	\$1,378,778	\$965,145	\$413,633	\$1,368,300	\$957,810	\$410,490	\$10,478	\$7,335	\$3,144	99.2%
3-2.4: Permitting Preparation	70.0000%	\$225,344	\$157,741	\$67,603	\$33,937	\$23,756	\$10,181	\$191,407	\$133,985	\$57,422	15.1%
3-2.5: Right of Way Support	70.0000%	\$2,935,767	\$2,055,037	\$880,730	\$3,008,076	\$2,105,653	\$902,423	-\$72,309	-\$50,616	-\$21,693	102.5%
3.1: Final Design	70.0000%	\$2,279,307	\$1,595,515	\$683,792	\$2,236,475	\$1,565,532	\$670,942	\$42,833	\$29,983	\$12,850	98.1%
3.2: Permitting	70.0000%	\$702,461	\$491,723	\$210,738	\$166,792	\$116,754	\$50,038	\$535,669	\$374,968	\$160,701	23.7%
3.4: Construction Management	70.0000%	\$2,175,000	\$1,522,500	\$652,500	\$2,176,243	\$1,523,370	\$652,873	-\$1,243	-\$870	-\$373	100.1%
3.5: Environmental Mitigation	70.0000%	\$415,091	\$290,564	\$124,527	\$438,461	\$306,922	\$131,538	-\$23,370	-\$16,359	-\$7,011	105.6%
3.6: O&M Manual addendum	70.0000%	\$189,419	\$132,593	\$56,826	\$49,912	\$34,939	\$14,974	\$139,506	\$97,654	\$41,852	26.4%
Subtotal Element 3		\$10,301,168	\$7,210,817	\$3,090,350	\$9,478,195	\$6,634,736	\$2,843,458	\$822,973	\$576,081	\$246,892	92.0%

"Yub25QPRTotElem3"

[1] As reflected in the 25th QWP dated October 11, 2015.

[2] Includes expenses incurred through December 31, 2015 (and paid through January 2016)

TRLIA Progress Report Overall Funding Status

Upper Yuba

For Period October/November/December 2015 (25th Qtr)

ELEMENT 4

Elements and Features	State Share %	Overall Budget [1]			Actual Expenses to Date [2]			Remaining Budget			Percentage of Total Budget Expended
		Total	State	Local	Total	State Share	Local Share	Total	State Share	Local Share	
<i>Formula</i>	a	b	c	d = b-c	e	f = e*a	g = e-f	h=b-e	i=c-f	j=d-g	k = e/b
Element 4: Levee Improvements (Slurry Wall and Waterside Slope Erosion Protection) Construction - Sta 102+50 to											
4.1 - Construction	70.0000%	\$9,800,000	\$6,860,000	\$2,940,000	\$8,698,919	\$6,089,243	\$2,609,676	\$1,101,081	\$770,757	\$330,324	88.8%
Subtotal Element 4		\$9,800,000	\$6,860,000	\$2,940,000	\$8,698,919	\$6,089,243	\$2,609,676	\$1,101,081	\$770,757	\$330,324	88.8%

"Yub25QPRTotElem4"

[1] As reflected in the 25th QWP dated October 11, 2015.

[2] Includes expenses incurred through December 31, 2015 (and paid through January 2016)

TRLIA Progress Report Overall Funding Status

Upper Yuba

For Period October/November/December 2015 (25th Qtr)

ELEMENT 5

Elements and Features	State Share %	Overall Budget [1]			Actual Expenses to Date [2]			Remaining Budget			Percentage of Total Budget Expended
		Total	State	Local	Total	State Share	Local Share	Total	State Share	Local Share	
<i>Formula</i>	a	b	c	d = b-c	e	f = e*a	g = e-f	h=b-e	i=c-f	j=d-g	k = e/b
Element 5: Prior Completed Work											
5.1 - Prior Completed Work	70.0000%	\$7,682,162	\$5,377,514	\$2,304,649	\$9,760,791	\$6,832,554	\$2,928,237	-\$2,078,629	-\$1,455,040	-\$623,589	127.1%
Subtotal Element 6		\$7,682,162	\$5,377,514	\$2,304,649	\$9,760,791	\$6,832,554	\$2,928,237	-\$2,078,629	-\$1,455,040	-\$623,589	127.1%

"Yub25QPRTotElem5"

[1] As reflected in the 25th QWP dated October 11, 2015.

[2] Includes expenses incurred through December 31, 2015 (and paid through January 2016)

TRLIA Progress Report Overall Funding Status

Upper Yuba

For Period October/November/December 2015 (25th Qtr)

ELEMENT 5

Elements and Features	State Share %	Overall Budget [1]			Actual Expenses to Date [2]			Remaining Budget			Percentage of Total Budget Expended
		Total	State	Local	Total	State Share	Local Share	Total	State Share	Local Share	
<i>Formula</i>	a	b	c	d = b-c	e	f = e*a	g = e-f	h=b-e	i=c-f	j=d-g	k = e/b
Element 5: Prior Completed Work											
5.1 - Prior Completed Work	70.0000%	\$7,682,162	\$5,377,514	\$2,304,649	\$9,760,791	\$6,832,554	\$2,928,237	-\$2,078,629	-\$1,455,040	-\$623,589	127.1%
Subtotal Element 6		\$7,682,162	\$5,377,514	\$2,304,649	\$9,760,791	\$6,832,554	\$2,928,237	-\$2,078,629	-\$1,455,040	-\$623,589	127.1%

"Yub25QPRTotElem5"

[1] As reflected in the 25th QWP dated October 11, 2015.

[2] Includes expenses incurred through December 31, 2015 (and paid through January 2016)

TRLIA Progress Report Overall Funding Status

Upper Yuba

For Period October/November/December 2015 (25th Qtr)

ELEMENT 7

Elements and Features	State Share %	Overall Budget [1]			Actual Expenses to Date [2]			Remaining Budget			Percentage of Total Budget Expended
		Total	State	Local	Total	State Share	Local Share	Total	State Share	Local Share	
<i>Formula</i>	a	b	c	d = b-c	e	f = e*a	g = e-f	h=b-e	i=c-f	j=d-g	k = e/b
Element 7: Right of Way Capital											
7-3.3 - Right of Way Capital	70.0000%	\$5,373,838	\$3,761,687	\$1,612,151	\$2,713,260	\$1,899,282	\$813,978	\$2,660,578	\$1,862,404	\$798,173	50.5%
Subtotal Element 7		\$5,373,838	\$3,761,687	\$1,612,151	\$2,713,260	\$1,899,282	\$813,978	\$2,660,578	\$1,862,404	\$798,173	50.5%

"Yub25QPRTotElem7"

[1] As reflected in the 25th QWP dated October 11, 2015.

[2] Includes expenses incurred through December 31, 2015 (and paid through January 2016)

TRLIA Progress Report Overall Funding Status Upper Yuba

For Period October/November/December 2015 (25th Qtr)

ELEMENT 8

Elements and Features	State Share %	Overall Budget [1]			Actual Expenses to Date [2]			Remaining Budget			Percentage of Total Budget Expended
		Total	State	Local	Total	State Share	Local Share	Total	State Share	Local Share	
<i>Formula</i>	a	b	c	d = b-c	e	f = e*a	g = e-f	h=b-e	i=c-f	j=d-g	k = e/b
Element 8: Project Closeout Efforts											
8.1 - Project Close Out Efforts	70%	\$200,000	\$140,000	\$60,000	\$7,872	\$5,511	\$2,362	\$192,128	\$134,489	\$57,638	3.9%
Subtotal Element 8		\$200,000	\$140,000	\$60,000	\$7,872	\$5,511	\$2,362	\$192,128	\$134,489	\$57,638	3.9%

"Yub25QPRTotElem8"

[1] As reflected in the 25th QWP dated October 11, 2015.

[2] Includes expenses incurred through December 31, 2015 (and paid through January 2016)

TRLIA Progress Report Overall Funding Status

Upper Yuba

For Period October/November/December 2015 (25th Qtr)

ELEMENT 9

Elements and Features	State Share %	Overall Budget [1]			Actual Expenses to Date [2]			Remaining Budget			Percentage of Total Budget Expended
		Total	State	Local	Total	State Share	Local Share	Total	State Share	Local Share	
<i>Formula</i>	<i>a</i>	<i>b</i>	<i>c</i>	<i>d = b-c</i>	<i>e</i>	<i>f = e*a</i>	<i>g = e-f</i>	<i>h=b-e</i>	<i>i=c-f</i>	<i>j=d-g</i>	<i>k = e/b</i>
Element 9: WPIC 200-Yr Standard											
9.1 - Design	70%	\$1,371,000	\$959,700	\$411,300	\$1,220,527	\$854,369	\$366,158	\$150,473	\$105,331	\$45,142	89.0%
9.2 - Permitting & Environmental Dc	70%	\$759,000	\$531,300	\$227,700	\$566,673	\$396,671	\$170,002	\$192,327	\$134,629	\$57,698	74.7%
9.3 - Right of Way Acquisition	70%	\$609,000	\$426,300	\$182,700	\$127,107	\$88,975	\$38,132	\$481,893	\$337,325	\$144,568	20.9%
9.4 - Right of Way Support	70%	\$323,000	\$226,100	\$96,900	\$9,275	\$6,493	\$2,783	\$313,725	\$219,608	\$94,118	2.9%
9.5 - Construction Management	70%	\$1,501,000	\$1,050,700	\$450,300	\$4,703	\$3,292	\$1,411	\$1,496,298	\$1,047,408	\$448,889	0.3%
9.6 - Construction	70%	\$11,167,000	\$7,816,900	\$3,350,100	\$0	\$0	\$0	\$11,167,000	\$7,816,900	\$3,350,100	0.0%
9.7 - O&M Manual addendum	70%	\$50,000	\$35,000	\$15,000	\$0	\$0	\$0	\$50,000	\$35,000	\$15,000	0.0%
Subtotal Element 9		\$15,780,000	\$11,046,000	\$4,734,000	\$1,928,284	\$1,349,799	\$578,485	\$13,851,716	\$9,696,201	\$4,155,515	12.2%

"Yub25QPRTotElem9"

[1] As reflected in the 25th QWP dated October 11, 2015.

[2] Includes expenses incurred through December 31, 2015 (and paid through January 2016)

TRLIA Progress Report Overall Funding Status

Upper Yuba

For Period October/November/December 2015 (25th Qtr)

ELEMENT 10

Elements and Features	State Share %	Overall Budget [1]			Actual Expenses to Date [2]			Remaining Budget			Percentage of Total Budget Expended
		Total	State	Local	Total	State Share	Local Share	Total	State Share	Local Share	
<i>Formula</i>	a	b	c	d = b-c	e	f = e*a	g = e-f	h=b-e	i=c-f	j=d-g	k = e/b
Element 10: Yuba 1986 Break Site Remediation											
10.1: Project Management	70%	\$110,000	\$77,000	\$33,000	\$17,253	\$12,077	\$5,176	\$92,747	\$64,923	\$27,824	15.7%
10.2: Geotechnical Explorations	70%	\$135,000	\$94,500	\$40,500	\$134,404	\$94,083	\$40,321	\$596	\$417	\$179	99.6%
10.3: Design	70%	\$40,000	\$28,000	\$12,000	\$363	\$254	\$109	\$39,637	\$27,746	\$11,891	0.9%
10.4: Construction	70%	\$475,000	\$332,500	\$142,500	\$252,122	\$176,485	\$75,637	\$222,878	\$156,015	\$66,863	53.1%
10.5: Construction Management	70%	\$110,000	\$77,000	\$33,000	\$13,308	\$9,316	\$3,992	\$96,692	\$67,684	\$29,008	12.1%
Subtotal Element 10		\$870,000	\$609,000	\$261,000	\$417,451	\$292,216	\$125,235	\$452,549	\$316,784	\$135,765	48.0%

"Yub25QPRTotElem10"

[1] As reflected in the 25th QWP dated October 11, 2015.

[2] Includes expenses incurred through December 31, 2015 (and paid through January 2016)