



TRLIA
24th QUARTERLY WORK PLAN
FOR
FEATHER RIVER LEVEE
IMPROVEMENT PROJECT

1. 24th Quarterly Work Plan for quarter: January 1 – March 31, 2014
2. Date of Report: December 23, 2013
3. 24th Quarter Work Plan Summary:

Summary				
Description	State Share	Local Share	Total	Local Credit Applied
Element 1 & 8 - Land Acquisition	\$210,000	\$90,000	\$300,000	\$0
Elements 2 through 7, 9A & 10	\$190,284	\$53,030	\$243,315	\$0
Total	\$400,284	\$143,030	\$543,315	\$0

Quarterly Summary for Real Estate Activity	
State Share Elements 1 & 8	\$210,000
Local Share Elements 1 & 8	\$90,000
Estimated Total Quarterly State Real Estate Funding	\$300,000

Quarterly Advance Summary for Non-Real Estate Activity	
75% of State Share Elements 2 through 7, 9A & 10	\$142,713
Prior State Share Underfunded <i>(Estimated Based on 23rd Quarter Advance & 22nd QPR Reconciliation Below)</i>	\$4,643,043
Total Request of State Share for 24th Quarter	\$4,785,756

The calculation of Total Funding due for State Share at the start of 24th Quarter is subject to True-Ups to account for actual expenses incurred through the 22nd Quarter (based on the most recent 22nd QPR Submission and advance funding received to date). The State has processed advance payments through the 14th Quarter and, has also provided a release of \$5,000,000 of retention on State share of construction funding. At this point in time, because the State has provided more than 90% of its share of projected costs, no additional advance payments are expected. However, as further

discussed in this QWP, TRLIA has requested an additional release of retention from the State based upon the project’s near completion and the relative amount of retention held compared to costs to complete the project.

The following analysis presents TRLIA’s estimate of State funding due with no retention held. The purpose of this analysis is to provide the State, given the accrued actual expenses to date, an estimate of the funding due to TRLIA for construction related expenditures. This amount would represent a projection of the amount of retention held through the 22nd Quarter. This amount further supports TRLIA request for an additional release of retention.

Reconciliation of Prior State Funding for Construction

Per 22nd Quarter QPR (True-Up)

Total Construction Expenses (Elements 2 – 7, 9A & 10) [1]	\$130,054,247
Total State Share of Construction Expenses [2]	\$104,903,519
Total State Funding Due[3]	\$104,903,519
Total State Advance/True-Up Funding Received to Date for Construction	\$100,218,989
State Share Construction Funding Due as of 22 nd Quarter True-Up	\$4,684,530

[1] Excludes Creditable Expenses.

[2] DWR Review of 22nd QPR and prior Statements of Costs still in process.

[3] The analysis, for demonstrative purposes assumes that retention is no longer held, however, the State has only authorized the release of \$5,000,000 of retention to date.

Per 23rd Quarter QWP

Total Construction Projection (Elements 2 – 7, 9A & 10)	\$795,086
State Share of Projection	\$573,446
75% of State Share for Quarterly Advance	\$430,084

State Accumulated Credit Reported in 22nd QPR

Interest Earned on State Advanced Funding	\$132,949
State Share of Ag Lease Payments on FR Lands	\$196,970
State Share of Condemnation Settlements Less than Advance	\$141,653
Total State Funding Credits with TRLIA to Date	\$471,572

Net State Share Due (22nd Qtr True Up plus 23rd Qtr Advance) <i>Assumes no retention held</i>	\$4,643,043
---	--------------------

4. Project Element Information:

- **Engineering and construction matters:**
 - **Element 1 - Land Acquisition**
 - **Feature 1 (Segment 2/Setback Levee)**

- Land Transfer: During the 24th quarter TRLIA and the state will continue to have discussions pertaining to land transfer. Several key areas have surfaced as items that need to be clarified for land transfer to proceed: 1) Finalizing Final Accounting Packages (FAP); and 2) Identifying the various property uses (they do not align with the FAPs) within the setback and when they will be ready for transfer. Both of these items will be worked on the 24th quarter.

These items are listed in the Issues/Concerns portion of this report

1. FAPs: Below is Table 1, which is a list of the FAPs:

Number	FAP Name	CVFPB #	Acquired via Eminent Domain (ED) or Willing Seller (W)	Number of Parcels
1	P.F. Rice	14017	ED	1
2	Johl	14014	ED	1
3	H&H Trenching	14016	ED	1
4	Flores	14026	ED	1
5	Souza	14024	W	1
6	P. Heir	14021	ED	1
7	Maxey	14020	ED	1
8	T. Miller	14019	W	1
9	Webb	14015	W	1
10	Nordic	14013	ED	1
11	Dang	14010	ED	1
12	B. Heir	14009	ED	1
13	Naumes	14007	ED	4
14	S. Nieschulz	14033	ED	1
15	L. Nieschulz	14023	ED	1
16	Herold	14025	ED	1
17	Hadley	14018	ED	1
18	Uppal	14011	ED	1
18	T. Rice	14008	ED	1
20	J.M. Smith	14001	W	2
22	Foster	14022	ED	6
23	Foster, et al bar property	14027	ED	1
24	Anderson	14012	ED	2
25	Terry	14006	ED	1

Number	FAP Name	CVFPB #	Acquired via Eminent Domain (ED) or Willing Seller (W)	Number of Parcels
26	Davit	14005	ED	1
27	Mann	14003	W	1
28	Mann	14004	W	1
29	Danna	14002	ED	3

40

- The tables below reflect the current status of Real Estate actions and the proposed actions for the 24th quarter.

Table 2 – Final Accounting Packages Being Processed at Bender Rosenthal

CVFPB	OWNER	STATUS OF ACQUISITION	STATUS OF F.A.P. (target to be submitted to DWR)	SETTLEMENT AMOUNT / TOTAL CLAIMED	STATE SHARE OF SETTLEMENT	INVOICED TO DATE	COMMENTS
14002	Danna Investments	complete	23rd Qtr	\$1,282,139.24	\$1,061,926.70	\$1,205,097.93	The settlement was for less than the appraised (and invoiced) amount. The upcoming invoice is a "Credit Memorandum" to the State.
14003	Joga S. Mann, et ux	complete	Reviewed by DB	\$1,400,000.00	\$1,159,544.40	\$1,035,307.50	Waiting for Interest Calcs then to DWR
14005	Satinder N. Davit, et ux	complete	24th Qtr	\$2,883,962.00	\$2,388,629.99	\$2,388,629.99	
14006	Nora Lee Terry Trust	complete	23rd Qtr	\$128,800.00	\$106,678.08	\$106,678.00	
14012	Gene R. Anderson estate	Escrow	23rd Qtr	\$536,512.24	\$444,364.12	\$265,866.97	
14001	J.M. Smith, et al.	complete	23rd Qtr	\$306,900.00	\$254,188.70	\$254,188.42	Returned by DWR; will resubmit in December

Table 3 – Final Accounting Packages in Review at Downey Brand

CVFPB	OWNER	STATUS OF ACQUISITION	STATUS OF F.A.P. (target to be submitted to DWR)	SETTLEMENT AMOUNT / TOTAL CLAIMED	STATE SHARE OF SETTLEMENT	INVOICED TO DATE	COMMENTS
None							

Table #4 – Final Accounting Packages at DWR for Approval

CVFPB	OWNER	STATUS OF ACQUISITION	STATUS OF F.A.P. (target to be submitted to DWR)	SETTLEMENT AMOUNT / TOTAL CLAIMED	STATE SHARE OF SETTLEMENT	INVOICED TO DATE	COMMENTS
14008	T. Rice, et ux	complete	Submitted to DWR	\$211,721.00	\$175,357.07	\$171,230.41	Responding to questions from DWR; will resubmit in December
14011	R.S. Uppal, et. ux	complete	Submitted to DWR	\$731,305.00	\$605,700.44	\$605,698.97	To DWR 11/15/12 Original invoice used a truncated State percentage leaving State \$1.47 shortage.
14004	Joga S. Mann, et ux	complete	Submitted to DWR	\$11,200.00	\$9,276.36		At DWR 10/11/13
14023	Lloyd R. Nieschulz, et al.	complete	Submitted to DWR	\$43,771.96	\$36,253.95	\$35,741.53	To DWR 3/6/13; addressing interest calculation questions. Total includes \$512.42 Interest on Deposit owed to State
14025	Eleanor Herold	complete	Submitted to DWR	\$614,524.50	\$508,977.46	\$507,270.36	To DWR 12-28-2012. Total includes State share of Interest on Deposit of \$1,707.10

*Feather River Levee Improvement Project
24th Quarterly Work Plan
December 23, 2013*

14033	Susanna M. Nieschulz Trust	complete	Submitted to DWR	\$1,335,000.00	\$1,105,708.41	\$1,125,089.66	To DWR 3/6/13; addressing interest calculation questions. Total includes \$19,281.25 Interest on Deposit owed to State
14022	Foster Residence	complete	Submitted to DWR	\$45,000.00	\$37,271.07	\$19,049.66	Addressing DB Comments: To DWR in August
14022	Foster Ranch	complete	Submitted to DWR	\$4,880,000.00	\$4,041,840.48	\$4,041,840.48	Addressing DB Comments: To DWR in August
14027	Foster, et al bar property	complete	Submitted to DWR	\$100,000.00	\$82,824.60	\$82,824.60	To DWR in August

Table #5 – Final Accounting Packages Approved by DWR

CVFPB	OWNER	STATUS OF ACQUISITION	STATUS OF F.A.P. (target to be submitted to DWR)	SETTLEMENT AMOUNT / TOTAL CLAIMED	STATE SHARE OF SETTLEMENT	INVOICED TO DATE	COMMENTS
14007	Naumes, Inc.	complete	Complete	\$17,548,012.12	\$14,534,070.85	\$14,412,669.04	Approved subject to Cadastral Resolution. Difference is Interest on Deposit owed STATE
14009	B. Heir, et al.	complete	Complete	\$546,122.12	\$452,323.46	\$447,251.07	Approved subject to Cadastral Resolution. Difference is Interest on Deposit owed STATE
14010	Quinn X. Dang	complete	Complete	\$330,000.00	\$273,321.18	\$272,601.67	Approved subject to Cadastral Resolution. Difference is Interest on Deposit owed STATE
14013	Nordic Industries, Inc.	complete	Complete	\$1,125,000.00	\$931,776.75	\$908,259.62	Approved subject to Cadastral Resolution. Difference is Interest on Deposit owed STATE
14014	Jaspal S. Clar, et ux (Johl)	complete	Complete	\$781,000.00	\$646,860.13	\$646,860.13	Approved subject to Cadastral Resolution. Difference is Interest on Deposit owed STATE

*Feather River Levee Improvement Project
24th Quarterly Work Plan
December 23, 2013*

14015	R. E. Webb, et ux	complete	Complete	\$785,000.00	\$650,173.11	\$650,173.11	Approved subject to Cadastral Resolution. Difference is Interest on Deposit owed STATE
14016	H&H Trenching, Inc.	complete	Complete	\$293,500.00	\$243,090.20	\$246,342.73	Approved subject to Cadastral Resolution. Difference is Interest on Deposit owed STATE
14017	P.F. Rice, et ux	complete	Complete	\$382,500.00	\$316,804.10	\$316,804.10	Approved subject to Cadastral Resolution. Difference is Interest on Deposit owed STATE
14019	T. Miller	complete	Complete	\$1,020,000.00	\$844,810.92	\$844,810.92	Approved subject to Cadastral Resolution. Difference is Interest on Deposit owed STATE
14020	Steve Maxey, et ux	complete	Complete	\$495,000.00	\$409,981.77	\$409,981.77	Approved subject to Cadastral Resolution. Difference is Interest on Deposit owed STATE
14021	P. Heir	complete	Complete	\$18,500.00	\$15,322.55	\$15,295.90	Approved subject to Cadastral Resolution. Difference is Interest on Deposit owed STATE
14024	F.D. Souza Trust	complete	Complete	\$ 900.00	\$ 745.42	\$ 745.42	Approved subject to Cadastral Resolution. Difference is Interest on Deposit owed STATE
14026	Herminita Flores and Mark Aldrin Flores	complete	Complete	\$ 167,000.00	\$ 138,317.08	\$ 136,055.23	Approved subject to Cadastral Resolution. Difference is Interest on Deposit owed STATE
14018	Harold D. Hadley, Jr., Trust et al.	complete	Submitted to DWR	\$ 432,154.40	\$ 357,930.15	\$ 347,361.56	To DWR 12/4/12 Total includes State share of Interest on Deposit of \$10,568.59

Table #6 – Relocation Final Accounting Packages Approved by DWR

CVFPB	OWNER	SETTLEMENT AMOUNT	DWR PAYMENT	ORIGINALLY SUBMITTED TO DWR	F.A.P. APPROVED	FINAL INVOICE	CURRENT STATUS
14002	Eden (Danna)	\$126,218.86	\$93,177.68	4/2/2012	1/17/2013	-\$14,592.82	Total approved \$94,881.06; State share \$78,584.86
14015	Webb	\$307,767.36	\$155,296.13	7/30/2012	10/7/2013	\$99,610.96	
14017	Cummings (P.F.Rice)	\$900.00		1/20/2012	11/8/2012	\$745.42	Total approved \$900.00; State share \$745.42
14025	Herold	\$195,000.00		6/5/2012	8/15/2012	\$161,507.97	Total approved \$195,000.00; State share \$161,507.97
14014	Mincher (Johl)	\$21,238.91	\$124,236.90	10/25/2011	3/16/2012	\$106,645.86	Total approved \$21,238.91; State share \$17,591.04
14014	Johl	\$1,882.75		10/25/2012	3/21/2012	\$1,559.38	Total approved \$1,882.75; State share \$1,559.38
14016	Timmins (H & H)	\$26,331.00	\$43,482.92	1/5/2012	3/21/2012	-\$21,674.37	Total approved \$26,331.00; State share \$21,808.55
14019	Miller	\$149,688.50	\$155,296.13	3/12/2012	1/17/2013	-\$31,317.23	Total approved \$149,688.50; State share \$123,978.90

- **Uppal Parcel:** Late in the 23rd quarter it the escrow closed on the sale of this property. On November 12, 2013 the TRLIA Board sold the excess Uppal property for \$390,000. The minimum low bid was a little over \$70,000. See attachment 1 for Uppal property graphics.

There were five sealed bids. The high sealed bid was for \$160,000. The bidding process allowed for oral bids at the meeting, which led to three people bidding against each other. The high last bid was for \$390,000. Each bidder was required to submit a deposit of \$5,000 (cashier's check),

which was returned if they did not win.

▪ **Feature 2 (Segment 3):**

The information below reflects the recent Real Estate actions and identifies the work proposed in the 24th quarter.

Table #7 Segment 3 Parcels not yet acquired

CVFPB	OWNER	STATUS OF ACQUISITION	STATUS OF F.A.P. (target to be submitted to DWR)	SETTLEMENT AMOUNT / TOTAL CLAIMED	STATE SHARE OF SETTLEMENT	INVOICE D TO DATE	COMMENTS
14029	Richard G. Wilbur Trust	NEGOTIATING					Negotiations impacted by eminent domain action for property on the Upper Yuba Project.
14045	Ronald R. & Marcia E. Wessels	NEGOTIATING					7/30/13: Rec'd approval from DWR for access reservation

Table #8 – Segment 3 – Parcel Acquisitions being completed and Final Accounting Packages being processed

CVFPB	OWNER	STATUS OF ACQUISITION	STATUS OF F.A.P. (target to be submitted to DWR)	SETTLEMENT AMOUNT / TOTAL CLAIMED	STATE SHARE OF SETTLEMENT	INVOICE D TO DATE	COMMENTS
14000	Steven Stewart, et ux	In Escrow		\$1,650	\$1,155		Need Reconveyance to close
14028	Trumon G. Cooper Trust	Escrow Closed	23rd Qtr	\$6,900	\$4,830		Need Final Policy of Title
14033	Henry P. Smith	Escrow Closed	23rd Qtr	\$46,300	\$32,410		Need Final Policy of Title
14034	Linda County Water District	Escrow Closed	24th Qtr	\$15,400	\$10,780		
14037	E Street MX, Inc.	Escrow Closed	23rd Qtr	\$2,550	\$1,785		Need Final Policy of Title
14038	John Roth	Escrow Closed	23rd Qtr	\$750	\$525		Need Final Policy of Title
14039	California Capital Loans	Escrow Closed	23rd Qtr	\$1,000	\$700		Need Final Policy of Title
14040	John Roth	Escrow Closed	23rd Qtr	SEE ABOVE			Need Final Policy of Title
14041	Carolyn J. & Gary D. Tindel	Escrow Closed	23rd Qtr	\$5,580	\$3,906		Need Final Policy of Title
14042	Salvation Army	Escrow Closed	23rd Qtr	\$62,600	\$43,820		Need Final Policy of Title

14043	Forrest Ray Miller	In Escrow	24th Qtr	\$1,650	\$1,155		Need 1099 from Miller
14044	Adams	Escrow Closed	23rd Qtr	\$1,000	\$700		Need Final Policy of Title

Table #9 – Segment 3 - Final Accounting Packages in Review at Downey Brand

CVFPB	OWNER	STATUS OF ACQUISITION	STATUS OF F.A.P. (target to be submitted to DWR)	SETTLEMENT AMOUNT / TOTAL CLAIMED	STATE SHARE OF SETTLEMENT	INVOICED TO DATE	COMMENTS
None							

Table #10 – Segments 3 – Final Accounting Packages Approved by DWR

CVFPB	OWNER	STATUS OF ACQUISITION	STATUS OF F.A.P. (target to be submitted to DWR)	SETTLEMENT AMOUNT / TOTAL CLAIMED	STATE SHARE OF SETTLEMENT	INVOICED TO DATE	COMMENTS
14031	State of California	Complete	Complete	\$7,100.0	\$4,970.0	\$4,970	APPROVED 5-24-11
14030	Jourbee Khang, et ux	Complete	Complete	\$72,500.0	\$50,750.0	\$50,750	APPROVED 4-17-13

➤ **Element 2: Feather River Segment 2 setback levee w/o tie-ins and new levee construction requiring federal action (except as noted in features):**

- Feature 1.1 Design: **Completed** – Portion of retention released to TRLIA on April 26, 2012. Features noted below with the retention release requested are shown highlighted in orange on the detailed quarterly projection tables. See Project Element 10 for Project Closeout.
- Feature 1.2 Permitting:
 - TRLIA will continue to work with DWR floodway maintenance staff and F&WS to develop an acceptable approach to floodway maintenance for all parties in the Feather River Floodway during the 24th quarter. DWR has set up a committee to guide the actions within the Feather River Corridor, with participation from various branches of DWR, the CVFPB, the local maintenance districts, TRLIA, the counties, and other interested stakeholder groups. The Committee is called the Feather River Corridor Management Plan development team.

- The OMRR&R Agreement was approved and signed by CVFPB, TRLIA and RD784 in August 2011. TRLIA will continue to perform its obligations under this Agreement during the 24th quarter.
- The DWR Urban Levee review team has completed its ULDC (Urban Levee Design Criteria) review of this element. The ULE team did not find any issues. The TRLIA evaluation team will complete its review of this element in the 24th quarter.
- Feature 1.3 Right of Way Support:
 - Both legal and real estate activity will continue during the 24th quarter to support the ongoing land acquisition activities associated with Project Element 1 Feature 1.
 - During the 24th quarter TRLIA will continue to work with DWR on developing the process to transfer property to the state. This action is also necessary for Project Element 1 Feature 2, and Project Element 8 Feature 1 property transfers. TRLIA will capture the cost of this effort for all three Project Element Features in this feature.
- Feature 2 Construction Management: **Completed** – Portion of retention released to TRLIA on April 26, 2012. Features noted below with the retention release requested are shown highlighted in orange on the detailed quarterly projection tables. See Project Element 10 for Project Closeout. Any additional construction management oversight for Project Element 2 Feature 4 work will be accounted for under Project Element 6 as part of land management activities.
- Feature 3.1 Construction of Setback Levee Foundation: **Completed** – Portion of retention released to TRLIA on April 26, 2012. Features noted below with the retention release requested are shown highlighted in orange on the detailed quarterly projection tables. See Project Element 10 for Project Closeout.
- Feature 3.2 Construction of Setback Levee Embankment and related items: **Completed** – Portion of retention released to TRLIA on April 26, 2012. Features noted below with the retention release requested are shown highlighted in orange on the detailed quarterly projection tables. See Project Element 10 for Project Closeout.
- Feature 3.3 Relocation of PG&E facilities: **Completed** – Portion of retention released to TRLIA on April 26, 2012. Features noted below with the retention release requested are shown highlighted in orange on the detailed quarterly projection tables. See Project Element 10 for Project Closeout.

- Feature 4 Environmental and Cultural Mitigation:
 - Monitoring of the Vegetated Wave Buffer will continue in the 24th quarter.
 - Environmental Mitigation/Restoration: Environmental monitoring of the Wetlands Mitigation, Swale, and Elderberry Mitigation Area will continue in the 24th quarter.
 - Cultural Mitigation: Monitoring of the planting at the Cultural Site will continue during the 24th quarter.
- Feature 5 O&M Manual:
 - This Feature is **completed** – This item has very little costs allocated to the Feature, a separate retention request would not be efficient and worthwhile to process. Retention release for this item will be requested later with another separate larger milestone.

A comprehensive addendum covering all three Feather River levee segments was issued on December 12, 2011. As of late in the 19th quarter the Corps has reviewed the combined manual and provided no additional comments. The Corps was preparing a Section 408 compliance acceptance letter for the Feather East Levee. However additional work on the toe access corridor in Element 5 has delayed this acceptance. The additional work was completed in the 23rd quarter, so the Corps should issue their acceptance letter in the 24th quarter. RD 784 has the combined 2011 manual and is using it to perform O&M.

- **Element 3:** Feather River Segment 2 tie-ins and new levee construction requiring federal action.
 - Feature 1 - Construction (Embankment Feature 1.1 and Foundation Feature 1.2): **Completed** – Portion of retention released to TRLIA on April 26, 2012. Features noted below with the retention release requested are shown highlighted in orange on the detailed quarterly projection tables. See Project Element 10 for Project Closeout.
- **Element 4:** Feather River Segment 2 existing levee degrade
 - Feature 4.1 Construction: **Completed** – Portion of retention released to TRLIA on April 26, 2012. Features noted below with the retention release requested are shown highlighted in orange on the detailed quarterly projection tables. See Project Element 10 for Project Closeout.

- **Element 5:** Feather River Segment 3 levee improvement:
 - Feature 1.1 Design: **Completed** – Portion of retention released to TRLIA on April 26, 2012. Features noted below with the retention release requested are shown highlighted in orange on the detailed quarterly projection tables. See Project Element 10 for Project Closeout.
 - Feature 1.2 Permitting:
 - The DWR Urban Levee review team has completed its ULDC (Urban Levee Design Criteria) review of this element. The ULE team did not find any issues. The TRLIA evaluation team will complete its review of this element in the 24th quarter.
 - Feature 1.3 Right of Way Support:
 - Both legal and real estate activity will continue during the 24th quarter to support the ongoing land acquisition activities associated with Project Element 1 Feature 2.
 - Feature 2 Construction Management:
 - Limited Construction Management work will be performed during the 24th quarter to monitor/maintain wet weather construction measures due to completion of the landside access corridor.
 - Feature 3 Construction:
 - This feature is **completed**
 - Feature 4: O&M manual addendum:
 - This Feature is **completed** – This item has very little costs allocated to the Feature, a separate retention request would not be efficient and worthwhile to process. Retention release for this item will be requested later with another separate larger milestone.
- **Element 5A:** Feather River Segment 3 Erosion Site 2 (Added to Agreement by Amendment 1)
 - Feature A1.1 Design: **Completed** – Portion of retention released to TRLIA on April 26, 2012. Features noted below with the retention release requested are shown highlighted in orange on the detailed quarterly projection tables. See Project Element 10 for Project Closeout.

- Feature A1.2 Permitting: **Completed** – Portion of retention released to TRLIA on April 26, 2012. Features noted below with the retention release requested are shown highlighted in orange on the detailed quarterly projection tables. See Project Element 10 for Project Closeout.
 - Feature A1.3 Right of Way Support: **Completed** – Portion of retention released to TRLIA on April 26, 2012. Features noted below with the retention release requested are shown highlighted in orange on the detailed quarterly projection tables. See Project Element 10 for Project Closeout. Future right of way costs will be included in Project Element 5 Feature 1.3.
 - Feature A2 Construction Management: **Completed** – Portion of retention released to TRLIA on April 26, 2012. Features noted below with the retention release requested are shown highlighted in orange on the detailed quarterly projection tables. See Project Element 10 for Project Closeout.
 - Feature A3 Construction: **Completed** – Portion of retention released to TRLIA on April 26, 2012. Features noted below with the retention release requested are shown highlighted in orange on the detailed quarterly projection tables. See Project Element 10 for Project Closeout.
 - Feature A4 O&M Manual: Final O&M manual addendum was issued on December 12, 2011, which included this Project Element (Erosion Site 2). **Completed** – Portion of retention released to TRLIA on April 26, 2012. Features noted below with the retention release requested are shown highlighted in orange on the detailed quarterly projection tables. See Project Element 10 for Project Closeout.
- **Element 6:** Feather River Land Management:
- Feature 1 Environmental Maintenance Activities: Environmental monitoring of the Elderberry Mitigation Area, Wetlands, and Swale will continue in the 24th quarter.
 - Feature 2 Lease Back Activities (e.g. farming): TRLIA has 7 farming leases in the Feather Setback area and one Revocable Easement and Profit Agreement (Rice) in the landside levee toe access corridor. In the 19th quarter 2 interim non-renewable leases (Sharma and Atwal) were approved by TRLIA. Management of these leases will continue in the 24th quarter.
- Funds received pursuant to the leases are reported to DWR within the quarterly progress reports and the State share of these funds are to be used to offset the remaining funding due to TRLIA through the EIP funding agreement. Lease revenues are held in separate funds at Yuba County and interest earned on these funds is accounted for as well.

During the 18th quarter the acreages of some of the parcels were found to be off based on survey information. The updated acreages are shown below in (red) if a change was found.

1. Foster (016-020-005, 014-370-030, 014-370-029, 016-010-002, 016-010-007) - 248 (239.6) Acre Walnut Orchard. Term of lease January 1, 2009 through December 31, 2014. Rent is 10% of the Adjusted Gross Income.
2. T. Miller (014-370-033) – 20 Acre Walnut Orchard. Term of lease August 16, 2008 to August 15, 2013. Rent is 10% of the Gross Sales. During the 22nd quarter TRLIA is extended the lease to June 30, 2014 (current expiration date of the TRLIA EIP funding agreement).
3. Maxey (014-370-024) – 27.38 (28.8) Acres Walnut, persimmons, mandarins, chestnuts and jujube Orchards. Term of lease August 16, 2008 to August 15, 2013. Rent is 10% of the Gross Income on walnuts and 10 % of the Adjusted Gross Income for other crops. During the 22nd quarter TRLIA is extended the lease to June 30, 2014 (current expiration date of the TRLIA EIP funding agreement).
4. Hadley (014-370-020) – 9 (6.3) Acre Walnut Orchard. Term of lease November 1, 2008 to November 30, 2013. Rent is 10% of the Gross Sales. During the 22nd quarter TRLIA is extended the lease to June 30, 2014 (current expiration date of the TRLIA EIP funding agreement).
5. Davit (013-010-014) – 99 (81.9) Acre Walnut & Peach Orchard. Term of lease October 21, 2009 to December 31, 2014. Rent is 10% of the Adjusted Gross Income. Davit was allowed to remove the peach orchard (found to be too old) and replace with walnuts at his own risk, since there is no guarantee the state will extend the lease.
6. F. Miller (014-370-003 and 014-370-037) – 66 Acres Walnut Orchard. Term of lease July 21, 2010 through December 31, 2013. Rent is 30% of the Gross Income. During the 22nd quarter TRLIA is extended the lease to June 30, 2014 (current expiration date of the TRLIA EIP funding agreement).
7. Nieschulz (016-010-016) – 35.07 (30.3) Acres of Orchard trees. Term of lease retroactively to January 1, 2009 and terminating at the end of the 2011 crop year. The lease was executed in September 2010. After the 3 year term, the lease is automatically extended each Jan 1. For the 2010 crop year and all subsequent years Tenant shall pay the amount of 15% of the Gross Income from the property over the course of the applicable prior twelve month period.

8. Rice (014-250-029) – 4.82 Acres of Peach Orchard. Term of Agreement: June 22, 2010 through transfer of property to the State. Beginning September 2013, Agreement may be terminated at the end of any calendar year on 90 days notice. Agreement may be terminated earlier by CVFPB. Mr. Rice was notified that his lease will be terminated on September 30, 2014 by TRLIA letter dated July 16, 2013. This letter was coordinated with DWR and CVFPB in the 21st quarter.
9. Sharma (APN 014-250-027). During the 19th quarter TRLIA awarded a non-renewable 2 to 5 year lease to Mr. Sharma (Sunrise Orchards) to plant row crops on 537 acres (Naumes Property) within the Feather Setback area. Tenant shall pay to Landlord, in addition to providing a valuable service of maintenance and upkeep of the Property, including maintenance of any wells and pumps, weed abatement, controlling of trash dumping, pest control pertaining to the crop being grown, and property surveillance, an annual rent for the Premises in the amount of the lesser of five percent (5%) of the Gross Income from the Property over the course of the applicable prior twelve-month period, or an amount equal to \$10,000 per month. Rent shall be paid in arrears, on December 1st of each year.

The term of this Lease shall commence upon August 1, 2012 and terminate on July 31, 2017. The term of this Lease shall be non-renewable. After two years from the commencement date of the Lease, either party to the Lease, and any successors and assigns to the Lease pursuant to Paragraph 33 below, may give 30 days' written notice to terminate this Lease. Notwithstanding the foregoing, Landlord may terminate this Lease at any time on 60 days' notice if Landlord finds it necessary to do so in meeting Landlord's needs, including any federal or state requirements.

10. Atwal (APN 014-290-034). During the 19th quarter TRLIA awarded a non-renewable 1 year lease to Mr. Sarbdeep Atwal (Heer/Atwal Orchards) to plant row crops on 23 acres (Uppal Property) of reclaimed borrow area east of the landside levee toe access corridor. The term of this Lease commenced upon September 1, 2012 and shall terminate on August 31, 2013. This lease expired in the 22nd quarter.

During the 18th quarter TRLIA requested DWR allow TRLIA to extend leases 1 to 7 for a long term (20 to 30 years) to provide farmers the ability to plan future maintenance and replacement investments for the leased orchards. Late in the 23rd quarter DWR granted the leases to be extended for an interim period (3 years) so that the farmers could continue to maintain the leased orchards. The interim extensions need to be reviewed and approved by DWR. The issue of longer term leases for the orchards is still being considered.

This item is listed in the issues/concerns portion of this report.

A schedule of payments is shown below for the 24th Quarter: (Note: A Summary of Ag Lease Payments received is also included with the regular Quarterly Progress Reports.)

- No agricultural lease payments are due in the 24th Quarter.
- Feature 3 Land Maintenance of Setback area (e.g. security and land management activities) post construction and prior to transfer of property to State: TRLIA will continue to manage activities on the 1600 acres that are required for the Setback levee in the 24th quarter.
 - TRLIA will continue to perform interim land operations and maintenance activities for the Feather Setback area per the Setback Area O&M Plan. The plan included short-term and long-term operations and maintenance of the borrow sites, security/maintenance road, onsite mitigation areas (wetlands, swale, and elderberry area), farm leases, security of setback area, and trash pickup.
 - TRLIA anticipates continuing limited public access into the Feather Setback area during the 24th quarter and will continue to operate and monitor security cameras. Three of the four cameras are operating (PS 3, Broadway Ramp, near Star Bend). The fourth camera by Country Club Road/former FR Levee has poor signal strength and will be moved to a better location.
 - In the 24th quarter TRLIA will continue to search for a locally funded option that would fix Broadway entrance dust issue and potentially move the public setback entrance to Star Bend.
 - TRLIA will participate in the DWR Lower Feather River Floodway Corridor Management committee and the following subcommittees: Funding, Hydraulics, Permitting, and Policy.
 - In the 24th quarter it is anticipated that TRLIA will be working with FESSRO on the TRLIA Feather River Floodway Corridor Restoration Project.
 - In the 24th quarter it is anticipated that TRLIA will be working with the Flood Corridor Program on the Three Rivers Flood Corridor Project
- **Element 7:** Project Management, legal support, community relations support, land management support, and overhead

- Activity is anticipated in all Features during the 24th quarter.
 - Feature 2 Consulting Support: The administration of TRLIA’s funding agreement and management of the overall FRLIP program will continue until the final completion of the project.
 - Starting with the 17th quarter work plan TRLIA has shifted the allocation of its administration and overhead expenses to reflect an apportionment of these expenses to additional work TRLIA has underway in the Goldfields in addition to its EIP projects. The projections for expenses allocated to the FRLIP for this quarter have been reduced to reflect a lower allocation.
- **Element 8:** Feather River EIP Land Acquisition (formally Associated Project Element 1
- Feature 1 Feather Segment 1: The TRLIA Segment 1 Real Estate Plan was approved in November 2011. During the 24th quarter TRLIA will continue negotiations with property owners within Feather Segment 1 to appraise and acquire the 50 foot wide levee O&M toe access corridor. Below are tables that reflect the estimated acquisition costs reflected in the Segment 1 Real Estate Plan:

Table #11 - Property Acquisition Status

CVFPB	OWNER	STATUS OF ACQUISITION	STATUS OF F.A.P.	SETTLEMENT AMOUNT / TOTAL CLAIMED	STATE SHARE OF SETTLEMENT	INVOICED TO DATE	COMMENTS
14047 14048	Danna Properties, LP	NEGOTIATING					TRLIA was advised Danna obtaining appraisal
14049	Shoei Food USA, Inc.	To be submitted 23rd Qtr	In Process	\$72,100.00	\$59,716.10		Target FAP submitted 12/13
14076	Valley View Packing Co.	NEGOTIATING					Valley View has raised the necessity of an access easement over the levee as an issue

- Landside and Waterside Access Toe Corridor License Agreements: Shoei was issued a landside access corridor license. It is anticipated that the following properties are proposed to have licenses issued to them in the 24th

quarter: Danna, land and waterside access corridor; and Valley View, waterside access corridor.

- **Element 9:** Feather River Segment 1 Levee Improvement (formally Associated Project Element 2)
 - Feature 1.1 Design: **Completed** – Portion of retention released to TRLIA on April 26, 2012. Features noted below with the retention release requested are shown highlighted in orange on the detailed quarterly projection tables. See Project Element 10 for Project Closeout.
 - Feature 1.2 Permitting: The DWR Urban Levee Evaluation (ULE) team completed their review of this section of the TRLIA levee system. The DWR ULE team identified one ULDC exceedence in this element. Through seepage criteria was exceeded at design station 133+00. This exceedence will be remediated with an erosion protection berm. An encroachment permit application package for this work was submitted to the CVFPB on May 13, 2013. The CVFPB did approve the encroachment permit to do this work in the 22nd quarter, but the permit was conditioned on receiving a minor 408 letter from the Corps. The Corps was not able to produce the letter before the 2013 construction season had expired, so this work will be done in 2014. TRLIA will use only local funds to pay for this remediation berm; therefore, this work is not listed in the construction feature of this project element. It is anticipated that the Segment 1 berm permit will be issued in the 24th quarter
 - Feature 1.3 Right of Way Support:
 - Both legal and real estate activity will continue during the 24th quarter to support the ongoing land acquisition activities associated with Project Element 8 Feature 1.
 - Feature 2 Construction Management:
 - **Completed** – Portion of retention released to TRLIA on April 26, 2012. Features noted below with the retention release requested are shown highlighted in orange on the detailed quarterly projection tables. See Project Element 10 for Project Closeout.
 - Feature 3 Construction:
 - **Completed** – Portion of retention released to TRLIA on April 26, 2012. Features noted below with the retention release requested are shown highlighted in orange on the detailed quarterly projection tables. See Project Element 10 for Project Closeout.
 - Feature 4 O&M manual addendum:

- This Feature is **completed** – This item has very little costs allocated to the Feature, a separate retention request would not be efficient and worthwhile to process. Retention release for this item will be requested later with another separate larger milestone.
- **Element 9A: Feather River Segment 1 Crack Repair (Added to Work Plan by Addendum 1)**
- Feature A1.1 Engineering and Construction Management: Crack monitoring (e.g. inclinometers) will be done during the 23rd quarter by RD784. On October 20, 2011 TRLIA asked CVFPB to reduce the monitoring from monthly to quarterly and after any large flood events. While some movement is still discernible, it is very small and the section is considered stable by TRLIA. The CVFPB agreed to reduce the monitoring requirements. **This item is now completed.**

As part of a supplemental retention release request submitted during the 19th Quarter on January 3, 2013, this item was deemed complete and a release of retention was requested. This item is now highlighted in yellow in the tables below.
 - Feature A1.2 Right of Way Support: See Project Element 9 Feature 1.3
As part of a supplemental retention release request submitted during the 19th Quarter on January 3, 2013, this item was **deemed complete** and a release of retention was requested. This item is now highlighted in yellow in the tables below.
 - Feature A2 Construction: **Completed** – Portion of retention released to TRLIA on April 26, 2012. Features noted below with the retention release requested are shown highlighted in orange on the detailed quarterly projection tables. See Project Element 10 for Project Closeout.
 - Feature A3 O&M manual addendum: See Project Element 9 Feature 4
- **Element 10 (Added by Amendment 2): Closeout Process post June 30, 2012:**
- 10.1 Feature 1: Closeout Process post June 30, 2012:
 - In April 2012, DWR released a portion, \$5,000,000 of the retention held on the State's share of funding for cost incurred by TRLIA. In support of this partial retention release, on August 16, 2012 TRLIA delivered to DWR all of the requested hard copy documentation related to the partial release of retention. TRLIA will supplement the closeout documentation when the final closeout of the project occurs as noted within the closeout documentation report provided with the hard copy transmission of documentation.

- On January 3, 2013, TRLIA provided DWR with a request for the release of additional retention of the State Cost share for the project. Specifically, TRLIA requested the release of an additional \$1,153,562 of retention based upon additional costs incurred since the April 2012 release of retention and additional progress made toward the completion of project through the 18th Quarter. TRLIA understands that DWR continues to review this request.
- The State continues to withhold in excess of \$3,000,000 of State cost sharing on expenses incurred through the 19th Quarter (December 31, 2012) and additional retention mounts with each additional quarter of expenses incurred. TRLIA expects that there is less than \$5,000,000 of costs remaining to complete the project. Given this fact, the State is effectively withholding well over 50% of the remaining costs of the project which is in excess of any reasonable amount of retention needed to ensure the completion of the project.

TRLIA will continue to work with the State to prepare final closeout documentation for DWR and associated reviewers for formal project closeout review to support an additional release of retention.

This item is listed in the Issues/Concerns portion of this report.

- **Environmental matters:**

- Project Element 2:

- River Partners will continue to maintain the Feather River Elderberry mitigation area, wetlands, and drainage swale.
- Vegetated Wave Buffer: See Project Element 2 Feature 1.2 for update.
- Elderberry Mitigation Area: See Project Element 2 Feature 1.2 for update.

- **Status of permits, easements, rights-of-way, and approvals as may be required by other State, federal, and/or local agencies:**

- **Project Elements 2, 3, 4, 5, 5A, 9, & 9A:**

- See Attachment 2 for the Permit status update.

- **Project Element 2:**

- TRLIA will continue to work with DWR floodway maintenance staff and F&WS to develop an acceptable approach to floodway maintenance for all parties in the Feather River Floodway during this quarter. DWR has set up a

committee to guide the actions within the Feather River Corridor, with participation from various branches of DWR, the CVFPB, the local maintenance districts, TRLIA, the counties, and other interested stakeholder groups. The Committee is called the Feather River Corridor Management Plan development team.

- TRLIA will continue to perform its obligations under the OMRR&R Agreement during the 24th quarter.

- **Major accomplishments planned for the quarter (i.e. tasks to be completed, milestones to be met, meetings to be held or attended, etc.):**
 - Project Element 1, Feature 1: Segment 2 Real Estate Acquisitions – Late in the 23rd quarter the escrow on the sale of the Uppal excess property closed. On November 12, 2013 the TRLIA Board sold the excess Uppal property for \$390,000.

- **Issues/concerns that have, will, or could affect the schedule or budget, with a recommendation on how to correct the matter:**
 - **Issue 1:** There are multiple distinct planned projects in the setback area that are anticipated to lead to different land transfer dates for the properties. The anticipated land transfer dates for the various land uses extend beyond the current Feather River EIP funding agreement date of June 30, 2014.

Recommended Resolution: The funding agreement date needs to be extended to June 30, 2016.

 - **Issue 2:** During the 18th quarter TRLIA requested DWR allow TRLIA to extend leases 1 to 7 for a long term (20 to 30 years) to provide farmers the ability to plan future maintenance and replacement investments for the leased orchards. Late in the 23rd quarter DWR granted the leases to be extended for an interim period (3 years) so that the farmers could continue to maintain the leased orchards. The interim extensions need to be reviewed and approved by DWR. The issue of longer term leases for the orchards is still being considered.

Recommended Resolution: DWR agree to extend the leases for an extended time period; preferably at least 10 to 15 years or if possible even longer so that the farmers can make long term investments into the leased orchards.

 - **Issue 3:** On January 3, 2013, TRLIA requested an Additional Release of Retention held by DWR on the State Cost Share for the Project. The State has not responded to this request. The State continues to withhold in excess of \$3,000,000 of State cost sharing on expenses incurred through the 18th Quarter (September 30, 2012). TRLIA continues to incur costs on the project adding to

the amount of retention held. TRLIA expects that there is less than \$5,000,000 of costs remaining to complete the project. Given this fact, the State is effectively withholding well over 50% of the remaining costs of the project which is in excess of any reasonable amount of retention needed to ensure the completion of the project.

Recommended Resolution: DWR should process the requested retention release requested by TRLIA as soon as possible.

- **Describe differences between the work to be performed and the work outlined in the Overall Work Plan, including anticipated change orders:**

- No changes have been identified as part of this Quarterly Work Plan.

- **Any litigation, proceedings or claims relating to the Project:**

- Elements 1 thru 10: None at this time

5. Cost Information by Project Element: TRLIA is submitting this 24th Quarterly Work Plan after the completion of the 22nd Quarterly Progress report. The budgets and remaining budgeted expenditures are reflective of actual costs incurred as of the 22nd Quarter and estimated costs to be incurred for the 23rd Quarter. As result, the financial information included within this Quarterly Work Plan presents the projected remaining budget as of December 31, 2013 expected in each element taking into consideration projected expenses for the 23rd Quarter based on the 23rd QWP and adjustments for actual expenditures as they are known.

- **List of changes planned to Overall Work Plan Budget and revised Overall Work Plan Budget (if needed) :**

No changes are planned at this. The modifications provided as of the Overall Work Plan Budget submitted with the 2nd Amendment to Funding Agreement are reflected here.

- **Projected costs compared to Overall Work Plan Budget:**

- Element 1 – Real Estate (Segments 2 & 3): The Revised Overall Work Plan Budget for Element 1 is \$42.024 million. Through December 2013, TRLIA expects to have expended approximately 98% of the revised total budget, about \$41.3 million. In the 24th quarter of the project, TRLIA does not expect to expend funds on additional ROW acquisition for the Segment Toe-Access-Corridor.

- Element 8 – Real Estate (Segment 1): The Overall Work Plan Budget for Element 8 is \$630,272. Through December 2013, TRLIA expects to have

expended approximately 27% of the revised total budget, about \$170,000. TRLIA's updated schedule as noted previously in this report is to continue the process for the acquisition of the Segment 1 Toe-Access-Corridor in this 24th Quarter. TRLIA has forecasted approximately \$300,000 of expenditures for property acquisition this quarter..

- Element 2 – Segment 2 Construction (Except Tie-Ins): The revised overall budget for Element 2 is \$89.4 million. Through the end of the 23rd Quarter (December 2013) TRLIA expects to have expended \$89 million. During the 24th Quarter TRLIA expects to incur an additional \$59,000. This will be related to 200-Year compliance determination and ROW support work. Including this work, through March 2014, TRLIA expects to have expended approximately 99.7% of the revised budget for Element 2.
- Element 3 –Segment 2 Construction (Tie-Ins): This element is complete and no work is forecasted this Quarter.
- Element 4 – Segment 2 Existing Levee Degrade: This element is complete and no work is forecasted this Quarter.
- Element 5 – Segment 3 Levee Improvements: The revised overall budget for Element 5 is \$13.1 million. Through end of the 23rd Quarter (December 2013), TRLIA expects to have expended approximately 92% of the total revised budget, about \$12.0 million. Through the 23rd Quarter (December 2013), TRLIA expects to work on acquisition and required maintenance easements as well as monitor the site during the winter. During the 24th Quarter TRLIA expects to incur an additional \$16,000. This will predominately be remaining construction management related expenses associated with the fence construction (winter monitoring). Including this work, through March 2014, TRLIA expects to have expended approximately 99% of the revised budget for Element 5.
- Element 5A – Segment 3 Erosion Site 2: This element is complete and no work is forecasted this Quarter.
- Element 6 – Feather River Land Management: The revised overall budget for Element 6 is \$2,305,000. Through the 23rd Quarter, December 2013, TRLIA will have expended approximately 47.3% (\$1,090,000) of this budget. Additional activities related to managing the 1,600 acre setback area will continue this quarter. Additionally, as previously discussed, TRLIA will continue to manage all Agricultural Leases on the property and any income produced from the property will go to offset the costs of the project.
- Element 7 - Project Management, Legal, Community Relations, Land Management, and Overhead: The revised overall budget for Element 7 is \$6.2 million. The budget has been adjusted to reflect the extended duration of the project related to the second amendment to the funding agreement. Through the 23rd Quarter (December 2013), TRLIA expects to have expended \$6.1 million. Through the 24th Quarter (March 2014), TRLIA expects to expend an additional \$32,000. TRLIA has adjusted the overhead allocation to the Feather River

project and will continue to monitor the budget of this element and, if the expenses are forecasted to exceed the budget by more than 5%, TRLIA will adjust the overall budget for the element.

- Element 9 – Segment 1 Levee Improvements: The overall budget for Element 9 is \$12.4 million. Through end of the 23rd Quarter (December 2013), TRLIA expects to have expended approximately 98% of the total budget, about \$12.2 million. Through the 24th Quarter (March 2014), TRLIA expects to work on the acquisition of the required levee toe access corridor. Expenses for the quarter are primarily related to Real Estate support activities.
- Element 9A –Segment 1 Crack Repair: This element is complete and no work is forecasted this Quarter.
- Element 10 – Project Closeout efforts: This Element was added to the project as part of the 2nd Amendment to the funding agreement. The overall budget for Element 10 is \$100,000. Through end of the 23rd Quarter (December 2013), TRLIA will have expended approximately \$23,000 on close out efforts (23%) on this element. Through the 24th Quarter (March 2014), TRLIA expects to expend approximately \$10,000 associated with continuing with its request for an additional release of retention and preparing associated supporting close-out documentation.

The amount of funds sought from the State and the Amount of Local Funds intended to be expended

As presented in Item 3 of this 24th Quarter Work Plan:

Summary				
Description	State Share	Local Share	Total	Local Credit Applied
Element 1 & 8 - Land Acquisition	\$210,000	\$90,000	\$300,000	\$0
Elements 2 through 7, 9A & 10	\$190,284	\$53,030	\$243,315	\$0
Total	\$400,284	\$143,030	\$543,315	\$0

Quarterly Summary for Real Estate Activity	
State Share Elements 1 & 8	\$210,000
Local Share Elements 1 & 8	\$90,000
Estimated Total Quarterly State Real Estate Funding	\$300,000

Quarterly Advance Summary for Non-Real Estate Activity	
75% of State Share Elements 2 through 7, 9A & 10	\$142,713

Prior State Share Underfunded <i>(Estimated Based on 23rd Quarter Advance & 22nd QPR Reconciliation Below)</i>	\$4,643,043
Total Request of State Share for 24th Quarter	\$4,785,756

The calculation of Total Funding due for State Share at the start of 24th Quarter is subject to True-Ups to account for actual expenses incurred through the 22nd Quarter (based on the most recent 22nd QPR Submission and advance funding received to date). The State has processed advance payments through the 14th Quarter and, has also provided a release of \$5,000,000 of retention on State share of construction funding. At this point in time, because the State has provided more than 90% of its share of projected costs, no additional advance payments are expected. However, as further discussed in this QWP, TRLIA has requested an additional release of retention from the State based upon the project's near completion and the relative amount of retention held compared to costs to complete the project.

The following analysis presents TRLIA's estimate of State funding due with no retention held. The purpose of this analysis is to provide the State, given the accrued actual expenses to date, an estimate of the funding due to TRLIA for construction related expenditures. This amount would represent a projection of the amount of retention held through the 22nd Quarter. This amount further supports TRLIA request for an additional release of retention.

Reconciliation of Prior State Funding for Construction

Per 22nd Quarter QPR (True-Up)

Total Construction Expenses (Elements 2 – 7, 9A & 10) [1]	\$130,054,247
Total State Share of Construction Expenses [2]	\$104,903,519
Total State Funding Due[3]	\$104,903,519
Total State Advance/True-Up Funding Received to Date for Construction	\$100,218,989
State Share Construction Funding Due as of 22nd Quarter True-Up	\$\$4,684,530

[1] Excludes Creditable Expenses.

[2] DWR Review of 22nd QPR and prior Statements of Costs still in process.

[3] The analysis, for demonstrative purposes assumes that retention is no longer held, however, the State has only authorized the release of \$5,000,000 of retention to date.

Per 23rd Quarter QWP

Total Construction Projection (Elements 2 – 7, 9A & 10)	\$795,086
State Share of Projection	\$573,446
75% of State Share for Quarterly Advance	\$430,084

State Accumulated Credit Reported in 22nd QPR

Interest Earned on State Advanced Funding	\$132,949
State Share of Ag Lease Payments on FR Lands	\$196,970
State Share of Condemnation Settlements Less than Advance	\$141,653
Total State Funding Credits with TRLIA to Date	\$471,572

Net State Share Due (22nd Qtr True Up plus 23rd Qtr Advance) <i>Assumes no retention held</i>	\$4,643,043
---	--------------------

➤ **Detailed Quarterly Work Plan Budget Forecast**

The following tables present Element and Feature level details for this 24th Quarterly Work Plan.

Summary of TRLIA Quarterly Work Plan Budget

For Period January/February/March 2014

SUMMARY ALL ELEMENTS

Elements and Features	Revised Overall Budget [1]			Forecasted Expenses (through March 2012)				Forecasted Remaining Budget			Quarterly Forecast			Advance
	Total	State	Local	Total	State Share	Local Share	Local Share (after credit)	Total	State Share	Local Share	Total	State	Local	State Share
<i>Formula</i>	b	c* <small>*Based on Overall Workplan</small>	d = b-c	e <small>[2]</small>	Credit f <small>[3]</small>	Payments g <small>[4]</small>	h=e-f-g <small>*Not less than zero</small>	i=b-e	j=c-f-g	k=d-h	l	m=lx	n=l-m	o=m*75%
Quarterly Advance Request														
Element 2: Segment 2 New Levee	\$89,422,362	\$74,063,713	\$15,358,649	\$89,083,177	\$6,777,121	\$67,005,648	\$15,300,407	\$339,185	\$280,944	\$58,242	\$59,000	\$48,867	\$10,133	\$36,650
Element 3: Segment 2 Levee Tie Ins	\$7,684,448	\$6,364,613	\$1,319,835	\$7,684,448	\$0	\$6,364,612	\$1,319,836	\$0	\$2	-\$1	\$0	\$0	\$0	\$0
Element 4: Segment 2 Levee Degradation	\$16,524,427	\$13,686,291	\$2,838,136	\$16,524,427	\$0	\$13,686,287	\$0	\$0	\$3	-\$3	\$0	\$0	\$0	\$0
Element 5: Segment 3 Levee Improvement	\$13,103,230	\$9,172,261	\$3,930,969	\$12,965,713	\$3,155,224	\$5,920,775	\$3,889,714	\$137,517	\$96,262	\$41,255	\$16,000	\$11,200	\$4,800	\$8,400
Element 5A: Segment 3 Erosion Site 2	\$684,518	\$479,163	\$205,355	\$684,518	\$0	\$479,163	\$205,355	\$0	\$0	\$0	\$0	\$0	\$0	\$0
Element 6: Land Management	\$2,305,000	\$1,909,107	\$395,893	\$1,090,446	\$0	\$903,157	\$187,289	\$1,214,554	\$1,005,950	\$208,604	\$76,000	\$62,947	\$13,053	\$47,210
Element 7: PM & Overhead	\$6,263,840	\$4,780,533	\$1,483,307	\$6,083,640	\$1,464,186	\$3,178,835	\$1,440,619	\$180,200	\$137,512	\$42,688	\$31,944	\$24,379	\$7,564	\$18,284
Element 9: Segment 1 Levee Improvement	\$12,429,728	\$8,700,810	\$3,728,918	\$12,238,254	\$987,512	\$7,579,266	\$3,671,476	\$191,474	\$134,032	\$57,442	\$50,371	\$35,260	\$15,111	\$26,445
Element 9A: Segment 1 Crack Repair	\$575,000	\$402,500	\$172,500	\$507,433	\$0	\$355,203	\$152,230	\$67,567	\$47,297	\$20,270	\$0	\$0	\$0	\$0
Element 10: Project Closeout Efforts	\$100,000	\$76,320	\$23,680	\$23,089	\$0	\$11,797	\$11,292	\$76,911	\$64,523	\$12,388	\$10,000	\$7,632	\$2,368	\$5,724
Subtotal Elements 2 through 9A	\$148,992,554	\$119,558,991	\$29,433,563	\$146,862,055	\$12,384,043	\$105,472,947	\$26,166,926	\$2,130,499	\$1,702,001	\$428,497	\$243,315	\$190,284	\$53,030	\$142,713
Totals for Quarter Eligible for 75% Advance of State Share														
Real Estate Forecast for Quarter														
	Cumulative Estimated Expenses (through March)													
Element 1: Land Acquisition	\$42,024,165	\$34,693,564	\$7,330,601	\$41,292,815	\$3,022,287	\$31,140,003	\$7,130,525	\$731,350	\$531,274	\$200,076	\$0	\$0	\$0	\$0
Element 8: Segment 1 Land Acquisition	\$630,272	\$441,190	\$189,082	\$169,041	\$47,728	\$70,601	\$50,712	\$461,231	\$322,862	\$138,369	\$300,000	\$210,000	\$90,000	\$0
Subtotal Real Estate Forecast	\$42,654,437	\$35,134,755	\$7,519,682	\$41,461,856	\$3,070,016	\$31,210,604	\$7,181,237	\$1,192,581	\$854,135	\$338,445	\$300,000	\$210,000	\$90,000	\$0
Total Elements 1 through 9A	\$191,646,990	\$154,693,745	\$36,953,245	\$188,323,911	\$15,454,058	\$136,683,550	\$33,348,163	\$3,323,079	\$2,556,137	\$766,943	\$543,315	\$400,284	\$143,030	\$0

Local Credit Reconciliation

Total Local Share of Expenses this Quarter	\$53,030 (From Above)
Total Approved Local Credit	\$15,454,060 (Based on Approval Letter)
Use of Local Credit	
Use of Local Credit for Real Estate to Date	-\$5,282,078
Payments of Credit w/ 1st Quarterly Advance (Per Invoice Advance - 1)	-\$2,461,666
Payments of Credit w/ 2nd Quarterly Advance (Per Revised Invoice Advance-2)	-\$1,469,507
Payments of Credit w/2nd Quarter True-Up	-\$3,812,451
Payments of Credit w/3rd Quarterly Advance	-\$567,189
Payments of Credit w/3rd Quarterly Advance (Update based on Addtl. Costs)	-\$825,928
Payments for 9th and 10th Quarter Progress Reports	-\$1,035,241
Use of Local Credit	-\$15,454,060
Total Local Credit Used	-\$15,454,060
Remaining Local Credit	\$0
Requested Local Credit to be Paid with Advance	\$0 (No Local Credit Remaining)

24QSumm

[1] From Exhibit A of the OAWP Budget Included as part of the Draft Second Amendment to the Funding Agreement Dated May 24, 2012

[2] Reflects costs incurred through submitted 22nd QPR (December '13) with estimates of expenses forecasted in 23rd QWP. Adjustments have been made as necessary for actual expenses incurred and schedule/scope of work changes.

[3] Amount paid from credit.

[4] Represents State Share of actual expenses through December 2013 plus forecasted amount (ref. Note 2).

TRLIA Quarterly Work Plan Budget

For Period January/February/March 2014

ELEMENT 1

Elements and Features	State Share	Revised Overall Budget [1]			Cumulative Expenses (through Dec. 2013)				Forecasted Remaining Budget			24th Quarterly Forecast				
		Total	State	Local	Total	State Share Amounts		Local Share	Total	State Share	Local Share	% of Total Budget Remaining	Total	State	Local	% of Remaining Budget
		a	b	c*	d = b-c	e	Credit	Payment	h=e-f-g	i=b-e	j=c-f-g	k=d-h		l	m=lx	n=l-m
Formula				[2]	[3]	[4]										
Element 1: Feather River EIP Land Acquisition (see real estate Acquisition Plan)																
Feature 1 - Feather Segment : 82.8246%		\$41,144,743	\$34,077,969	\$7,066,774	\$40,994,082	\$2,983,247	\$30,969,930	\$7,040,905	\$150,661	\$124,791	\$25,869	0%	\$0	\$0	\$0	0%
Feature 2 - Feather Segment : 70.0000%		\$879,422	\$615,595	\$263,827	\$298,733	\$39,040	\$170,073	\$89,620	\$580,689	\$406,483	\$174,207	66%	\$0	\$0	\$0	0%
Subtotal Element 1		\$42,024,165	\$34,693,564	\$7,330,601	\$41,292,815	\$3,022,287	\$31,140,003	\$7,130,525	\$731,350	\$531,274	\$200,076	2%	\$0	\$0	\$0	0%

"24QElem1"

[1] From Exhibit A of the OAWP Budget Included as part of the Draft Second Amendment to the Funding Agreement Dated May 24, 2012

[2] Reflects costs incurred through submitted 22nd QPR (December '13) with estimates of expenses forecasted in 23rd QWP. Adjustments have been made as necessary for actual expenses incurred and schedule/scope of work changes.

[3] Amount paid from credit.

[4] Represents State Share of actual expenses through December 2013 plus forecasted amount (ref. Note 2).

TRLIA Quarterly Work Plan Budget
For Period January/February/March 2014

ELEMENT 8

Elements and Features	State Share Percentag e	Revised Overall Budget [1]			Cumulative Expenses (through Dec. 2013)				Forecasted Remaining Budget			% of Total Budget Remaining	24th Quarterly Forecast			% of Remainin g Budget
		Total	State	Local	Total	State Share Amounts		Local Share	Total	State Share	Local Share		Total	State	Local	
		a	b	c* <small>*Based on Overall Workplan</small>	d = b-c	e	Credit f	Payment g	h=e-f-g	i=b-e	j=c-f-g		k=d-h	l	m=lxa	
<i>Formula</i>	a	b	c*	d = b-c	e	Credit f	Payment g	h=e-f-g	i=b-e	j=c-f-g	k=d-h	l	m=lxa	n=l-m		
Element 8: Segment 1 Feather River EIP Land Acquisition																
Feature 1 - Feather Segment	70.0000%	\$630,272	\$441,190	\$189,082	\$169,041	\$47,728	\$70,601	\$50,712	\$461,231	\$322,862	\$138,369	73%	\$300,000	\$210,000	\$90,000	65%
Subtotal Element 8		\$630,272	\$441,190	\$189,082	\$169,041	\$47,728	\$70,601	\$50,712	\$461,231	\$322,862	\$138,369	73%	\$300,000	\$210,000	\$90,000	65%

24QElem8

[1] From Exhibit A of the OAWP Budget Included as part of the Draft Second Amendment to the Funding Agreement Dated May 24, 2012

[2] Reflects costs incurred through submitted 22nd QPR (December '13) with estimates of expenses forecasted in 23rd QWP. Adjustments have been made as necessary for actual expenses incurred and schedule/scope of work changes.

[3] Amount paid from credit.

[4] Represents State Share of actual expenses through December 2013 plus forecasted amount (ref. Note 2).

TRLIA Quarterly Work Plan Budget
For Period January/February/March 2014

ELEMENT 2

Elements and Features	State Share Percentage	Revised Overall Budget [1]			Cumulative Expenses (through Dec. 2013)			Forecasted Remaining Budget			% of Total Budget Remaining	24th Quarterly Forecast			% of Remaining Budget	
		Total	State	Local	Total	State Share	Local Share	Total	State Share	Local Share		Total	State	Local		
		a	b	c* <small>*Based on Overall Workplan</small>	d = b-c	e	Credit f	Payments g	h=e-f-g <small>*Not less than zero</small>	i=b-e		j=c-f-g	k=d-h	l		m=lx
Formula																
Element 2: Feather River Segment 2 new levee																
(Excludes Levee Tie Ins and Existing Levee Degradation)																
2.1.1: Design	82.8246%	\$6,604,016	\$5,469,750	\$1,134,266	\$6,604,016	\$4,533,871	\$935,878	\$1,134,267	\$0	\$1	-\$1	0%	\$0	\$0	\$0	0%
2.1.2: Permitting	82.8246%	\$3,175,659	\$2,630,226	\$545,433	\$3,062,604	\$1,204,454	\$1,332,134	\$526,015	\$113,056	\$93,638	\$19,418	4%	\$9,000	\$7,454	\$1,546	8%
2.1.3: Right of Way Support	82.8246%	\$6,218,380	\$5,150,348	\$1,068,032	\$5,920,032	\$940,436	\$3,962,806	\$1,016,790	\$298,347	\$247,106	\$51,241	5%	\$50,000	\$41,412	\$8,588	17%
2.2: Construction Management	82.8246%	\$7,366,914	\$6,101,617	\$1,265,297	\$7,366,914	\$14,362	\$6,087,254	\$1,265,298	\$0	\$2	-\$1	0%	\$0	\$0	\$0	0%
2.3 Construction of Setback																
2.3.1: Foundation	82.8246%	\$23,606,069	\$19,551,632	\$4,054,437	\$23,606,069	\$0	\$19,551,628	\$4,054,441	\$0	\$4	-\$4	0%	\$0	\$0	\$0	0%
2.3.2: Embankment	82.8246%	\$34,127,788	\$28,266,204	\$5,861,584	\$34,127,788	\$42,486	\$28,223,711	\$5,861,590	\$0	\$6	-\$6	0%	\$0	\$0	\$0	0%
2.3.3: Relocation of PG&E Fac	82.8246%	\$2,605,433	\$2,157,939	\$447,494	\$2,605,433	\$41,412	\$2,116,527	\$447,494	\$0	\$0	-\$1	0%	\$0	\$0	\$0	0%
2.4: Environmental & Cultural Mitigation																
2.4.1: Mitigation & Restoration	82.8246%	\$5,500,000	\$4,555,353	\$944,647	\$5,769,892	\$99	\$4,778,790	\$991,003	-\$269,892	-\$223,536	-\$46,356	-5%	\$0	\$0	\$0	0%
2.4.2: Cultural Mitigation/Sectic	82.8246%	\$50,000	\$41,412	\$8,588	\$0	\$0	\$0	\$0	\$50,000	\$41,412	\$8,588	100%	\$0	\$0	\$0	0%
2.5: Operation and Maintenance	82.8246%	\$168,103	\$139,231	\$28,872	\$20,429	\$0	\$16,920	\$3,509	\$147,674	\$122,311	\$25,364	88%	\$0	\$0	\$0	0%
Subtotal Element 2		\$89,422,362	\$74,063,713	\$15,358,649	\$89,083,177	\$6,777,121	\$67,005,648	\$15,300,407	\$339,185	\$280,944	\$58,242	0%	\$59,000	\$48,867	\$10,133	17%

24QElem2

[1] From Exhibit A of the OAWP Budget Included as part of the Draft Second Amendment to the Funding Agreement Dated May 24, 2012

[2] Reflects costs incurred through submitted 22nd QPR (December '13) with estimates of expenses forecasted in 23rd QWP. Adjustments have been made as necessary for actual expenses incurred and schedule/scope of work changes.

[3] Amount paid from credit.

[4] Represents State Share of actual expenses through December 2013 plus forecasted amount (ref. Note 2).

TRLIA Quarterly Work Plan Budget

For Period January/February/March 2014

ELEMENT 3

Elements and Features	State Share Percentage	Revised Overall Budget [1]			Cumulative Expenses (through Dec. 2013)			Forecasted Remaining Budget			% of Total Budget Remaining	24th Quarterly Forecast			% of Remaining Budget	
		Total	State	Local	Total	State Share	Local Share	Total	State Share	Local Share		Total	State	Local		
		a	b	c* <small>*Based on Overall Workplan</small>	d = b-c	e	Credit f	Payments g	Local Share (after credit) h=e-f-g	i=b-e		j=c-f-g	k=d-h	l		m=lxa
Formula					[2]	[3]	[4]	<small>*Not less than zero</small>								
Element 3: Feather River Segment 2 Levee Tie Ins																
3.1.1: Foundation	82.8246%	\$5,146,426	\$4,262,507	\$883,919	\$5,146,426	\$0	\$4,262,505	\$883,920	\$0	\$1	-\$1	0%	\$0	\$0	\$0	0%
3.1.2: Embankment	82.8246%	\$2,538,022	\$2,102,107	\$435,915	\$2,538,022	\$0	\$2,102,106	\$435,916	\$0	\$0	\$0	0%	\$0	\$0	\$0	0%
Subtotal Element 3		\$7,684,448	\$6,364,613	\$1,319,835	\$7,684,448	\$0	\$6,364,612	\$1,319,836	\$0	\$2	-\$1	0%	\$0	\$0	\$0	0%

24QElem3

[1] From Exhibit A of the OAWP Budget Included as part of the Draft Second Amendment to the Funding Agreement Dated May 24, 2012

[2] Reflects costs incurred through submitted 22nd QPR (December '13) with estimates of expenses forecasted in 23rd QWP. Adjustments have been made as necessary for actual expenses incurred and schedule/scope of work changes.

[3] Amount paid from credit.

[4] Represents State Share of actual expenses through December 2013 plus forecasted amount (ref. Note 2).

TRLIA Quarterly Work Plan Budget
For Period January/February/March 2014

ELEMENT 4

Elements and Features	State Share Percentage	Revised Overall Budget [1]			Cumulative Expenses (through Dec. 2013)			Forecasted Remaining Budget			% of Total Budget Remaining	24th Quarterly Forecast			% of Remaining Budget	
		Total	State	Local	Total	State Share	Local Share (after credit)	Total	State Share	Local Share		Total	State	Local		
		a	b	c* <small>*Based on Overall Workplan</small>	d = b-c	e	f <small>Credit</small>	g <small>Payments</small>	h=e-f-g	i=b-e		j=c-f-g	k=d-h	l		m=lxa
<i>Formula</i>					[2]	[3]	[4]									
Element 4: Feather River Segment 2 Levee Degradation																
4.1: Construction	82.8246%	\$16,524,427	\$13,686,291	\$2,838,136	\$16,524,427	\$0	\$13,686,287	\$2,838,139	\$0	\$3	-\$3	0%	\$0	\$0	\$0	0%
Subtotal Element 4		\$16,524,427	\$13,686,291	\$2,838,136	\$16,524,427	\$0	\$13,686,287	\$0	\$0	\$3	-\$3	0%	\$0	\$0	\$0	0%

24QElem4

[1] From Exhibit A of the OAWP Budget Included as part of the Draft Second Amendment to the Funding Agreement Dated May 24, 2012
 [2] Reflects costs incurred through submitted 22nd QPR (December '13) with estimates of expenses forecasted in 23rd QWP. Adjustments have been made as necessary for actual expenses incurred and schedule/scope of work changes.
 [3] Amount paid from credit.
 [4] Represents State Share of actual expenses through December 2013 plus forecasted amount (ref. Note 2).

TRLIA Quarterly Work Plan Budget

For Period January/February/March 2014

ELEMENT 5

Elements and Features	State Share Percentage	Revised Overall Budget [1]			Cumulative Expenses (through Dec. 2013)			Forecasted Remaining Budget			% of Total Budget Remaining	24th Quarterly Forecast			% of Remaining Budget	
		Total	State	Local	Total	State Share	Local Share	Total	State Share	Local Share		Total	State	Local		
		a	b	c* <small>*Based on Overall Workplan</small>	d = b-c	e	f <small>Credit</small>	g <small>Payments</small>	h=e-f-g <small>(after credit)</small>	i=b-e		j=c-f-g	k=d-h	l		m=lx
Formula					[2]	[3]	[4]									
Element 5: Feather River Segment 3 levee improvement																
5.1.1: Design	70.0000%	\$937,396	\$656,177	\$281,219	\$937,396	\$582,099	\$74,079	\$281,219	\$0	\$0	\$0	0%	\$0	\$0	\$0	0%
5.1.2: Permitting	70.0000%	\$303,096	\$212,167	\$90,929	\$408,214	\$91,124	\$194,626	\$122,464	-\$105,119	-\$73,583	-\$31,536	-35%	\$0	\$0	\$0	0%
5.1.3: Right of Way Support	70.0000%	\$893,821	\$625,674	\$268,146	\$936,528	\$136,399	\$519,170	\$280,958	-\$42,707	-\$29,895	-\$12,812	-5%	\$6,000	\$4,200	\$1,800	-14%
5.2: Construction Management	70.0000%	\$1,170,663	\$819,464	\$351,199	\$1,271,673	\$438,350	\$451,821	\$381,502	-\$101,010	-\$70,707	-\$30,303	-9%	\$10,000	\$7,000	\$3,000	-10%
5.3 Construction	70.0000%	\$9,769,203	\$6,838,442	\$2,930,761	\$9,410,218	\$1,907,252	\$4,679,901	\$2,823,065	\$358,984	\$251,289	\$107,695	4%	\$0	\$0	\$0	0%
5.4: O&M Manual	70.0000%	\$29,052	\$20,336	\$8,716	\$1,683	\$0	\$1,178	\$505	\$27,369	\$19,158	\$8,211	94%	\$0	\$0	\$0	0%
Subtotal Element 5		\$13,103,230	\$9,172,261	\$3,930,969	\$12,965,713	\$3,155,224	\$5,920,775	\$3,889,714	\$137,517	\$96,262	\$41,255	1%	\$16,000	\$11,200	\$4,800	12%

24QElem5

[1] From Exhibit A of the OAWP Budget Included as part of the Draft Second Amendment to the Funding Agreement Dated May 24, 2012

[2] Reflects costs incurred through submitted 22nd QPR (December '13) with estimates of expenses forecasted in 23rd QWP. Adjustments have been made as necessary for actual expenses incurred and schedule/scope of work changes.

[3] Amount paid from credit.

[4] Represents State Share of actual expenses through December 2013 plus forecasted amount (ref. Note 2).

TRLIA Quarterly Work Plan Budget
For Period January/February/March 2014

ELEMENT 5A

Elements and Features	State Share Percentage	Revised Overall Budget [1]			Cumulative Expenses (through Dec. 2013)			Forecasted Remaining Budget			% of Total Budget Remaining	24th Quarterly Forecast			% of Remaining Budget	
		Total	State	Local	Total	State Share	Local Share	Total	State Share	Local Share		Total	State	Local		
		a	b	c* <small>*Based on Overall Workplan</small>	d = b-c	e	f <small>Credit</small>	g <small>Payments</small>	h=e-f-g <small>(after credit)</small>	i=b-e		j=c-f-g	k=d-h	l		m=lx
Formula					[2]	[3]	[4]									
Element 5A: Feather River Segment 3 Erosion Site 2																
5A.1.1 - Design	70.0000%	\$53,962	\$37,773	\$16,189	\$53,962	\$0	\$37,773	\$16,189	\$0	\$0	\$0	0%	\$0	\$0	\$0	0%
5A.1.2 - Permitting	70.0000%	\$111,341	\$77,939	\$33,402	\$111,341	\$0	\$77,939	\$33,402	\$0	\$0	\$0	0%	\$0	\$0	\$0	0%
5A.1.3 - ROW Support	70.0000%	\$5,830	\$4,081	\$1,749	\$5,830	\$0	\$4,081	\$1,749	\$0	\$0	\$0	0%	\$0	\$0	\$0	0%
5A.2 - Construction Manager	70.0000%	\$31,634	\$22,144	\$9,490	\$31,634	\$0	\$22,144	\$9,490	\$0	\$0	\$0	0%	\$0	\$0	\$0	0%
5A.3 - Construction	70.0000%	\$481,751	\$337,226	\$144,525	\$481,751	\$0	\$337,226	\$144,525	\$0	\$0	\$0	0%	\$0	\$0	\$0	0%
5A.4 - O&M manual addendum	70.0000%	\$0	\$0	\$0	\$0	\$0	\$0	\$0	\$0	\$0	\$0	0%	\$0	\$0	\$0	0%
Subtotal Element 5A		\$684,518	\$479,163	\$205,355	\$684,518	\$0	\$479,163	\$205,355	\$0	\$0	\$0	0%	\$0	\$0	\$0	0%

24QElem5A

[1] From Exhibit A of the OAWP Budget Included as part of the Draft Second Amendment to the Funding Agreement Dated May 24, 2012

[2] Reflects costs incurred through submitted 22nd QPR (December '13) with estimates of expenses forecasted in 23rd QWP. Adjustments have been made as necessary for actual expenses incurred and schedule/scope of work changes.

[3] Amount paid from credit.

[4] Represents State Share of actual expenses through December 2013 plus forecasted amount (ref. Note 2).

TRLIA Quarterly Work Plan Budget
For Period January/February/March 2014

ELEMENT 6

Elements and Features	State Share Percentage	Revised Overall Budget [1]			Cumulative Expenses (through Dec. 2013)			Forecasted Remaining Budget			% of Total Budget Remaining	24th Quarterly Forecast			% of Remaining Budget	
		Total	State	Local	Total	State Share	Local Share (after credit)	Total	State Share	Local Share		Total	State	Local		
<i>Formula</i>	<i>a</i>	<i>b</i>	<i>c*</i> <small>*Based on Overall Workplan</small>	<i>d = b-c</i>	<i>e</i>	<i>f</i> <small>Credit</small>	<i>g</i> <small>Payments</small>	<i>h=e-f-g</i> <small>*Not less than zero</small>	<i>i=b-e</i>	<i>j=c-f-g</i>	<i>k=d-h</i>		<i>l</i>	<i>m=lx</i>	<i>n=l-m</i>	
					[2]	[3]	[4]									
Element 6: Feather River Land Management																
Feature 6.1: Env. Maintenance	82.8246%	\$210,000	\$173,932	\$36,068	\$118,914	\$0	\$98,490	\$20,424	\$91,086	\$75,442	\$15,644	43%	\$6,000	\$4,969	\$1,031	7%
Feature 6.2: Lease Back	82.8246%	\$25,000	\$20,706	\$4,294	\$4,567	\$0	\$3,782	\$784	\$20,433	\$16,924	\$3,509	82%	\$0	\$0	\$0	0%
Feature 6.3: Land Maintenance	82.8246%	\$2,070,000	\$1,714,469	\$355,531	\$966,965	\$0	\$800,885	\$166,080	\$1,103,035	\$913,584	\$189,450	53%	\$70,000	\$57,977	\$12,023	6%
Subtotal Element 6		\$2,305,000	\$1,909,107	\$395,893	\$1,090,446	\$0	\$903,157	\$187,289	\$1,214,554	\$1,005,950	\$208,604	53%	\$76,000	\$62,947	\$13,053	6%

24QElem6

[1] From Exhibit A of the OAWP Budget Included as part of the Draft Second Amendment to the Funding Agreement Dated May 24, 2012

[2] Reflects costs incurred through submitted 22nd QPR (December '13) with estimates of expenses forecasted in 23rd QWP. Adjustments have been made as necessary for actual expenses incurred and schedule/scope of work changes.

[3] Amount paid from credit.

[4] Represents State Share of actual expenses through December 2013 plus forecasted amount (ref. Note 2).

TRLIA Quarterly Work Plan Budget

For Period January/February/March 2014

ELEMENT 7

Elements and Features	State Share Percentage	Revised Overall Budget [1]			Cumulative Expenses (through Dec. 2013)				Forecasted Remaining Budget			% of Total Budget Remaining	24th Quarterly Forecast			% of Remaining Budget
		Total	State	Local	Total	State Share		Local Share	Total	State Share	Local Share		Total	State	Local	
		a	b	c* <small>*Based on Overall Workplan</small>	d = b-c	e	Credit f	Payments g	(after credit) h=e-f-g	i=b-e	j=c-f-g		k=d-h	l	m=lx	
Formula				[2]	[3]	[4]	<small>*Not less than zero</small>									
Element 7: Project Management, Legal, Community Relations support, Land Management, and Overhead																
Feature 7.1: Salaries	76.3198%	\$1,464,737	\$1,117,885	\$346,853	\$1,530,634	\$373,722	\$794,455	\$362,457	-\$65,897	-\$50,292	-\$15,605	-4%	\$14,000	\$10,685	\$3,315	-21%
Feature 7.2: Consulting	76.3198%	\$1,864,571	\$1,423,020	\$441,551	\$1,830,639	\$461,956	\$935,184	\$433,499	\$33,932	\$25,880	\$8,052	2%	\$9,000	\$6,869	\$2,131	27%
Feature 7.3: Legal	76.3198%	\$1,270,497	\$969,641	\$300,856	\$1,284,512	\$381,323	\$599,014	\$304,175	-\$14,014	-\$10,696	-\$3,319	-1%	\$7,000	\$5,342	\$1,658	-50%
Feature 7.4: Travel	76.3198%	\$10,827	\$8,263	\$2,564	\$8,519	\$3,933	\$2,568	\$2,017	\$2,309	\$1,762	\$547	21%	\$0	\$0	\$0	0%
Feature 7.5: General	76.3198%	\$550,756	\$420,336	\$130,420	\$336,624	\$60,919	\$195,991	\$79,713	\$214,132	\$163,425	\$50,707	39%	\$1,800	\$1,374	\$426	1%
Feature 7.6: Insurance	76.3198%	\$1,056,375	\$806,223	\$250,152	\$1,062,155	\$174,173	\$636,461	\$251,521	-\$5,780	-\$4,411	-\$1,369	-1%	\$0	\$0	\$0	0%
Feature 7.7: Travel/Vehicle	76.3198%	\$27,273	\$20,815	\$6,458	\$23,868	\$6,230	\$11,985	\$5,652	\$3,405	\$2,599	\$806	12%	\$144	\$110	\$34	4%
Feature 7.8: Memberships	76.3198%	\$18,804	\$14,351	\$4,453	\$6,691	\$1,930	\$3,176	\$1,584	\$12,113	\$9,245	\$2,868	64%	\$0	\$0	\$0	0%
Subtotal Element 7		\$6,263,840	\$4,780,533	\$1,483,307	\$6,083,640	\$1,464,186	\$3,178,835	\$1,440,619	\$180,200	\$137,512	\$42,688	3%	\$31,944	\$24,379	\$7,564	18%

24QElem7

[1] From Exhibit A of the OAWP Budget Included as part of the Draft Second Amendment to the Funding Agreement Dated May 24, 2012

[2] Reflects costs incurred through submitted 22nd QPR (December '13) with estimates of expenses forecasted in 23rd QWP. Adjustments have been made as necessary for actual expenses incurred and schedule/scope of work changes.

[3] Amount paid from credit.

[4] Represents State Share of actual expenses through December 2013 plus forecasted amount (ref. Note 2).

TRLIA Quarterly Work Plan Budget

For Period January/February/March 2014

ELEMENT 9

Elements and Features	State Share Percentage	Revised Overall Budget [1]			Cumulative Expenses (through Dec. 2013)				Forecasted Remaining Budget			% of Total Budget Remaining	24th Quarterly Forecast			% of Remaining Budget
		Total	State	Local	Total	State Share	Local Share	Total	State Share	Local Share	Total		State	Local		
		a	b	c* <small>*Based on Overall Workplan</small>	d = b-c	e	f <small>Credit</small>	g <small>Payments (after credit)</small>	h=e-f-g <small>*Not less than zero</small>	i=b-e	j=c-f-g		k=d-h	l	m=lx	
Element 9: Feather River Segment 1 levee improvement																
Feature 9.1.1 - Design	70.0000%	\$1,185,322	\$829,725	\$355,597	\$1,192,319	\$740,120	\$94,503	\$357,696	-\$6,997	-\$4,898	-\$2,099	-1%	\$0	\$0	\$0	0%
Feature 9.1.2 - Permitting	70.0000%	\$295,934	\$207,154	\$88,780	\$261,502	\$112,717	\$70,335	\$78,451	\$34,432	\$24,102	\$10,330	12%	\$28,371	\$19,860	\$8,511	82%
Feature 9.1.3 - ROW Support	70.0000%	\$475,781	\$333,047	\$142,734	\$332,889	\$0	\$233,023	\$99,867	\$142,891	\$100,024	\$42,867	30%	\$22,000	\$15,400	\$6,600	15%
Feature 9.2 - Construction Mgt.	70.0000%	\$1,381,680	\$967,176	\$414,504	\$1,373,820	\$132,417	\$829,257	\$412,146	\$7,860	\$5,502	\$2,358	1%	\$0	\$0	\$0	0%
Feature 9.3 - Construction	70.0000%	\$9,078,414	\$6,354,890	\$2,723,524	\$9,076,695	\$2,258	\$6,351,429	\$2,723,009	\$1,719	\$1,203	\$516	0%	\$0	\$0	\$0	0%
Feature 9.4 - O&M Segment 1	70.0000%	\$12,597	\$8,818	\$3,779	\$1,029	\$0	\$720	\$309	\$11,569	\$8,098	\$3,471	92%	\$0	\$0	\$0	0%
Subtotal Element 9		\$12,429,728	\$8,700,810	\$3,728,918	\$12,238,254	\$987,512	\$7,579,266	\$3,671,476	\$191,474	\$134,032	\$57,442	2%	\$50,371	\$35,260	\$15,111	26%

24QElem9

[1] From Exhibit A of the OAWP Budget Included as part of the Draft Second Amendment to the Funding Agreement Dated May 24, 2012

[2] Reflects costs incurred through submitted 22nd QPR (December '13) with estimates of expenses forecasted in 23rd QWP. Adjustments have been made as necessary for actual expenses incurred and schedule/scope of work changes.

[3] Amount paid from credit.

[4] Represents State Share of actual expenses through December 2013 plus forecasted amount (ref. Note 2).

TRLIA Quarterly Work Plan Budget

For Period January/February/March 2014

ELEMENT 9A

Elements and Features	State Share Percentage	Revised Overall Budget [1]			Cumulative Expenses (through Dec. 2013)			Forecasted Remaining Budget			% of Total Budget Remaining	24th Quarterly Forecast			% of Remaining Budget	
		Total	State	Local	Total	State Share	Local Share	Total	State Share	Local Share		Total	State	Local		
		a	b	c* <small>*Based on Overall Workplan</small>	d = b-c	e	Credit f	Payments g	h=e-f-g <small>*Not less than zero</small>	i=b-e		j=c-f-g	k=d-h	l		m=lx
Element 9A: Feather River Segment 1 Crack Repair																
Feature 1.1 - Engineering, Desi	70.0000%	\$125,000	\$87,500	\$37,500	\$75,314	\$0	\$52,720	\$22,594	\$49,686	\$34,780	\$14,906	40%	\$0	\$0	\$0	0%
Feature 1.2 - Right of Way Supr	70.0000%	\$0	\$0	\$0	\$0	\$0	\$0	\$0	\$0	\$0	\$0	0%	\$0	\$0	\$0	0%
Feature 2 - Construction	70.0000%	\$440,000	\$308,000	\$132,000	\$432,119	\$0	\$302,483	\$129,636	\$7,881	\$5,517	\$2,364	2%	\$0	\$0	\$0	0%
Feature 3 - Operations & Mainte	70.0000%	\$10,000	\$7,000	\$3,000	\$0	\$0	\$0	\$0	\$10,000	\$7,000	\$3,000	100%	\$0	\$0	\$0	0%
Subtotal Element 9A		\$575,000	\$402,500	\$172,500	\$507,433	\$0	\$355,203	\$152,230	\$67,567	\$47,297	\$20,270	12%	\$0	\$0	\$0	0%

24QElem9A

[1] From Exhibit A of the OAWP Budget Included as part of the Draft Second Amendment to the Funding Agreement Dated May 24, 2012

[2] Reflects costs incurred through submitted 22nd QPR (December '13) with estimates of expenses forecasted in 23rd QWP. Adjustments have been made as necessary for actual expenses incurred and schedule/scope of work changes.

[3] Amount paid from credit.

[4] Represents State Share of actual expenses through December 2013 plus forecasted amount (ref. Note 2).

TRLIA Quarterly Work Plan Budget

For Period January/February/March 2014

ELEMENT 10

Elements and Features	State Share Percentage	Revised Overall Budget [1]			Cumulative Expenses (through Dec. 2013)			Forecasted Remaining Budget			% of Total Budget Remaining	24th Quarterly Forecast			% of Remaining Budget	
		Total	State	Local	Total	State Share	Local Share	Total	State Share	Local Share		Total	State	Local		
		a	b	c*	d = b-c	e	Credit f	Payments g	h=e-f-g	i=b-e		j=c-f-g	k=d-h	l		m=lx
<i>Formula</i>			<small>*Based on Overall Workplan</small>		[2]	[3]	[4]	<small>*Not less than zero</small>								
Element 10: Project Closeout Efforts																
Feature 1.1 - Engineering, Desi:	76.3198%	\$100,000	\$76,320	\$23,680	\$23,089	\$0	\$11,797	\$11,292	\$76,911	\$64,523	\$12,388	77%	\$10,000	\$7,632	\$2,368	13%
Subtotal Element 10		\$100,000	\$76,320	\$23,680	\$23,089	\$0	\$11,797	\$11,292	\$76,911	\$64,523	\$12,388	77%	\$10,000	\$7,632	\$2,368	13%

"24QElem9A"

[1] From Exhibit A of the OAWP Budget Included as part of the Draft Second Amendment to the Funding Agreement Dated May 24, 2012

[2] Reflects costs incurred through submitted 22nd QPR (December '13) with estimates of expenses forecasted in 23rd QWP. Adjustments have been made as necessary for actual expenses incurred and schedule/scope of work changes.

[3] Amount paid from credit.

[4] Represents State Share of actual expenses through December 2013 plus forecasted amount (ref. Note 2).

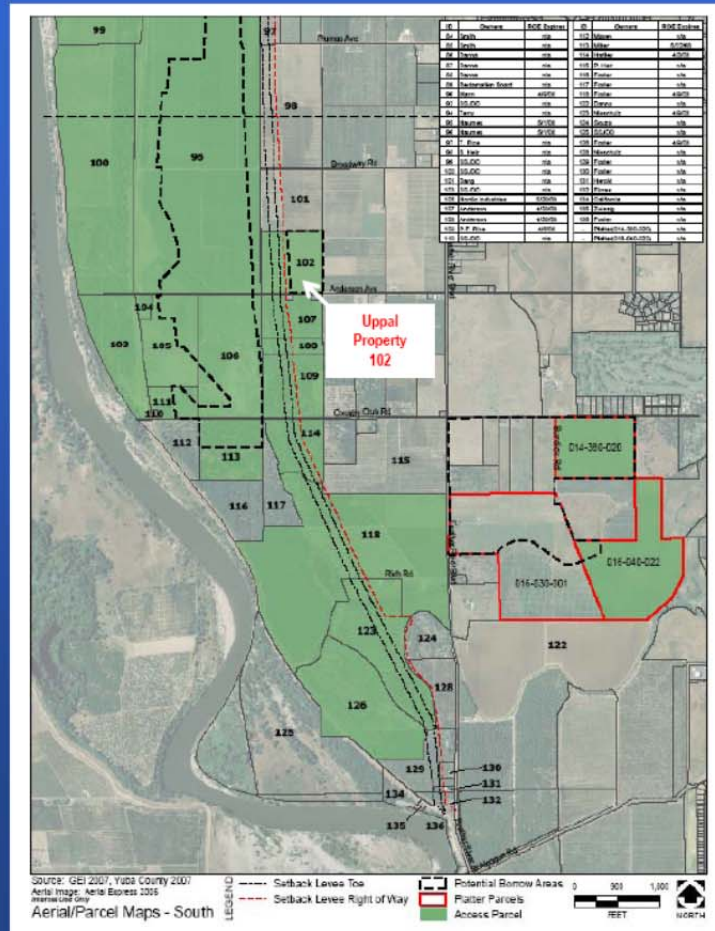
- **A discussion on how the projected schedule compares to original or last reported schedule:**
 - As reflected in the 23rd QWP and again in this QWP the following Elements and Features to accommodate land transfer process: Element 1, Features 1 and 2; Element 2, Feature 1.3, Element 5, Feature 1.3; Element 6, Features 1,2,&3; Element 7, Features 1 through 7; Element 9, Feature 1.2; Element 10, Feature 1

Attachments

1. Uppal property graphics
2. Permit Status Update for Project Element 2, 3, 4, 5, 5A, 9, & 9A

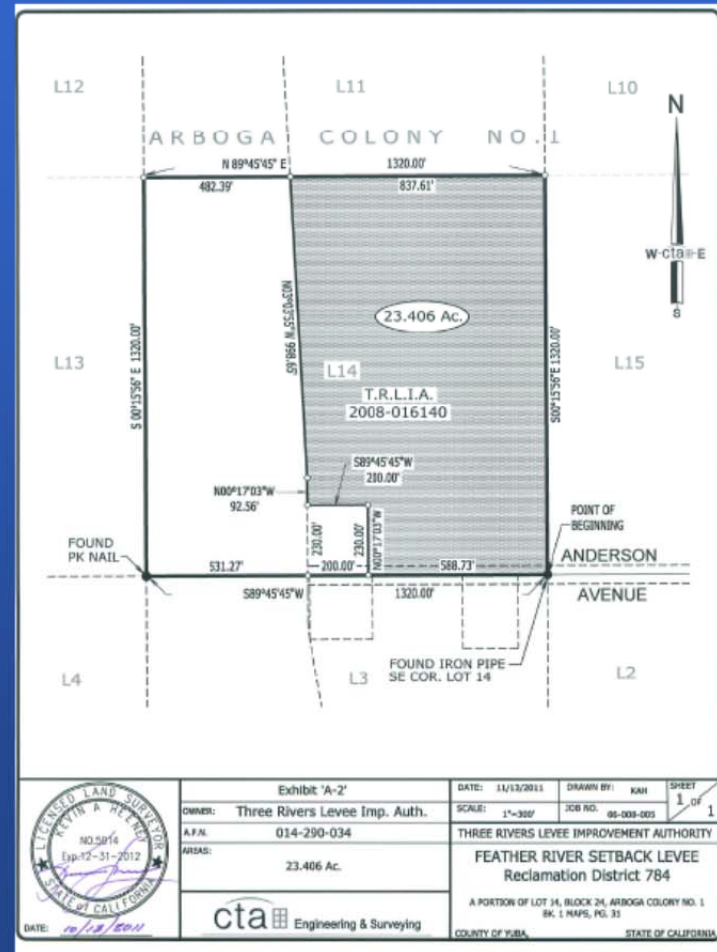
Attachment 1 – Uppal Property Graphics

UPPAL ACQUISITION



UPPAL SURPLUS PROPERTY

- 23.406 acres used during construction as staging and borrow area



Attachment 2 - Updated Permit Tables for Project Elements 2, 3, 4, 5, 5A, 9, & 9A

<u>Project Element 2</u> Applicable Permit and Environmental Documentation (refer to exhibit A of overall TRLIA work plan)			
PERMITTING AGENCY	PERMIT	ACTION DONE	STATUS/COMMENTS
The Central Valley Flood Protection Board	Encroachment Permits	Yes	The CVFPB General Manager issued a phased permit (#18227) on April 7, 2008 that allows construction in non-federal jurisdictional areas
California Central Valley Flood Protection Board	Encroachment Permit – Vegetated Wave Buffer	Yes	CVFPB approved permit #18556 at the February 2011 CVFPB meeting
California Central Valley Flood Protection Board	Encroachment Permit – Elderberry Mitigation Area	Yes	CVFPB approved permit #18637 at the March 25, 2011 CVFPB meeting
U.S. Fish and Wildlife Service	Endangered Species Act Compliance	Yes	Biological Opinion was approved on August 28, 2008
U.S. Fish and Wildlife Service	Endangered Species Act Compliance	Yes	Request for B.O. re-initiation was deemed unnecessary – letter sent to Corps on July 25, 2011
Native American Heritage Commission (NAHC)	Evaluation of effects on Native American burials or artifacts	Yes	Coordination with the NAHC was completed and MOA signed by all parties, on August 13, 2008
RWQCB, Region 5	National Pollution Discharge Elimination System (NPDES) Permit per Section 402 of the Clean Water Act	Yes	A NPDES permit (WDID # 5S5BC348901) was issued on 9/18/07 for Segments 1, 2, and 3.
Feather River Air Quality Management District (FRAQMD)	Authority to Construct	Yes	Contractor submitted Fugitive Dust Plan to FRAQMD
DFG	Streambed Alteration Agreement	Yes	The final Streambed Alteration Agreement was approved by DFG on January 2, 2008
Reclamation District 784 (RD 784)	Encroachment Permit	Yes	RD 784 is one of the project sponsors and coordination with RD 784 regarding levee encroachments is ongoing. RD 784 signed the

			application for the Central Valley Flood Protection Board encroachment permit with no objections.
Yuba County	Grading Permit	Yes	Grading permit was received in May 2008
State Mining and Geology Board (SMGB)	Reclamation Plan	Yes	The Reclamation Plan was approved and SMGB mining permit (No. 91-58-0026) issued for Ella and Platter/JTS Borrow sites on Sept 22, 2009.
CEQA	EIR	Yes	EIR certified by the TRLIA board on February 6, 2007 and a Notice of Determination filed with the State Clearinghouse (Number 2006062071) on February 8, 2007
CEQA	EIR Addendum #1	Yes	EIR addendum for offsite Platter Borrow site
CEQA	EIR Addendum #2	Yes	EIR addendum for Ella offsite borrow site
CEQA	EIR Addendum #3	Yes	EIR addendum for Vegetated Wave Buffer
Section 104 Credit Application	Future federal projects cost Sharing	Yes	CVFPB submitted a request on June 15, 2007 for \$154.3M Section 104 credit to the Sacramento District.
Section 104 Credit Approval (N/A)	Future federal projects cost sharing	Yes	At the March 21 CVFPB meeting DWR stated it would waive the need for 104 credits – DWR waiver letter issued on May 2, 2008

Project Element 3 Applicable Permit and Environmental Documentation (refer to exhibit A of overall TRLIA work plan)

PERMITTING AGENCY	PERMIT	Action Done	STATUS/COMMENTS
The Central Valley Flood Protection Board	Encroachment Permits	Yes	The CVFPB General Manager issued a phased permit (#18227) on April 7, 2008. The permit has two parts: Part A – Project Element 2 work to be done outside of jurisdictional waters of the U.S., and Part B – Project Element 3 work to be within jurisdictional waters of the U.S.
U.S. Army Corps of Engineers (Corps)	Section 10 Permit	Yes	Navigable waterways not affected
Corps	Section 404 Permit	Yes	Corps of Engineers signed the Feather

			River Setback Levee Environmental Impact Statement 404 permit Record of Decision on December 8, 2008 and the issued the final Feather River Setback 404 permit on December 15, 2008.
Corps	408 approval of project levee alteration	Yes	Corps of Engineers signed the Feather River Setback Levee Environmental Impact Statement 408 Authorization Record of Decision on December 8, 2008 and issued The Feather River Setback 408 Authorization on December 8, 2008.
Corps	Wetlands Delineation	Yes	Completed March 11, 2008
Corps	Wetlands Delineation	Yes	Amended September 30, 2008
Regional Water Quality Control Board (RWQCB); Central Valley Region (Region 5)	Section 401 Water Quality Certification	Yes	The Regional Water Quality Control Board signed the Section 401 Water Quality permit on November 24, 2008. Copy available on the
RWQCB, Region 5	National Pollution Discharge Elimination System (NPDES) Permit per Section 402 of the Clean Water Act	Yes	A NPDES permit (WDID # 5S5BC348901) was issued on 9/18/07 for Segments 1, 2, and 3.
Feather River Air Quality Management District (FRAQMD)	Authority to Construct	Yes	Contractor submitted a Fugitive Dust Plan to the FRAQMD prior to initiating construction on Segment 2.
U.S. Fish and Wildlife Service	Endangered Species Act Compliance	Yes	Biological Opinion was approved on August 28, 2008
U.S. Fish and Wildlife Service	Endangered Species Act Compliance	Yes	Request for B.O. re-initiation was deemed unnecessary – letter sent to Corps on July 25, 2011
National Marine Fisheries Service (NMFS)	Endangered Species Act Compliance	Yes	NMFS sent letter on December 13, 2007 concurring that setback levee is not likely to adversely affect any fish species under NMFS jurisdiction.
California Department of Fish and Game (DFG)	California Endangered Species Act Compliance	Yes	Section 2081 Permit received in August 2009
DFG	Streambed Alteration Agreement	Yes	The final Streambed Alteration Agreement was approved by DFG on January 2, 2008.
California State Lands Commission (SLC)	Encroachment Permit	Yes	All project facilities are outside SLC jurisdiction.
California Department of	Conversion of	Yes	No timberland conversion is required

Forestry	timberland to other uses.		for the project.
The Resources Agency	Cancellation of Williamson Act Contract	Yes	No Williamson Act contract cancellations are required to implement the project.
California Department of Transportation (Caltrans)	Encroachment on or across a State highway	Yes	Project facilities do not encroach onto a State highway. However, construction equipment will likely use State Route 70 (SR 70). Development and implementation of a traffic control plan is being coordinated with Caltrans.
Native American Heritage Commission (NAHC)	Evaluation of effects on Native American burials or artifacts	Yes	Coordination with the NAHC was completed and MOA signed by all parties, on August 13, 2008.
State Office of Historic Preservation (SHPO)	Evaluation of effects on historic and cultural resources	Yes	Coordination with the SHPO was completed and MOA signed by all parties, on August 13, 2008.
Reclamation District 784 (RD 784)	Encroachment Permit	Yes	RD 784 is one of the project sponsors and coordination with RD 784 regarding levee encroachments is ongoing. RD 784 signed the application for the Reclamation Board encroachment permit with no objections.
Yuba County	Grading Permit	Yes	Grading permit was received in May 2008
State Mining and Geology Board (SMGB)	Reclamation Plan	Yes	The Reclamation Plan was approved and SMGB mining permit (No. 91-58-0026) issued for Ella and Platter/JTS Borrow sites on Sept 22, 2009.
CEQA	EIR	Yes	EIR certified by the TRLIA board on February 6, 2007 and a Notice of Determination filed with the State Clearinghouse (Number 2006062071) on February 8, 2007.
NEPA	EIS	Yes	Corps of Engineers Finalized the Environmental Impact Statement and signed the Record of Decision on December 8, 2008.
Section 104 Credit	Future federal projects cost Sharing	Yes	The Section 104 credit for this Project Element was issued by the Corps on April 3, 2009

Project Element 4 Applicable Permit and Environmental Documentation (refer to exhibit A of overall TRLIA work plan)			
PERMITTING AGENCY	PERMIT	Action Done	STATUS/COMMENTS
California Central Valley Flood Protection Board	Encroachment Permit	Yes	CVFPB issued permit No 18430 at the July 2009 Board meeting
U.S. Army Corps of Engineers (Corps)	Section 10 Permit	Yes	Navigable waterways not affected
Corps	Section 404 Permit	Yes	Corps of Engineers signed the Feather River Setback Levee Environmental Impact Statement 404 permit Record of Decision on December 8, 2008 and the issued the final Feather River Setback 404 permit on December 15, 2008.
Corps	408 approval of project levee alteration	Yes	Corps of Engineers signed the Feather River Setback Levee Environmental Impact Statement 408 Authorization Record of Decision on December 8, 2008 and issued The Feather River Setback 408 Authorization on December 8, 2008.
Corps	Wetlands Delineation	Yes	Completed March 11, 2008
Corps	Wetlands Delineation	Yes	Amended September 30, 2008
Regional Water Quality Control Board (RWQCB); Central Valley Region (Region 5)	Section 401 Water Quality Certification	Yes	The Regional Water Quality Control Board signed the Section 401 Water Quality permit on November 24, 2008.
RWQCB, Region 5	National Pollution Discharge Elimination System (NPDES) Permit per Section 402 of the Clean Water Act	Yes	A NPDES permit (WDID # 5S5BC348901) was issued on 9/18/07 for Segments 1, 2, and 3.
Feather River Air Quality Management District (FRAQMD)	Authority to Construct	Yes	Contractor submitted a Fugitive Dust Plan to the FRAQMD prior to initiating construction on Segment 2.
U.S. Fish and Wildlife Service	Endangered Species Act Compliance	Yes	Biological Opinion was approved on August 28, 2008
U.S. Fish and Wildlife Service	Endangered Species Act Compliance	Yes	Request for B.O. re-initiation was deemed unnecessary – letter sent to Corps on July 25, 2011

National Marine Fisheries Service (NMFS)	Endangered Species Act Compliance	Yes	NMFS sent letter on December 13, 2007 concurring that setback levee is not likely to adversely affect any fish species under NMFS jurisdiction.
California Department of Fish and Game (DFG)	California Endangered Species Act Compliance	Yes	Section 2081 Permit received in August 2009
DFG	Streambed Alteration Agreement	Yes	The final Streambed Alteration Agreement was approved by DFG on January 2, 2008.
California State Lands Commission (SLC)	Encroachment Permit	Yes	All project facilities are outside SLC jurisdiction.
California Department of Forestry	Conversion of timberland to other uses.	Yes	No timberland conversion is required for the project.
The Resources Agency	Cancellation of Williamson Act Contract	Yes	No Williamson Act contract cancellations are required to implement the project.
California Department of Transportation (Caltrans)	Encroachment on or across a State highway	Yes	Project facilities do not encroach onto a State highway. However, construction equipment will likely use State Route 70 (SR 70). Development and implementation of a traffic control plan is being coordinated with Caltrans.
Native American Heritage Commission (NAHC)	Evaluation of effects on Native American burials or artifacts	Yes	Coordination with the NAHC was completed and MOA signed by all parties, on August 13, 2008.
State Office of Historic Preservation (SHPO)	Evaluation of effects on historic and cultural resources	Yes	Coordination with the SHPO was completed and MOA signed by all parties, on August 13, 2008.
Reclamation District 784 (RD 784)	Encroachment Permit	Yes	RD 784 is one of the project sponsors and coordination with RD 784 regarding levee encroachments is ongoing. RD 784 signed the application for the Reclamation Board encroachment permit with no objections.
Yuba County	Grading Permit	Yes	Grading permit was received in May 2008
State Mining and Geology Board (SMGB)	Reclamation Plan	Yes	The Reclamation Plan was approved and SMGB mining permit (No. 91-58-0026) issued for Ella and Platter/JTS Borrow sites on Sept 22, 2009.

CEQA	EIR	Yes	EIR certified by the TRLIA board on February 6, 2007 and a Notice of Determination filed with the State Clearinghouse (Number 2006062071) on February 8, 2007.
NEPA	EIS	Yes	Corps of Engineers Finalized the Feather River Setback Levee Environmental Impact Statement and signed the Record of Decision on December 8, 2008.
Section 104 Credit	Future federal projects cost Sharing	Yes	The Section 104 credit for this Project Element was issued by the Corps on April 3, 2009

Project Element 5 Applicable Permit and Environmental Documentation (refer to exhibit A of overall TRLIA work plan)			
PERMITTING AGENCY	PERMIT	ACTION DONE	STATUS/COMMENT
Central Valley Flood Protection Board (CVFPB)	Encroachment Permit	Yes	Permit No. 18170 BD issued on August 7, 2007.
Central Valley Flood Protection Board (CVFPB)	Encroachment Permit	Yes	CVFPB issued landside access corridor fence permit No. 18690 BD on March 12, 2012 meeting.
Central Valley Flood Protection Board (CVFPB)	Encroachment Permit	Yes	Permit No. 18170 BD permit modified for seepage berm to provide final fix for cutoff wall trench cave-in, issued on 7/17/08
Central Valley Flood Protection Board (CVFPB)	Encroachment Permit	Yes	Permit No. 18690 issued for construction of Segment 3 toe Access Corridor. Permit includes Special conditions dealing with elderberry shrub mitigation and drainage impacts. This permit clarified and modified by CVFPB letter of July 30, 2013.
Central Valley Flood Protection Board (CVFPB)	Encroachment Permit	Yes	Permit No. 18170-1 BD permit modification for Elderberry shrub relocation.
U.S. Army Corps of Engineers (Corps)	Section 10 Permit	Yes	Navigable waterways not affected
Corps	Section 404 Permit	Yes	No jurisdictional features affected. Corps issued "Letter of No Permit Required" on July 23, 2007
Corps	408 Approval of project levee alteration	Yes	Finding of No Significant Impact (FONSI) issued by Corps of

			Engineers on July 11, 2007. Corps approved Section 408 alteration on August 2, 2007.
Regional Water Quality Control Board (RWQCB); Central Valley Region (Region 5)	Section 401 Water Quality Certification	Yes	No 404 permit triggering 401 compliance. RWQCB sent email on August 15, 2007 verifying that 401 certification was not necessary
RWQCB, Region 5	National Pollution Discharge Elimination System (NPDES) Permit per Section 402 of the Clean Water Act	Yes	A NPDES permit (WDID # 5S5BC348901) was issued on 9/18/07. A Storm water Pollution Prevention Plan (SWPPP) has been developed and is being followed.
Feather River Air Quality Management District (FRAQMD)	Authority to Construct	Yes	Contractor's Fugitive Dust Plan has been developed and submitted to the FRAQMD.
U.S. Fish and Wildlife Service	Endangered Species Act Compliance	Yes	Project design and mitigation measures prevent take of threatened and endangered species. FWS sent a letter on May 7, 2007 agreeing that there were no impacts to any endangered species.
U.S. Fish and Wildlife Service	Endangered Species Act Compliance	Yes	F&WS issued a Biological Opinion to support Elderberry shrub transplants for CVFPB Permit No. 18170-1 BD on January 15, 2013. This Biological Opinion was revised on July 16, 2013 to reflect the changes identified during the Elderberry shrub transplants.
National Marine Fisheries Service	Endangered Species Act Compliance	Yes	Project will have no affect on fishery resources and habitats.
California Department of Fish and Game (DFG)	California Endangered Species Act Compliance	Yes	Project design and mitigation measures prevent take of threatened and endangered species.
DFG	Streambed Alteration Agreement	Yes	All ground disturbances is above the Feather River ordinary high water mark. Neither the bed nor bank of the river will be disturbed. DFG sent letter on May 2, 2007 verifying that a Streambed Alteration Agreement was not required.
California State Lands Commission (SLC)	Encroachment Permit	Yes	All ground disturbance is above the Feather River ordinary high water mark and outside SLC jurisdiction.
California Department of	Conversion of	Yes	No timberland conversion is required

Forestry	timberland to other uses.		for the project.
The Resources Agency	Cancellation of Williamson Act Contract	Yes	No Williamson Act contract cancellations are required to implement the project.
California Department of Transportation (Caltrans)	Encroachment on or across a State highway	Yes	Project facilities do not encroach onto a State highway. However, construction equipment will likely use State Route 70 (SR 70). Development and implementation of a traffic control plan is being coordinated with Caltrans.
Caltrans	Encroachment on Caltrans property	Yes	A portion of a stability berm encroaches a short distance onto property owned by Caltrans used for habitat mitigation. A real estate easement for this berm was obtained from Caltrans. No adverse effects to protected habitats occur.
Native American Heritage Commission (NAHC)	Evaluation of effects on Native American burials or artifacts	Yes	Coordination with the NAHC has occurred and no known Native American sites or sensitive areas would be affected by the project
State Office of Historic Preservation (SHPO)	Evaluation of effects on historic and cultural resources	Yes	No known sensitive historic or cultural resources would be affected by the project. SHPO sent letter on July 16, 2007 agreeing that no impacts to historic or cultural resources were occurring.
Reclamation District 784 (RD 784)	Encroachment Permit	Yes	RD 784 is one of the project sponsors and coordination with RD 784 regarding levee encroachments is ongoing. RD 784 signed the application for a CVFPB encroachment permit
Yuba County	Grading Permit	Yes	Yuba County is one of the project sponsors and coordination with the County regarding construction of this project continues.
CEQA	EIR Processed for Various Permits	Yes	EIR certified by the TRLIA board on February 6, 2007 and a Notice of Determination filed with the State Clearinghouse (Number 2006062071) on February 8, 2007
CEQA	EIR Addendum # 2	Yes	EIR addendum for the Seepage berm

			addition needed to provide the final solution to the cutoff wall trench failure.
Section 104 Credit	Future federal projects cost sharing	Yes	\$32.7 M Section 104 credit approved by Corps HQ on August 7, 2007

Project Element 5A: Feather River Erosion Site 2

PERMITTING AGENCY	PERMIT	ACTION DONE	STATUS/COMMENT
Central Valley Flood Protection Board	Encroachment Permits	Yes	Encroachment permit No. 18479 issued on September 10, 2009
Corps	Section 404 Permit	Yes	Obtained Nationwide Permit, application submitted to Corps on June 25, 2009
Corps	Wetlands Delineation	Yes	Delineation submitted to Corps on May 27, 2009
Corps	408 approval of project levee alteration	Yes	Corps does not consider this as eligible under the Section 408 approval given for Segments 1 & 3. Per discussion with the Corps, they will approve work under Section 208 authority when they comment on the CVFPB Encroachment Permit Application.
Regional Water Quality Control Board (RWQCB); Central Valley Region (Region 5)	Section 401 Water Quality Certification	Yes	Obtained on July 9, 2009
RWQCB, Region 5	National Pollution Discharge Elimination System (NPDES) Permit per Section 402 of the Clean Water Act	Yes	TRLIA has a current WDID # 5S5BC348901 that was issued by the Regional Water Quality Control Board. The permit covers Feather River Segments 1, 2, and 3 and encompasses the Erosion Site. This permit is current.
Feather River Air Quality Management District (FRAQMD)	Authority to Construct	Yes	Used Documentation provided for Project Element 5
U.S. Fish and Wildlife Service	Endangered Species Act Compliance (Biological Opinion)	Yes	Biological opinion prepared, take avoided, no Incidental Take authorization needed.
National Marine Fisheries Service (NMFS)	Endangered Species Act Compliance	Yes	Biological opinion prepared, take avoided, no Incidental Take authorization needed.

California Department of Fish and Game (DFG)	California Endangered Species Act Compliance (2081)	Yes	No potential take of State listed species.
DFG	Streambed Alteration Agreement	Yes	Obtained on July 9, 2009
Native American Heritage Commission (NAHC)	Evaluation of effects on Native American burials or artifacts	Yes	Cultural resources surveys and consultation with Native American groups have found no evidence of burials or artifacts
State Office of Historic Preservation (SHPO)	Evaluation of effects on historic and cultural resources	Yes	Cultural resources surveys and consultation with Native American groups have found no evidence of significant historic or cultural resources
Reclamation District 784 (RD 784)	Encroachment Permit	Yes	RD 784 is one of the project sponsors and coordination with RD 784 regarding levee encroachments is ongoing. RD 784 signed the application for the Reclamation Board encroachment permit with minor conditions.
Yuba County	Grading Permit	Yes	Used Documentation provided for Project Element 5
State Mining and Geology Board (SMGB)	SMARA Permit	Yes	The Reclamation Plan was approved and SMGB mining permit (No. 91-58-0026) issued for Ella and Platter/JTS Borrow sites on Sept 22, 2009. Used Ella Site.
CEQA	EIR	Yes	ISIMND certified by TRLIA Board on 10/17/06
NEPA	EIS	Yes	No federal action constituting a NEPA trigger
Section 104 Credit	Future federal projects cost sharing	Yes	Work is not eligible for Section 104 Credit because it being accomplished under Section 208 authority and was not approved under Section 408 authority.

Project Element 9, & 9A Permit and Environmental Documentation			
PERMITTING AGENCY	PERMIT	ACTION DONE	STATUS/COMMENT
The Central Valley Flood Protection Board	Encroachment Permit	Yes	Permit No. 18170 BD issued on August 7, 2007.
The Central Valley Flood Protection Board	Encroachment Permit	Yes	Permit No. 18170 BD modified for design changes, issued on 7/17/08
The Central Valley Flood Protection Board	Encroachment Permit	Pending	Encroachment permit Application submitted on May 13, 2013 for Erosion Protection Berm to remediate ULDC Criteria Exceedence. CVFPB approved permit on September 27, 2013 conditioned that the Corps issue a minor 408 letter, which has not yet occurred. Anticipate the issuance of this permit early in 2014
U.S. Army Corps of Engineers (Corps)	Section 10 Permit	Yes	Navigable waterways not affected
Corps	Section 404 Permit	Yes	No jurisdictional features affected. Corps issued "Letter of No Permit Required" on July 23, 2007. Subsequently, a Nationwide permit was received in July 2008 allowing repairs to sinkholes observed on the waterside toe of the existing levee in a reach of the Site 7 Extension segment of levee.
Corps	408 Approval of project levee alteration	Yes	Finding of No Significant Impact (FONSI) issued by Corps of Engineers on July 11, 2007. Corps approved Section 408 alteration on August 2, 2007. Subsequently, water quality certification was received in July 2008 allowing repairs to sinkholes observed on the waterside toe of the existing levee in a reach of the Site 7 Extension segment of levee.

Regional Water Quality Control Board (RWQCB); Central Valley Region (Region 5)	Section 401 Water Quality Certification	Yes	No 404 permit triggering 401 compliance. RWQCB sent email on August 15, 2007 verifying that 401 certification was not necessary
RWQCB, Region 5	National Pollution Discharge Elimination System (NPDES) Permit per Section 402 of the Clean Water Act	Yes	A NPDES permit (WDID # 5S5BC348901) was issued on 9/18/07. A Storm water Pollution Prevention Plan (SWPPP) has been developed and is being followed.
Feather River Air Quality Management District (FRAQMD)	Authority to Construct	Yes	Contractor's Fugitive Dust Plan has been developed and submitted to the FRAQMD.
U.S. Fish and Wildlife Service	Endangered Species Act Compliance	Yes	Project design and mitigation measures prevent take of threatened and endangered species. FWS sent a letter on May 7, 2007 agreeing that there were no impacts to any endangered species.
National Marine Fisheries Service	Endangered Species Act Compliance	Yes	Project will have no affect on fishery resources and habitats.
California Department of Fish and Game (DFG)	California Endangered Species Act Compliance	Yes	Project design and mitigation measures prevent take of threatened and endangered species.
DFG	Streambed Alteration Agreement	Yes	All ground disturbance is above the Feather River ordinary high water mark. Neither the bed nor bank of the river will be disturbed. DFG sent letter on May 2, 2007 verifying that a Streambed Alteration Agreement was not required. Subsequently, a streambed authorization permit was received in June 2008 allowing repairs to sinkholes observed on the waterside toe of the existing levee in a reach of the Site 7 Extension segment of levee.
California State Lands Commission (SLC)	Encroachment Permit	Yes	All ground disturbance is above the Feather River ordinary high water mark and outside SLC jurisdiction.
California Department of Forestry	Conversion of timberland to other uses.	Yes	No timberland conversion is required for the project.

The Resources Agency	Cancellation of Williamson Act Contract	Yes	No Williamson Act contract cancellations are required to implement the project.
California Department of Transportation (Caltrans)	Encroachment on or across a State highway	Yes	Project facilities do not encroach onto a State highway. However, construction equipment will likely use State Route 70 (SR 70). Development and implementation of a traffic control plan is being coordinated with Caltrans.
Caltrans	Encroachment on Caltrans property	Yes	A portion of a stability berm encroaches a short distance onto property owned by Caltrans used for habitat mitigation. A real estate easement for this berm was obtained from Caltrans. No adverse effects to protected habitats occur.
Native American Heritage Commission (NAHC)	Evaluation of effects on Native American burials or artifacts	Yes	Coordination with the NAHC has occurred and no known Native American sites or sensitive areas would be affected by the project
State Office of Historic Preservation (SHPO)	Evaluation of effects on historic and cultural resources	Yes	No known sensitive historic or cultural resources would be affected by the project. SHPO sent letter on July 16, 2007 agreeing that no impacts to historic or cultural resources were occurring.
Reclamation District 784 (RD 784)	Encroachment Permit	Yes	RD 784 is one of the project sponsors RD 784 signed the application for a CVFPB encroachment permit with no objections.
Yuba County	Grading Permit	Yes	Yuba County is one of the project sponsors and coordination with the County regarding construction of this project continues.
CEQA	EIR Processed for Various Permits	Yes	EIR certified by the TRLIA board on February 6, 2007 and a Notice of Determination filed with the State Clearinghouse (Number 2006062071) on February 8, 2007
CEQA	CEQA Addendum #2	Yes	EIR addendum for the Water Blanket modifications.
Section 104 Credit	Future federal projects cost sharing	Yes	\$32.7 M Section 104 credit approved by Corps HQ on August 7, 2007