

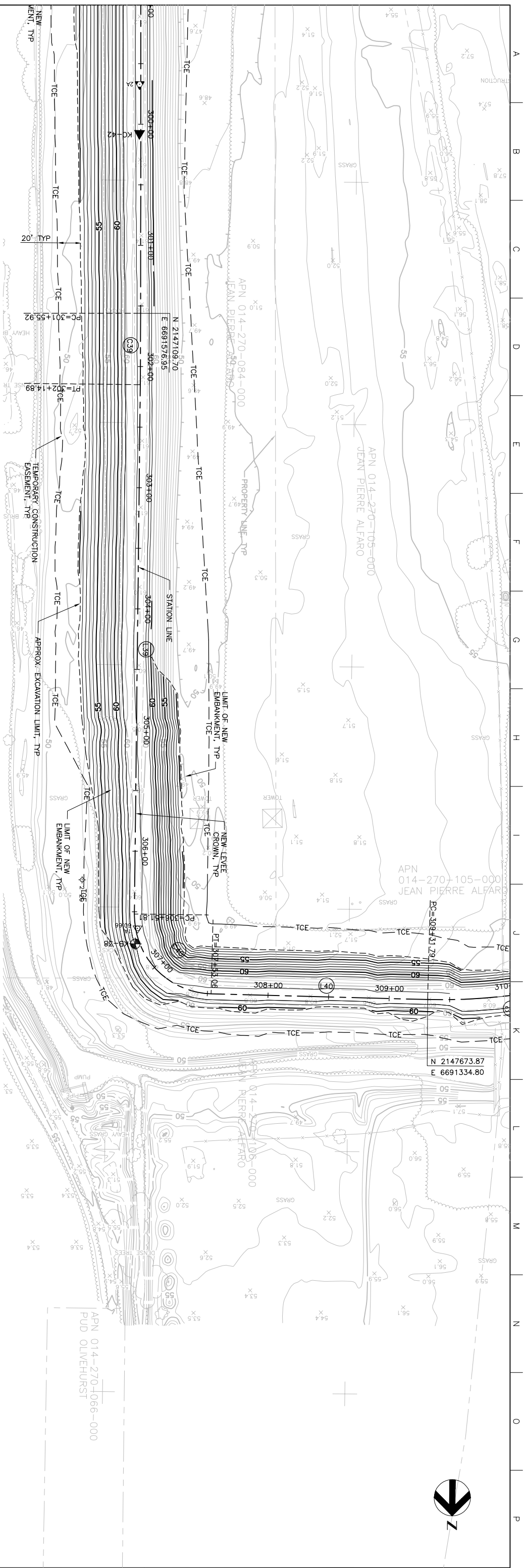
MATCHLINE FOR CONTINUATION SEE DWG C-224

Station	Existing Levee Crown Elevation (TYF)	New Levee Crown Elevation (TYF)
300+00	61.2	62.20
301+00	61.3	62.20
302+00	61.4	62.20
303+00	61.1	62.20
304+00	60.9	62.20
305+00	60.6	62.20
306+00	60.3	62.20
307+00	60.5	62.20
308+00	60.4	62.20
309+00	60.4	62.20

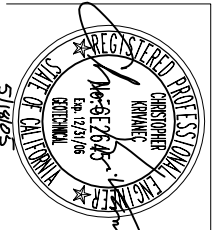
MATCHLINE FOR CONTINUATION SEE DWG C-226

PROFILE
SCALE: HORIZ: 1" = 40'
VERT: 1" = 10'

PLAN
SCALE: 1" = 40'



Issue No.	Description	Date	Drawn	Checked	Revised By	Project
0	ISSUED FOR CONSTRUCTION	5/18/05	ACC	PHH	CEK	KRM



HDR
HDR Engineering, Inc.
10000 Wilshire Blvd., Suite 1000
Beverly Hills, CA 90210
Tel: 310.271.1000
Fax: 310.271.1001
www.hdr.com

Project Manager: **K. MYERS**
Designed: **C. KRIVANEC**
Designed: **P. HRADLICK**
Checked: **A. COLLINS**

Phase II Levee Repairs
Upper Bear River, WP Interceptor Canal and Yuba River
Reclamation District No. 784
Marysville, California

Three Rivers Levee Improvement Authority

WPIC
PLAN AND PROFILE

Date: **MAY, 2005**
Scale: **AS NOTED**

Project No.: **201064-19703**
File Name: **C225.DWG**

Drawing No.: **C-225**
Issue: **X**