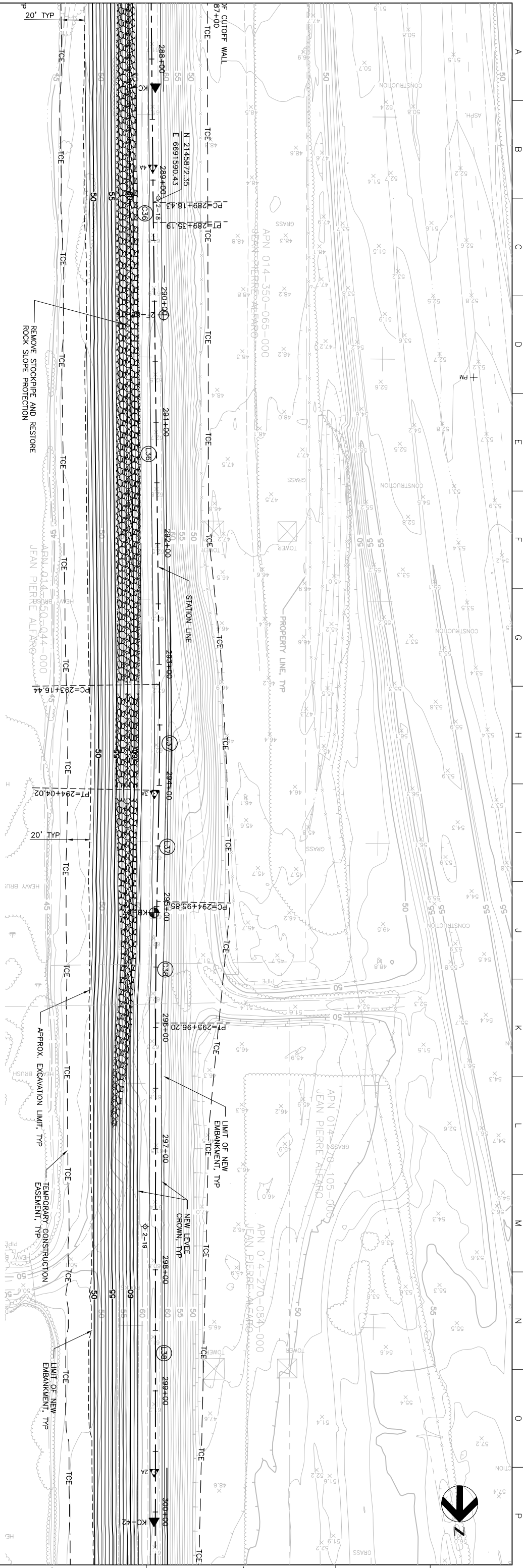


MATCHLINE FOR CONTINUATION SEE DWG C-223

Station	Existing Levee Crown Elevation (TYF)	New Levee Crown Elevation (TYF)
288+00	62.20	62.0
289+00	61.8	62.20
290+00	62.0	62.20
291+00	62.3	62.20
292+00	62.2	62.20
293+00	62.1	62.20
294+00	61.9	62.20
295+00	61.7	62.20
296+00	61.9	62.20
297+00	61.6	62.20
298+00	61.4	62.20
299+00	61.3	62.20
300+00	61.1	62.20
301+00	61.0	62.20
302+00	60.9	62.20
303+00	61.0	62.20

MATCHLINE FOR CONTINUATION SEE DWG C-225



Issue No.	0	ISSUED FOR CONSTRUCTION	Date	5/18/05	ACC	PH	CEK	KRM
Description								
Project Manager	K. MYERS							
Designed	C. KRIVANEC							
Checked	P. HRADLICK							
Drawn	A. COLLINS							
Date	MAY, 2005							
Scale	AS NOTED							
Project No.	201064-19703							
File Name	C224.DWG							
Drawing No.	C-224							
Issue	X							

**WPIC**  
**PLAN AND PROFILE**

Phase II Levee Repairs  
Upper Bear River, WP Interceptor Canal and Yuba River  
Reclamation District No. 784  
Marysville, California  
Three Rivers Levee Improvement Authority

**HDR**  
HDR Engineering, Inc.  
REGISTERED PROFESSIONAL ENGINEER  
KONING KRIVANEC  
No. 61263  
Exp. 12/31/06  
5/18/05