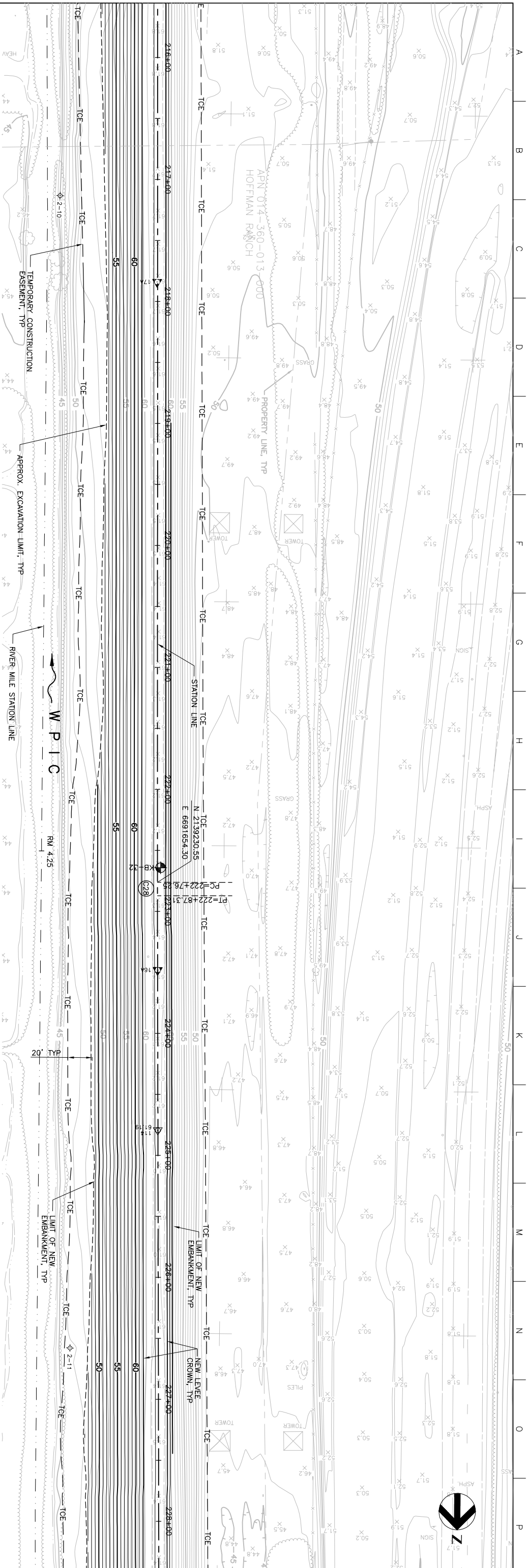


MATCHLINE FOR CONTINUATION SEE DWG C-217

Station	Existing Levee Crown Elevation (TYF)	New Levee Crown Elevation (TYF)
216+00	62.19	61.9
217+00	62.19	61.9
218+00	62.19	61.8
219+00	62.19	61.5
220+00	62.19	61.5
221+00	62.19	61.4
222+00	62.19	61.3
223+00	62.19	61.2
224+00	62.19	61.2
225+00	62.19	61.1
226+00	62.19	61.1
227+00	62.19	61.1
228+00	62.19	61.1

PROFILE
SCALE: HORIZ: 1" = 40'
VERT: 1" = 10'

MATCHLINE FOR CONTINUATION SEE DWG C-219



PLAN
SCALE: 1" = 40'

Issue No.	0	ISSUED FOR CONSTRUCTION	Date	5/18/05	ACC	PHJ	CEK	KRM
Design			Drawn					
Checked			Project Mgr					

Project Manager	K. MYERS
Designed	C. KRIVANEC
Designed	P. HRADLICK
Drawn	A. COLLINS

Phase II Levee Repairs
Upper Bear River, WP Interceptor Canal and Yuba River
Reclamation District No. 784
Marysville, California

Three Rivers Levee Improvement Authority

Date	MAY, 2005	Project No.	201064-19703	Drawing No.	C-218
Scale	AS NOTED	File Name	C218.DWG	Issue	X