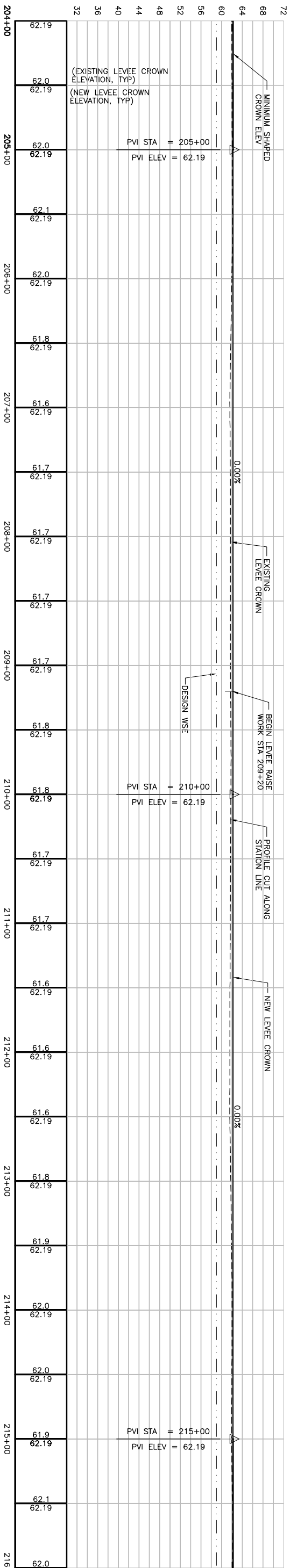


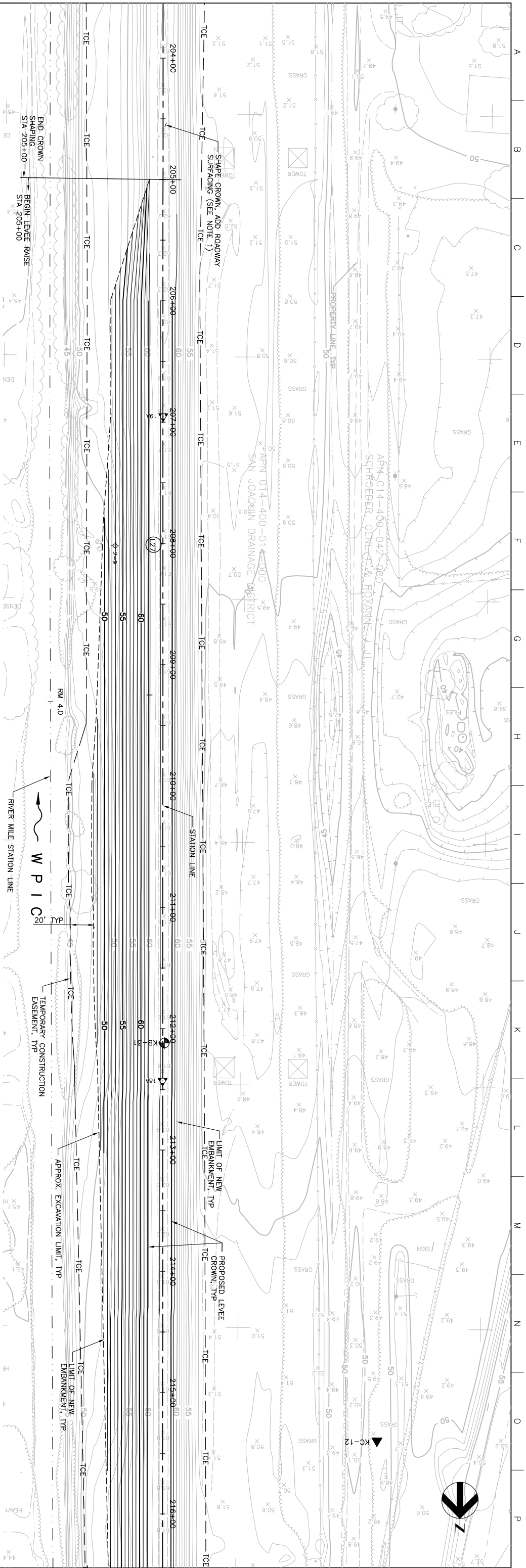
MATCHLINE FOR CONTINUATION SEE DWG C-216



MATCHLINE FOR CONTINUATION SEE DWG C-218

NOTE:
1. IN AREAS WHERE FULL RAISE NOT REQUIRED, GRADE CROWN ROADWAY TO ACHIEVE MINIMUM SHAPED CROWN ELEVATION SHOWN ON PROFILE. REMOVE EXISTING ROADWAY AND IMPORT SELECT MATERIAL AS NECESSARY. ADD 4 INCHES ROADWAY SURFACING AT ALL CROWN LOCATIONS PER DETAIL Z, SHEET C-230.

PLAN
SCALE: 1" = 40'



Issue No.	0	ISSUED FOR CONSTRUCTION	Date	5/18/06	ACC	Dim.	PJH	CHKD.	CEK	Proj. Mgr.	KRM
-----------	---	-------------------------	------	---------	-----	------	-----	-------	-----	------------	-----

Project Manager	K. MYERS
Designed	C. KRIVANEC
Checked	P. HRADLICK
Drawn	A. COLLINS

Phase II Levee Repairs
Upper Bear River, WP Interceptor Canal and Yuba River
Reclamation District No. 784
Marysville, California
Three Rivers Levee Improvement Authority

Date	MAY, 2005	Project No.	201064-19703
Scale	AS NOTED	File Name	C217.DWG

WPIC
PLAN AND PROFILE

Drawing No. **C-217**

Issue **X**