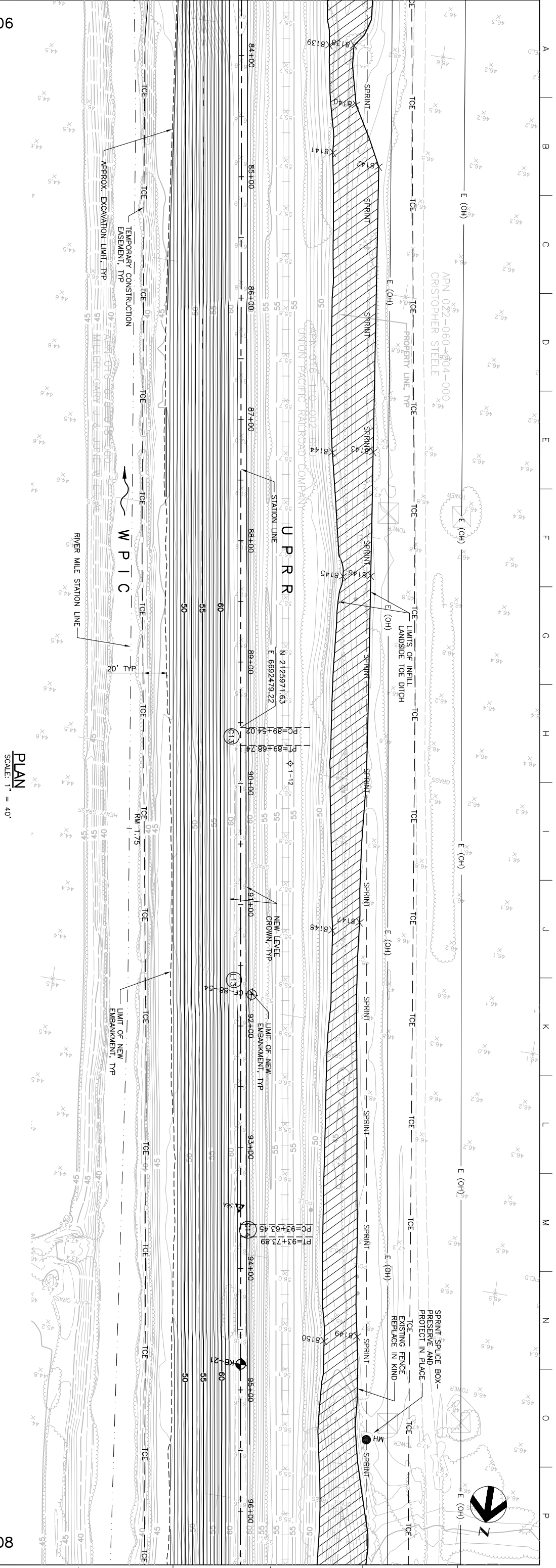


MATCHLINE FOR CONTINUATION SEE DWG C-206

Station	Existing Levee Crown Elevation (TYF)	New Levee Crown Elevation (TYF)
84+00	62.16	61.6
85+00	62.16	61.6
86+00	62.16	61.5
87+00	62.16	61.6
88+00	62.16	61.6
89+00	62.16	61.4
90+00	62.16	61.3
91+00	62.16	61.2
92+00	62.16	61.2
93+00	62.16	61.4
94+00	62.16	61.5
95+00	62.16	61.3
96+00	62.16	61.2

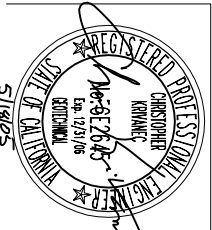
MATCHLINE FOR CONTINUATION SEE DWG C-208



PLAN  
SCALE: 1" = 40'

PROFILE  
SCALE: HORIZ: 1" = 40'  
VERT: 1" = 10'

Issue No.	Description	Date	Drawn	Checked	Responsible	Project
0	ISSUED FOR CONSTRUCTION	5/18/05	ACC	PUH	CEK	KRM



**HDR**  
HDR Engineering, Inc.  
388 LINDEN, ON BEHALF OF  
BORING, EADS, ONE INCH  
ADJUST SCALE AS SHOWN

Project Manager	K. MYERS
Designed	C. KRIVANEC
Designed	P. HRADLICK
Drawn	A. COLLINS

Phase II Levee Repairs  
Upper Bear River, WP Interceptor Canal and Yuba River  
Reclamation District No. 784  
Marysville, California  
Three Rivers Levee Improvement Authority

**WPIC**  
**PLAN AND PROFILE**

Date	MAY, 2005	Project No.	201064-19703	Drawing No.	C-207
Scale	AS NOTED	File Name	C207.DWG	Issue	