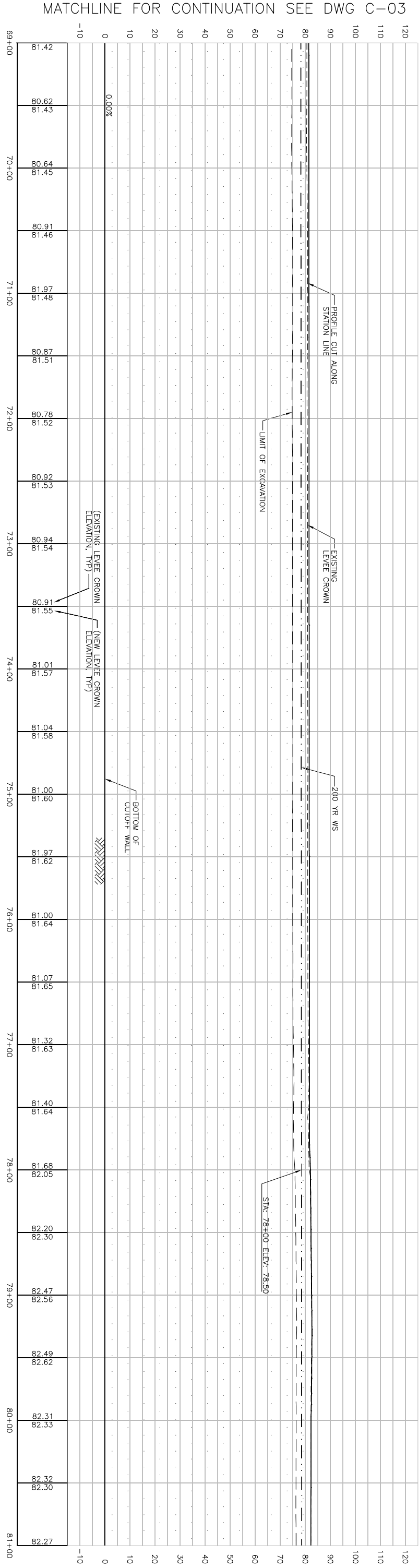


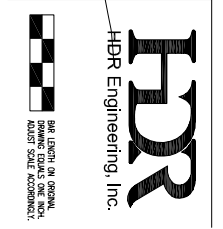
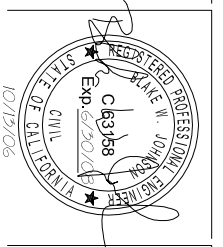
- NOTES:
1. STRIP WATERSIDE SLOPE 6" FROM STA. 37+00 TO STA. 105+00.
  2. REMOVE AND DISPOSE OF TOP ONE FOOT OF LEVEE CROWN MATERIAL FROM STA. 37+00 TO STA. 51+00.
  3. SEE DWG C-08 FOR STATION LINE & CURVE DATA.
  4. FIELD FIT WATERSIDE RAMP (STA. 77+75) PER ENGINEER'S DIRECTION.

PLAN  
SCALE: 1" = 40'



PROFILE  
HORIZ. 1" = 40'  
VERT. 1" = 20'

Issue No.	Description	Date	Drawn	Checked	Revised By	App.
1	NEW TOE LINE SHOWN ON DRAWING	8/31/06	ACC	PJH	BWJ	KRM
A	ISSUED FOR BIDS	6/12/06	ACC	PJH	BWJ	KRM



Project Manager	Designed	Checked
	B. JOHNSON	A. COLLINS

Phase IV Levee Repairs  
Yuba River  
Reclamation District No. 784  
Marysville, California  
Three Rivers Levee Improvement Authority

Date	Project No.	Drawing No.	Issue
JUNE, 2006	201064-36522	C-04	A