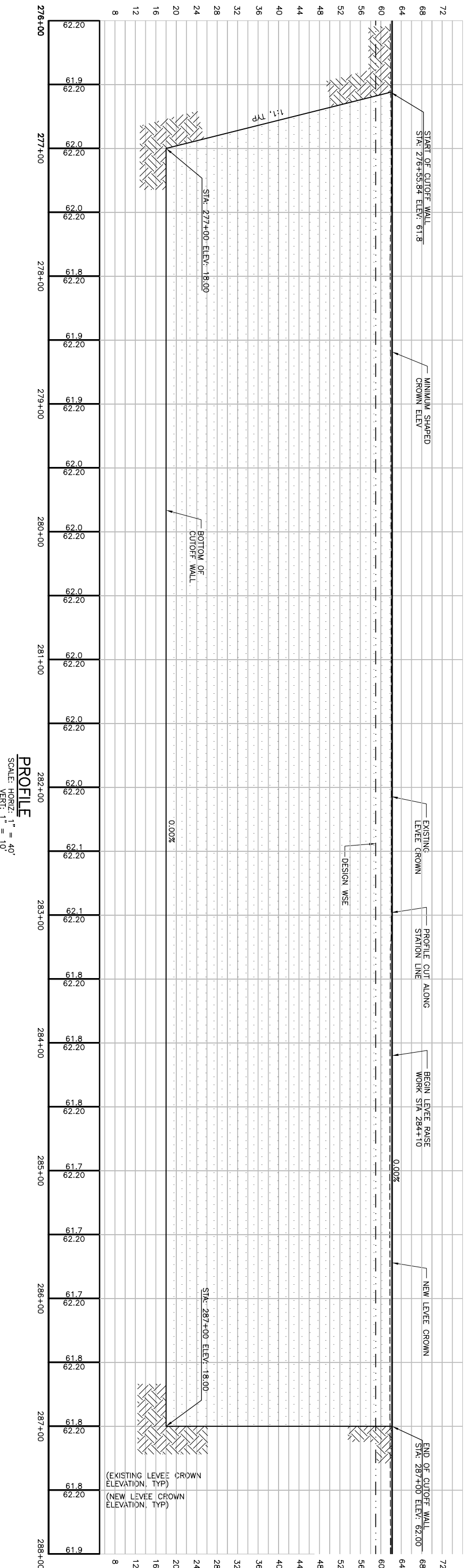


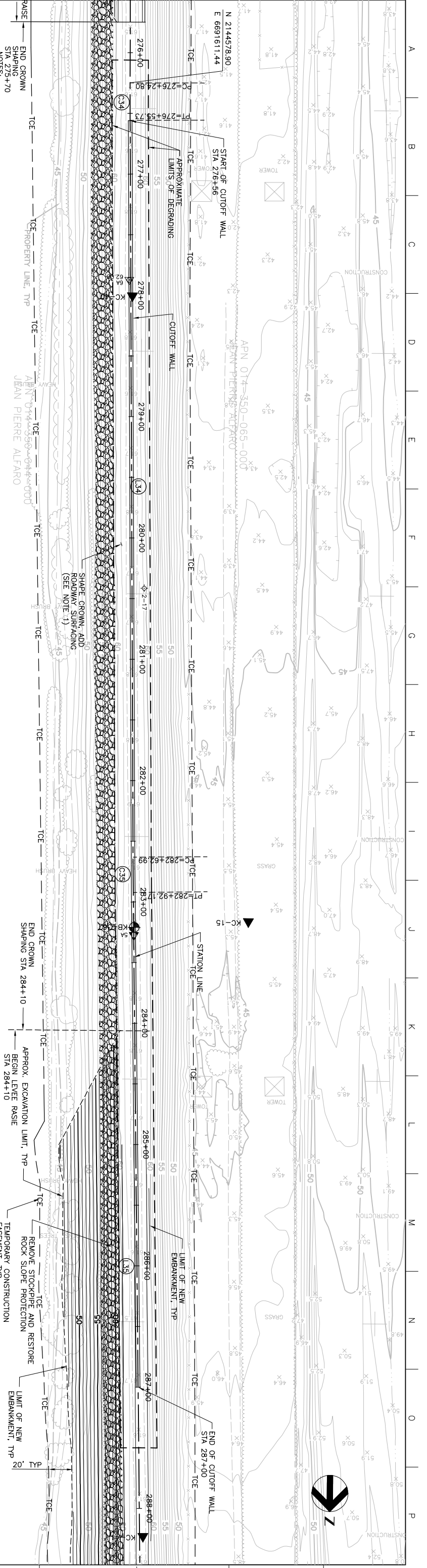
MATCHLINE FOR CONTINUATION SEE DWG C-222



MATCHLINE FOR CONTINUATION SEE DWG C-224

1. IN AREAS WHERE FULL RAISE NOT REQUIRED, GRADE CROWN ROADWAY TO ACHIEVE MINIMUM SHAPED CROWN ELEVATION SHOWN ON PROFILE. REMOVE EXISTING ROADWAY AND IMPROVE SELECT MATERIAL AS NECESSARY. ADD 4 INCHES ROADWAY SURFACING AT ALL CROWN LOCATIONS PER DETAIL Z SHEET C-230.

PLAN  
SCALE: 1" = 40'



Issue No.	0	ISSUED FOR CONSTRUCTION	Date	5/18/05	Drawn	ACC	Checked	PHH	Revised By	CEK	Project No.	201064-19703	File Name	C223.DWG	Drawing No.	C-223	Issue	X
<p><b>REGISTERED PROFESSIONAL ENGINEER</b> CHRISTOPHER KRIVANEC No. 61263 Exp. 12/31/06 State of California 5/19/05</p> <p><b>HDR</b> HDR Engineering, Inc. 388 LINDEN, SUITE 100 ADAMS STREET, ALHAMBRA, CA 91801</p> <p>Project Manager: K. MYERS Designed: C. KRIVANEC Checked: P. HRADLICK Drawn: A. COLLINS</p> <p>Phase II Levee Repairs Upper Bear River, WP Interceptor Canal and Yuba River Reclamation District No. 784 Marysville, California Three Rivers Levee Improvement Authority</p> <p><b>WPIC</b> <b>PLAN AND PROFILE</b></p> <p>Date: MAY 2005 Scale: AS NOTED</p>																		