

MATCHLINE FOR CONTINUATION SEE DWG C-213

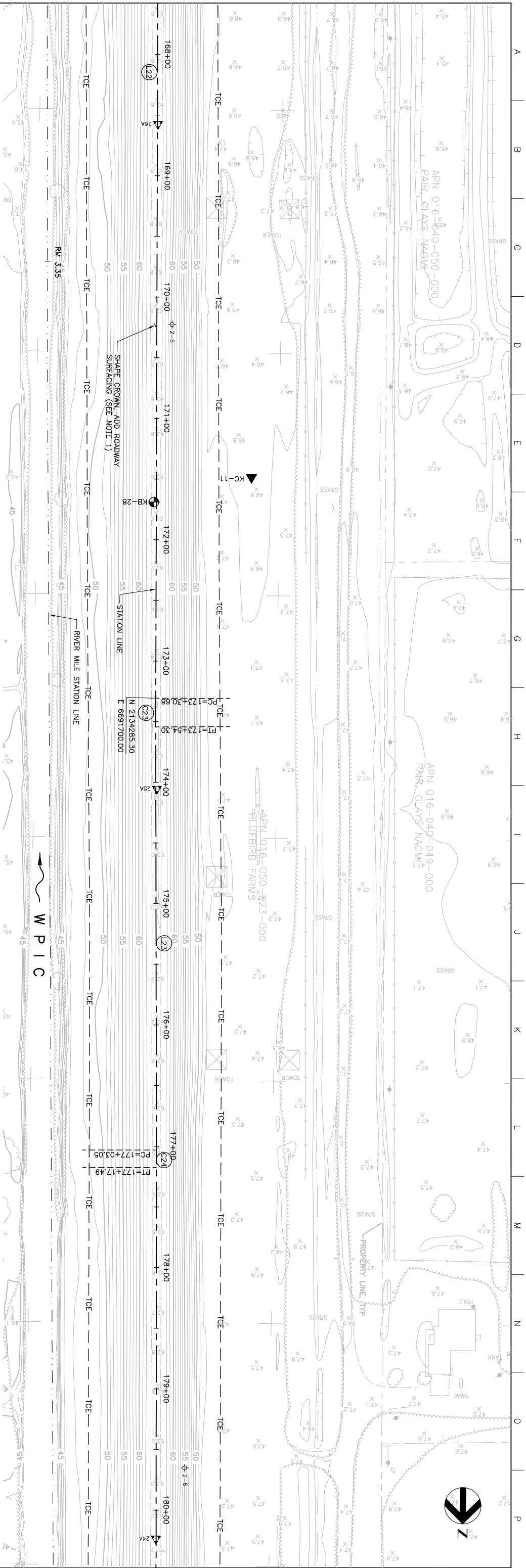
Station	72	68	64	60	56	52	48	44	40	36	32
168+00	62.18	62.7	62.18	62.7	62.18	62.7	62.18	62.7	62.18	62.7	62.18
169+00	62.7	62.18	62.7	62.18	62.7	62.18	62.7	62.18	62.7	62.18	62.7
170+00	62.7	62.18	62.7	62.18	62.7	62.18	62.7	62.18	62.7	62.18	62.7
171+00	62.6	62.18	62.6	62.18	62.6	62.18	62.6	62.18	62.6	62.18	62.6
172+00	62.8	62.18	62.8	62.18	62.8	62.18	62.8	62.18	62.8	62.18	62.8
173+00	62.8	62.18	62.8	62.18	62.8	62.18	62.8	62.18	62.8	62.18	62.8
174+00	62.8	62.18	62.8	62.18	62.8	62.18	62.8	62.18	62.8	62.18	62.8
175+00	62.9	62.18	62.9	62.18	62.9	62.18	62.9	62.18	62.9	62.18	62.9
176+00	62.8	62.18	62.8	62.18	62.8	62.18	62.8	62.18	62.8	62.18	62.8
177+00	62.5	62.18	62.5	62.18	62.5	62.18	62.5	62.18	62.5	62.18	62.5
178+00	62.9	62.18	62.9	62.18	62.9	62.18	62.9	62.18	62.9	62.18	62.9
179+00	62.7	62.18	62.7	62.18	62.7	62.18	62.7	62.18	62.7	62.18	62.7
180+00	62.7	62.18	62.7	62.18	62.7	62.18	62.7	62.18	62.7	62.18	62.7

MATCHLINE FOR CONTINUATION SEE DWG C-215

NOTE:  
1. IN AREAS WHERE FULL RAISE NOT REQUIRED, GRADE CROWN ROADWAY TO ACHIEVE MINIMUM SHAPED CROWN ELEVATION SHOWN ON PROFILE. REMOVE EXISTING ROADWAY AND IMPORT SELECT MATERIAL AS NECESSARY. ADD 4 INCHES ROADWAY SURFACING AT ALL CROWN LOCATIONS PER DETAIL 2. SHEET C-230.

NOTE:

PLAN  
SCALE: 1" = 40'



PROFILE  
SCALE: HORIZ: 1" = 40'  
VERT: 1" = 10'

MINIMUM SHAPED CROWN ELEV

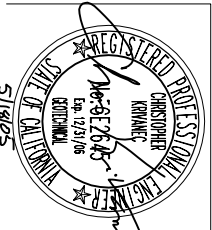
EXISTING LEVEE CROWN

PROFILE CUT ALONG STATION LINE

DESIGN WSE

PVI STA = 180+00

Issue No.	0
Description	ISSUED FOR CONSTRUCTION
Date	5/18/05
Drawn	ACC
Checked	PUH
Revised By	CEK
Project No.	KRM



**HDR**  
HDR Engineering, Inc.

Project Manager: K. MYERS  
Designed: C. KRIVANEC  
Checked: P. HRADLICK  
Drawn: A. COLLINS

Phase II Levee Repairs  
Upper Bear River, WP Interceptor Canal and Yuba River  
Reclamation District No. 784  
Marysville, California  
Three Rivers Levee Improvement Authority

**WPIC**  
**PLAN AND PROFILE**

Date: MAY, 2005  
Scale: AS NOTED

Project No.: 201064-19703  
File Name: C214.DWG

Drawing No.: **C-214**

Issue: **X**