

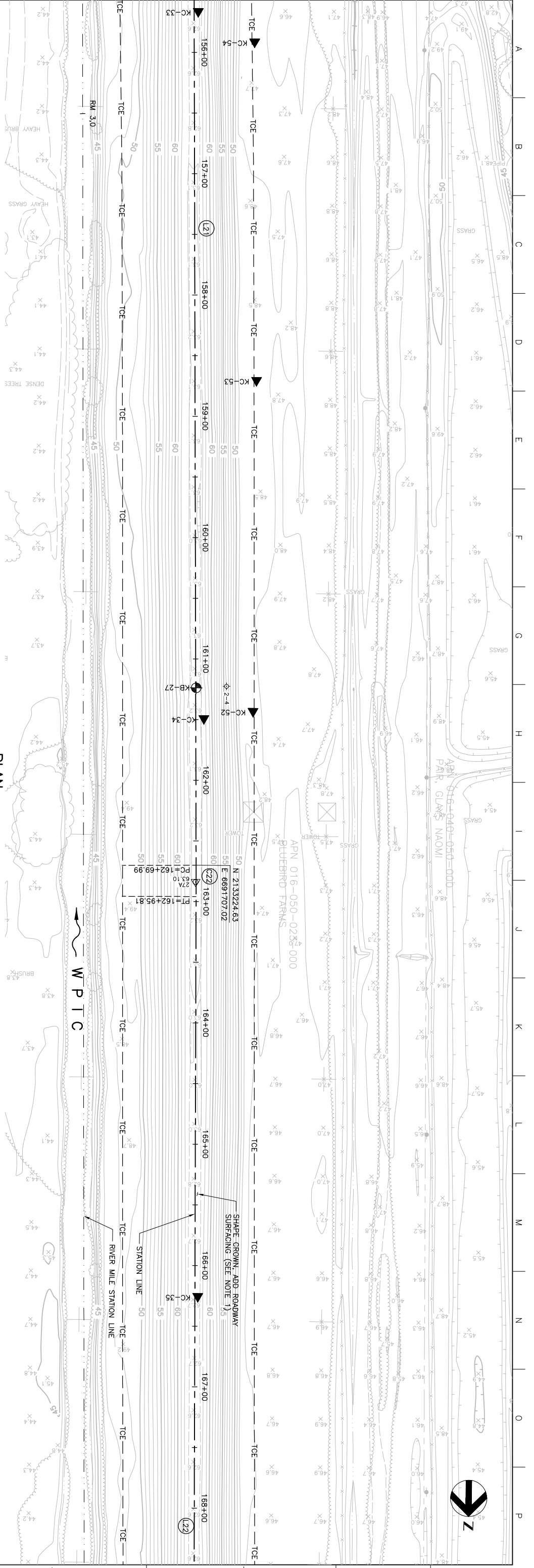
MATCHLINE FOR CONTINUATION SEE DWG C-212

Station	72	68	64	60	56	52	48	44	40	36	32	156+00	157+00	158+00	159+00	160+00	161+00	162+00	163+00	164+00	165+00	166+00	167+00	168+00		
EXISTING LEVEE CROWN	62.18	62.8	62.18	62.18	62.9	62.18	62.8	62.18	62.8	62.18	62.8	62.18	62.9	62.18	62.8	62.18	62.8	62.18	62.8	62.18	62.8	62.18	62.7	62.18	62.7	62.18
MINIMUM SHAPED CROWN ELEV	63.1	62.18	63.1	62.18	63.1	62.18	63.1	62.18	63.1	62.18	63.1	62.18	63.1	62.18	63.1	62.18	63.1	62.18	63.1	62.18	63.1	62.18	63.1	62.18	63.1	62.18
DESIGN WSE	63.1	62.18	63.1	62.18	63.1	62.18	63.1	62.18	63.1	62.18	63.1	62.18	63.1	62.18	63.1	62.18	63.1	62.18	63.1	62.18	63.1	62.18	63.1	62.18	63.1	62.18
PROFILE CUT ALONG STATION LINE	63.0	62.18	63.0	62.18	63.0	62.18	63.0	62.18	63.0	62.18	63.0	62.18	63.0	62.18	63.0	62.18	63.0	62.18	63.0	62.18	63.0	62.18	63.0	62.18	63.0	62.18
PVI STA = 160+00 PVI ELEV = 62.18																										
PVI STA = 165+00 PVI ELEV = 62.18																										

MATCHLINE FOR CONTINUATION SEE DWG C-214

NOTE:  
1. IN AREAS WHERE FULL RAISE NOT REQUIRED, GRADE CROWN ROADWAY TO ACHIEVE MINIMUM SHAPED CROWN ELEVATION SHOWN ON PROFILE. REMOVE EXISTING ROADWAY AND IMPORT SELECT MATERIAL AS NECESSARY. ADD 4 INCHES ROADWAY SURFACING AT ALL CROWN LOCATIONS PER DETAIL C-230.

PLAN  
SCALE: 1" = 40'



Issue No.	0	5/18/06	ACC	PH	CEK	KRM
Description	ISSUED FOR CONSTRUCTION	Date	Drawn	Checked	Revised	Proj. Mgr.

Project Manager	K. MYERS
Designed	C. KRIVANEC
Checked	P. HRADLICK
Drawn	A. COLLINS

Phase II Levee Repairs  
Upper Bear River, WP Interceptor Canal and Yuba River  
Reclamation District No. 784  
Marysville, California

Three Rivers Levee Improvement Authority

Date	MAY, 2005	Project No.	201064-19703	Drawing No.	C-213
Scale	AS NOTED	File Name	C213.DWG	Issue	X