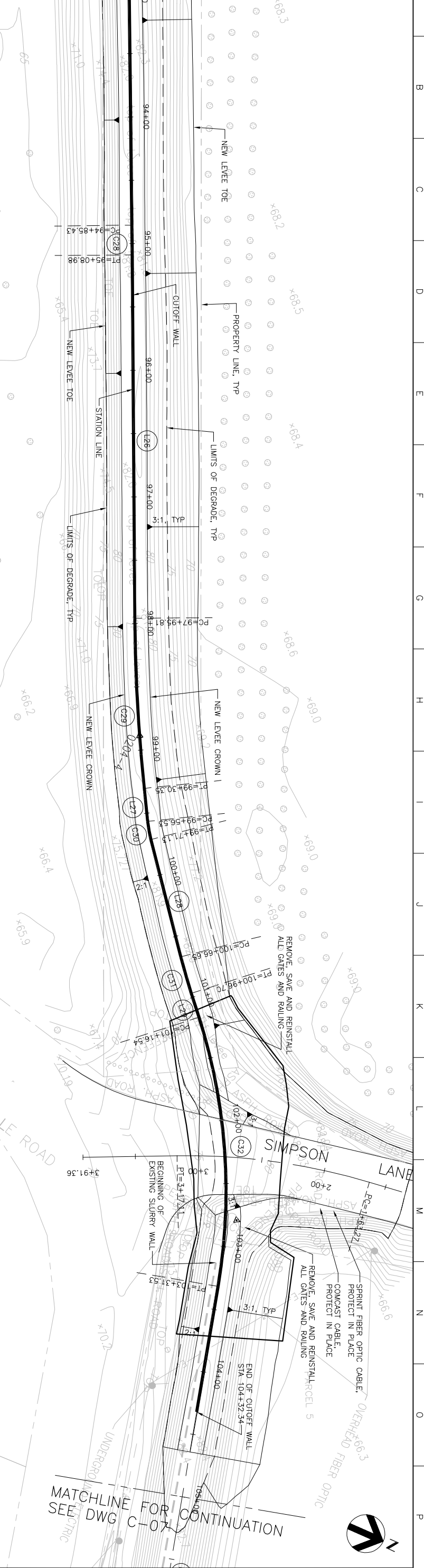


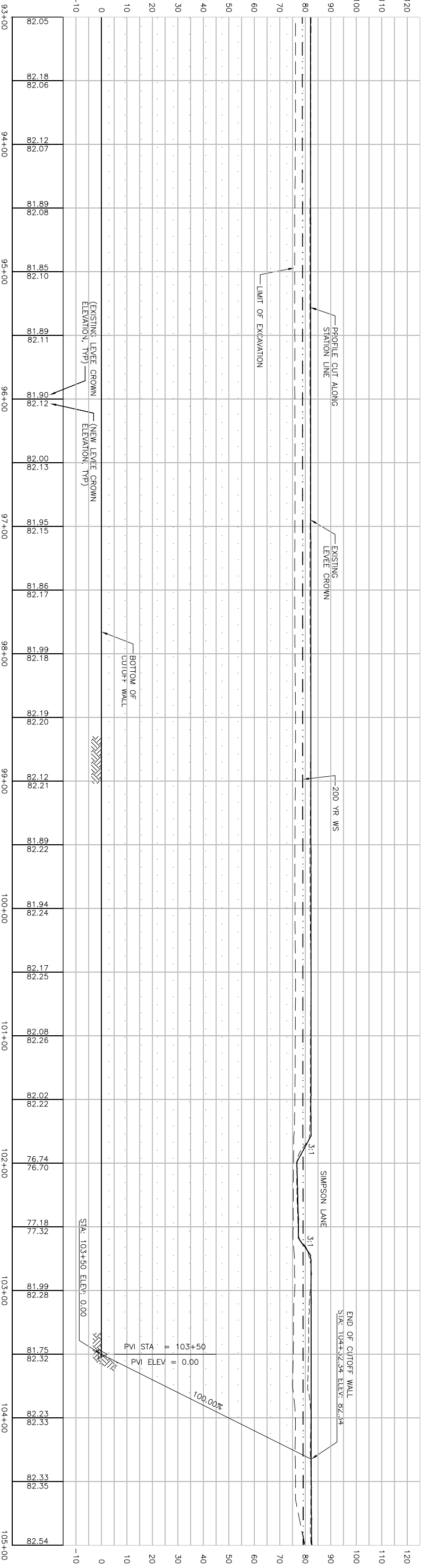
MATCHLINE FOR CONTINUATION
SEE DWG C-05



- NOTES:
1. STRIP WATERSIDE SLOPE 6" FROM STA. 37+00 TO STA. 105+00.
 2. REMOVE AND DISPOSE OF TOP ONE FOOT OF LEVEE CROWN MATERIAL FROM STA. 37+00 TO STA. 51+00.
 3. SEE DWG C-08 FOR STATION LINE & CURVE DATA.

PLAN
SCALE: 1" = 40'

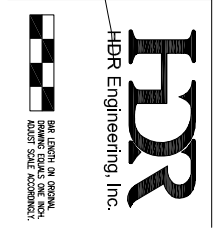
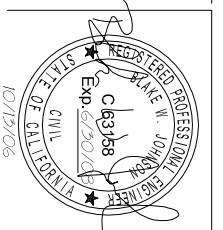
MATCHLINE FOR CONTINUATION SEE DWG C-05



MATCHLINE FOR CONTINUATION SEE DWG C-07

PROFILE
HORIZ: 1" = 40'
VERT: 1" = 20'

Issue No.	Description	Date	Drawn	Checkd.	Revis. Desc.	App.
1	NEW TOE LINE SHOWN ON DRAWING	8/31/06	ACC	PJH	BWJ	KRM
A	ISSUED FOR BIDS	6/12/06	ACC	PJH	BWJ	KRM



Project Manager	Designed	Checked	Date
	B. JOHNSON	A. COLLINS	JUNE, 2006

Phase IV Levee Repairs
Yuba River
Reclamation District No. 784
Marysville, California
Three Rivers Levee Improvement Authority

Project No.	Scale	Drawn	Date	Project No.	Scale	Drawn	Date
201064-36522	AS NOTED	A. COLLINS	JUNE, 2006	201064-36522	AS NOTED	A. COLLINS	JUNE, 2006

YUBA RIVER
PLAN AND PROFILE
STATION 93+00 TO 105+00
Drawing No. C-06
Issue A