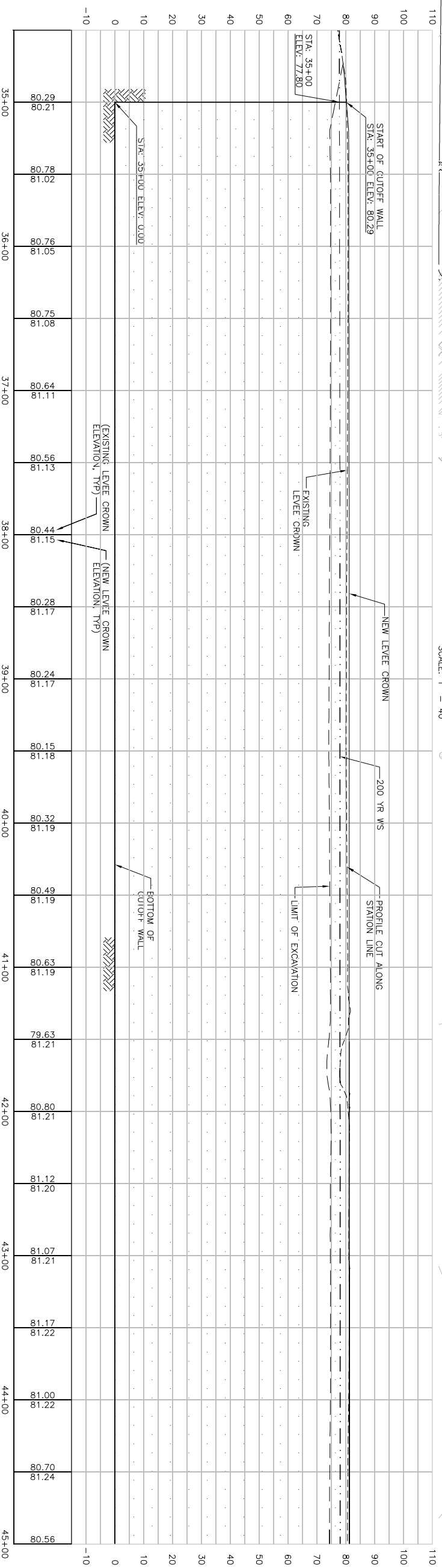


PLAN
 SCALE: 1" = 40'

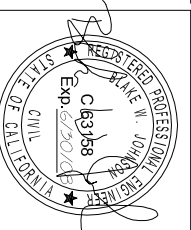


PROFILE
 HORIZ: 1" = 40'
 VERT: 1" = 20'

NOTES:

1. STRIP WATERSIDE SLOPE 6" FROM STA. 37+00 TO STA. 105+00.
2. REMOVE AND DISPOSE OF TOP ONE FOOT OF LEVEE CROWN MATERIAL FROM STA. 35+00 TO STA. 51+00.
3. SEE DWG C-08 FOR STATION LINE & CURVE DATA.

Issue No.	1	NEW TOE LINE SHOWN ON DRAWING	8/31/06	ACC	FJH	BWJ	KRM
Issue Description	A	ISSUED FOR BIDS	6/12/06	ACC	FJH	BWJ	KRM
Drawn							
Checked							
Designed							
Project Manager							
Designed	B. JOHNSON	Phase IV Levee Repairs Yuba River Reclamation District No. 784 Marysville, California					
Checked	A. COLLINS	Three Rivers Levee Improvement Authority					
Date	JUNE, 2006						
Scale	AS NOTED						
Project No.	201064-36522						
File Name							
Drawing No.	C-01						
Issue	A						



YUBA RIVER
PLAN AND PROFILE
STATION 35+00 TO 45+00

MATCHLINE FOR CONTINUATION SEE DWG C-02

MATCHLINE FOR CONTINUATION SEE DWG C-02