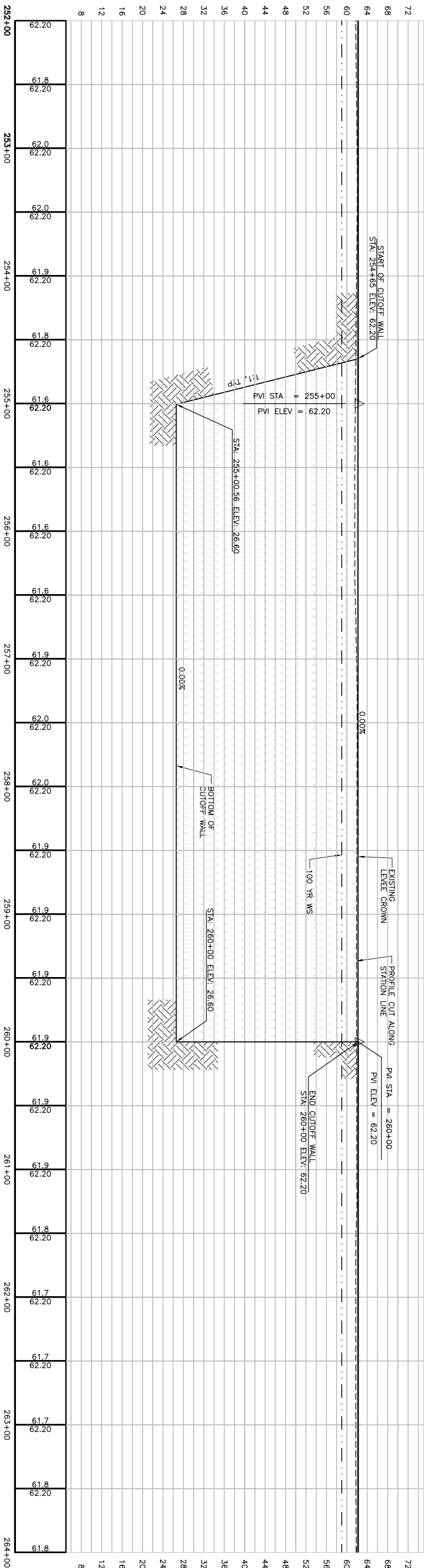
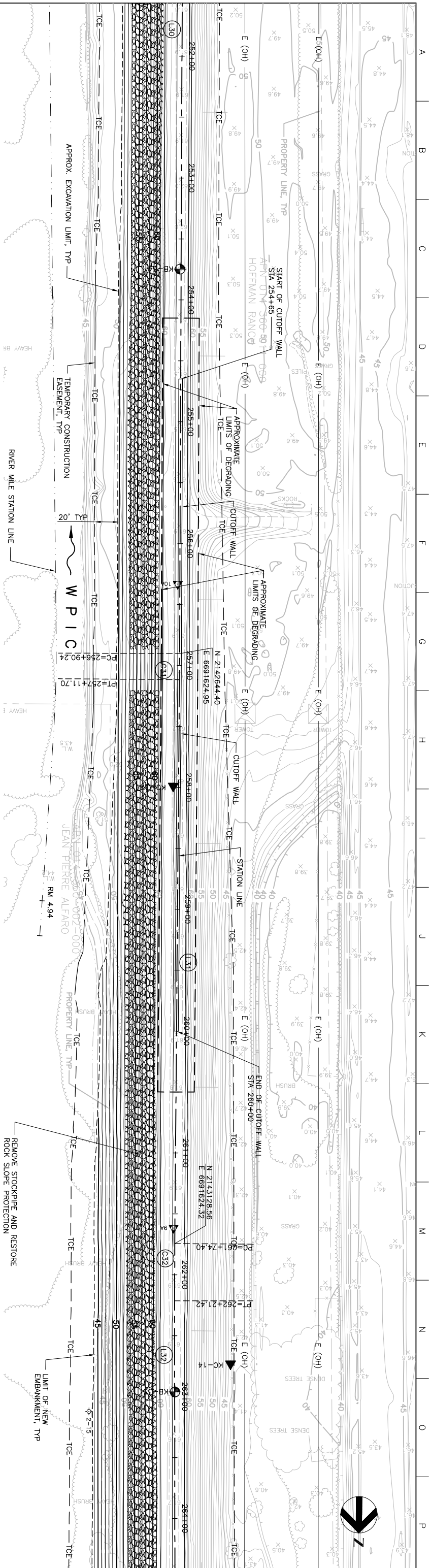


MATCHLINE FOR CONTINUATION SEE DWG C-220



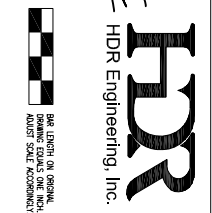
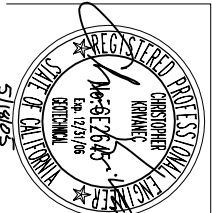
**PROFILE**  
SCALE: HORIZ: 1" = 40'  
VERT: 1" = 10'

**PLAN**  
SCALE: 1" = 40'



MATCHLINE FOR CONTINUATION SEE DWG C-222

Issue No.	0	ISSUED FOR CONSTRUCTION	Date	5/18/05	Drawn	ACC	Checked	PHH	Revised	CEK	Project	KRM
Project Manager	K. MYERS											
Designed	C. KRIVANEC											
Designed	P. HRADLIEK											
Checked	A. COLLINS											
Phase II Levee Repairs Upper Bear River, WP Interceptor Canal and Yuba River Reclamation District No. 784 Marysville, California Three Rivers Levee Improvement Authority												
Date	MAY, 2005		Project No.	201064-19703		File Name	C221.DWG		Drawing No.	C-221		
Scale	AS NOTED		Issue	X								



Project Manager  
K. MYERS  
Designed  
C. KRIVANEC  
Designed  
P. HRADLIEK  
Checked  
A. COLLINS

Phase II Levee Repairs  
Upper Bear River, WP Interceptor Canal and Yuba River  
Reclamation District No. 784  
Marysville, California  
Three Rivers Levee Improvement Authority

**WPIC**  
**PLAN AND PROFILE**  
Date: MAY, 2005  
Project No.: 201064-19703  
File Name: C221.DWG  
Drawing No.: C-221  
Issue: X