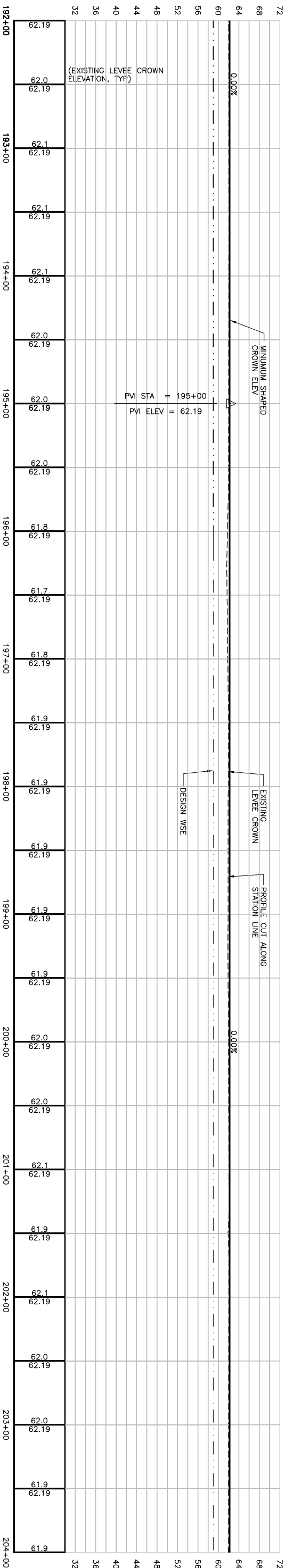
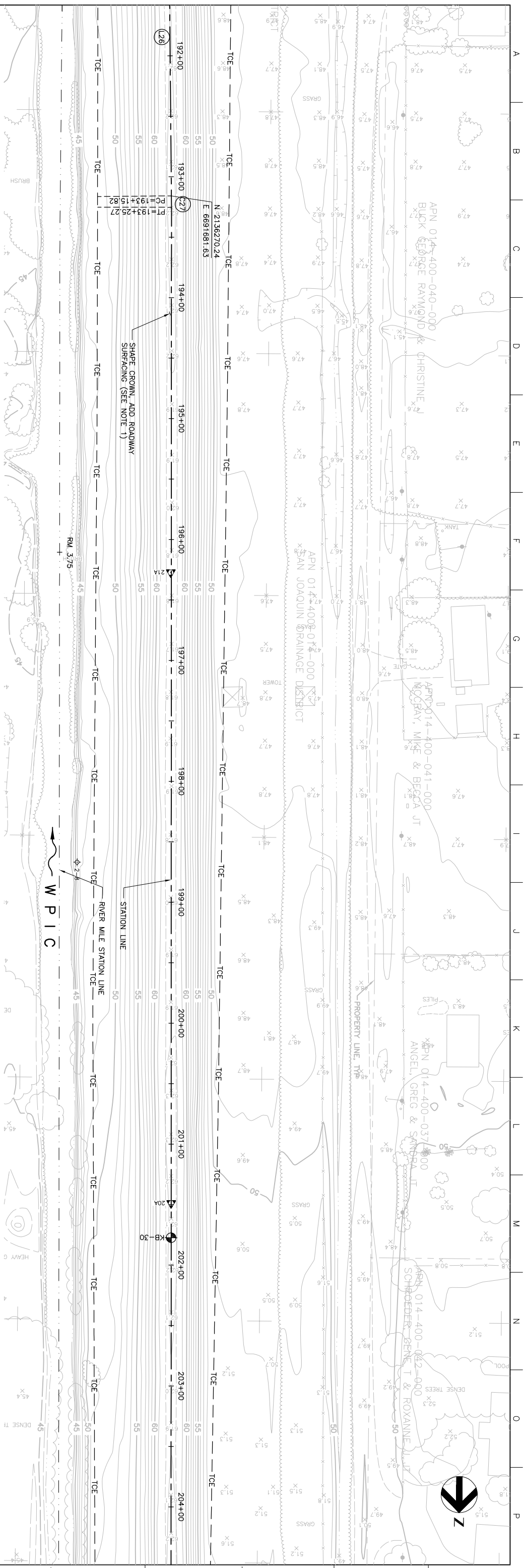


MATCHLINE FOR CONTINUATION SEE DWG C-215



NOTE:  
1. IN AREAS WHERE FULL RAISE NOT REQUIRED, GRADE CROWN ROADWAY TO ACHIEVE MINIMUM SHARED CROWN ELEVATION SHOULD BE MAINTAINED. REMOVE EXISTING ROADWAY AND RECONSTRUCT AT ALL CROWN LOCATIONS PER DETAIL 2. SHEET C-230.

PLAN  
SCALE: 1" = 40'



MATCHLINE FOR CONTINUATION SEE DWG C-217

Issue No.	0	ISSUED FOR CONSTRUCTION	Date	5/18/06	ACC	PHH	CEK	KRM
Design			Drawn					
Checked			Project Manager					
Designed								
Designed								
Checked								

Project Manager	K. MYERS
Designed	C. KRIVANEC
Designed	
Checked	P. HRADLICK
Drawn	A. COLLINS

Phase II Levee Repairs  
Upper Bear River, WP Interceptor Canal and Yuba River  
Reclamation District No. 784  
Marysville, California

Three Rivers Levee Improvement Authority

Date	MAY, 2005	Project No.	201064-19703	Drawing No.	C-216
Scale	AS NOTED	File Name	C216.DWG	Issue	X