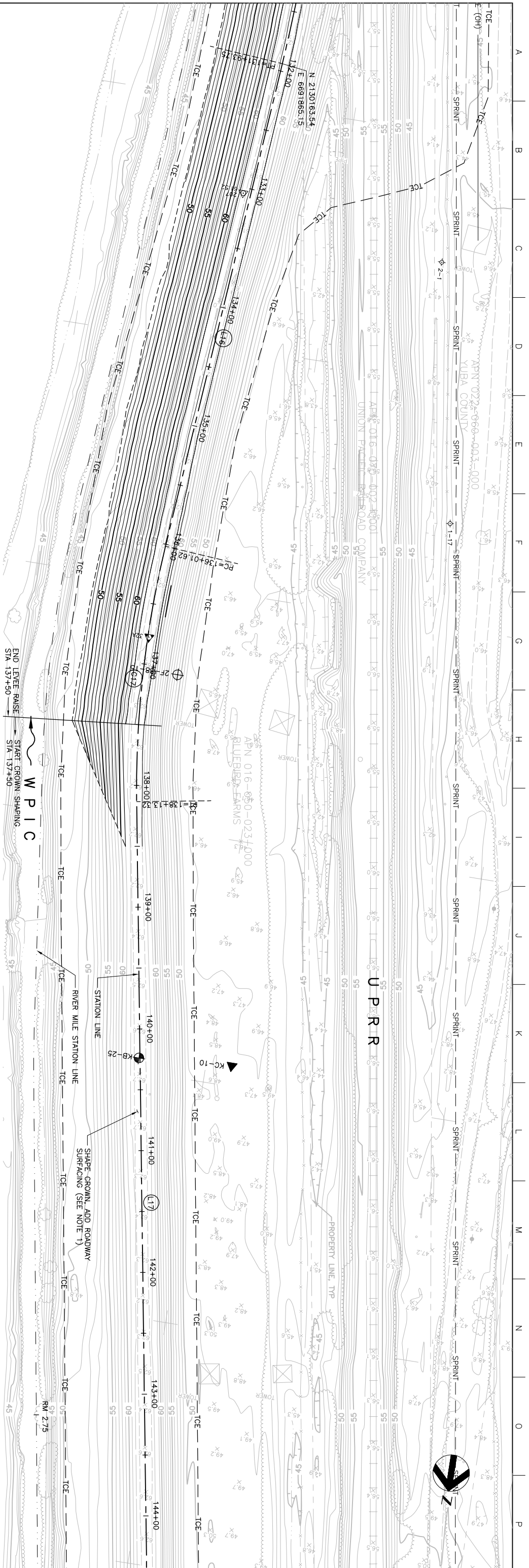


MATCHLINE FOR CONTINUATION SEE DWG C-210

Station	Existing Levee Crown Elevation (TYF)	New Levee Crown Elevation (TYF)
132+00	62.17	61.7
133+00	62.18	61.7
134+00	62.19	61.8
135+00	62.20	61.8
136+00	62.20	61.8
137+00	62.20	62.0
138+00	62.20	62.0
139+00	62.20	62.2
140+00	62.19	62.5
141+00	62.19	62.4
142+00	62.19	62.2
143+00	62.19	62.3
144+00	62.3	62.3

NOTE:  
1. IN AREAS WHERE FULL RAISE NOT REQUIRED, GRADE CROWN ROADWAY TO ACHIEVE MINIMUM SHAPED CROWN ELEVATION SHOWN ON PROFILE. REMOVE EXISTING ROADWAY AND IMPORT SELECT MATERIAL AS NECESSARY. ADD 4 INCHES ROADWAY SURFACING AT ALL CROWN LOCATIONS PER DETAIL 2. SHEET C-230.

PLAN  
SCALE: 1" = 40'



MATCHLINE FOR CONTINUATION SEE DWG C-212

PROFILE  
SCALE: HORIZ: 1" = 40'  
VERT: 1" = 10'

Issue No.	0	ISSUED FOR CONSTRUCTION	Date	5/18/06	ACC	PH	CEK	KRM
Description			Drawn					

Project Manager	K. MYERS
Designed	C. KRIVANEC
Designed	P. HRADLICK
Checked	A. COLLINS

Phase II Levee Repairs  
Upper Bear River, WP Interceptor Canal and Yuba River  
Reclamation District No. 784  
Marysville, California

Three Rivers Levee Improvement Authority

Date	MAY, 2005	Project No.	201064-19703	Drawing No.	C-211
Scale	AS NOTED	File Name	C211.DWG	Issue	X