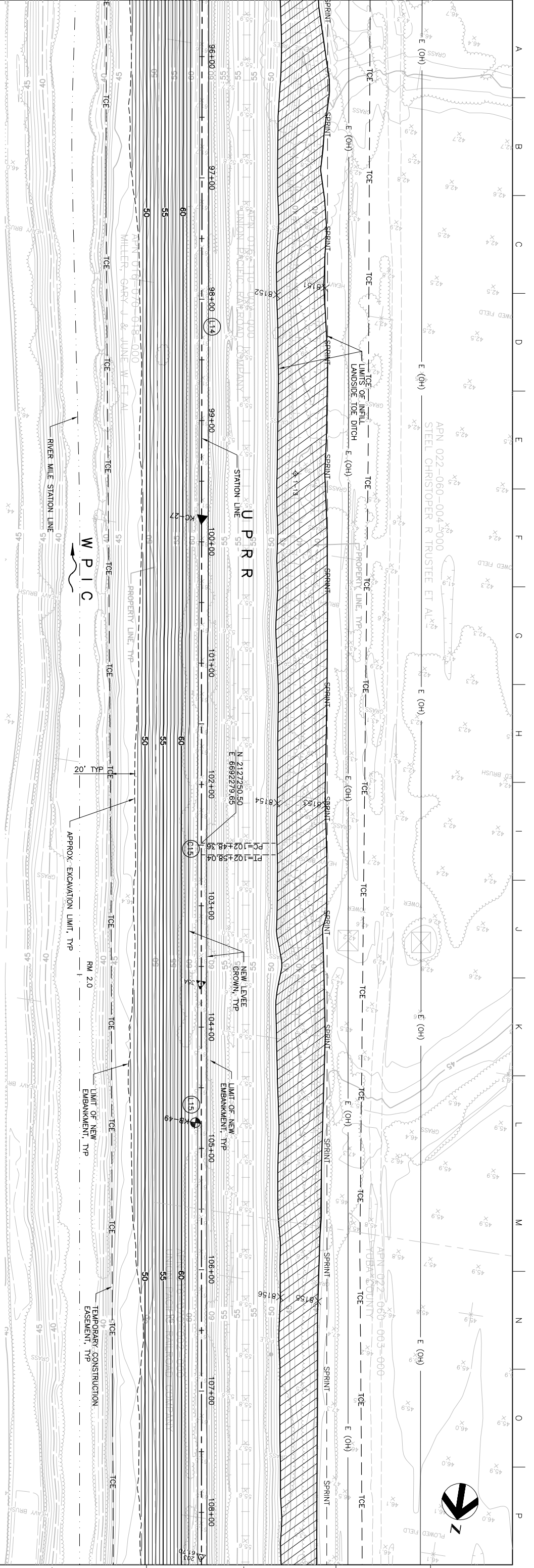


MATCHLINE FOR CONTINUATION SEE DWG C-207

Station	Existing Levee Crown Elevation (TYF)	New Levee Crown Elevation (TYF)
96+00	62.16	61.3
97+00	62.16	61.4
98+00	62.16	61.5
99+00	62.16	61.5
100+00	62.16	61.5
101+00	62.16	61.5
102+00	62.16	61.5
103+00	62.16	61.3
104+00	62.16	61.2
105+00	62.16	61.3
106+00	62.16	61.4
107+00	62.16	61.4
108+00	62.16	61.4

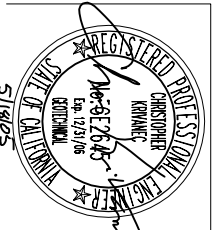
MATCHLINE FOR CONTINUATION SEE DWG C-209



PLAN
SCALE: 1" = 40'

PROFILE
SCALE: HORIZ: 1" = 40'
VERT: 1" = 10'

Issue No.	Description	Date	Drawn	Checked	Revised By	Project
0	ISSUED FOR CONSTRUCTION	5/18/05	ACC	PUH	CEK	KRM



HDR
HDR Engineering, Inc.
REGISTERED PROFESSIONAL ENGINEER
CHRISTOPHER KRIVANEC
LICENSE NO. 51945
STATE OF CALIFORNIA

Project Manager	K. MYERS
Designed	C. KRIVANEC
Checked	P. HRADLICK
Drawn	A. COLLINS

Phase II Levee Repairs
Upper Bear River, WP Interceptor Canal and Yuba River
Reclamation District No. 784
Marysville, California
Three Rivers Levee Improvement Authority

WPIC
PLAN AND PROFILE

Date	MAY, 2005	Project No.	201064-19703	Drawing No.	C-208
Scale	AS NOTED	File Name	C208.DWG	Issue	X