

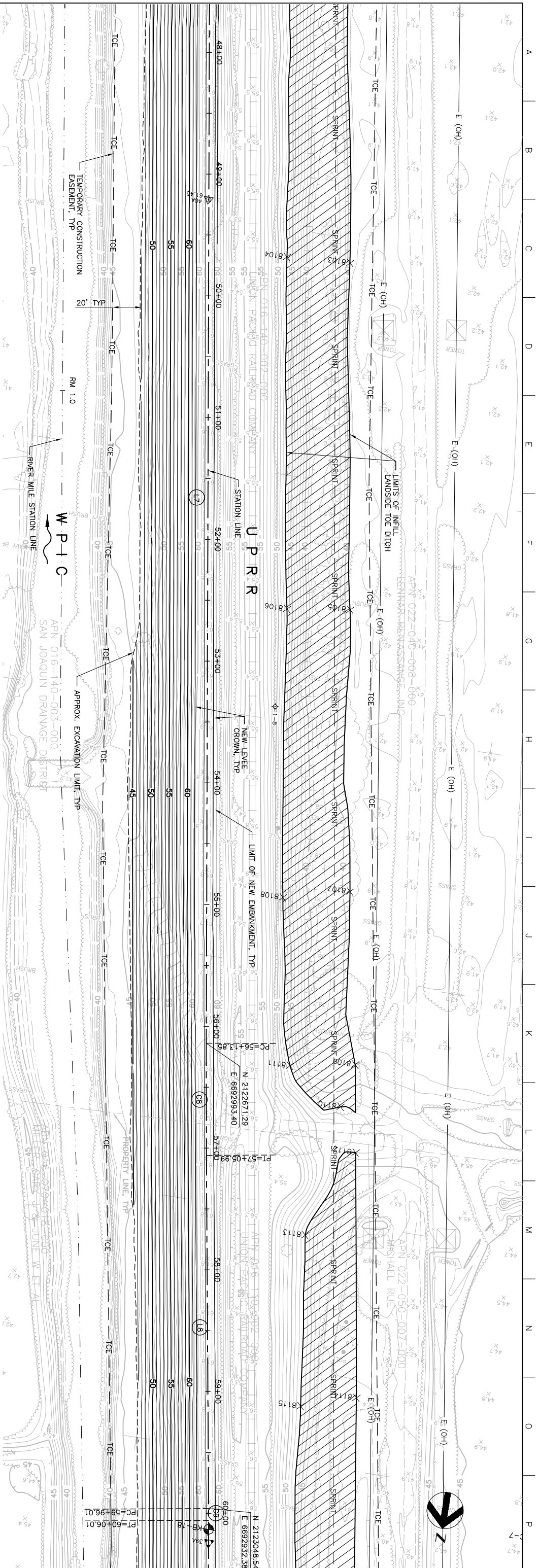
MATCHLINE FOR CONTINUATION SEE DWG C-203

| Station | Existing Levee Crown Elevation (Typ) | New Levee Crown Elevation (Typ) |
|---------|--------------------------------------|---------------------------------|
| 48+00 | 62.16 | 61.4 |
| 49+00 | 62.16 | 61.4 |
| 50+00 | 62.16 | 61.4 |
| 51+00 | 62.16 | 61.5 |
| 52+00 | 62.16 | 61.6 |
| 53+00 | 62.16 | 61.6 |
| 54+00 | 62.16 | 61.6 |
| 55+00 | 62.16 | 61.7 |
| 56+00 | 62.16 | 61.8 |
| 57+00 | 62.16 | 61.9 |
| 58+00 | 62.16 | 61.9 |
| 59+00 | 62.16 | 61.7 |
| 60+00 | 62.16 | 61.7 |

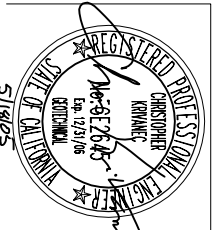
PROFILE
 SCALE: HORIZ: 1" = 40'
 VERT: 1" = 10'

MATCHLINE FOR CONTINUATION SEE DWG C-205

PLAN
 SCALE: 1" = 40'



| Issue No. | Description | Date | Drawn | Checked | Revised | Project |
|-----------|-------------------------|---------|-------|---------|---------|---------|
| 0 | ISSUED FOR CONSTRUCTION | 5/18/05 | ACC | PAH | CEK | KRM |



HDR
 HDR Engineering, Inc.
 300 SOUTH MAIN STREET, SUITE 200
 SACRAMENTO, CALIFORNIA 95811
 (916) 444-2000

| | |
|-----------------|-------------|
| Project Manager | K. MYERS |
| Designed | C. KRIVANEC |
| Checked | P. HRADLICK |
| Drawn | A. COLLINS |

Phase II Levee Repairs
 Upper Bear River, W.P. Interceptor Canal and Yuba River
 Reclamation District No. 784
 Marysville, California
 Three Rivers Levee Improvement Authority

WPIC
PLAN AND PROFILE

| | | | | | |
|-------|-----------|-------------|--------------|-------------|-------|
| Date | MAY, 2005 | Project No. | 201064-19703 | Drawing No. | C-204 |
| Scale | AS NOTED | File Name | C204.DWG | Issue | X |