



# THREE RIVERS LEVEE IMPROVEMENT AUTHORITY

1114 Yuba Street, Suite 218  
Marysville, CA 95901  
(530) 749-7841 Fax (530) 749-6990

## THREE RIVERS LEVEE IMPROVEMENT AUTHORITY

Project Status Report dated June 6, 2008

(Submitted to The Central Valley Flood Protection Board for the June 20, 2008 meeting)

A progress report of the various phases of the Three Rivers Levee Improvement Authority (TRLIA) project is provided in the followings sections of this document. Updates are indicated with italics and underline.

### 1. Funding Update:

- a) TRLIA is planning to prepare a memo to the CVFPB that will describe the proposed changes, if any, that are needed in the TRLIA 2<sup>nd</sup> Implementation Agreement and TRLIA's relationship with the CVFPB. Counsel for TRLIA and Counsel for the Board continue to discuss this issue.
- b) DWR and TRLIA have completed the EIP funding agreement and TRLIA now has a fully executed funding agreement. State construction and real estate funding for the first quarter of work has been received by TRLIA. The local share funding for the first quarter has also been received.
- c) The delay in funding has caused a significant challenge to our schedule especially in regards to acquiring the land needed for construction of the new levee. TRLIA continues to evaluate the schedule implications from the delay in State funding and Corps permitting in conjunction with the federal permitting issues described in 2b2)d) below.

### 2. Levee Design and Construction Work:

#### a. **Phase 4 – Yuba River Levee between Simpson Lane and the Goldfields:**

- 1) Design on the erosion problem that exists just downstream of the Goldfields has been placed on hold until agreement on the water surface profiles along this reach of the levee can be reached with the Corps of Engineers. TRLIA has completed the hydraulic analysis of the Upper Yuba River and is coordinating results with the Corps of Engineers. TRLIA plans to initiate design in this reach of the Yuba in early July.

**b. Phase 4 – Feather River Levee between Bear and Yuba Rivers:**

**1) Segment 1 & 3:**

- a) Segment 1: Nordic Inc has mobilized and begun work.
- b) Segment 3: Nordic Industries, Inc. continued with levee work for this segment of levee.

A large concrete obstruction blocked construction of the slurry wall in one location. This obstruction was located fifteen feet in the foundation of the levee. It has been removed and the levee is being rebuilt in this location. The slurry wall will be placed at this location after the levee is rebuilt. Information on this obstruction and the plan to address the obstruction were coordinated with the Corps and CVFPB staff.

TRLIA has requested the CVFPB approve a seepage berm as the permanent fix for the Segment 3 trench failure that occurred in 2007. This request is contained in a TRLIA letter that was sent to the CVFPB in early April 2008. This modification has been coordinated with the CVFPB staff and the Corps. While approval of this approach has been coordinated with the Corps staff, formal approval for this modification has not been sent to the CVFPB. TRLIA expects this approval very soon.

**2) Segment 2:**

- a) The phased construction (Part A and B) encroachment permit for Segment 2 was issued on April 7, 2008.
- b) TRLIA has awarded portions of the foundation and embankment work (see attached graphic for modified schedule B). Additional levee work will be added to the Teichert contract as landowner access clearances are obtained. The delay in funding has hampered the acquisition of real estate which in turn limits the area where work can begin.
- c) A Groundbreaking Ceremony for the Segment 2 Setback Levee was held on May 28, 2008. The Ceremony was well attended and was very successful. Ben Carter attended on behalf of the Central Valley Flood Protection Board. The TRLIA web site ([www.trila.org](http://www.trila.org)) now has a link to Segment 2 construction activities including the media coverage of the groundbreaking ceremony.
- d) The schedule for completion of the Setback Levee is being impacted by the delay in the Corps federal permit approval. Corps HQ has directed that Section 408 approval be obtained before any Section 404 permits are issued for the setback levee construction. The Corps has determined that an EIS is required to support the Section 404 and 408 approvals. TRLIA is working with the Corps to prepare and process an EIS. The schedule to complete this

process and sign a Record of Decision (ROD) is September 20 to October 19, 2008 although we are approximately 6 weeks behind schedule. Extensive comments were received on the Administrative Draft EIS. The EIS is being revised to address these comments and a Draft EIS for public review is expected by the end of June. TRLIA continues to work with the Corps to expedite the EIS approval process to make up lost time.

**3. Levee utility crossings to meet current Corps and State of California Criteria:**

TRLIA continues to work on updating utility crossings as a condition of certification from the Corp of Engineers. The following action continue to be taken: Missing crossing markers at the utilities are being investigated and will be replaced as needed. Missing utility markers have been identified. Letters were sent to Sprint and AT&T asking them to field mark their utilities. Neither AT&T nor Sprint have provided markers at the locations required. In order to ensure that markers are placed, TRLIA has installed these markers at the two locations and will be requesting reimbursement from Sprint and AT&T.

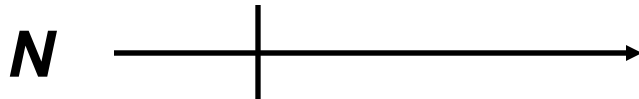
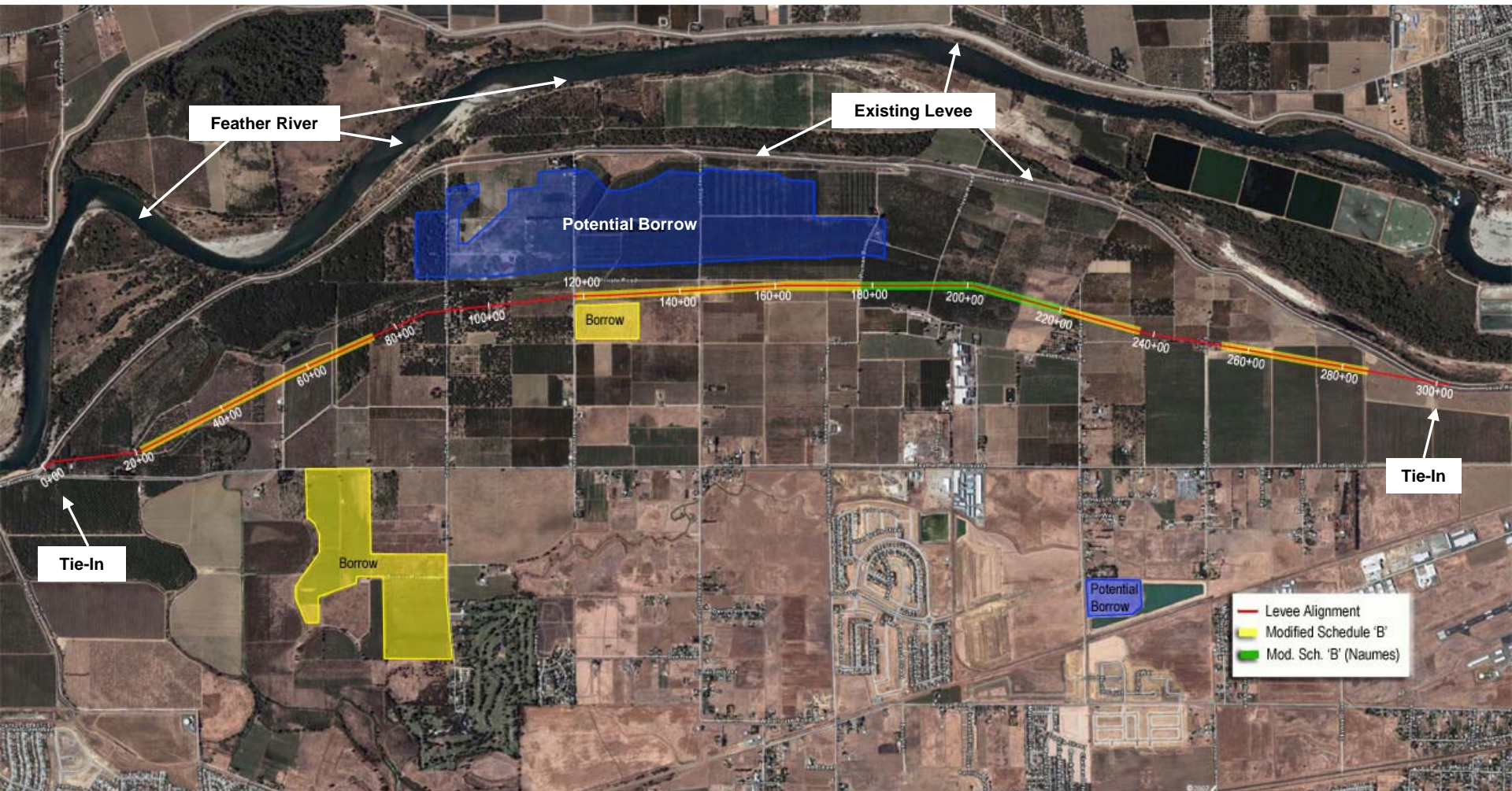
**4. Building Permits Issued in Plumas Lake Specific Plan Area and North Arboga Study Area in 2007:**

- a) The attached table and graph provides information related to residential building permits issued for the Plumas Lake Plan Area (PLSPA) and the North Arboga Study Area (NASA) within Yuba County in 2008.
- b) As shown in the table, a total of 5 building permits have so far been issued in 2008. No permits were issued in May of 2008.

Attachments:

1. Modified Schedule B graphic
2. Building permit graphic
3. Building permit table

# Feather River EIP Modified Schedule B



**Plumas Lake Specific Plan Area and North Arboga Study Area - Building Permits Issued in 2008**

Developer/Builder	Monthly Building Permits Issued for Plumas Lake and North Arboga Study Area												Total (By Builder)
	Jan-08		Feb-08		Mar-08		Apr-08		May-08		Jun-08		
	Plumas	NASA	Plumas	NASA	Plumas	NASA	Plumas	NASA	Plumas	NASA	Plumas	NASA	
KB Homes North Bay													0
Cresleigh Homes													0
Forecast Homes/K Hovnanian	3												3
Homes by Towne/HBT Constr.													0
Beazer Homes													0
California Homes/Home Builders													0
Cassano Kamilos Homes													0
D.R. Horton/Western Pacific													0
Other		1				1							2
<b>Monthly Totals</b>	<b>4</b>		<b>0</b>		<b>1</b>		<b>0</b>		<b>0</b>		<b>0</b>		<b>5</b>

As of May 31, 2008

**Total Permits for 2008 5**

### Building Permits Issued in TRLIA Project Area

