

THREE RIVERS LEVEE IMPROVEMENT AUTHORITY AGENDA

No other business shall be conducted at this meeting. The public shall have an opportunity to address the Authority only with respect to items set forth in this agenda. Each individual or group will be limited to no more than five minutes. Prior to this time, speakers must fill out a "Request to Speak" card and submit it to the Clerk of the Board

AUGUST 29, 2006 – SPECIAL MEETING

Yuba County Government Center
Board of Supervisors' Chambers
915 Eighth Street, Suite 109A
Marysville, California*

Unless otherwise indicated

8:30 A.M. I CALL TO ORDER

II ROLL CALL – Directors Rick Brown, Mary Jane Griego, Dan Logue, Richard Webb

III ACTION ITEMS

- A. Approve term sheet pledging up to \$10 million from Road Impact Fees to provide temporary cash flow needs pertaining to South Yuba Basin levee improvements, contingent upon all other conditions being met pertaining to the Second Advance Funding Agreement and direct Auditor-Controller to perform disbursements.
- B. Accept \$2,000,000 Gap Loan from Yuba County Water Agency under terms contained on term sheet and delegate authority to Executive Director to take all actions necessary in support of loans.
- C. Adopt resolution approving addendum to the final environmental impact report for the Bear River Western Pacific Interceptor Canal Levee Improvement Project.

IV ADJOURN



06-500



**THREE RIVERS LEVEE
IMPROVEMENT AUTHORITY**

915 Eighth Street, Suite 115
Marysville, California 95901
(530) 749-7575
(530) 749-7312 Fax

**The County of Yuba
OFFICE OF THE BOARD OF SUPERVISORS**

915 8th Street, Suite 109
Marysville, California 95901
(530) 749-7510
(530) 749-7353 Fax

August 29, 2006

TO: Board of Supervisors & Three Rivers Levee Improvement Authority
FROM: *RB* Robert Bendorf, County Administrative Officer & Paul Brunner, TRRIA
Executive Director
By Randy Margo, Assistant County Administrator *RM*
SUBJECT: Bridge Loan to Three Rivers Levee Improvement Authority (TRLIA) *25 Aug 16*

Recommended Action

Approve attached term sheet pledging up to \$10 million from Road Impact Fees collected for the Plumas Lake Specific Plan area to provide for temporary cash flow needs pertaining to South Yuba Basin levee improvements, contingent upon all other conditions being met pertaining to the Second Advance Funding Agreement.

Purpose of Recommended Action

To ensure timely payment for levee construction work and related expenses to keep the accelerated construction program on track, staff recommends a bridge loan of up to \$10 million. This loan would come from impact fees already paid by Plumas Lake developers into the road program.

Discussion

Reimbursement for levee expenses paid by the California Department of Water Resources has been taking 3-4 months. Consequently, timely payment of levee construction work is an important concern as Phases 2 and 3 levee work is in full swing and Phase 4 levee work is about to begin on the Yuba River levee.

In order to ensure that the accelerated construction schedule can continue as planned, staff recommends that impact fees already paid by Plumas Lake developers into the road program be loaned on a temporary basis as needed to cover any cash shortfalls that might be experienced by the construction program during the next six months. The loan amount would not exceed \$10 million with loan disbursements subject to approval by the County's Finance Review Committee. Any loans made from this source would be repaid by the California Department of Water Resources' Proposition 13 funds. Loans made are intended to be repaid no later than February 28, 2007, so that work on the Algodon Interchange can commence.

Committee Action

Due to time constraints this item was not taken to committee for action.

Fiscal Impact

Under the terms of the bridge loan, the Road Fund would be reimbursed any lost interest at the current rate. If repayment of any significant loans did not occur in a timely manner, it could affect the schedule and perhaps the cost of the Algodon interchange work for the scheduled to begin next spring. Any cost increase for roads would be borne by developers within the Plumas Lake Specific Plan.

TERM SHEET FOR TRLIA \$10 MILLION BRIDGE LOAN

Purpose:	To cover potential cash flow needs and unanticipated TRLIA levee construction work for Phases 2, 3, and 4. This loan would be used only on an as needed basis. Phases 2 and 3 work are eligible for State reimbursement under existing contracts with the Department of Water Resources; however, expenses for Phase 4 work are not eligible for reimbursement at this time.
Loan Amount:	\$10,000,000
Interest Rate:	Pool Rate as established by Yuba County to accrue only as to funds actually drawn by TRLIA.
Fund Availability:	Funds from Plumas Lake Road Impact Fee Program are to be placed in a segregated account, which may be called upon by TRLIA for use for Phases 2, 3, and 4 levee work. TRLIA agrees to call upon these funds only after use of all Landowner funds from the first and second capital calls are made, and those funds received from Department of Water Resources Proposition 13 reimbursements are utilized.
Fund Repayment:	Funds made available by Yuba County would be repaid from Department of Water Resources Proposition 13 reimbursements.
Repayment Timing:	Complete repayment would occur no later than February 28, 2007. Periodic payments will be made based on the availability of Department of Water Resources Proposition 13 funds.
Loan Process:	TRLIA Executive Director would meet with County Financial Review Committee to determine the amount and timing of loan disbursements. TRLIA Board members would be informed of any loan disbursements.
Value of Loan:	This loan allows TRLIA to address potential cash flow issues and unanticipated expenses pertaining to levee work being performed between now and the end of 2006.



THREE RIVERS LEVEE IMPROVEMENT AUTHORITY

Government Center
915 Eighth Street, Suite 115
Marysville, CA 95901-5273
(530) 749-7841 (530) 749-7884 Fax

August 29, 2006

TO: TRLIA Board
FROM: Paul G. Brunner, TRLIA Executive Director
SUBJECT: Gap Loan from Yuba County Water Agency

Paul G. Brunner
25 Aug 2006

Recommended Action

Accept \$2,000,000 loan from Yuba County Water Agency under terms contained on term sheet and delegate authority to Executive Director to take all actions necessary in support of loans.

Purpose of Recommended Action

The Second Implementation Agreement requires that a \$20,000,000 first capital call be available to TRLIA in order to proceed under the agreement. The unexpected and additional costs for Feather River levee repair at Pump Station #3 resulted in some members of the Landowner group declining to participate. This resulted in increased costs for the remaining participating Landowners. Due to the short period in which these additional costs need to be covered for the first capital call, there is a need for YCWA to loan funds toward the first capital, which will be repaid from an increased second capital call to be covered by the participating Landowners.

Discussion

This \$2,000,000 represents a loan to the Levee Improvement Program. YCWA would be entitled to priority repayment. In the event that any landowner elects to become an Original Participant during the Open Enrollment Period, the funds from such election would first be used to satisfy any outstanding obligation to YCWA under the loan. In the event that any such obligation to YCWA remains at the time of the second Capital Call, the second Capital Call would be increased by the amount necessary to repay such obligation to YCWA. The various documents showing the financial obligations of the landowners have been revised to show this repayment. In addition, the funds available under this loan would be used only after funds available to TRLIA from other sources (including the \$10,000,000 Bridge Loan from the county) were first used.

Fiscal Impact

By accepting this loan, and thus allowing the Second Funding Agreement to proceed, TRLIA will have the funding to both complete Phases 2 and 3 and proceed with Phase 4. Without this loan, and the ability of the Second Funding Agreement to proceed, TRLIA risks having expenses for Phases 2 and 3 for which it has no funds.

**Term Sheet for YCWA Participation in
Three Rivers Levee Improvement Authority
Second Funding Agreement**

Purpose:	The unexpected and additional costs for Feather River levee repair at Pump Station #3 resulted in some members of the Landowner group declining to participate. This resulted in increased costs for the remaining participating Landowners. Due to the short period in which these additional costs need to be covered for the first capital call, there is a need for YCWA to loan funds toward the first capital, which will be repaid from an increased second capital call to be covered by the participating Landowners.
Loan amount:	\$2,000,000.
Fund availability:	Funds to be placed in a segregated account, that may be called upon by TRLIA for use for Yuba River Phase 4, as required by the Second Implementation Agreement. TRLIA agrees to only call upon these funds after use of all Landowner funds, Proposition 13 reimbursement funds, and cash-flow line of credit being provided by Yuba County.
Fund repayment:	Funds made available by YCWA would be reduced/repaid from one of two sources: (1) any fees paid by additional Landowners that join the program during the open enrollment period would reduce, dollar for dollar, the funds made available by YCWA, and (2) any funds not otherwise reduced, but actually withdrawn from the segregated account, would be repaid out of the Second Capital Call, which will be increased by this amount.
Repayment timing:	Repayment would be made from the Second Capital Call, which is currently scheduled for the third week of November. Repayment of these funds would be a higher priority than repayment of the cash-flow line of credit being provided by Yuba County.
Value of loan:	This loan of \$2,000,000 helps assure raising the necessary funds to perform the Yuba River Phase 4 work, currently estimated at approximately \$14,000,000.



THREE RIVERS LEVEE IMPROVEMENT AUTHORITY

GOVERNMENT CENTER – 915 8TH STREET, SUITE 115
MARYSVILLE, CA 95901-5273
(530) 749-7575 (530) 749-7312 Fax

August 22, 2006

TO: Three Rivers Levee Improvement Authority Board
FROM: Ric Reinhardt, Program Manager *Ric Reinhardt*
SUBJECT: Consider Passing Resolution to Adopt an Addendum to the Final
Environmental Impact Report (FEIR) for the Bear River and Western
Pacific Interceptor Canal Levee Improvements Project

Recommended Action

Consider passing attached resolution to adopt the Addendum to the FEIR for the Bear River and Western Pacific Interceptor Canal Levee Improvements Project.

Discussion

The Corps of Engineers raised a concern about shallow sand layers in the foundation of the Bear River north levee on both sides of Highway 70. To address this concern and achieve certification of the levee, it has been decided to construct seepage berms on the landside of the levee on both sides of Highway 70. The westside berm is approximately 10 feet high, 75 feet wide and 350 feet long. The eastside berm is approximately 10 feet high, 50 feet wide and 400 feet long. These project refinements required consideration of environmental impacts. These impacts have been assessed and described in an addendum to the FEIR. This addendum updates the FEIR and fulfills the CEQA requirements for the proposed action.

Fiscal Impact

No fiscal impact would occur from adoption of this Resolution.

**BEFORE THE THREE RIVERS LEVEE IMPROVEMENT AUTHORITY
OF THE COUNTY OF YUBA**

IN RE:)
) **RESOLUTION No. _____**
)
) **RESOLUTION TO ADOPT AN ADDENDUM TO THE**)
) **FINAL ENVIRONMENTAL IMPACT REPORT (FEIR)**)
) **FOR THE BEAR RIVER AND WESTERN PACIFIC**)
) **INTERCEPTOR CANAL LEVEE IMPROVEMENTS**)
) **PROJECT**)
 _____)

WHEREAS, the Three Rivers Levee Improvement Authority proposed the Upper Bear River and Western Pacific Interceptor Canal (WPIC) Levee Improvements Project to bring deficient levee sections up to standards to achieve certifiable 100-year flood protection. Specifically, most of the northern levee of the Bear River and several reaches of the WPIC have insufficient height to provide the desired level of flood protection. Additionally, some levee reaches have problems associated with levee stability and susceptibility to erosion. The flood control improvements would include seepage protection, reconstruction of levee reaches that failed as a result of 1997 overtopping, erosion protection, the relocation of Pump Station No. 6, and raising the height of the levee.

WHEREAS, the Board ratified the certified Bear River and WPIC Levee Improvements Project FEIR, and adopted the Findings of Fact and a Mitigation Monitoring Program for the Project which were all in compliance with the California Environmental Quality Act (CEQA) on August 12, 2004; and,

WHEREAS, the Three Rivers Levee Improvement Authority modified the project as an Addendum to the FEIR to include two seepage berms along the Bear River Levee just east and west of Highway 70; and,

WHEREAS, the Authority Board of Directors must adopt the Addendum to the FEIR in order to begin implementation of the modifications of the Project.

NOW, THEREFORE, BE IT IS RESOLVED BY THE BOARD OF DIRECTORS OF THE THREE RIVERS LEVEE IMPROVEMENT AUTHORITY AS FOLLOWS:

1. The foregoing recitals are true and correct.
2. The Addendum to the FEIR (SCH#2004032118) for the project was prepared in accordance with CEQA. In addition, the Findings of Fact and Mitigation and Monitoring Program of the FEIR formally adopted August 12, 2004 are appropriate for the actions proposed in the Addendum.
3. The Authority Board of Directors authorizes and directs Authority staff to prepare and file a CEQA Notice of Determination within 5 working days following the date of adoption of this Resolution with the County Clerk of the County of Yuba and with the State of California.
4. By adopting this Resolution, the actions of the Addendum are hereby approved.

PASSED AND ADOPTED at a regular meeting of the Board of Directors of
the Three Rivers Levee Improvement Authority, on the ____ day of September
2006, by the following vote:

AYES:

NOES:

ABSENT:

Chairperson

ATTEST: DONNA STOTTLEMEYER
Clerk of the Board of Supervisors

By _____

APPROVED AS TO FORM


DANIEL G. MONTGOMERY
County Counsel



Jones & Stokes

Addendum to Certified Environmental Impact Report SCH number 2004032118

Lead Agency: Three Rivers Levee Improvement Authority
915 Eighth Street
Marysville, CA 95901

Contact: Brian D. Boxer, AICP
Telephone: (916) 325-4800

Project Title: Feather-Bear-WPIC Levee Improvements Project

Project Location (nearest town): Olivehurst, Yuba County

Project Background: The Three Rivers Levee Improvement Authority (TRLIA) is a joint powers authority with the mission of advancing the flood safety of Yuba County, California. TRLIA's member agencies include Reclamation District 784 (RD 784) and the County of Yuba (County). The county is subject to seasonal flood threat from many rivers and creeks, including the Yuba River, Feather River, Bear River, Western Pacific Interceptor Canal (WPIC) and tributary drainages. Because of this flood risk, many local rivers have been confined by constructed levees.

The U.S. Army Corps of Engineers (USACE) has established criteria for levees that specify the height, width, permeability standards, and other factors needed to provide adequate protection for a given hydrologic event (stage and discharge) based on geotechnical, hydraulic, and hydrologic conditions. Most of the levee systems in Yuba County were built during the 1920's using construction practices of that era. Recent studies conducted by USACE (January 1990) and Kleinfelder (November 2003) have concluded that substantial segments of area levees do not meet current USACE protection standards for a 100-year event. Insufficient height, susceptibility to through-seepage and under-seepage, and susceptibility to erosion need to be remedied to meet the USACE criteria.

Deficiencies in area levee segments have been recently demonstrated by the floods of 1986 and 1997. In 1986, approximately 10,700 acres were inundated, more than 4,000 homes and businesses were damaged or destroyed, and one human life was lost. In 1997, approximately 16,000 acres were inundated, more than 850 homes and businesses were damaged or destroyed, and three human lives were lost.

TRLIA developed the Feather-Bear-WPIC Levee Project (project) to modify the levee system in southern Yuba County to address the deficiencies described above, as well as the backwater effects and rise in river stages from the lack of floodway capacity near the confluence of the Bear and Feather Rivers. The ultimate goal is to maintain and increase flood protection to a level greater than the calculated 200-year event, consistent with goals of The Reclamation Board of the State of California (Rec Board), which oversees modifications to federal project levees. The objectives of the project are to:

- provide increased flood protection greater than the calculated 100-year flood event in the overall RD 784 area, and meet 200-year standards where improvements are implemented

(i.e., where levee work is endeavored, it will meet or exceed criteria for the calculated 200-year flood event):

- avoid increasing downstream flow and stage during peak-flow conditions; and
- enhance and restore fish, wildlife, and riparian habitat.

Original Project Description: The project was needed to bring deficient levee sections up to standards to achieve the project objectives. Specifically, most of the northern levee of the Bear River and several reaches of the WPIC have insufficient height to provide the desired level of flood protection. Additionally, some levee reaches have problems associated with levee stability and susceptibility to erosion. The proximity of Pump Station No. 6, adjacent to the Bear River north levee, decreased the stability of this levee. The project design relocates the pump north of its existing location. Other flood control improvements include seepage protection, reconstruction of levee reaches that failed as a result of 1997 overtopping, erosion protection, and raising the height of the levee. The levee improvements include segments of the Bear River north levee and WPIC west levee, including filling land-side depressional areas, installing slurry cutoff walls, raising and widening levees, and installing erosion (Figure 1).

Previously Certified EIR: An environmental impact report (EIR) was prepared to evaluate potential project effects and was circulated for public review (SCH number 2004032118). TRLIA certified the final EIR in August 2004 and TRIIA adopted the project in March 2005.

Refinements to the Project: Since certification of the final EIR, the design of the project has been slightly modified based on additional engineering analysis and USACE recommendations. The revised element of the project description is provided in the following section and shown in Figures 1 and 2.

At the landside of the Bear River levee, between stations 141+00 and 144+50 and between stations 145+00 and 150+00, seepage berms need to be constructed to alleviate under- and through- seepage concerns (Figure 2). The berms would be located west and east of State Route 70 (SR 70). The berm west of SR 70 would be approximately 75 feet wide and 350 feet long. The berm east of SR 70 would be approximately 400 feet long and on average 50 feet wide. Construction of the seepage berm would occur between October 1, 2006 and October 1, 2007. Eight thousand four hundred cubic yards (cy) of fill would be imported from a permitted site.

A complete technical description and analysis of resultant environmental effects were included in the certified EIR; however, not specifically for this levee segment. This technical addendum applies the adopted findings and mitigation from the certified EIR for the proposed action to this levee segment. It should be noted that this refinement of the project does not constitute a change in the study area or type of improvements covered in the certified EIR, as this area was subject to other treatments.

Analysis of Refinements: The impacts associated with the design refinements of the Bear River would result in the removal of six valley oak trees. The construction of the berm west of SR 70 would require the removal of three valley oak trees and the construction of the berm east of SR 70 would require the removal of three valley oak trees. As presented in the certified EIR, the project will have several significant impacts on vegetation including those on valley oak forest. All of these significant impacts

can be mitigated to a less-than-significant level through the implementation of mitigation measures already adopted by TRLIA. In 2006, a site visit was conducted at the seepage berm site and no raptor's nests were observed in the trees proposed for removal.

The impact of this loss of valley oak woodland would be mitigated as part of the restoration plan in the setback and floodplain area of the Bear River. The setback restoration area would create 298 acres of valley oak forest. The original project affected 0.81 acres of valley oak woodland thus, the plantings within the setback restoration area would adequately mitigate for the loss of the six valley oak trees due to seepage berm construction.

The work at the Bear River levee would not result in any other resource effects beyond those already analyzed in the certified EIR. The Mitigation Measures listed below were imposed on the project as part of the original approval and would serve to mitigate any additional effects to a less-than-significant level; thus there is no need for further environmental review.

Mitigation Measure VEG-MM-1: Minimize Impacts on Sensitive Biological Resources.

TRLIA will include the following measures in the project construction conditions to minimize indirect impacts on sensitive natural communities.

1. TRLIA will provide a biologist/environmental monitor who will be responsible for monitoring implementation of the conditions in the state and federal permits (i.e., CWA Section 401, 402, and 404; ESA Section 7; Fish and Game Code Section 1601; Storm Water Pollution Prevention Plan [SWPPP]; and EIR mitigation measures).
2. The biologist/environmental monitor will flag the locations of any special-status plants recorded during preconstruction surveys that are in proposed construction areas but outside of the levee improvement footprints.
3. TRLIA will provide a worker environmental training program for all construction personnel prior to the start of construction activities. The program will educate workers about special-status species and sensitive habitats present and adjacent to the site and also about the regulations and penalties for unmitigated impacts on these sensitive biological resources.
4. Following construction at all levee improvement sites, the construction contractor will remove all trash and construction debris.
5. TRLIA will compensate for the loss of valley oak forest caused by levee improvements. Although the valley oak forest is not considered a riparian community because it is physically and hydrologically disconnected from the floodplain, the vegetation provides similar benefits. Therefore, compensation will include restoring or enhancing riparian habitat at a ratio of 2 acres for each acre affected. The mitigation ratio will ensure long-term replacement of habitat functions and values.

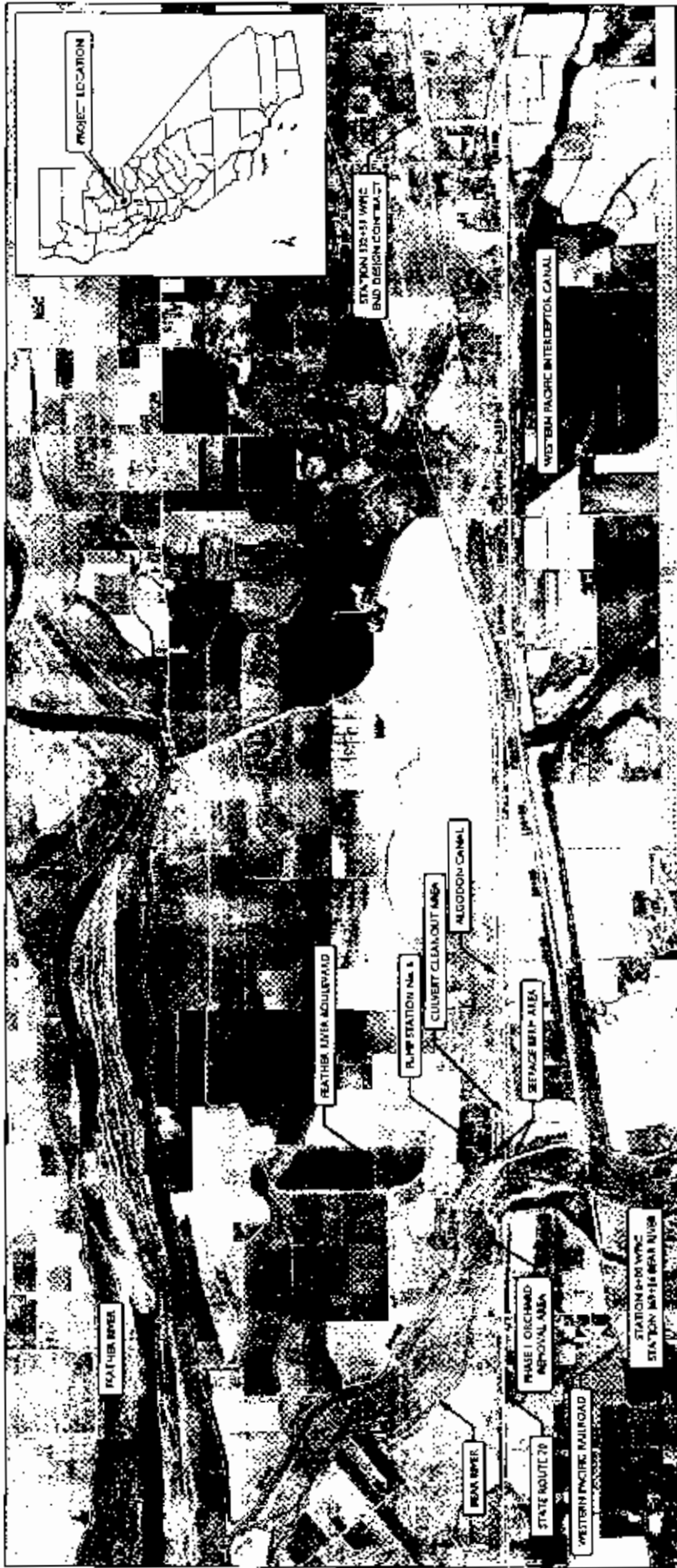
Mitigation Measure WILD-MM-1: Avoid and Minimize Effects on Nesting Birds during Construction and Maintenance.

TRIIA will perform preconstruction surveys to determine whether nesting birds, including migratory birds, raptors, and special-status bird species, are present in or immediately adjacent to the proposed project area, borrow sites, mitigation sites, and associated staging and storage areas. If no nests are found, construction will proceed.

If active nests or migratory birds are found within the boundaries of a construction area, TRIIA will develop appropriate measures and will inform DFG of its actions. Inactive migratory bird nests (excluding raptors) located outside the construction areas will be preserved. If an inactive migratory bird nest is located in these areas, it will be removed before the start of the breeding season (approximately February 1).

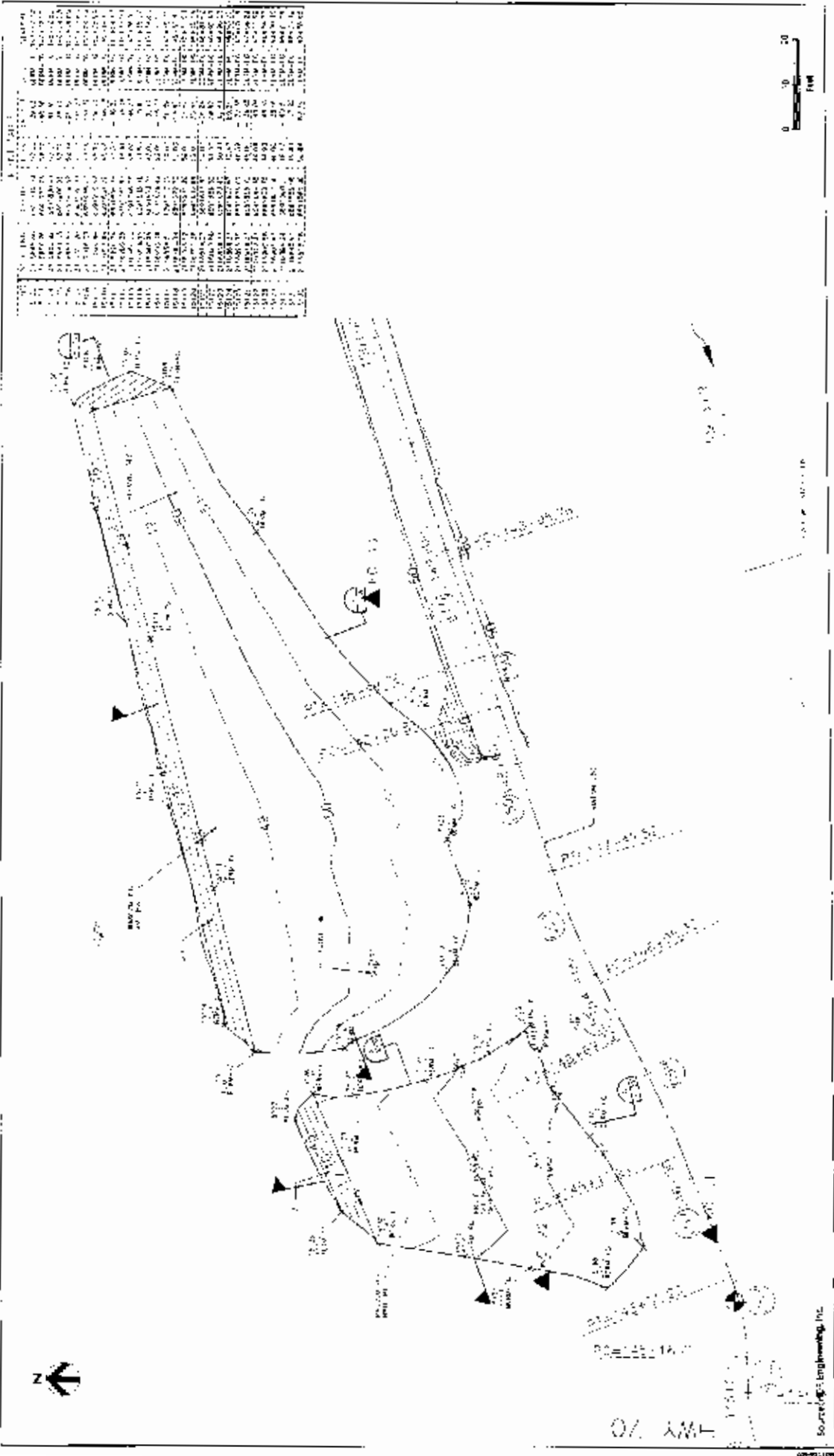
If an active raptor nest is found outside the construction areas, a buffer zone will be created around the nest tree. The recommended buffer, as identified by DFG, is 250 feet (Sections 3503 and 3503.5 of the California Fish and Game Code). A larger buffer zone will be established around Swainson's hawk nest sites, as described under Mitigation Measure WILD-MM-5 in the EIR (Avoid and Minimize Construction-Related Disturbances within 1/2 Mile of Active Swainson's Hawk Nest Sites).

Findings: The refinements to the project are considered minor technical changes and are within the geographic scope and types of actions, effects, and mitigation analyzed in the certified EIR. Pursuant to Section 15164 (e) of the State CEQA Guidelines, in considering the record as a whole, there is no substantial evidence that the refinements to the project design would cause significant new environmental effects or a substantial increase in previously identified significant effects of the project.



ANTICIPATED REPAIRS	SCALE	LEVEL TREATMENT
BEAR 122+00 - 126+00	T-PIEDMONT ELEVATION HEIGHT	RAIL LEVEE RECONSTRUCTION, BASE VIEW, LEVEE CROWN 6.5 FOOT (AVERAGE)
BEAR 126+00 - 128+00	T-PIEDMONT ELEVATION HEIGHT	WATERBIDE IMPROVEMENT ZONE
BEAR 128+00 - 134+00	T-PIEDMONT ELEVATION HEIGHT	RAISE CROWN 1.8 FEET (AVERAGE) BY FULL LEVEL MAKE (LANDSIDE)
BEAR 134+00 - 140+00	UR. SUBGRADE	SET BACK PUMP STATION No. 4 50 FEET FROM EXISTING LOCATION BACK TO SOUTH SIDE OF ALGODON CANAL
BEAR 140+00 - 142+00	BROOKS	TOE ROCK BERM (HIGH WATER CHANNEL)
BEAR 142+00 - 143+15	BROOKS	ROCK SLOPE PROTECTION (LOW WATER CHANNEL)
WVIC 0+00 - 100+00	UNION BASEPAGE HEIGHT	RAIL BOTTOMWAY TRENCH
WVIC 0+00 - 107+52	UNION BASEPAGE HEIGHT	RAISE CROWN 0.8 FOOT (AVERAGE) BY FULL LEVEL MAKE (WATERBIDE)
WVIC 204+10 - 203+70, 400	EROSION	PLACE MUCK
WVIC 204+10 - 203+400	EROSION	FLAT CUT OFF WALL 50 FEET DIFF
WVIC 203+00 - 224+00	LANDSLIDE	RAISE CROWN 1.3 FEET (AVERAGE) BY FULL LEVEL MAKE (LANDSIDE)
WVIC 224+00 - 241+00	LANDSLIDE	
WVIC 241+00 - 247+00	LANDSLIDE	
WVIC 247+00 - 251+00	LANDSLIDE	
WVIC 251+00 - 258+00	LANDSLIDE	

Figure 1
Project and Plan View
Feather-Bear-WPIC Levee Project



Station	Elevation	Area	Volume
1+00	100.00	100.00	100.00
2+00	100.00	100.00	100.00
3+00	100.00	100.00	100.00
4+00	100.00	100.00	100.00
5+00	100.00	100.00	100.00
6+00	100.00	100.00	100.00
7+00	100.00	100.00	100.00
8+00	100.00	100.00	100.00
9+00	100.00	100.00	100.00
10+00	100.00	100.00	100.00
11+00	100.00	100.00	100.00
12+00	100.00	100.00	100.00
13+00	100.00	100.00	100.00
14+00	100.00	100.00	100.00
15+00	100.00	100.00	100.00
16+00	100.00	100.00	100.00
17+00	100.00	100.00	100.00
18+00	100.00	100.00	100.00
19+00	100.00	100.00	100.00
20+00	100.00	100.00	100.00
21+00	100.00	100.00	100.00
22+00	100.00	100.00	100.00
23+00	100.00	100.00	100.00
24+00	100.00	100.00	100.00
25+00	100.00	100.00	100.00
26+00	100.00	100.00	100.00
27+00	100.00	100.00	100.00
28+00	100.00	100.00	100.00
29+00	100.00	100.00	100.00
30+00	100.00	100.00	100.00
31+00	100.00	100.00	100.00
32+00	100.00	100.00	100.00
33+00	100.00	100.00	100.00
34+00	100.00	100.00	100.00
35+00	100.00	100.00	100.00
36+00	100.00	100.00	100.00
37+00	100.00	100.00	100.00
38+00	100.00	100.00	100.00
39+00	100.00	100.00	100.00
40+00	100.00	100.00	100.00
41+00	100.00	100.00	100.00
42+00	100.00	100.00	100.00
43+00	100.00	100.00	100.00
44+00	100.00	100.00	100.00
45+00	100.00	100.00	100.00
46+00	100.00	100.00	100.00
47+00	100.00	100.00	100.00
48+00	100.00	100.00	100.00
49+00	100.00	100.00	100.00
50+00	100.00	100.00	100.00

Figure 26
Seepage Barn Design

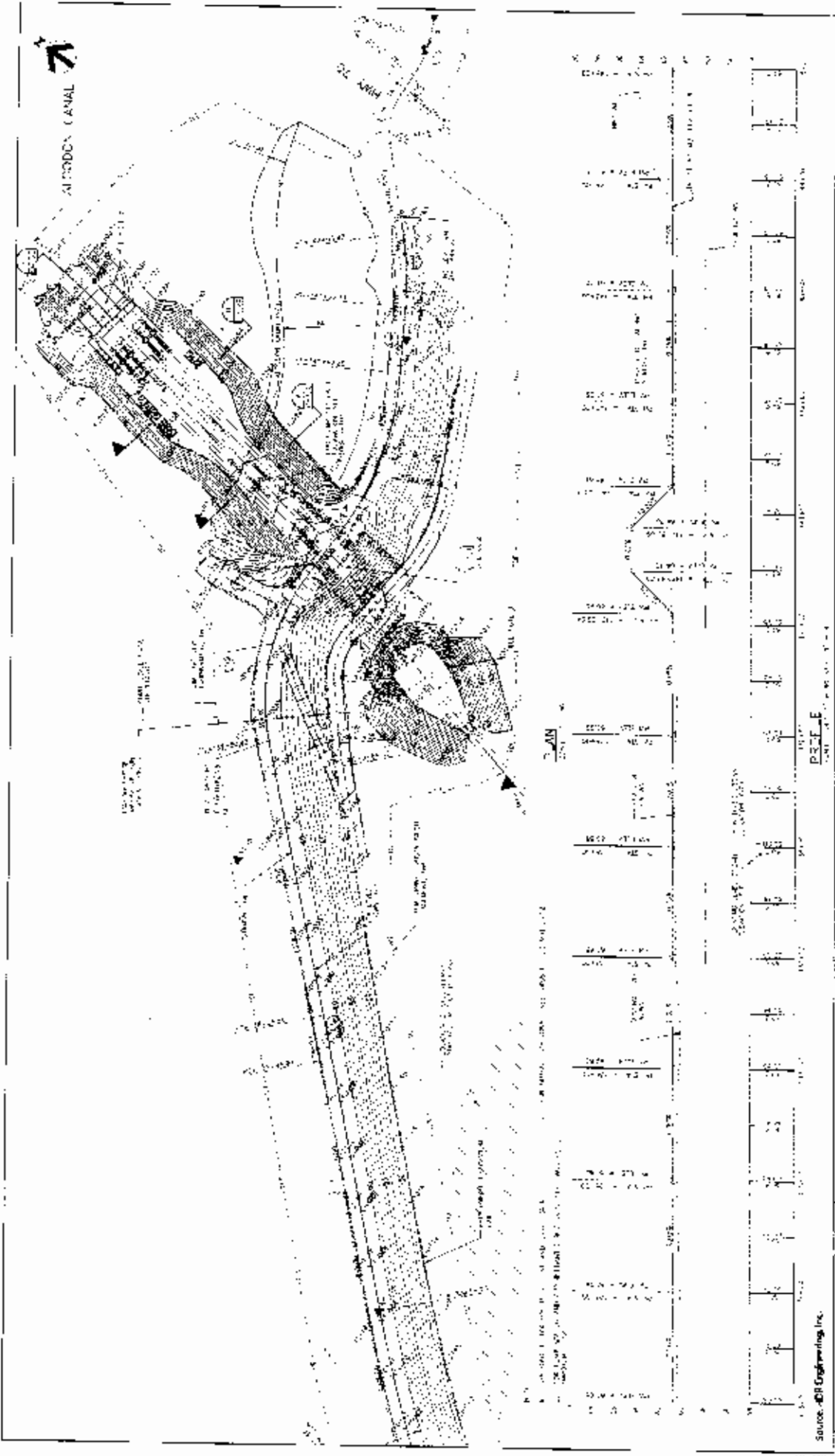


Figure 2b
Seepage Berm Design