



THREE RIVERS LEVEE IMPROVEMENT AUTHORITY

OCTOBER 12, 2004

**Yuba County Government Center
Board of Supervisors' Chambers
915 Eighth Street, Suite 109A
Marysville, California**

2:00 P.M.

I CALL TO ORDER

II ROLL CALL – Directors Rick Brown, Mary Jane Griego, Dan Logue, Richard Webb

III BOARD AND STAFF MEMBERS' REPORTS

III ACTION ITEMS

- A. Minutes: Approve minutes of the meetings of September 28, 2004.
- B. Ordinance: Hold public hearing, waive second reading, and adopt ordinance levying special taxes within Three Rivers Levee Improvement Authority Community Facilities District No. 2004-1 (South County Area). (Second Reading) (Continued from October 5, 2004)
- C. Request for Proposals: Approve solicitation for Request for Proposals for Levee Setback Engineering and Design Project.

IV PUBLIC COMMUNICATIONS: Any person may speak about any subject of concern provided it is within the jurisdiction of the Levee Improvement Authority and is not already on today's agenda. The total amount of time allotted for receiving such public communication shall be limited to a total of 15 minutes and each individual or group will be limited to no more than 5 minutes.

V ADJOURN

THREE RIVERS LEVEE IMPROVEMENT AUTHORITY

COUNTY OF YUBA

MINUTES – BOARD OF DIRECTORS

SEPTEMBER 28, 2004 – SPECIAL MEETING

A meeting of the Board of Directors of the Three Rivers Levee Improvement Authority was held on the above date, commencing at 1:09 p.m., within the Government Center, Marysville, California, with a quorum being present as follows: Directors Mary Jane Griego and Richard Webb. Also present were Executive Director Kent McClain, County Counsel Daniel Montgomery, and Clerk of the Board of Supervisors Donna Stottlemeyer. Chairman Webb presided.

ACTION ITEMS

Community Facilities District No. 2004-1/Formation and Special Election: Assistant County Administrator Randy Margo and Tax Consultant Tim Youmans recapped the formation of the community facilities district under the Mello Roos Act of 1982 and the rate and method of apportionment of special taxes to be levied. Mr. Margo and Youmans responded to Board inquiries.

Chairman Webb inquired if any property owners or registered voters in the District wished to file written protests. There being none, Chairman Webb opened the public hearing. No one came forward and the public hearing was closed.

Upon motion of Director Griego, seconded by Director Webb, and unanimously carried, the Authority adopted Resolution No. 04-06, which is entitled: “RESOLUTION OF FORMATION OF THREE RIVERS LEVEE IMPROVEMENT AUTHORITY COMMUNITY FACILITIES DISTRICT NO. 2004-1 (SOUTH COUNTY AREA), AUTHORIZING THE LEVY OF A SPECIAL TAX WITHIN THE DISTRICT, PRELIMINARILY ESTABLISHING AN APPROPRIATIONS LIMIT FOR THE DISTRICT, SUBMITTING LEVY OF THE SPECIAL TAX AND THE ESTABLISHMENT OF THE APPROPRIATIONS LIMIT TO THE QUALIFIED ELECTORS OF THE DISTRICT.”

ADOPT
RESOLUTION
NO. 04-06

Upon motion of Director Webb, seconded by Director Griego, and unanimously carried, the Authority adopted Resolution No. 04-07, which is entitled: “RESOLUTION DETERMINING THE NECESSITY TO INCUR BONDED INDEBTEDNESS WITHIN

ADOPT
RESOLUTION
NO. 04-07

THREE RIVERS LEVEE IMPROVEMENT AUTHORITY COMMUNITY FACILITIES DISTRICT NO. 2004-1 (SOUTH COUNTY AREA) AND SUBMITTING PROPOSITION TO THE QUALIFIED ELECTORS OF THE DISTRICT.”

Upon motion of Director Webb, seconded by Director Griego, and unanimously carried, the Authority adopted Resolution No. 04-08, which is entitled: “RESOLUTION CALLING SPECIAL ELECTION WITHIN THREE RIVERS LEVEE IMPROVEMENT AUTHORITY COMMUNITY FACILITIES DISTRICT NO. 2004-1 (SOUTH COUNTY AREA).”

ADOPT
RESOLUTION
NO. 04-08

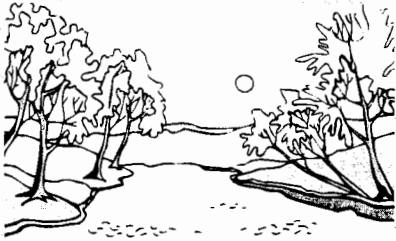
ADJOURNMENT

There being no further business to come before the Three Rivers Levee Improvement Authority the meeting was adjourned at 1:40 p.m. by Chairman Webb.


Chairman

ATTEST: DONNA STOTTLEMEYER
CLERK OF THE BOARD OF SUPERVISORS
AND EX-OFFICIO SECRETARY OF THE PUBLIC AUTHORITY

Approved: _____



THREE RIVERS LEVEE IMPROVEMENT AUTHORITY

TO: Board of Directors
FROM: 
Charles K. McClain, Executive Director
DATE: October 5, 2004
SUBJECT: Canvass of Election Regarding Establishment of Three Rivers Levee Improvement Authority Community Facilities District for No. 2004-1 (South County Area), and First Reading of Ordinance Levying Special Taxes in the District

COPIES OF THIS DOCUMENT ON FILE WITH
CLERK OF THE BOARD

RECOMMENDATION:

That the Board of Directors adopt the resolution entitled:

RESOLUTION NO.

RESOLUTION DECLARING RESULTS OF SPECIAL ELECTION AND DIRECTING RECORDING OF NOTICE OF SPECIAL TAX LIEN

And that the Board of Directors have the first reading of an ordinance entitled:

ORDINANCE NO.

AN ORDINANCE LEVYING SPECIAL TAXES WITHIN THREE RIVERS LEVEE IMPROVEMENT AUTHORITY COMMUNITY FACILITIES DISTRICT NO. 2004-1 (SOUTH COUNTY AREA)

BACKGROUND:

On September 28, 2004, the Board of Directors of the Three Rivers Levee Improvement Authority (the "Authority") held public hearings regarding the formation of the Three Rivers Levee Improvement Authority Community Facilities District No. 2004-1 (South County Area) (the "CFD") and the incurrence of bonded indebtedness of the CFD. Following the closing of the public hearings, the Board of Directors adopted a resolution of formation of the CFD of necessity to incur bonded indebtedness for the CFD, and a resolution calling a special election for the CFD to occur on October 5th. The owners of land in the CFD as of the close of the public hearings on September 28, 2004 are the only entities entitled to vote in the election, with each landowner having one vote for each acre or portion of an acre of land it owns in the CFD.

Each of the owners of property in the CFD has previously submitted to the Authority a Petition which waives the time to election and the need for ballot analysis and arguments. Ballots were sent to the property owners on September 29, 2004 with instructions that they be returned to the Secretary of the Authority by 3:30 p.m. on October 5th. Only ballots returned by such time and date are eligible to be counted in the election.

The Board of Directors is now being asked to adopt a resolution declaring the results of the election, as tabulated by the Secretary of the Authority and, assuming that two-thirds of the votes cast in the election are in favor of the ballot proposition, directing that a Notice of Special Tax Lien be recorded against the property in the CFD. The Notice, when recorded with the County Recorder, places a lien on property in the CFD to secure the payment of special taxes authorized to be levied by the Authority in the CFD. The Board of Directors is also being requested to have the first reading of the ordinance levying the special taxes in the CFD.

It is expected that the Board of Directors will have the second reading of and adopt the Ordinance at its next meeting, and will be requested to authorize the issuance of bonds for the CFD at a later meeting. The bonds, when issued, will be payable solely from special taxes levied on property in the CFD and from amounts in a reserve fund funded with bond proceeds, and the members of the Authority will have no responsibility whatsoever for the repayment of the bonds.

FISCAL IMPACT: Costs of issuance of the proposed bond issue will be paid from the proceeds of the bonds to be issued by the Authority for the CFD. All annual costs of administering the bonds and the CFD will be paid by special taxes levied on the properties in the CFD.

Any CFD bonds will not be general obligations of the Authority, but will be limited obligations of the Authority for the CFD, payable solely from special taxes levied on land in the CFD.

Attachments: Resolution
Notice of Special Tax Lien
Ordinance

BEFORE THE BOARD OF DIRECTORS
OF THE THREE RIVERS LEVEE IMPROVEMENT AUTHORITY

In Re:

AN ORDINANCE LEVYING SPECIAL TAXES)
WITHIN THREE RIVERS LEVEE IMPROVEMENT)
AUTHORITY COMMUNITY FACILITIES)
DISTRICT NO. 2004-1 (SOUTH COUNTY AREA)) **Ordinance No. _____**

WHEREAS, on August 24, 2004, this Board of Directors of the Three Rivers Levee Improvement Authority (the "Authority") adopted a resolution entitled "Resolution Declaring Intention to Establish a Community Facilities District and to Authorize the Levy of Special Taxes Therein – South County Area" (the "Resolution of Intention"), stating its intention to establish the Three Rivers Levee Improvement Authority Community Facilities District No. 2004-1 (South County Area) pursuant to the Mello-Roos Community Facilities Act of 1982, Section 53311 et seq. of the California Government Code (the "Law"), to finance the costs of certain flood control improvements (the "Facilities");

WHEREAS, notice was published as required by the Law of the public hearing called pursuant to the Resolution of Intention relative to the intention of this Board of Directors to form the District and to provide for the costs of the Facilities;

WHEREAS, the Resolution of Intention called for a public hearing on the District to be held on September 28, 2004 and on such date this Board of Directors held the public hearing relative to the determination to proceed with the formation of the District; and

WHEREAS, at the public hearing all persons desiring to be heard on all matters pertaining to the formation of the District and the levy of special taxes in the District were heard, substantial evidence was presented and considered by this Board of Directors and a full and fair hearing was held;

WHEREAS, subsequent to said hearing, this Board of Directors adopted resolutions entitled "Resolution of Formation of Three Rivers Levee Improvement Authority Community Facilities District No. 2004-1 (South County Area), Authorizing the Levy of a Special Tax Within the District, Preliminarily Establishing an Appropriations Limit for the District, Submitting Levy of the Special Tax and the Establishment of the Appropriations Limit to the Qualified Electors of the District" (the "Resolution of Formation"), "Resolution Determining the Necessity to Incur Bonded Indebtedness Within Three Rivers Levee Improvement Authority Community Facilities District No. 2004-1 (South County Area) and Submitting Proposition to the Qualified Electors of the District" (the "Resolution of Necessity") and "Resolution Calling Special Election Within Three Rivers Levee Improvement Authority Community Facilities District No. 2004-1 (South County Area)", which resolutions established the District, authorized the levy of a special tax with the District, and called an election within the District on the proposition of incurring indebtedness, levying a special tax and establishing an appropriations limit for the District, respectively; and

WHEREAS, on October 5, 2004 an election was held within the District in which the eligible landowner electors approved said propositions.

NOW, THEREFORE, the Board of Directors of the Three Rivers Levee Improvement Authority **DOES HEREBY ORDAIN** as follows:

Section 1. By the passage of this Ordinance this Board of Directors hereby authorizes and levies special taxes within the District, pursuant to the Law, at the rate and in accordance with the rate and method of apportionment of special taxes for the District approved by the Resolution of Formation (the "Rate and Method") which Resolution is by this reference incorporated herein. The special taxes are hereby levied commencing in fiscal year 2004-2005 and in each fiscal year thereafter until payment in full of any bonds issued by the Authority for the District (the "Bonds") as contemplated by the Resolution of Formation and the Resolution of Necessity and payment in full all costs of administering the District have been paid.

Section 2. The Treasurer of the Authority is hereby authorized and directed each fiscal year to determine the specific special tax rate and amount to be levied for each parcel of real property within the District, in the manner and as provided in the Resolution of Formation.

Section 3. Properties or entities of the State, federal or local governments shall be exempt from any levy of the special taxes, to the extent set forth in the Rate and Method. In no event shall the special taxes be levied on any parcel within the District in excess of the maximum tax specified in the Rate and Method.

Section 4. All of the collections of the special tax shall be used as provided for in the Law and in the Resolution of Formation including the payment of principal and interest on the Bonds, the replenishment of the reserves for the Bonds, the replenishment of a special tax stabilization fund, the payment of costs of flood control improvements, the provision of reimbursements of special taxes required to be made by the District, the provision of early retirement of indebtedness of the District, the payment of the costs of the Authority and the County of Yuba in administering the District and the costs of collecting and administering the special tax.

Section 5. The special taxes shall be collected from time to time as necessary to meet the financial obligations of the District (a) with respect to one-time taxes, of the times set forth in the Rate and Method; and (b) otherwise on the secured real property tax roll in the same manner as ordinary ad valorem taxes are collected. The special taxes shall have the same lien priority, and be subject to the same penalties and the same procedure and sale in cases of delinquency as provided for ad valorem taxes. In addition, the provisions of Section 53356.1 of the California Government Code shall apply to delinquent special tax payments. The Treasurer of the Authority is hereby authorized and directed to take all actions necessary in order to effect proper billing and collection of the special tax, so that the special tax shall be levied and collected in sufficient amounts and at the times necessary to satisfy the financial obligations of the District in each fiscal year until the Bonds are paid in full and provision has been made for payment of all of the administrative costs of the District.

Notwithstanding the foregoing, the Treasurer of the Authority may collect any one-time special tax or one or more installments of the backup special taxes on any one or more parcels in the District by means of direct billing by the Authority of the property owners within the District, if, in the judgment of the Treasurer, such means of collection will reduce the administrative burden on the Authority in administering the District or is otherwise appropriate in the circumstances. In such event, the special

taxes shall become delinquent if not paid when due as set forth in any such respective billing to the applicable property owners.

Section 6. If for any reason any portion of this Ordinance is found to be invalid, or if the special tax is found inapplicable to any particular parcel within the District, by a Court of competent jurisdiction, the balance of this Ordinance, and the application of the special tax to the remaining parcels within the District shall not be affected.

* * * * *

INTRODUCED and first read on October 5, 2004, and **PASSED AND ADOPTED** this ____ day of _____, 2004, by the Board of Directors of the Three Rivers Levee Improvement Authority, by the following vote:

AYES:

NOES:

ABSENT:

ABSTAIN:

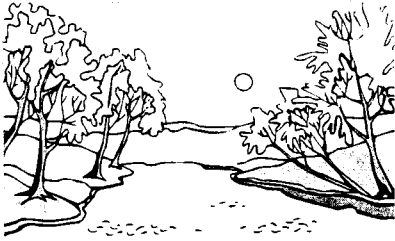
Chairperson

ATTEST: DONNA STOTTLEMEYER,
SECRETARY

APPROVED AS TO FORM: COUNSEL TO
THE AUTHORITY,
DANIEL MONTGOMERY




20019.01:J7781
9/29/04



THREE RIVERS LEVEE IMPROVEMENT AUTHORITY

October 12, 2004

TO: Three Rivers Levee Improvement Authority
FROM: Randy Margo, Assistant County Administrator 
SUBJECT: Consider Solicitation of Request for Proposals for Bear River Setback
Levee

Recommended Action

Approve the attached solicitation of Request for Proposals for the Bear River Setback Levee.

Purpose of Recommendation

The proposed recommendation will provide a competitive process for engineering, design and related services necessary to complete the Bear River Setback Levee. Importantly, the firm selected will be required to certify the levees as meeting FEMA criteria if the U.S. Army Corps of Engineers chooses not to provide this certification.

Discussion

Back in May 2003, the U.S. Army Corps of Engineers informed local officials that a study was being undertaken on the levee system in Southwest Yuba County. As a result, Yuba County along with Reclamation District 784 and the Yuba County Water Agency hired its own engineering consultants to evaluate the protection provided by these levees. Levee deficiencies were identified as a result of that evaluation along with proposed remedies, including a setback levee to be constructed north of the Bear River from 1,400 feet below State Route 70 crossing to the confluence of the Feather River.

The attached solicitation for engineering, design and related services provides a scope of services along with the tasks, schedule, selection criteria, and evaluation process. The schedule calls for selection of the consultant by November 16, 2004 with the notice to proceed provided by December 15, 2004. The successful firm will need to ensure completion of construction by October 31, 2006.

Fiscal Impact

Funding will be provided by a combination of federal, state and local developer funds. Notice to proceed will be dependent upon obtaining the required permits from the State Board of Reclamation.

**THREE RIVERS LEVEE IMPROVEMENT AUTHORITY
REQUEST FOR PROPOSALS**

Reclamation District No. 784, Bear River Setback Levee

You are invited to submit a Proposal and other material in accordance with the Scope of Services and Tasks to be considered for selection to design a setback levee on the Bear River.

A. Scope of Services

The Three Rivers Levee Improvement Authority (TRLIA) is seeking a consultant to provide engineering services to design a setback levee project for the Lower Bear River in Reclamation District No. 784 (RD 784). The setback levee will be constructed in phases. The first phase will be to build the setback levee. The second phase will be to degrade portions of the existing levee. The new detention basin for RD 784's pump station No. 2 and land between the existing levee and the setback levees will be used for borrow. The TRLIA is working with the Resource Agencies on the ecosystem enhancement portions of the project. The restoration design may be conducted outside the scope of this contract. However, at a minimum, coordination on grading of borrow areas to avoid fish stranding and defining segments of existing levee that will remain in place will be conducted under this contract. This is a flood control element of the Yuba-Feather Supplemental Flood Control Project. Services required are as follows:

1. Review available geotechnical field investigations, laboratory tests, and analyses; and perform any additional investigations and analyses as needed to complete the design. The results of the analyses and design considerations are to be documented in a Basis of Design Report.
2. Evaluate existing topographic information and determine the need and extent of additional surveys necessary for final design.
3. The consultant will develop a 2-dimensional (2-D) hydraulic model.
4. Prepare all environmental documents for full compliance with the California Environmental Quality Act (CEQA) that may be needed to supplement the EIR that TRLIA is in the process of completing. TRLIA will be the lead agency for CEQA purposes.
5. Assist TRLIA in conducting a public outreach program including preparation of newsletters and hosting public workshops.
6. Prepare 35%, 90%, and final design plans, specs and cost estimates (PS&E).
7. Prepare permit applications and required supporting documents to secure all necessary permits from regulatory agencies and utilities, with the exception of the 404 permit.
8. Construction services including pre-bid assistance, field reviews, response to contractor's request(s) for information, and review of shop drawings. Construction

- management and inspection is expected to be provided by others but may be negotiated with the consultant if subsequently needed.
9. Coordination with the US Army Corps of Engineers (Corps) by the consultant during the design and construction of the project is required. It is the intent that the Corps will be able to certify these levees as meeting FEMA "Base Flood" criteria at the conclusion of the project. However, the consultant will be required to certify the levees as meeting FEMA criteria if the Corps chooses not to do this certification.
 10. The Basis of Design Report, 35%, 90%, and final PS&E are to be reviewed by TRLIA, Corps, the Department of Water Resources, The Reclamation Board and others. Engineering consultant will be responsible for integrating review comments and providing record of responses.
 11. Real Estate and right of way will be addressed under separate contract. However, the selected consultant will need to provide technical support for this effort.

B. Background

Local representatives have been informed that the Corps has investigated the RD 784 Bear, Yuba, Feather Rivers and the Western Pacific Interceptor Canal (WPIC) levees as part of the Lower Feather River Floodplain Mapping Study, conducted under contract with DWR. The draft report concluded that portions of these levees lack up to one foot of freeboard on the FEMA "Base Flood" (1/100 year Annual Exceedence Probability flood event).

Southwest Yuba County is protected by these levees, which includes the Plumas Lake Specific Plan Area. These areas could potentially be mapped into a Federal Emergency Management Agency (FEMA) special flood hazard area. The affected lands are not presently identified as being in a special flood hazard area as shown on the current FEMA maps. If FEMA releases a new map with this designation, it will have significant implications for local landowners. Development on land within a special flood hazard area would be subject to floodplain regulations and limitations, including the Yuba County Flood Plain Management Ordinance. Houses and structures located in this special hazard area may require flood insurance and flood insurance rates will increase. In some situations, it is not feasible to construct buildings within a special flood hazard area. The affected lands will include large portions of the Plumas Lake Specific Plan Area.

Local agencies have worked to acquire and verify the information relied upon by, and underlying, the Corps' conclusions. The TRLIA has evaluated the scope of the problem and potential remedies.

TRLIA has issued a separate contract for design of the WPIC, Yuba River, and the Bear River upstream of the levee setback. The remaining portion that involves the setback levee in the lower Bear River area is the subject of this RFP.

C. Available Data

Report on Feasibility of RD 784 Supplemental Flood Control Improvements of the Yuba-Feather Flood Control Project – This report, dated October 2004, is available for review at TRLIA during normal office hours. The report is also available for reproduction at the consultant's expense at:

Brownie's
1322 V Street
Sacramento, CA
(916) 443-1322

Topographic surveys from earlier studies – This material will be provided to the selected applicant.

Geotechnical explorations from earlier studies – This material will be provided to the selected applicant.

Hydraulic and hydrologic models – The HEC-RAS model developed by the Corps will be provided to the selected applicant.

D. Advisory Committee

TRLIA will establish an Advisory Committee that will participate in the selection of the consultant and provide assistance to the design team.

E. Tasks

The consultant will be required to:

1. Conduct site visits to the setback levee area to obtain information, assess existing site conditions, and reconcile design details to actual field conditions. A kickoff meeting will be held between design team members and TRLIA personnel to discuss design and operation criteria. Available information pertaining to levee design, construction and operation will be collected, reviewed for relevance, and incorporated into the levee setback design as appropriate. Information collected and reviewed will include details from previous levee designs, levee repair and maintenance information, previous studies, and construction records.
2. Prepare a Quality Control Plan.
3. Prepare a Basis of Design Report. The Basis of Design Report will establish the design basis and will present the criteria, methods of analysis, and standards to be used in the design of the setback levee.
4. Attend and document project meetings and monthly design coordination meetings.
5. Conduct hydraulic modeling for the Project reach. The Corps has constructed a HEC-RAS model that is available for use. A 2-D hydraulic model will need to be developed to address changes in velocity and design of erosion control measures on

the entire RD 784 Western Pacific Interceptor Canal and Bear River levees. Portions of the existing levee will be left in place and the 2-D analysis will need to provide input into the design process to minimize hydraulic impacts of these remnant levees. Evaluation of the RD 784 Feather River levee may also need to be conducted to evaluate erosion potential as part of the FEMA certification effort. Once a final design is developed, the consultant will update the HEC-RAS model to reflect the design conditions.

6. The setback levee will impact the interior drainage floodplain. As a result, RD 784's pump station No. 2 will need to be either expanded, a new detention basin constructed, or some combination of these two alternatives developed as part of the project. The consultant will be responsible for the design and all associated permits for this task.
7. Field explorations in support of the setback levee design will be needed. Detailed geologic reconnaissance and mapping of the levee alignment to augment the existing information will be required. This will likely include:
 - a. Topographic mapping of the setback levee and borrow area site. Additional surveys will be performed in areas where greater detail is needed, as appropriate.
 - b. Drilling of geotechnical test borings in the foundation of the setback levee. These explorations will provide needed data on the setback levee foundation conditions, including the presence of permeable layers in the foundation that would require underseepage mitigation.
 - c. Seismic refraction survey or cone penetration testing to provide supplemental foundation information along the setback levee alignment.
 - d. Excavation of test pits and drilling of test borings in potential borrow areas to define the limits of potential borrow, determine quantity of material available, and to obtain soil samples for material property testing.
 - e. Other activities within this task will include preparation of subcontracts, obtaining site access, permit acquisition, utility clearance, supervision of subcontractors, documenting and logging field exploration activities, and preparing logs and data summaries.
8. Provide the plans, specifications and cost estimates at the 35%, 90%, and final milestones.
9. TRLIA will be responsible for obtaining the 404 permit. The consultant will be required to provide any other permits and provide technical input for this process, including coordination with the permitting agencies on technical issues.
10. May be asked to develop restoration strategies for the setback area.
11. May be required to certify the levees as meeting FEMA's minimum standard for protection against the "Base Flood".
12. The consultant will be required to develop a schedule that will ensure that construction of the setback levee can be completed no later than October 31, 2006.

F. Schedule

- | | |
|-----------------------------------|-------------------|
| 1. Issue Request for Proposals | October 13, 2004 |
| 2. Proposal submittal deadline | November 8, 2004 |
| 3. Notification of interview time | November 9, 2004 |
| 4. Interview | November 10, 2004 |
| 5. Select consultant | November 16, 2004 |
| 6. Finalize contract negotiations | December 9, 2004 |
| 7. NTP | December 15, 2004 |

G. Proposals

Applicants who are interested in providing professional services for the tasks described above are to submit a Proposal that includes the following:

1. Identification of principal(s) and subconsultants, including key personnel and lead persons to be assigned to the project. Please be very specific about education and background of all principals and subconsultants, as well as current or past recent participation directly with the primary applicant. Resumes of primary participants must be included.
2. A written statement of the nature of similar projects recently completed. Be specific regarding projects that are the same or similar in nature to what is described in this RFP.
3. Demonstration of knowledge of Federal, State, and local laws, rules, regulations, ordinances, etc., specific to related projects.
4. Scope of work defining the activities that will need to be completed for design of the setback levee.
5. Schedule for design, permitting, bid, and construction of the project that will ensure completion of construction by October 31, 2006.
6. Evidence of possession of valid California State registrations in the appropriate design disciplines.
7. Estimated effort and cost associated with each task will be submitted in a separate sealed envelop.

TRLIA staff will not respond to any question or concerns of a technical nature with any RFP respondents. Administrative questions may be directed to Randy Margo, TRLIA, at (530) 749-7575.

H. Selection Criteria

Applicants shall submit six (6) copies of the Proposal and one (1) sealed envelope containing six (6) copies of the estimated effort by task and cost. An advisory board appointed by TRLIA will evaluate all submitted Proposals in accordance with the criteria stated below. All applicants will be invited to an interview to be held at TRLIA's offices. After the interviews have been completed, the envelopes containing estimated effort and

cost will be opened and the respondents will be ranked. Evaluation and selection criteria include the following:

1. Professional excellence.
2. Demonstrated competence and specialized experience in the following:
 - a. Levee improvement projects.
 - b. Hydraulic and hydrologic studies, investigations, and designs.
 - c. Environmental considerations similar to this project.
 - d. Capacity to accomplish the assigned tasks within the proposed project schedule.
3. Qualification and experience of key personnel.
4. Approach and understanding of design issues presented in the applicant's proposed Scope of Work.
5. Estimated design services costs.

I. Submittal Documents

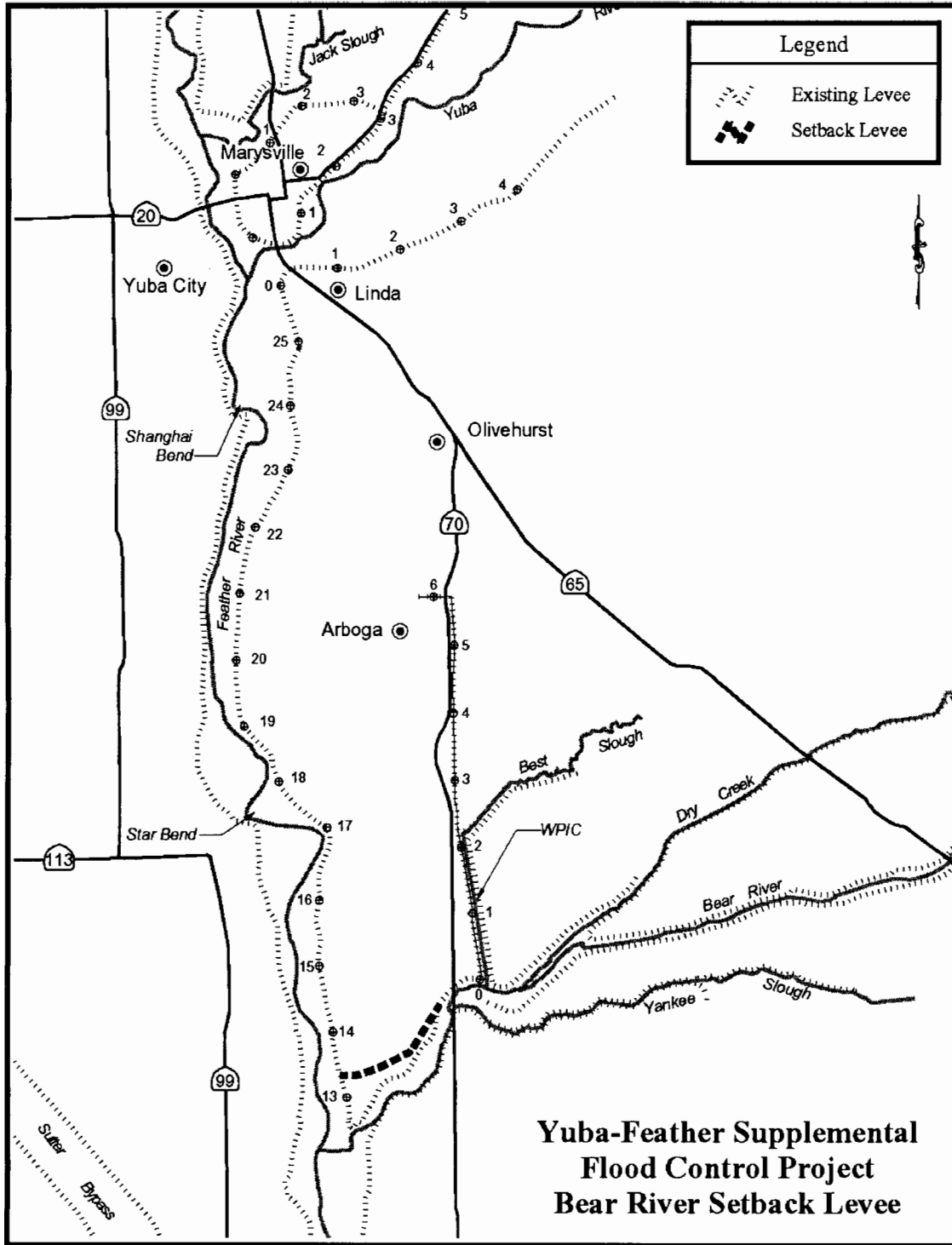
Applicants who are interested in providing professional service for this project are required to submit a Proposal and cost estimate no later than 4:00 pm on November 8, 2004. All Proposals and materials submitted in response to this RFP become property of TRLIA and will not be returned. Please submit six (6) copies of all material to:

Three Rivers Levee Improvement Authority
Attn: Charles K. McClain
915 Eighth Street, Suit 115
Marysville, CA 95901-5273

Receipt in the above office must be by the deadline stated, regardless of postmark.

J. Evaluation Process and Contract Award

Each submittal will be reviewed for completeness of documentation. These submittals will be evaluated and scored by a panel based on the scope of services and selection criteria. Those applicants selected for an interview will be asked to make a brief presentation on their qualifications, experience and proposal for design. This interview is tentatively scheduled as shown above. A contract will be proposed with the selected firm. This firm will be asked to submit a detailed fee proposal, including hourly rates and cost. TRLIA will then attempt to negotiate a fee for services that is fair and reasonable. A contract award shall be made to the responsible applicant whose Proposal is most advantageous to TRLIA. TRLIA's objective is to obtain the highest qualified applicant to achieve the objectives within a realistic time frame and reasonable cost. Qualifications, experience and proposed scope of work as a whole are more important than cost. After successful negotiation, a contract will be executed for the services. One contract will be awarded.



Consultant List	City, State Zip	Contact Name	Contact Email	Phone	Fax
Firm Name	Address				
Anderson and Associates	22 N. Houston Lane				
Andregg Inc.	299 Nevada Street	Denis Meyer	www.andregg.com	530 885-7072	530 885-5798
Argonaut Consulting LLC	7144 Fair Oaks Boulevard, Suite 2	Kathy Kinsland		916 488-8140	916 488-8199
Ayres Associates	2151 River Plaza Drive, Suite 170	Tom Smith		916 563-7700	916 563-6972
Bookman-Edmonston Engineering	3100 Zinfandel Drive, Suite 500	Naser Bateni	nbateni@navigantconsulting.com	916 852-1300	916 852-6385
Black & Veatch	8950 Cal Center Drive, Suite 238	Keanne Sommers	SommersKS@bv.com	916 364-2923	916 361-2495
Blackburn Consulting	2437 Front			916 375-8706	916 375-8709
Brown & Caldwell	2701 Prospect Park Drive		www.browmandcaldwell.com	916 444-0123	
Brown Buntin Associates	7996 California Avenue			916 961-5822	
Callander Associates	11180 Sun Center Drive			916 631-1312	916 635-9153
Carollo Engineers	2700 Ygnacio Valley Road, Suite 300	Sarwan Wason		925 932-1710	925 930-0208
CDM	2151 River Plaza Drive, Suite 200			916 567-9900	916 567-9905
CH2M HILL	2485 Natomas Park Drive, Suite 600			916 920-0300	916 920-8463
Colton-Bridges-Associates	3840 Rosin Court, Suite 130			916 649-0196	916 649-0197
CSW	1310 Redwood Way, Suite 200	Georgia McDaniel	office@csws2.com	707 795-4764	707 795-0516
David Ford Consulting Engineers	2015 J Street	David Ford	ford@ford-consulting.com	916 447-8779	916 447-8780
Dokken Engineering	11171 Sun Center Drive			916 858-0642	
Domenichelli & Associates	1107 Investment Boulevard, Suite 145	Joe Domenichelli	jdomenichelli@sbcglobal.net	916 933-1997	916 933-4778
EDAW	2022 J Street	Debra Bishop	dbishop@edaw.com	916 414-5800	916 414-5850
EIP Associates	1200 Second Street, Suite 200		sac@eipassociates.com	916 325-4800	916 325-4810
ENGEQ Inc.	631 Commerce Drive, Suite 100			916 786-8883	916 786-7891
ENTRIX	7919 Folsom Boulevard, Suite 100	Tom Taylor		916 923-1097	916 923-6251
Environmental Sciences Associates	8950 Cal Center Drive, Building 3, Suite 300		www.esassoc.com	916 564-4500	916 564-4501
Espana Geotechnical Consulting	502 Guiseppe Court, Suit 11	Carlos Espana	cespana@respanageotechnical.com	916 773-2600	916 782-4846
Foothill Associates	655 Menlo Drive, Suite 65	Kate Kirsh		916 435-1202	916 435-1205
Fugro West, Inc.	100 Broadway, Suite 200				
GEI Consultants, Inc	2201 Broadway, Ste.321	Bill Rettberg		510 835-9838	510 835-9842
H.T. Harvey & Associates	1550 Harbor Boulevard, Suite 200	Becky (ext 520)	bteer@harvevecology.com	916 371-3733	916 371-1220
HDR Engineering, Inc.	2365 Iron Point Road, Suite 300	Ken Myers	ken.myers@hdrinc.com	916 817-4700	916 817-4747
Holt Co.	660 J Street, Suite 444			916 448-2440	916 448-5305
Hullgren Tillis Engineers	2056 Commerce Avenue				
Jones & Stokes	2600 V Street	Chris Elliott	celliott@isanet.com	916 737-3000	916 737-3030
Kennedy-Jenks Consultants	3336 Bradshaw Road			916 362-3251	
Kjeldsen, Sinnock & Neudeck, Inc.	P.O. Box 844	Ronnie Turman	rturman@ksninc.com	209 946-0268	209 946-0296
Kleinfelder	3077 Fite Circle	Ray Costa	rcosta@kleinfelder.com	916 366-1701	916 366-7013
Lowrey Associates	P.O. Box 1388				
Mackay & Sumps	1771 Tribute Road, Suite E			916 929-6092	916 923-5625
Mactec Engineering & Consulting, Inc.	10265 Rockingham Drive, Suite 150		www.mactec.com	916 364-0793	916 364-5633
Mark Thomas & Company, Inc.	7300 Folsom Boulevard, Suite 230	Mike Stanley	mstanley@mtcosac.com	916 381-9100	916 381-9180
MBK Engineers	2450 Alhambra Boulevard, 2nd Floor	Ric Reinhardt	reinhardt@mbkengineers.com	916 456-4400	916 456-0253
Mead & Hunt	3327 Longview Drive	Steve Sullivan	stephen.sullivan@meadhunt.com	916 971-3961	916 971-0578
MHM	P.O. Box B	Sean Minard	sminard@mhm-inc.com	530 742-6485	530 742-5639
Montgomery Watson - Harza	777 Campus Commons Road, Suite 250			916 924-8844	916 924-9102

Morton & Pitalo, Inc.	1788 Tribute Road, Suite 200	Sacramento, CA 95815			916 927-2400	916 567-0120
Navigant Consulting	P.O. Box 15516	Sacramento, CA 95855-1516			916 852-1300	916 852-1073
NEXRAIN Corporation	9267 Greenback Lane, Suite C4	Orangevale, CA 95662		info@nexrain.com	916 988-2771	916 988-2769
Ninyo & Moore	1956 Webster Street, Suite 400	Oakland, CA 94612	Megan Krause	mkrause@ninyoandmoore	510 633-5640	510 633-5646
Nolte & Associates	1750 Creekside Oaks Drive, Suite 200	Sacramento, CA 95833			916 641-1500	916 641-9222
North State Resources, Inc.	2150 River Plaza Drive, Suite 290	Sacramento, CA 95833	Bruce Wilcox	www.nsrmet.com	916 564-8541	916 564-8544
Northwest Hydraulic Consultants, Inc.	3950 Industrial Boulevard, Suite 100C	West Sacramento, CA 95691	Ed Wallace	ewallace@nhc-sac.com	916 371-7400	916 371-7475
Parsons Brinckerhoff	3840 Rosin Court, Suite 200	Sacramento, CA 95834	Bob Cermak	cermak@pbworld.com	916 567-2500	916 925-3517
Phillip Williams & Associates	928 Second Street, Suite 300	Sacramento, CA 95814	Cris Bowles	c.bowles@pwa-llc.com	916 444-9407	916 444-9417
Psomas	2295 Gateway Oaks Drive, Suite 250	Sacramento, CA 95833	Brian Bullock	bbullock@psomas.com	916 929-7100	916 929-6830
Raines, Melton & Carella, Inc.	3320 Data Drive, Suite 350	Rancho Cordova, CA 95670	Randy Raines	raines@rmtcengr.com	916 851-0292	916 851-0293
RBF Consulting	2101 Arena Boulevard, Suite 250	Sacramento, CA 95834-2303	Pal Hegedus	phgedus@rbf.com	916 928-5177	916 928-1117
Reliance Environmental Services	P.O. Box 321	Fair Oaks, CA 95628	Glen Fulbright	glennf@relianceenvironmental.com	916 966-1191	916 966-1181
Sanders & Assoc Geostructural Engrs	4180 Douglas Boulevard, Suite 100	Ganite Bay, CA 95746	Drew Kennedy	dkennedy@sandersgeo.com	916 729-8050	916 729-7706
Schaff & Wheeler	100 N. Winchester Boulevard, Suite 200	San Jose, CA 95050-6566	Jim Schaff		408 246-4848	408 246-5624
Stantec Consulting	2590 Venture Oaks Way	Sacramento, CA 95833	Pal Hegedus		916 925-5550	
Stillwater Sciences	279 Cousteau Place, Suite 400	Davis, CA 95616	Scott D. Wilcox	scott@stillwatersci.com	530 756-7550	530 756-7586
Swanson Hydrology & Geomorphology	115 Limekin Street	Santa Cruz, CA 95060	Mitch Swanson	www.swansonh2o.com	831 427-0288	831 427-0472
Taber Consultants	3911 W. Capital Avenue	West Sacramento, CA 95691		tskaug@taberconsultants.com	916 371-1690	916 371-7265
Tetra Tech	6929 Sunrise Boulevard, Suite 210	Citrus Heights, CA 95610	Mike Burnham	mike.burnham@ttisg.com	916 726-8114	916 726-8153
URS	1333 Broadway, Suite 800	Oakland, CA 94612		said_sah_mats@urscorp.com	510 893-3600	510 874-3268
Wood Rogers, Inc.	3301 C Street, Bldg 100B	Sacramento, CA 95816	Fran Borcalli	fborcalli@woodrogers.com	916 341-7760	916 341-7767
Youngdahl Consulting	1234 Glenhaven Court	El Dorado Hills, CA 95762			916 933-0633	916 933-6482